

FACTORY PREPARED TECHNICAL SERVICE DATA

Index on Page 22.

SERVICE PUBLICATIONS DEPARTMENT
Entertainment Products Group

700 Ellicott Street - Batavia, N.Y.

This supplement introduces the R74-4 chassis, and Model RQ4747.

The R74-4 chassis is similar to the R74-3 chassis, with the addition of a new muting panel and CD4 demodulator circuits.

Complete schematics and parts lists for the R74-4 chassis are given in this supplement.

END CAP - LEFT HAND
74-36448-2

VENT - CABINET TOP
74-34773-1

TUNER BEZEL
74-34763-5

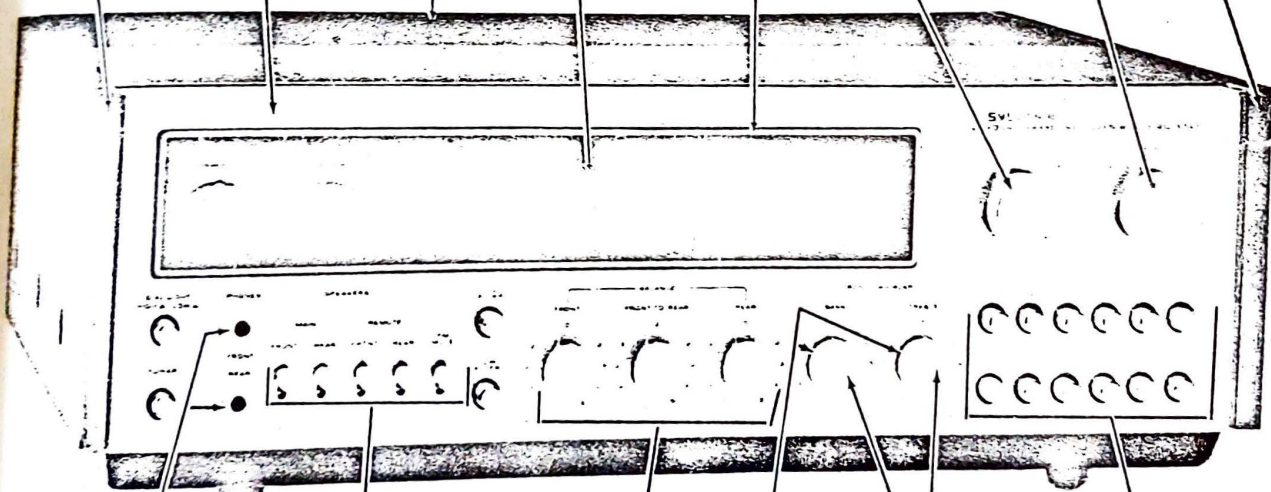
KNOB - VOLUME
74-34861-1

DIAL BEZEL
74-34928-1

COVER GLASS
74-34762-1

KNOB - TUNING
74-34861-2

END CAP -
RIGHT HAND
74-36448-1



NUT - HEADPHONE
JACK MOUNTING
70-32649-1

KNOB -
TOGGLE SWITCH
74-34797-1

KNOB -
BALANCE
CONTROL
74-34859-1

KNOB - BASS,
TREBLE
(INNER SHAFT)
74-34862-1

PUSHBUTTON
74-34913-1

NON-SKID PAD (4)
86-28719-5

KNOB - BASS,
TREBLE
(OUTER SHAFT)
74-34863-1

MODEL: RQ4747
CHASSIS: R74-4

IMPORTANT: Always use genuine Sylvania replacement parts and tubes.

REPLACEMENT PARTS LIST

SCHEMATIC CODING	SERVICE PART NO.	DESCRIPTION
CAPACITORS (All values in MFD, unless otherwise specified)		
C2	42-34768-1	Main Tuning Gang
C3		330PF, Z5P
C4		330PF, Z5P
C6		330PF, Z5P
C8		330PF, Z5P
C10		10PF, NPO
C14		18PF, NPO
C16		.01, 100V
C18		3.3PF, NPO
C20		330PF, Z5P
C22		3.3PF, NPO
C24		.01, 100V
C26		.01, 100V
C28	42-34941-1	Trimmer
C30		.01, 100V
C32		.01, 100V
C34		.01, 100V
C36		33PF, N150
C38		.02, 100V
C40		.02, 100V
C42		.01, 100V
C44		.01, 100V
C46		.02, 100V
C48		33PF
C50		.01, 100V
C52		330PF, Z5P
C58		820PF, Z5P
C63		.01, 100V
C76	42-18146-1	Ceramic Trimmer
C78		.01, 100V
C80		.01, 100V
C82		10PF, NPO
C84		.01, 100V
C86		100PF, Z5P
C88		.05, 50V
C94		.05, 50V
C96		.01, 100V
C98		.01, 100V
C100		100PF, Z5P
C102		.05, 50V
C104		330PF, Z5P
C106		.01, 100V
C112		4.7PF, N150
C114		4700PF, Z5U
C116		.05, 50V
C118		.02, 100V
C120		.01, 100V
C122		15PF
C124		.01, 100V
C128		2.2PF, NPO
C134		.05, 50V
C136		33PF, N150
C138		.05, 50V
C142		180PF, Z5P
C144		560PF, Z5P
C146		270PF, Z5P
C148		.047, 150V
C302		100PF, Z5P
C306		.0082
C308		.022, 250V
C314		.047, 150V
C316A		.039
C316C		.0068
C318A		.22, 150V
C318C		.039
C320A		.0068
C320C		.039
C322A		.039
C322C		.22, 150V
C324		.01, 100V
C326		.01, 100V
C344		.01, 100V
C346		220PF, Z5P
C402		.1, 150V

SCHEMATIC CODING	SERVICE PART NO.	DESCRIPTION
CAPACITORS (CONTINUED)		
C502	43-33245-6	.005, 150V
C508	43-98665-6	.005, 150VAC
C508		.1, 150V
C510		.1, 150V
C512		.1, 150V
C534		.1, 150V
C540		.01, 100V
C603		.01, 100V
C606		.047, 150V
C608		.047, 150V
C610		820PF, Z5P
C614		33PF, N150
C618		.1, 150V
C620		.1, 150V
C622		1200PF, Z5P
C624		560PF, Z5P
C625		.01, 100V
C627		.01, 100V
C629		5.6PF
C632		10PF, NPO
C634		.01, 100V
C636		.01, 100V
C638		330PF, Z5P
C640		330PF, Z5P
C642		.01, 150V
C644		.01, 100V

ELECTROLYTIC CAPACITORS
(Values are shown as: MFD/Working Voltage)

C54	41-32477-46	5/25V
C60	41-32477-46	5/25V
C72	41-32477-85	1/50V
C74	41-32477-85	1/50V
C90	41-32477-46	5/25V
C92	41-32477-85	1/50V
C108	41-32477-3	10/15V
C132	41-32477-47	10/25V
C140	41-32477-86	2/50V
C150	41-32477-9	100/6V
C151	41-32477-33	10/15V
C301	41-23765-16	1/50V
C310	41-32477-9	100/6V
C312	41-32477-86	2/50V
C342	41-32477-85	1/50V
C514	41-36386-1	5000/40V
C516	41-36386-1	5000/40V
C518	41-36386-1	5000/40V
C520	41-36386-1	5000/40V
C522	41-32477-67	500/35V
C524	41-32477-67	500/35V
C528	41-32477-95	500/50V
C530	41-32477-67	500/35V
C532	41-32477-95	500/50V
C536	41-32477-67	500/35V
C538	41-32477-67	500/35V
C544	41-23765-5	5/25V
C560	41-23762-54	100/15V
C562	41-23762-54	100/15V
C602	41-32477-34	25/15V
C604	41-23765-17	2/50V
C612	41-32477-86	2/50V
C616	41-32477-86	2/50V
C626	41-23765-17	2/50V
C628	41-32477-50	50/25V
C630	41-32477-51	100/25V

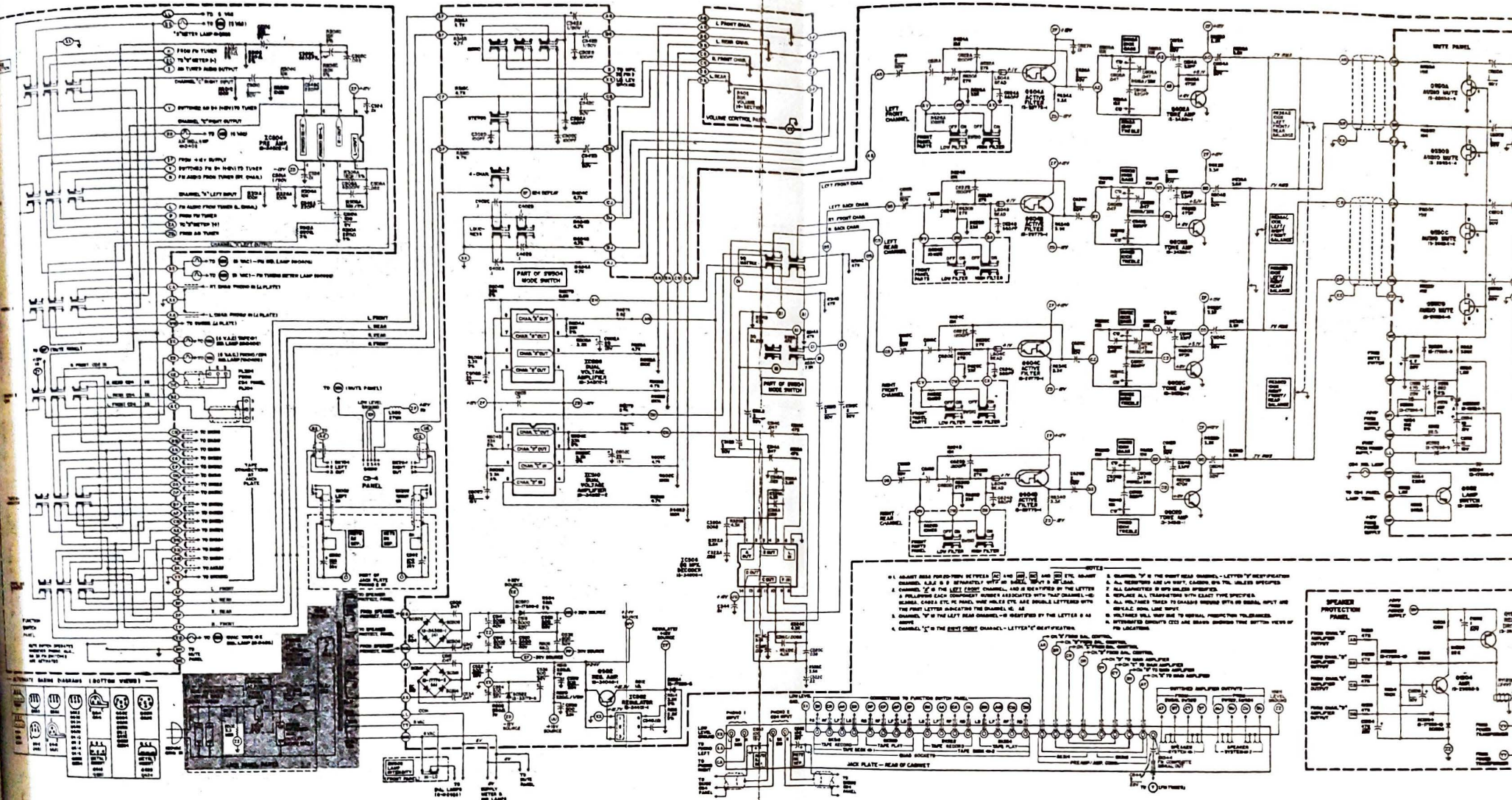
POLYSTYRENE CAPACITORS		
C56	40-28121-1	10,000PF - 50V
C64	40-28121-4	2500PF - 50V
C68	40-10285-13	330PF - 125V
C70	40-10285-13	330PF - 125V
C126	40-10285-50	390PF - 125V

REPLACEMENT PARTS LIST (CONTINUED)

SCHEMATIC CODING	SERVICE PART NO.	DESCRIPTION
RESISTORS (All 1/4W, Carbon, 5%, unless otherwise specified)		
R2		660 ohm
R4		10K
R6		3.3K
R8		1K
R10		4.7K
R12		270 ohm
R14		22K
R16		10K
R18		10K
R20		22K
R22		330 ohm
R24		1K
R26		100 ohm
R28		5.6K
R30		270 ohm
R32		180 ohm
R34		820 ohm
R36		15K
R38		330 ohm
R40		390 ohm
R42		15K
R44		1K
R46	37-14576-5	1K Variable - FM Meter Zero
R48		1.5K
R50		150 ohm
R52		4.7K
R54	37-14576-15	330 ohm Variable - Separation
R56		220 ohm
R58		3.9K
R60		3.9K
R62		470 ohm
R63		100K
R64		470 ohm
R65		100K
R66		33K
R68		33K
R70		22K
R72		10K
R74		2.2K
R76		100 ohm
R78		56K
R80		100K
R82		330K
R84		10K
R86		120K
R88		100K
R90		120K
R92		100K
R94		56K
R96		33K
R98		1K
R100		10K
R102		22K
R104		1K
R106		150 ohm, 1/2W, 10%
R112		1K
R114		22K
R116		82K
R118		1.8K
R120		560 ohm
R122		10K
R124		22K
R126		120K
R128		4.7K
R130		33 ohm
R132		150K
R134		33K
R136		470 ohm
R138		3.3K
R140		10K
R142		10K
R144		150K
R146		100K
R148		100K

SCHEMATIC CODING	SERVICE PART NO.	DESCRIPTION
RESISTORS (CONTINUED)		
R149		100K
R150		18K
R152		4.7K
R301		100K
R304		10K
R306		10K
R308		120K
R310		220 ohm
R312		820 ohm
R314		47K
R315		47K (Early Prod.)
R316		4.7K
R318		3.6K
R320		4.3K
R322		3.6K
R324		7.5K
R324A, C		4.3K
R326		47K
R402	37-34611-3	50K Variable - Four Section Volume
R404		4.7K
R502		3.3 meg, 1/2W, 10%
R504		68 ohm
R506		68 ohm
R508		330 ohm, 1W, 10%
R512		10 meg, 1/2W, 10%
R514		3.9K
R516		2.2K
R518		220 ohm, 1W, 10%
R520		220 ohm, 1/2W, 10%
R570	37-22053-3	5K Variable - CD4 Balance
R572	37-22053-3	5K Variable - CD4 Balance
R602		180K
R604		33K
R606		3.3K
R607		5.6K
R608		10K
R609		4.7K
R610	37-34651-1	100K Variable - Four Section Bass
R612	37-34651-1	100K Variable - Four Section Treble
R614		15K
R616		39K
R618		10K
R620		470K
R622		3.3K
R624		15K
R626		10 meg, 10%
R628		33K
R630		27K
R632		27K
R634		3.3K
R636		5.6K
R638AB/CD	37-34908-2	100K Variable - Dual Front/Rear Bal.
R638AC	37-34909-2	100K Variable - L/R Front Balance
R638BD	37-34909-2	100K Variable - L/R Rear Balance
R639		100K
R640		82K
R642		10K
R644		470 ohm
R646		10K
R648		1K
R650		10K
R652		3.3K, 1/2W, 10%
R654		820 ohm
R656		270 ohm
R658	37-33717-6	330 ohm Variable - Bias Adjust
R660		100 ohm
R662		10 ohm
R664		3.3K, 1/2W, 10%
R668		150 ohm
R672		2.7 ohm, 1/2W, 10%
R684		150 ohm
R686		2.7 ohm, 1/2W, 10%
R688	36-34726-7	.24 ohm, 2W, W/W
R690	36-34726-8	.27 ohm, 2W, W/W

SCHEMATIC DIAGRAM (AMP)

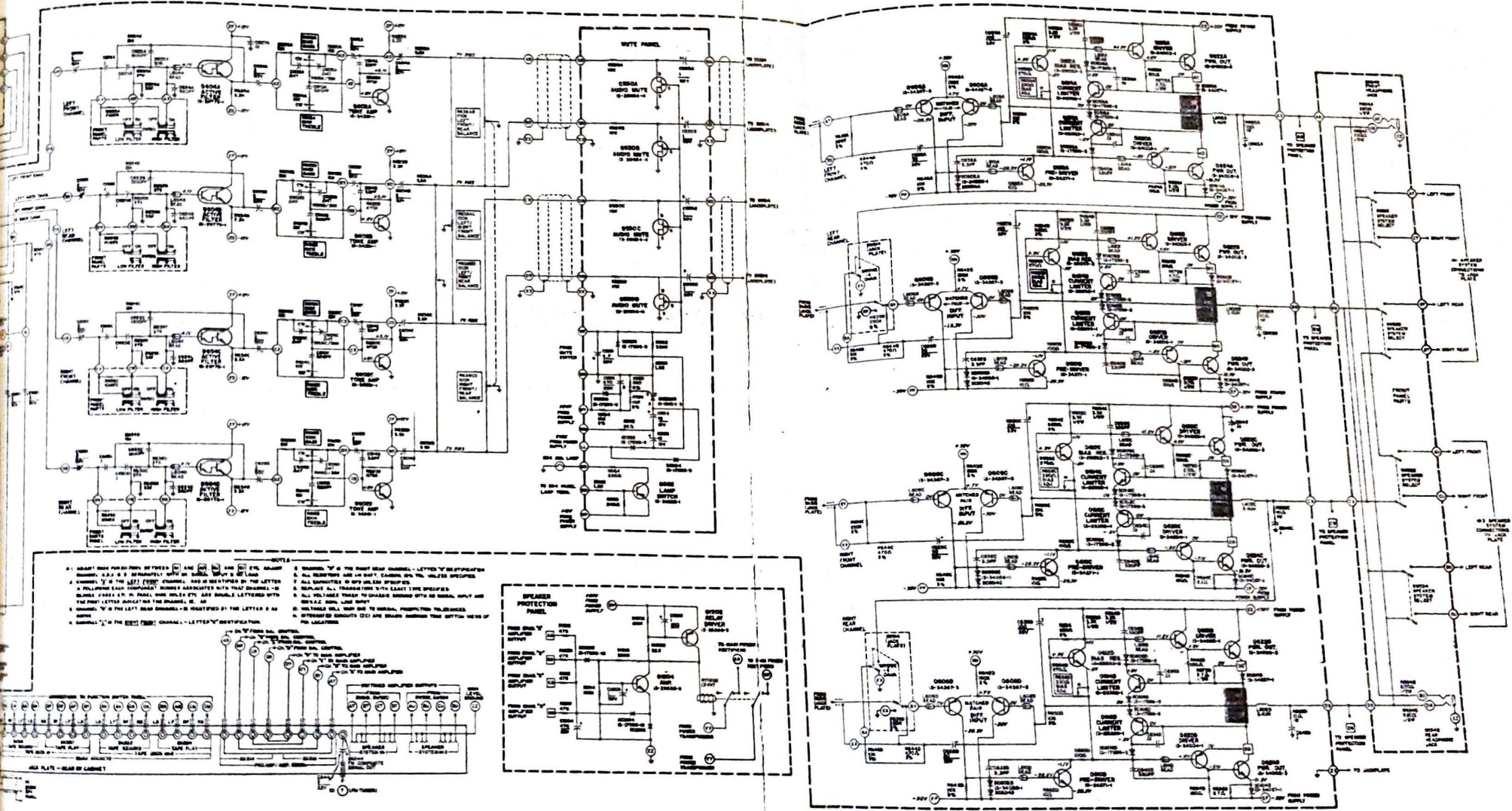


PRODUCT SAFETY NOTES

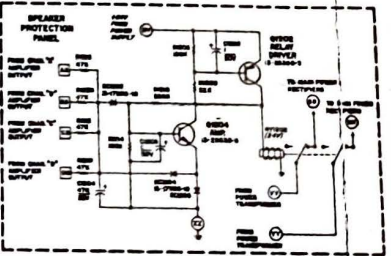
COMPONENTS IN THE SHADED AREAS OF THE SCHEMATIC AND PARTS LIST ARE CONSIDERED TO BE SPECIAL COMPONENTS. THE SPECIAL CHARACTERISTICS OF THESE COMPONENTS ARE VERY IMPORTANT TO THE SAFETY OF THE UNIT.

DO NOT REPLACE THESE COMPONENTS WITH ANY OTHER. USE OF SUBSTITUTE REPLACEMENT PARTS IS PROHIBITED.

SCHEMATIC DIAGRAM (AMP)



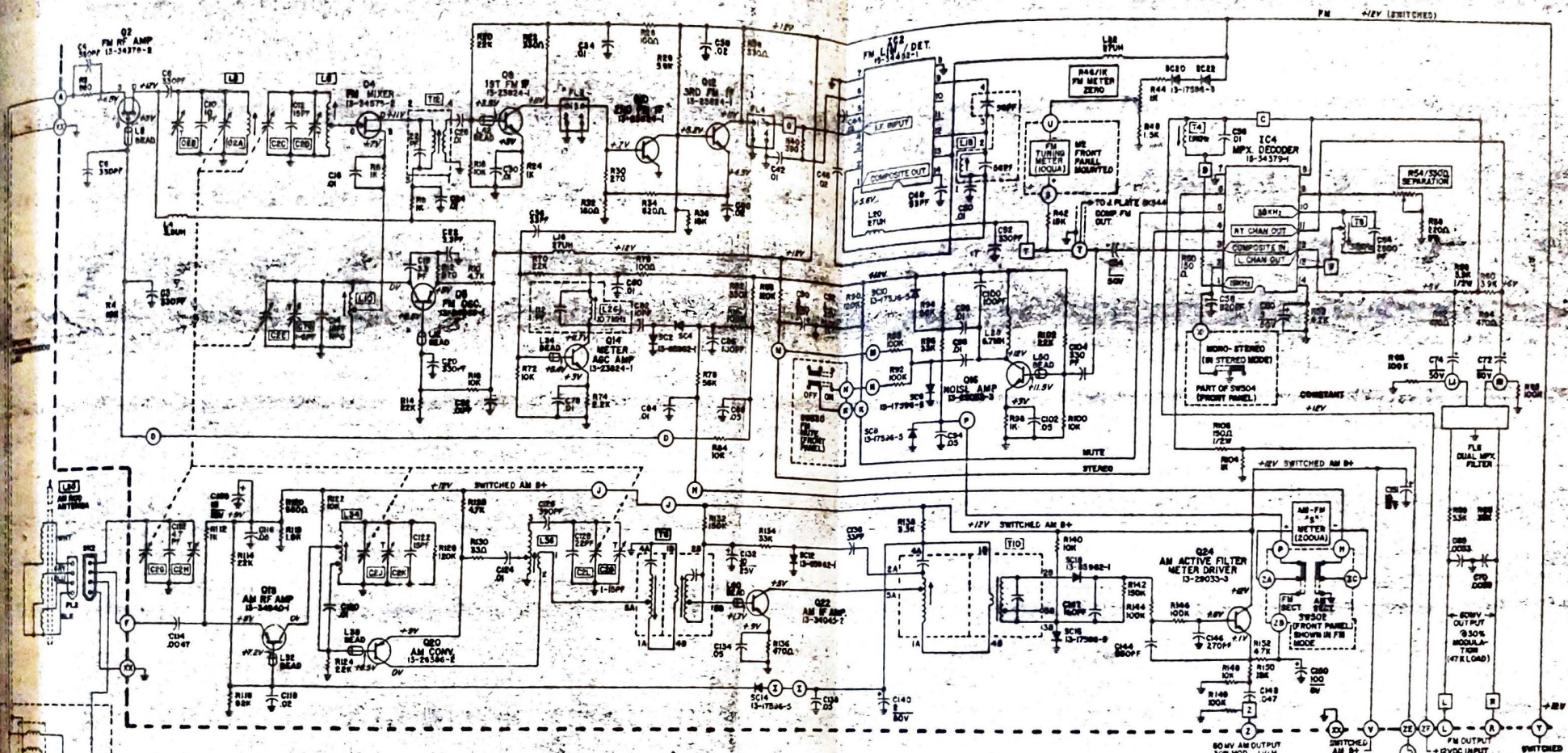
- NOTES:**
1. RESISTOR VALUE INDICATED BY LETTERS IN CIRCLES.
 2. CAPACITOR VALUE INDICATED BY LETTERS IN SQUARES.
 3. ALL TRANSISTORS ARE IN SILICON, EXCEPT WHERE SHOWN OTHERWISE.
 4. ALL TRANSISTORS ARE IN SILICON, EXCEPT WHERE SHOWN OTHERWISE.
 5. ALL TRANSISTORS ARE IN SILICON, EXCEPT WHERE SHOWN OTHERWISE.
 6. ALL TRANSISTORS ARE IN SILICON, EXCEPT WHERE SHOWN OTHERWISE.
 7. ALL TRANSISTORS ARE IN SILICON, EXCEPT WHERE SHOWN OTHERWISE.
 8. ALL TRANSISTORS ARE IN SILICON, EXCEPT WHERE SHOWN OTHERWISE.
 9. ALL TRANSISTORS ARE IN SILICON, EXCEPT WHERE SHOWN OTHERWISE.
 10. ALL TRANSISTORS ARE IN SILICON, EXCEPT WHERE SHOWN OTHERWISE.



PRODUCT SAFETY NOTES

SCHEMATIC AND PARTS LIST ARE CONSIDERED TO BE THE MOST ACCURATE. DO NOT REPLACE THESE COMPONENTS WITH ANY OTHER PARTS OTHER THAN THOSE SPECIFIED. USE OF SUBSTITUTE REPLACEMENT PARTS MAY CREATE SHOCK, FIRE OR OTHER HAZARDS.

SCHMATIC DIAGRAM (TUNER)



- NOTES:
1. ALL CAPACITANCES ARE IN PFD UNLESS SPECIFIED.
 2. ALL RESISTORS ARE CARBON, 1/4 WATT, 10% UNLESS SPECIFIED.
 3. MAINTAIN LINE AT 120V, 60Hz. FOR ALL MEASUREMENTS.
 4. TUNE RECEIVER TO 87.7 - STATION FOR VOLTAGE MEASUREMENTS.
 5. SELECT FM FUNCTION FOR FM VOLTAGES.
 6. SELECT AM FUNCTION FOR AM VOLTAGES.
 7. ALL VOLTAGES READ TO CHASSIS GROUND.
 8. VOLTAGES WILL VARY DUE TO NORMAL PRODUCTION TOLERANCES.
 9. SQUARE WIRE PINS (□) ARE TEST POINTS AND/OR WIRE WRAP CONNECTIONS.
 10. ROUND CONNECTIONS (○) ARE WIRE HOLES IN PCB PANEL.
 11. INTEGRATED CIRCUIT DRAWINGS (IC'S) SHOW BOTTOM VIEW.
 12. SWITCHES ARE DRAWN AT REST (OFF) POSITION UNLESS SPECIFIED.

BASING DIAGRAMS (BOTTOM VIEWS)

BLACK	10.64MHz	OR	OR	OR	OR	OR	OR	OR	OR
BLUE	10.67MHz	OR	OR	OR	OR	OR	OR	OR	OR
RED	10.70MHz	OR	OR	OR	OR	OR	OR	OR	OR
ORANGE	10.73MHz	OR	OR	OR	OR	OR	OR	OR	OR
WHITE	10.76MHz	OR	OR	OR	OR	OR	OR	OR	OR

TB, T30 BASING
 TB BASING

80 MV AM OUTPUT
 30% MOD., 100 W
 INPUT (23.5A LOAD)
 SWITCHED AM B+
 12V
 FM OUTPUT
 +12VDC INPUT
 150Ω STEREO LNB
 AMP (PANEL-33)
 (7X LOAD)
 TO CHASSIS
 SWITCH PANEL

TRANSISTOR REPLACEMENT GUIDE

SYLVANIA PART NUMBER	TYPE (ALL SILICON)	APPLICATION	DC CURRENT GAIN	EMITTER - COLLECTOR (DRAIN - SOURCE) VOLT. (MAX.) @ 25 DEG. C AMBIENT	EMITTER - BASE (GATE - SOURCE) VOLT. (MAX.) @ 25 DEG. C AMBIENT	MAXIMUM POWER DISSIPATION @ 25 DEG. C AMBIENT	ICBO (GATE CURRENT) MAXIMUM	BASING FIGURES
13-23824-1	NPN	Q8 - First FM IF. Q10 - Second FM IF. Q12 - Third FM IF. Q14 - Meter AGC Amplifier.	27-275	35V	3V	180mW	1uA	1, 2, 3
13-26386-1	PNP	Q552 (Mute Panel) - Lamp Switch.	100-350	32V	4V	200mW	.25uA	3, 4
13-26386-2	PNP	Q20 - AM Converter.	100-350	15V	4V	200mW	.25uA	3, 4
13-28392-1	NPN	Q814 - Current Limiter.	90-270	45V	4V	500mW	100nA	4, 5, 6
13-28393-1	PNP	Q816 - Current Limiter.	90-270	45V	4V	500mW	100nA	4, 6
13-28854-4	FET-N, CH.	Q650 (Mute Panel) - Audio Mute.	N/A	30V	30V	200mW	N/A	7, 8
13-29033-3	NPN	Q16 - Noise Amplifier. Q24 - AM Active Filter/Meter Driver. Q812 - Bias Regulator.	200-400	46V	4V	200mW	.05uA	3, 4
13-29775-1	NPN	Q604 - Active Filter.	5600 MIN.	25V	10V	200mW	100nA	3, 4
13-34002-3	PNP	Q622 - Power Output. Q624 - Power Output. Q618 - Driver.	30 MIN.	72V	58V	90W	N/A	9
13-34003-1	NPN	Q620 - Driver.	90-270	70V	5V	700mW	N/A	5, 10, 11, 12
13-34004-1	PNP	Q22 - AM IF Amplifier.	90-270	70V	5V	700mW	N/A	5, 10, 11, 12
13-34045-2	NPN	Q502 - Regulator Amplifier.	80-200	12V	3V	250mW	100nA	3
13-34046-1	NPN	Q606 - MATCHED Differential Input.	10-150	40V	4V	2.1W	100uA	13
13-34367-3	PNP	Q608 - MATCHED Differential Input.	SEE BELOW	50V	4V	300mW	10uA	3, 4, 14
13-34369-1	PNP	Q6 - FM Oscillator.	20 MIN.	20V	.85V	N/A	100nA	1
13-34371-1	NPN	Q610 - Pre Driver.	90-270	110V	4V	500mW	100nA	4, 10
13-34375-1	FET-N, CH.	Q4 - FM Mixer.	N/A	N/A	25V	200mW	N/A	7, 8
13-34378-1	FET-N, CH.	Q2 - FM RF Amplifier.	N/A	20V	10V	250mW	N/A	7, 15
13-34381-1	NPN	Q602 - Tone Amplifier.	225-450	30V	4V	200mW	.25uA	3, 4
13-34940-1	PNP	Q18 - AM RF Amplifier.	50-150	30V	4V	200mW	100nA	3, 4

DC CURRENT GAIN	100-160	150-210	200-260	250-310	300-360
BROWN DOT					
RED DOT					
ORANGE DOT					
YELLOW DOT					
GREEN DOT					

6	7	8	9 SEATING PLANE	10	11	12 SEATING PLANE

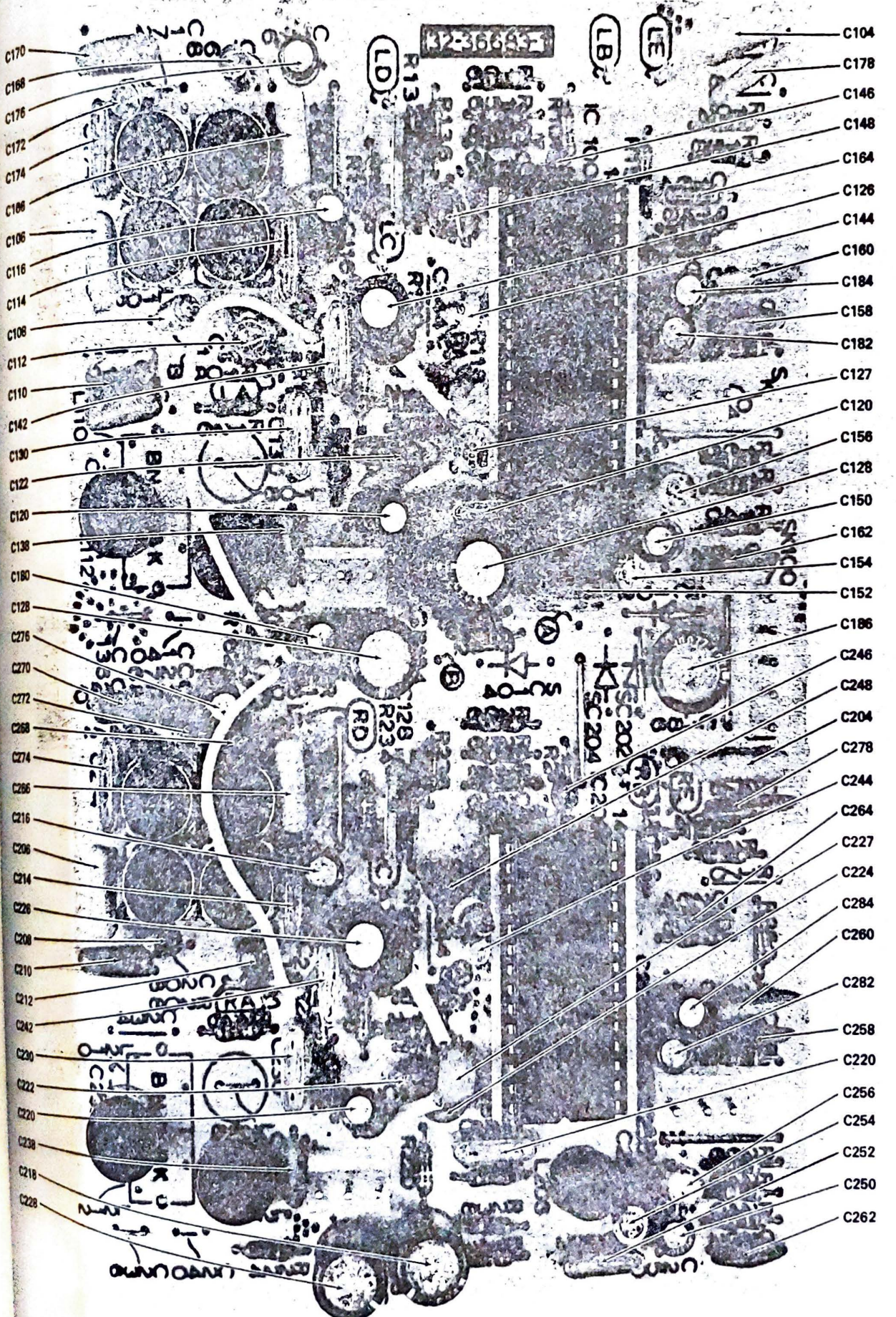
13	14	15

CABINET PARTS LIST RQ4747

DESCRIPTION	SERVICE PART NO.
FM Antenna	27-14926-2
BEZEL	
Cover Glass	74-34762-1
Dial	74-34928-1
Knob - Balance Control	74-34859-1
Knob - Bass, Treble (Inner Shaft)	74-34862-1
Knob - Bass, Treble (Outer Shaft)	74-34863-1
Knob - Toggle Switch	74-34797-1
Knob - Tuning	74-34861-2
Knob - Volume	74-34861-1
Nut - Headphone Jack Mounting	70-32649-1
Pushbutton	74-34913-1

DESCRIPTION	SERVICE PART NO.
Pushbutton Guide - 2 Button	74-34929-2
Pushbutton Guide - 6 Button	74-34929-1
Speed Clip - Dial Bezel to Escutcheon	70-34933-1
Speed Clip - Glass to Bezel	70-26679-1
Tuner	74-34763-5
CABINET	
End Cap - Left Hand	74-36448-2
End Cap - Right Hand	74-36448-1
Non-Skid Pad, Cabinet Bottom	88-28718-5
Vent - Cabinet Bottom	74-34761-1
Vent - Cabinet Top	74-34773-1

CD4 PANEL

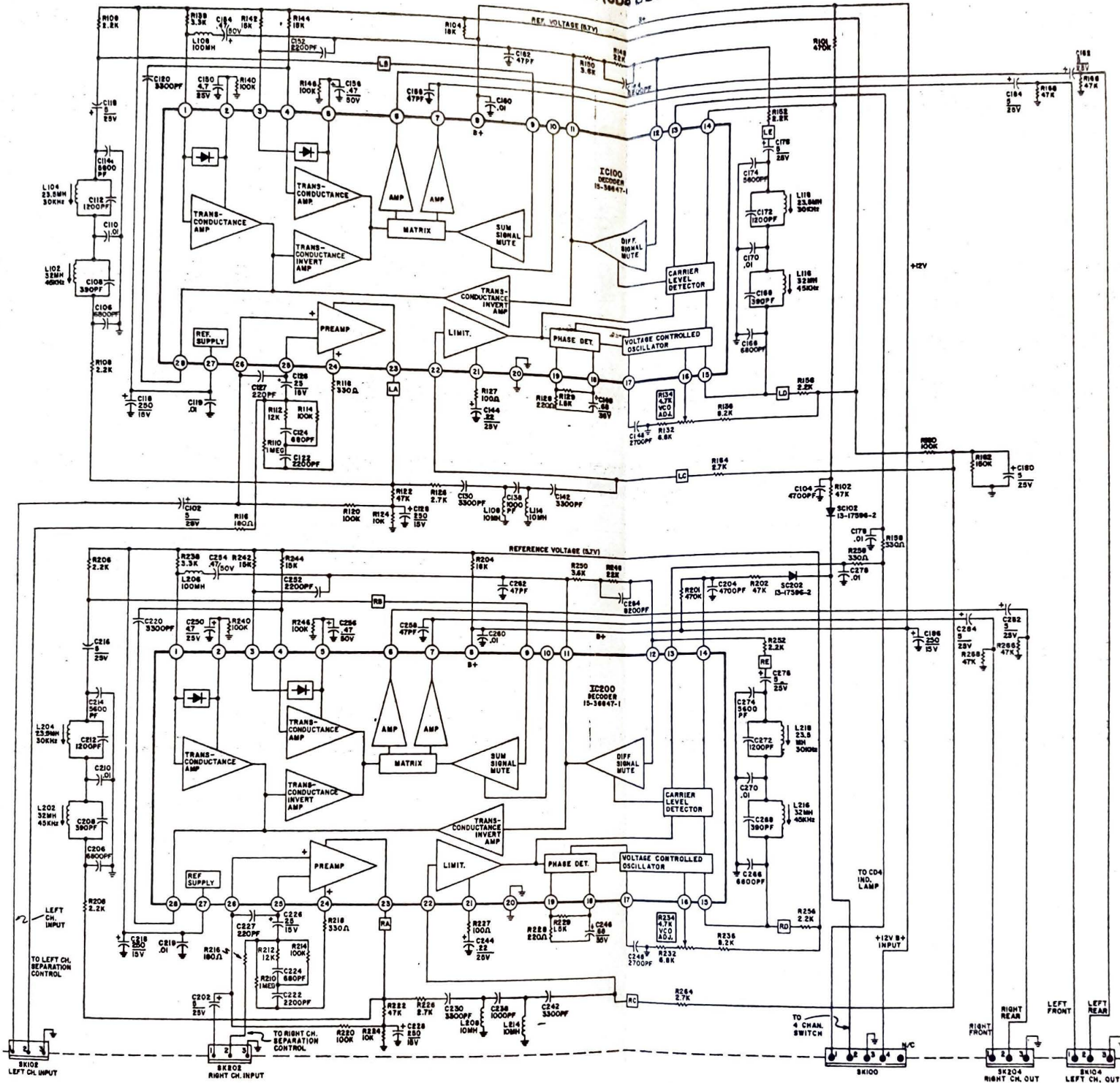


- C170
- C168
- C176
- C172
- C174
- C166
- C106
- C116
- C114
- C108
- C112
- C110
- C142
- C130
- C122
- C120
- C138
- C180
- C128
- C276
- C270
- C272
- C268
- C274
- C286
- C216
- C206
- C214
- C226
- C208
- C210
- C212
- C242
- C230
- C222
- C220
- C238
- C218
- C228

- C104
- C178
- C146
- C148
- C164
- C126
- C144
- C160
- C184
- C158
- C182
- C127
- C120
- C156
- C128
- C150
- C162
- C154
- C152
- C186
- C246
- C248
- C204
- C278
- C244
- C264
- C227
- C224
- C284
- C260
- C282
- C258
- C220
- C256
- C254
- C252
- C250
- C262

CAPACITORS

SCHEMATIC DIAGRAM (CD4 DECODER)



REPLACEMENT PARTS LIST (CD4 PANEL)

SCHEMATIC CODING	SERVICE PART NO.	DESCRIPTION
CAPACITORS (All values in MFD, unless otherwise specified)		
C102	41-32477-46	5/25V Electrolytic
C104		.0047, 150V
C106		.0068
C108	40-10285-50	390PF Polystyrene
C110		.01, 150V
C112	40-10285-55	1200PF Polystyrene
C114		5600PF
C116	41-32477-46	5/25V Electrolytic
C118	41-32477-38	250/15V Electrolytic
C119		.01, 100V
C120		3300PF
C122		2200PF
C124		680PF, Z5P
C126	41-32477-34	25/15V Electrolytic
C127		220PF
C128	41-32477-38	250/15V Electrolytic
C130		3300PF
C138		1000PF
C142		3300PF
C144	41-34346-2	.22/25V Electrolytic
C146	41-39324-149	.68/35V Electrolytic
C148	40-10285-44	.0027, 5% - Polystyrene
C150	41-32477-46	5/25V Electrolytic
C152		2200PF
C154	41-39148-84	.47/50V Electrolytic
C156	41-39148-64	.47/50V Electrolytic
C158		47PF
C160		.01, Z5U
C162		47PF
C164		.0082
C166		.0068
C168	40-10285-50	390PF Polystyrene
C170		.01, 150V
C172	40-10285-55	1200PF Polystyrene
C174		5600PF
C176	41-32477-46	5/25V Electrolytic
C178		.01, Z5U
C180	41-32477-46	5/25V Electrolytic
C182	41-32477-46	5/25V Electrolytic
C184	41-32477-38	250/15V Electrolytic
C186	41-32477-38	5/25V Electrolytic
C202	41-32477-46	.0047, 150V
C204		.0068
C206	40-10285-50	390PF Polystyrene
C208		.01, 150V
C210	40-10285-55	1200PF Polystyrene
C212		5600PF
C214	41-32477-46	5/25V Electrolytic
C216	41-32477-38	250/15V Electrolytic
C218		.01, 100V
C219		3300PF
C220		2200PF
C222		680PF, Z5P
C224	41-32477-34	25/15V Electrolytic
C226		220PF
C227	41-32477-38	250/15V Electrolytic
C228		3300PF
C230		1000PF
C238		3300PF
C242	41-34346-2	.22/25V Electrolytic
C244	41-39324-149	.68/35V Electrolytic
C246	40-10285-44	.0027, 5% - Polystyrene
C248	41-32477-46	5/25V Electrolytic
C250		2200PF
C252	41-39148-64	.47/50V Electrolytic
C254	41-39148-64	.47/50V Electrolytic
C256		47PF
C258		.01, Z5U
C260		47PF
C262		.0082
C264		.0068
C266	40-10285-50	390PF Polystyrene
C268		.01, 150V
C270		

SCHEMATIC CODING	SERVICE PART NO.	DESCRIPTION
CAPACITORS (CONTINUED)		
C272	40-10285-55	1200PF Polystyrene
C274		5600PF
C276	41-32477-46	5/25V Electrolytic
C278		.01, Z5U
C282	41-32477-46	5/25V Electrolytic
C284	41-32477-46	5/25V Electrolytic
RESISTORS (All 1/4W, Carbon, 5% unless otherwise specified)		
R101		470K
R102		47K
R104		18K
R106		2.2K
R108		2.2K
R110		1 meg
R112		12K
R114		100K
R116		180 ohm
R118		330 ohm
R120		100K
R122		47K
R124		10K
R126		2.7K
R127		100 ohm
R128		220 ohm
R129		1.5K
R132		6.8K
R134	37-14576-16	4.7K Variable - V.C.O. Adjust
R136		8.2K
R138		3.3K
R140		100K
R142		15K
R144		15K
R146		100K
R148		22K
R150		3.6K
R152		2.2K
R156		2.2K
R158		330 ohm
R160		100K
R162		150K
R164		2.7K
R166		47K
R168		47K
R201		470K
R202		47K
R204		18K
R206		2.2K
R208		2.2K
R210		1 meg
R212		12K
R214		100K
R216		180 ohm
R218		330 ohm
R220		100K
R222		47K
R224		10K
R226		2.7K
R227		100 ohm
R228		220 ohm
R229		1.5K
R232		6.8K
R234	37-14576-16	4.7K Variable - V.C.O. Adjust
R236		8.2K
R238		3.3K
R240		100K
R242		15K
R244		15K
R246		100K
R248		22K
R250		3.6K
R252		2.2K
R256		2.2K
R258		330 ohm

REPLACEMENT PARTS LIST (CD4 PANEL) (CONTINUED)

SCHEMATIC CODING	SERVICE PART NO.	DESCRIPTION
RESISTORS (CONTINUED)		
R264		2.7K
R266		47K
R268		47K
SOLID STATE DEVICES		
IC100	15-36647-1	Left Channel Decoder
IC200	15-36647-1	Right Channel Decoder
	72-36686-1	28 pin IC Socket
	13-17596-2	Diode
SC102		Diode
SC202	13-17596-2	
COILS		
L102	50-36692-4	32MH - Adjustable
L104	50-36692-3	23.5MH - Adjustable
L106	50-36694-25	100MH
L108	50-36693-25	10MH
L114	50-36692-4	32MH - Adjustable
L116	50-36692-3	23.5MH - Adjustable
L118	50-36692-4	32MH - Adjustable
L202	50-36692-3	23.5MH - Adjustable
L204	50-36694-25	100MH
L206	50-36693-25	10MH
L208	50-36693-25	10MH
L214	50-36692-4	32MH - Adjustable
L216	50-36692-3	23.5MH - Adjustable
L218	50-36692-3	
MISCELLANEOUS PARTS		
SK100	73-36679-5	Connector - 5 pin
SK102	73-36679-3	Connector - Left Channel Input
SK104	73-36679-3	Connector - Left Channel Output
SK202	73-36679-3	Connector - Right Channel Input
SK204	73-36679-3	Connector - Right Channel Output
	72-36686-1	Socket - Integrated Circuit

SPEAKER PROTECTION CIRCUIT

SCHEMATIC CODING	SERVICE PART NO.	DESCRIPTION
C1202	41-32477-85	1MFD, 50V Electrolytic
C1204	41-32477-50	50MFD, 25V Electrolytic
C1206	41-32477-85	1MFD, 50V Electrolytic
Q1202	13-26386-3	Transistor - Relay Driver
Q1204	13-29033-3	Transistor - Voltage Amp
R1206		Resistor - 100K, 1/4W, 5% - Carbon
R1208		Resistor - 22K, 1/4W, 5% - Carbon
R1210		Resistor - 220K, 1/4W, 5% - Carbon
R1212		Resistor - 47K, 1/4W, 5% - Carbon
R1214		Resistor - 100K, 1/4W, 5% - Carbon
R1216		Resistor - 47K, 1/4W, 5% - Carbon
R1218		Resistor - 47K, 1/4W, 5% - Carbon
R1220		Resistor - 47K, 1/4W, 5% - Carbon
RY1202	31-39947-2	Relay
SC1202	13-17596-10	Diode
SC1204	13-17596-10	Diode
SC1206	13-17596-10	Diode
	72-27200-5	Small 3-pin Transistor Socket

PRODUCT SAFETY GUIDELINES FOR ALL PRODUCTS

CAUTION: Do NOT modify any circuit. Service work should be performed only after you are thoroughly familiar with all of the following safety checks. Risk of potential hazards and injury to the user increases if safety checks are not adhered to.

SAFETY CHECKS

SUBJECT: Fire & Shock Hazard

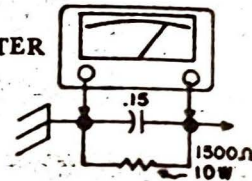
1. Be sure that all components are positioned in such a way to avoid possibility of shorts to adjacent components. This is especially important on those chassis which are transported to and from the repair shop.
2. Always replace all protective devices such as insulators and barriers after working on a set.
3. Check for damaged insulation on wires including the AC cord.
4. Check across-the-line components for damage and replace if necessary.
5. After re-assembly of the set, always perform an AC leakage test on the exposed metallic parts of the cabinet such as the knobs, antenna terminals, etc. to be sure the set is safe to operate without danger of electrical shock. Do not use a line isolation transformer during this test. Use an AC voltmeter having 5000 ohms per volt or more sensitivity in the following manner:
Connect a 1500 ohm 10 watt resistor, paralleled by

.15MFD AC type capacitor, between a known good earth ground (water pipe, conduit, etc.) and the exposed metallic parts, one at a time. Measure the AC voltage across the combination 1500 ohm resistor and .15MFD capacitor. Reverse the AC plug on the set and repeat AC voltage measurements again for each exposed metallic part. Voltage measured must not exceed .9 volts R.M.S. This corresponds to 0.2 milliamp AC.

Any value exceeding this limit constitutes a potential shock hazard and must be corrected immediately.

AC VOLTMETER

good earth ground such as the water pipe, conduit, etc.



place this probe on each exposed metallic part

INDEX

<u>CONTENTS</u>		<u>PAGE</u>
Parts Identification	- Audio Mute Panel	6
	- CD4 Decoder Panel	13
	- Speaker Protection Panel	21
Replacement Parts List	- Audio Mute Panel	5
	- CD4 Decoder Panel	19
	- Cabinet	12
	- Main Amplifier	2
	- Speaker Protection Panel	20
Schematic Diagram	- CD4 Decoder	17
	- R74-4 Amplifier	7
	- R74 Tuner	10
Transistor Replacement Guide		12