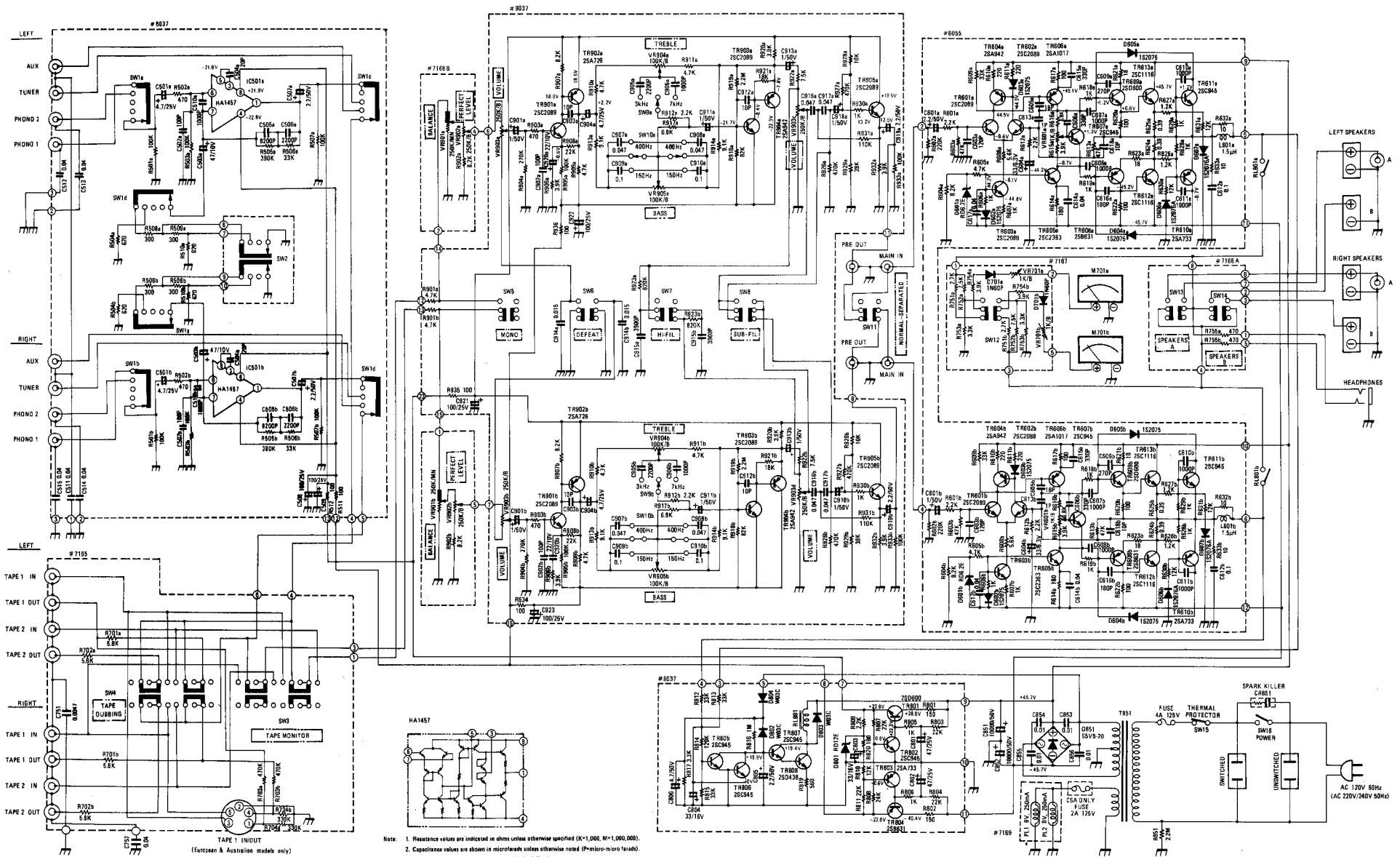


SCHEMATIC DIAGRAM



- Note:
1. Resistance values are indicated in ohms unless otherwise specified (K=1,000, M=1,000,000).
 2. Capacitance values are shown in microfarads unless otherwise noted (P=picofarads).
 3. DC voltages are referenced to ground under the following conditions:
No signal.
 4. Switch is shown in PHONO-1 position.

REALISTIC®