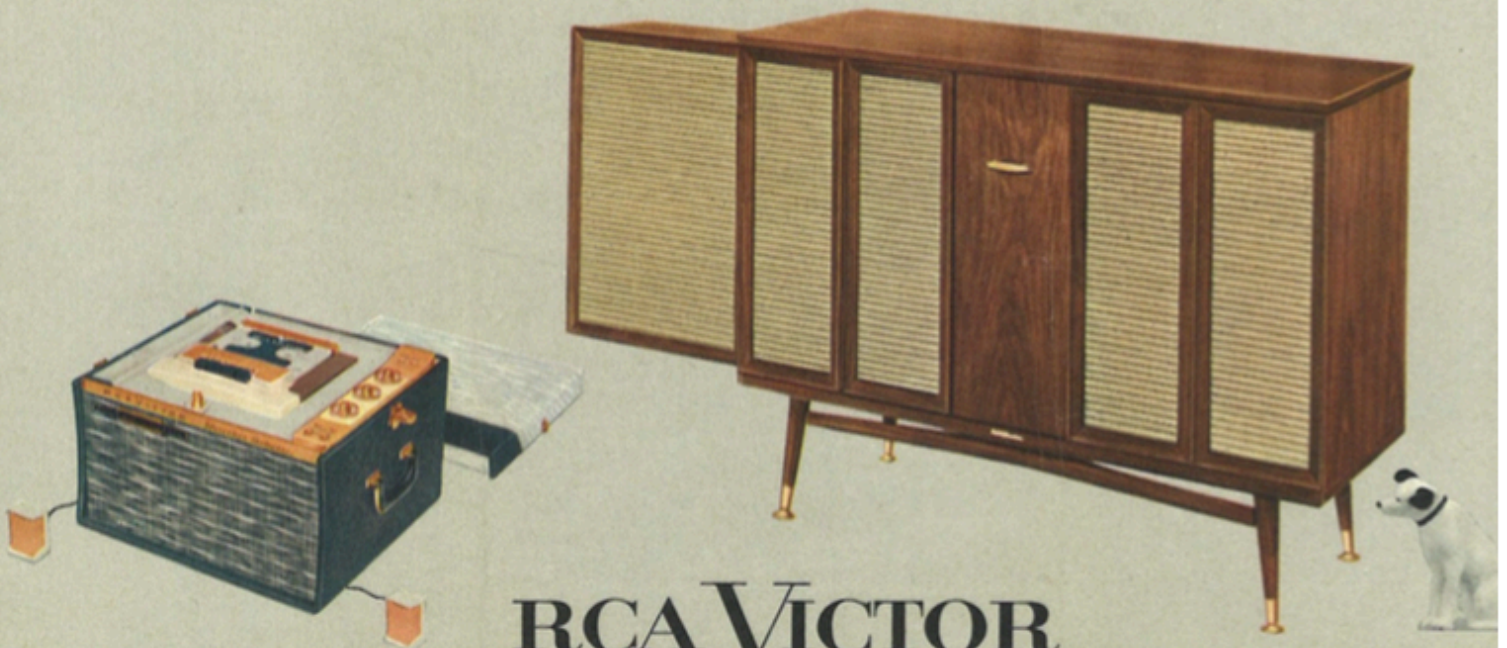




STEREO NEWSMAKERS FOR 1960

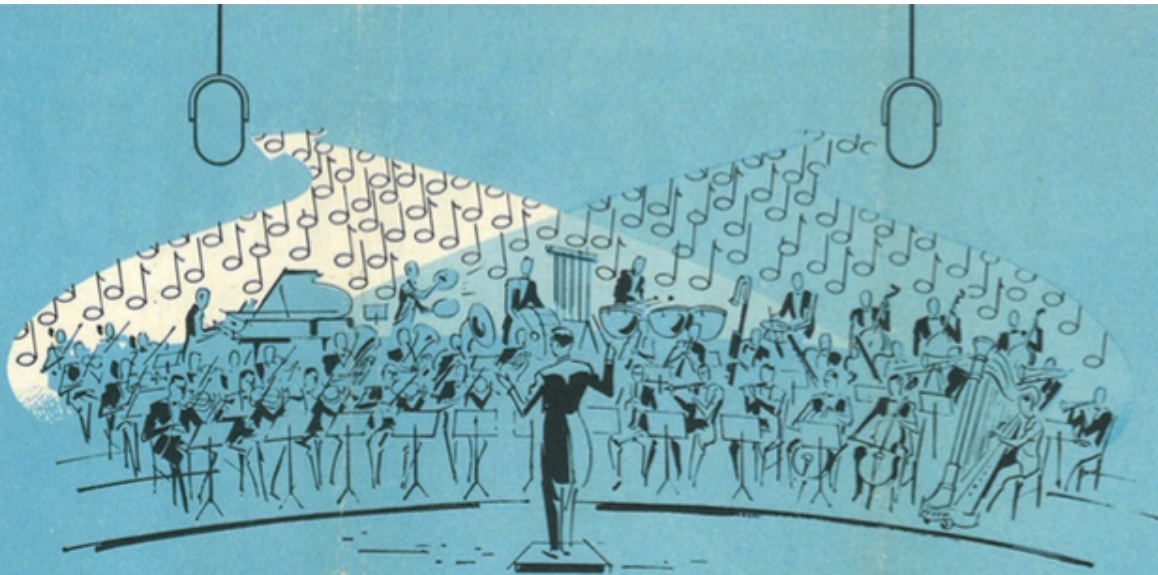
# LIVING STEREO

HIGH FIDELITY "VICTROLAS" *and* STEREO TAPE CARTRIDGE PLAYER/RECORDERS



## RCA VICTOR

FIRST STEREO PLANNED TO FIT YOUR HOME, YOUR TASTE AND YOUR BUDGET



*Put on a stereo record. Softly the violins speak to you from the left. Horns thunder from your right. The music is all around you; this is stereophonic sound. The secret? Stereo sound is recorded on the two sides of the grooves of your stereo records—and played back through RCA Victor's dual amplifier and two speaker systems. The result is the most realistic recorded music you've ever heard—"Living Stereo"—sound with depth and direction. You enjoy the finest stereo on records with RCA Victor's new Living Stereo High Fidelity "Victrolas." Or, choose a new RCA Victor Stereo Tape Cartridge Player/Recorder for the finest stereo sound on tape.*

**Enjoy stereo with 1 unit or 2**  
**RCA VICTOR "LIVING STEREO" HIGH FIDELITY NEWSMAKERS**



**ITALIAN PROVINCIAL.** Complete 2-in-1 stereo system. 6 speakers. Dual amplifier with 58-watt output. Visual indicators. Deluxe Stereo AM-FM radio with push-button controls. Tape recorder jack. In Mahogany, Italian Walnut and Sudan Cherry veneers and selected hardwoods. The *Mark IV* (Model TPM4). Matching companion speaker optional, extra. Height, 32"; Width, 49½"; Depth, 16½".



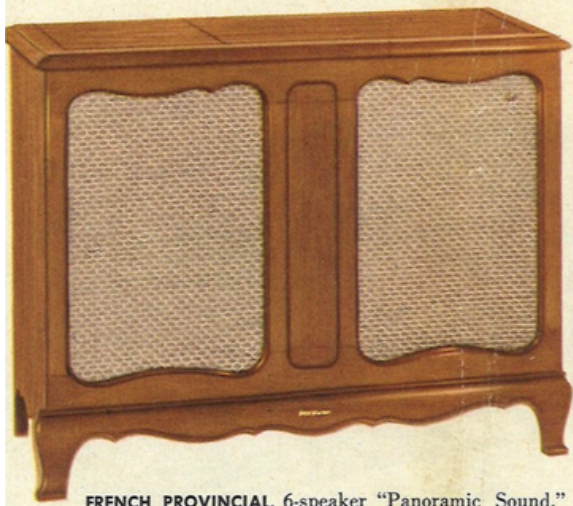
**COMPLETE 2-IN-1 STEREO SYSTEM** with 6 speakers. Left speaker unit swings out, lifts off for full-range stereo. Deluxe 4-speed record changer. Dual amplifier with 58-watt output. Deluxe Stereo AM-FM radio with push-button controls, visual indicators. In Mahogany, Oak and Walnut veneers and selected hardwoods. The *Mark VIII* (Model TPR8). Height, 32"; Width, 43"; Depth, 17".

*There is an RCA Victor television set available in cabinet styles and finishes to complement these "Living Stereo" Hi-Fi "Victrolas."*

There is an RCA Victor television set available in cabinet styles and finishes to complement these "Living Stereo" Hi-Fi Victrolas.

Enjoy stereo

## RCA VICTOR "LIVING STEREO"



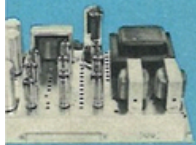
**FRENCH PROVINCIAL.** 6-speaker "Panoramic Sound." 58-watt dual amplifier. Diamond stylus. In Mahogany, Sudan Cherry and Maple veneers and selected hardwoods. The *Mark XVII* (Model PM17). With Stereo AM-FM radio, The *Mark XI* (Model TPM11). Matching companion speaker optional, extra. Height, 29½"; Width, 39"; Depth, 16%.



297<sup>00</sup>  
75<sup>00</sup>

**58-WATT DUAL AMPLIFIER.** Deluxe turntable. Dual controls. Diamond stylus. 6 speakers. Styled in three handsome cabinet finishes. The *Mark XVIII* (Model PM18). With Stereo AM-FM radio, The *Mark XII* (Model TPM12). Matching companion speaker optional, extra. Height, 31½"; Width, 37¼"; Depth, 16%.

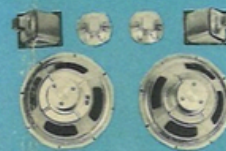
### RCA VICTOR "LIVING STEREO" GIVES YOU THE



**DUAL AMPLIFIER** combines the 2 amplifiers you need for stereo on 1 compact chassis. Provides clear high fidelity sound, fine tone balance.



**4-SPEED RECORD CHANGER**—easy action protects records. New turntable motor has fewer parts, reduces possibility of rumble. Automatic last-record shut-off.



**PANORAMIC SPEAKER SYSTEM** combines the woofers and tweeters you need for full frequency response—scientifically angled for best stereo and monaural sound.

with 1 unit or 2

# HIGH FIDELITY CONSOLES



**TRADITIONAL.** Complete 2-in-1 stereo system. 4 speakers. 24 watts. Dual bass/balance control. 4-speed record changer plays all records. Automatic shut-off. In three preferred finishes. The *Mark XIX* (Model PM19). Matching companion speaker optional, extra. Height, 31 1/4"; Width, 31"; Depth, 17".

**TV Set Available to Match Stereo Phono!**



**STEREO WITH MATCHING TV (Montgomery).** Enjoy thrilling stereo the "Victrola" alone—or you can use TV or matching companion speaker as the second channel for even greater sound separation. "Victrola" has diamond stylus. 4-speed record changer. Dual bass/balance control. Dual amplifier with 24-watt output. 4 speakers. 3 finishes. The *Mark XXII* (Model PM22) With Stereo AM-FM radio, The *Mark XXIII* (Model TPM13). Matching companion speaker optional, extra. Height, 31 1/4"; Width, 31"; Depth, 17 1/2".

WATTAGES SHOWN ARE MAXIMUM MUSIC POWER CAPACITY

## COMPONENTS YOU WANT—MATCHED BY EXPERTS

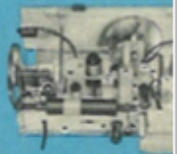
**MASTER CONTROL PANEL** includes balance control to equalize the speaker systems; dual loudness control; separate dual bass and treble controls for tone shading.



**PLUG-IN JACKS** let you add companion speaker; use "Victrola" as 2nd speaker system for stereo-tape player; permit direct electrical tapping of records for home use.



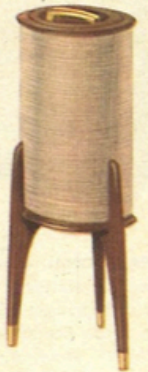
**STEREO AM-FM RADIO** lets you hear favorite programs on either band or AM-FM stereo broadcasts. Includes FM-Multiplex jacks for Multiplex adaptor.



## RCA VICTOR "LIVING STEREO" HIGH FIDELITY NEWSMAKERS

Enjoy Stereo with 1 unit or 2

Complete 3-unit Stereo



**REMOVABLE SWING-OUT SPEAKER** unit can be placed where you want it for optimum stereo. 4 speakers. 24-watt dual amplifier. 4-speed record changer. Diamond stylus. Balance control. In Mahogany, Oak and Walnut veneers and selected hardwoods. The *Mark XXI* (Model PR21). Height, 22" (without legs); Width, 31½"; Depth, 17"; Legs, 10".

**DANISH STYLING.** 12" speaker in "Victrola," plus 2 speakers in each of the two separate companion speaker systems let you enjoy stereo sound anywhere in your living room. 87 watts. 4-speed record changer with diamond stylus. In genuine Mahogany, Oak and Walnut veneers and selected hardwoods. The *Mark XVI* (Model PS16). "Victrola": Height, 31¼"; Width, 29½"; Depth, 16¾". Companion Speakers: Height, 25"; Diameter, 8¾".

Small in Size—Big in Quality

**RCA VICTOR TABLE AND CONSOLETTA**  
**"LIVING STEREO" HIGH FIDELITY**



**LOWBOY CONSOLETTA** with 17-watt dual amplifier, diamond stylus, 3 speakers. Companion speaker completes your stereo system. In four stunning finishes. The *Mark XXIII* (Model PD23). Height, 14"; Width, 28¾"; Depth, 16½"; Legs, 14".



**3-SPEAKER CONSOLETTA.** Diamond stylus. 17-watt output. Tape jack. 4-speed record changer. Companion speaker completes your stereo system. In 4 finishes. The *Mark XXIV* (Model PD24). Height, 11¼"; Width, 20"; Depth, 18"; Legs, 16".



**BUDGET-PRICED CONSOLETTA.** Dual amplifier. Twin pickup plays all records. Companion speaker completes your stereo system. In four luxurious finishes. The *Mark XXVII* (Model PD27). Height, 27"; Width, 20"; Depth, 18".



**COMPANION SPEAKER** designed for use with The *Mark XXIII* and The *Mark XXIV*. Features RCA's unique "Duo-Cone" speaker system with one 8-inch woofer and a free-floating tweeter. In same 4 finishes as "Victrolas." (Model KS23). Height, 10"; Width, 18"; Depth, 7½".



**COMPANION SPEAKER** designed for use with The *Mark XXVII*. Features RCA's unique "Duo-Cone" speaker system containing one 6½" woofer and a free-floating tweeter. In same finishes as "Victrolas." (Model KS27). Height, 10"; Width, 21¾"; Depth, 6".

PLAN YOUR HOME ENTERTAINMENT  
CENTER AROUND THIS

**RCA VICTOR**

"ADD-ON" STEREO HIGH FIDELITY  
"VICTROLA"



**DANISH MODERN** Stereo high-fidelity "Victrola" has optional matching companion speaker, record storage cabinet, bench, optional drop-in AM-FM radio for a complete home entertainment center. The *Mark IX* (Model SHP9).

## RCA VICTOR MATCHING COMPANION SPEAKERS



**MODEL K54.** Designed to match RCA Victor's Model TPM4. One 12-inch, one 5-inch, and two 3½-inch speakers. Height, 32"; Width, 23"; Depth, 13½".



**MODEL K511.** Complements stereo "Victrolas" Models TPM11 and PM17. One 12-inch and two 3½-inch speakers. Height, 29"; Width, 21"; Depth, 16".



**MODEL K512.** Designed to match RCA Victor's Models TPM12 and PM18. One 12-inch and two 3½-inch speakers. Height, 31"; Width, 22"; Depth, 16½".



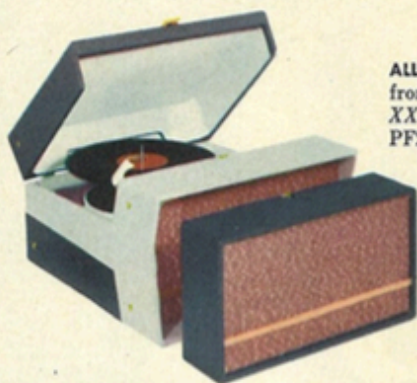
**MODEL K519.** Designed to match RCA Victor's Model PM19. Contains one 12-inch, two 3½-inch speakers. Height, 31"; Width, 22½"; Depth, 17".



**MODEL K513.** Complements stereo "Victrola" Models TPM13 and PM22. Contains one 8-inch, one 12-inch, and two 3½-inch speakers. Height, 31"; Width, 20"; Depth, 17½".

**Music you can carry with you . . . NEW RCA VICTOR  
PORTABLE NEWSMAKERS IN SOUND**

Enjoy stereo sound wherever you go. These portable "Victrolas" have a second speaker system, either in the lid or snap-mounted on the front, that can be removed and placed where you want for full-range stereo sound. Great for dances, parties — or just plain listening.



**ALL-IN-1 STEREO HI-FI.** Companion speaker "snaps off" front. 15 watts. 2-tone gray simulated leather. The *Mark XXVI* (Model PF26). With diamond stylus (Model PF26D). Height, 10 $\frac{1}{4}$ "; Width, 18"; Depth, 21 $\frac{1}{4}$ ".



**LIFT-AWAY LID** contains second speaker system for stereo hi-fi. Dual amplifier. 4 speakers. Dual controls. 2-tone brown simulated leather. The *Mark XXVIII* (Model PL28). Height, 9"; Width, 18"; Depth, 19 $\frac{1}{4}$ ".



**BUDGET-PRICED STEREO.** "Lift-away" lid contains companion speaker system for stereo sound. Dual amplifier. 4 speakers. In 2-tone green simulated leather. (Model SES7). Height, 8 $\frac{1}{4}$ "; Width, 16 $\frac{1}{16}$ "; Depth, 18 $\frac{1}{16}$ ".

**4-SPEED SINGLE PLAY PORTABLE.** Finger-tip speed control. Twin stylus. Tough vinyl-on-steel case. In brown or white Alligator, or blue or saddle Morocco. (Model 1EMP2). Height, 5 $\frac{1}{2}$ "; Width, 12 $\frac{1}{2}$ "; Depth, 10 $\frac{1}{4}$ ".

**RCA VICTOR'S  
Lowest-priced phono**



# TAPE CARTRIDGE PLAYER/RECORDER

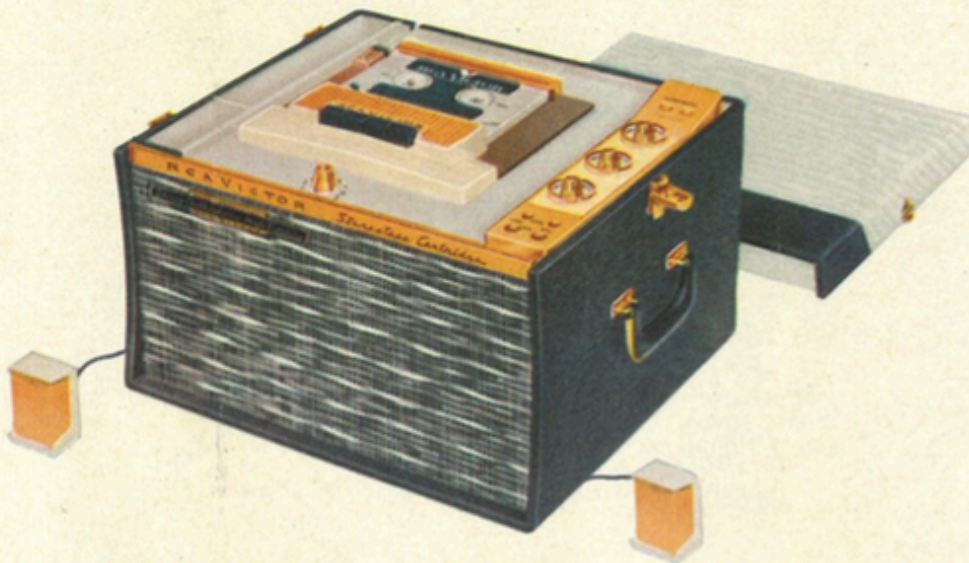
TAPE SPEED OF 3 3/4 IPS

RESPONSE FROM 70 TO 15,000 CYCLES

PULL-PUSH ON-OFF VOLUME CONTROL

BALANCE

SINGLE STEREO BALANCE CONTROL



**MODEL SCP2** stereo and monaural playback and recording. Up to 2 hours of music on each tape cartridge. New dual amplifier. "Precision-Play" 4-track tape transport. Push-button controls. 3 speakers. New microphone. 12 watts. Charcoal-and-Antique White.

FOOLPROOF NO-ERASE PROTECTION

ACCURATE INDICATOR

RECORD LEVEL  
NORMAL OVER

RECORDING MONITOR

3-SPEAKER SOUND SYSTEM

**Out of RCA electronics—a totally new concept in Tape Recorders**

**RCA VICTOR STEREO**

- Magazine-loading tape cartridge just drops in. No threading...no rewinding...no reels to handle. Easier to use than records.
- Brings pre-recorded tapes down to the price of records...cuts cost of high fidelity recording on blank tape as much as 36%.
- Plays and records up to 2 full hours on a single cartridge—equal to a stack of 20 "45" records.
- Lets you *record* and *play back* in both stereo and monaural high fidelity.

