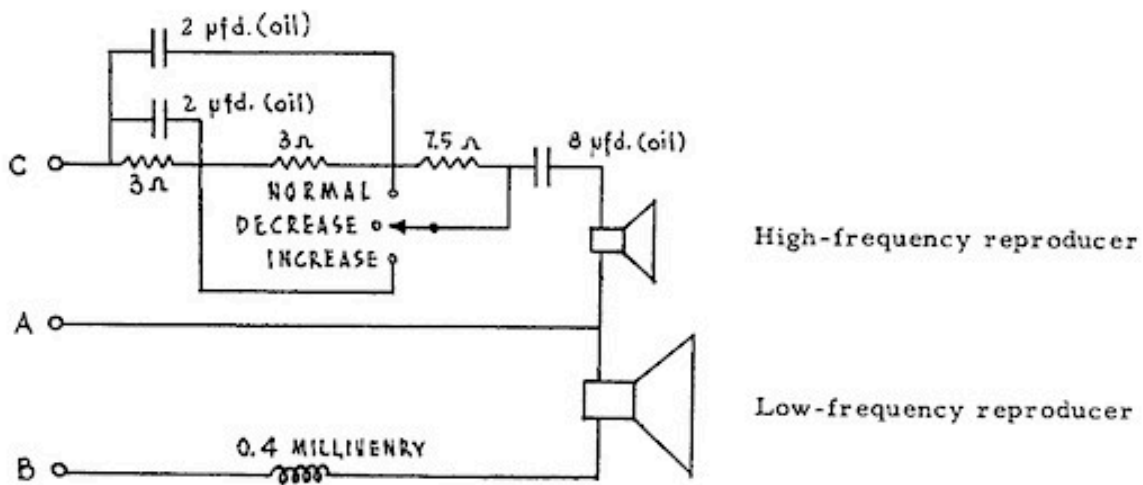


INTERNAL WIRING OF THE MODEL SIX

While it is not necessary to know the internal wiring in the Model Six to understand the above instructions, a diagram of the internal wiring is given below for those who might be interested.

Note: The sense of the internal speaker connections is such that the cones move toward the front of the cabinet when terminals B and C are connected to the center (positive) terminal of a dry cell and terminal A to the case (negative) of the dry cell.



WARRANTY AND GUARANTEE

The loudspeaker mechanisms in the Model Six were designed and manufactured entirely by KLH Research and Development Corp. KLH warrants that this speaker system is free from any defect in materials or workmanship at the time it leaves the factory. KLH guarantees the repair or replacement without charge of any component which becomes defective within two years under normal use, PROVIDING THAT THE WARRANTY CARD IS RETURNED TO KLH IMMEDIATELY AFTER THE PURCHASE. If at any time you suspect that your Model Six is not operating properly, first make certain that all other components in your system are operating properly. If you still believe the Model Six is at fault, consult your authorized KLH dealer. We will cooperate with him fully in implementing our guarantee. However, written authorization must be obtained from us before the speaker system is returned to our plant.