



NIVICO

No. 2136

SERVICE MANUAL



MODEL SRP-B30E/5230

STEREO RECORD PLAYER

DIMENSIONS: Height-7 $\frac{3}{4}$ ", Width-19 $\frac{3}{4}$ ", Depth-15 $\frac{1}{2}$ " WEIGHT: 20 lbs.

SPECIFICATIONS

Type:	2-speed, belt-drive, auto-return system, stereo record player
Motor:	4 poles outer rotor, condenser, motor
Turntable Speed:	33 $\frac{1}{4}$, 45 r. p. m.
Pick-up:	Perfect pipe arm, universal type
Cartridge:	Induced magnet type with diamond stylus
Drive System:	Isolated belt drive (ID) system
Needle Pressure:	1.5~3.5 grams (adjusting range : 0~5 grams)
Needle:	DT-25H (for ST, LP)
Power Source:	AC 100~240V, (Selectable) 50/60 Hz
Power Consumption:	50 Hz; 8.0 VA, 7.5W 60 Hz; 9.5 VA, 9W

VICTOR COMPANY OF JAPAN, LTD.

MAIN VOLTAGE ADJUSTMENT

This player is equipped with an universal power transformer for use on 100~240 volts power supply. To adjust, reset the adjusting plug, which is on the rear of cabinet, for proper voltage position.

CYCLE ALTERATION

If the supply cycle differs from 50 to 60 Hz, or vice versa, replace motor pulley only, motor wirings are not to be altered.

—See Fig. 1—

50 Hz Pulley; M6239-A

60 Hz Pulley; M6239-B



Fig. 1

REPLACING NEEDLE

Worn out stylus makes noise and distorted sound.

Take off worn out stylus and insert new one (A) into (B).

—See Fig. 2—

Replacement needles=DP-451. (Diamond stylus life time; 1000~2000 hours)

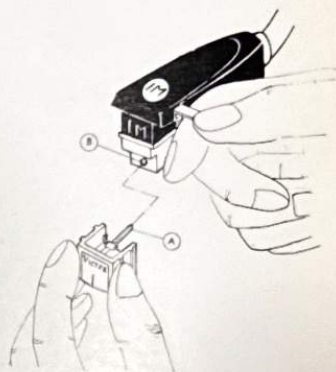


Fig. 2

REPLACING CARTRIDGE

The tone arm accepts universal cartridge at your choice. To replace the cartridge, remove the head by rotating the connector nut to counter-clockwise. Replace the desired cartridge, with special care for the correct polarity of wiring.

Replacing with the same cartridge (NIVICO PH-1) requires needle pressure adjustment for 3 grams.

Replacing with the another type cartridge requires balance and needle pressure adjustments.

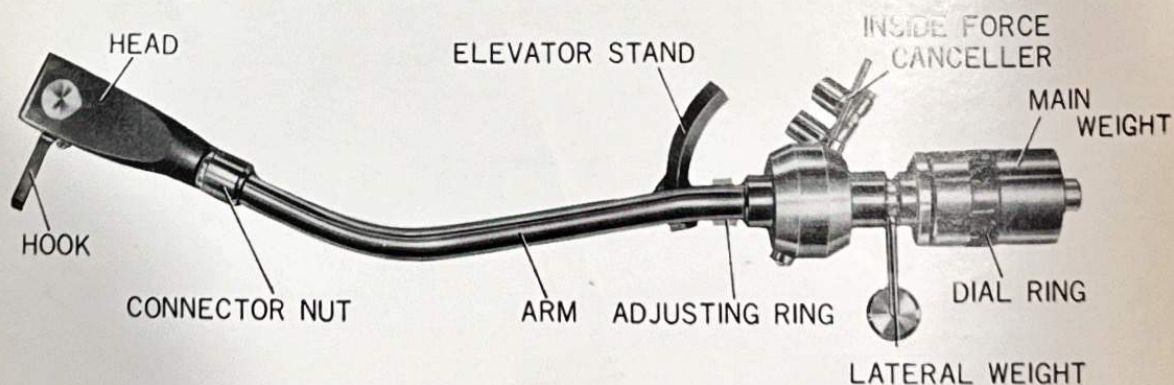


Fig. 3

NEEDLE PRESSURE ADJUSTMENT

When replacing the stylus and the cartridge, needle pressure should be adjusted.

Adjust the stylus tip to be on the record level by rotating the main weight. —See Fig. 4—

To fix the main weight not to turn with hand, rotate the dial ring to "O" position. —See Fig. 5—

Then, adjust the main weight to required needle pressure value. —See Fig. 6—

(If the required stylus pressure is 3 gm, the dial will show as in Fig. 6 when the weight is adjusted)

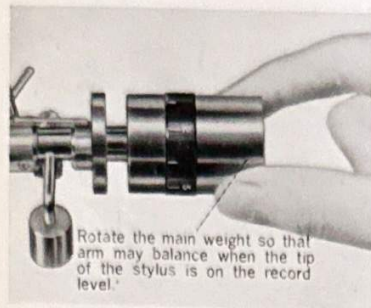


Fig. 4

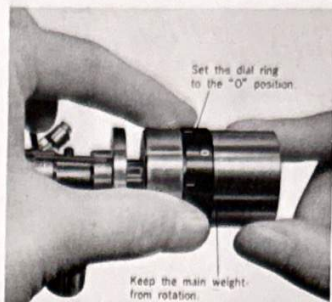


Fig. 5

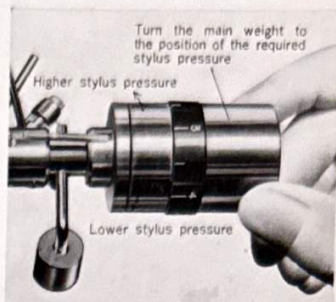


Fig. 6

LATERAL BALANCE ADJUSTMENT

Lateral balance weight is for balancing horizontal direction. To adjust, loosen the set screw and slope player in front and in the rear. Then, by adjusting the lateral balance weight, make the tone arm not to move to horizontal direction.

INSIDE FORCE CANCELLER

When using the player at stylus pressure less than 1.5 grams, take off the inside force canceller by swinging away tone arm leftward.

AUTO-RETURNING FUNCTION

After replacing the cartridge, make sure of following items. Without placing records on turntable and removing the needle cover from needle, confirm that tone arm automatically returns correctly.

[Note] When the gap between the turntable and needle tip is less than $7\frac{m}{m}$, at the time of return operation, adjust it by removing adjusting ring along the center of elevator stand.

PLAYER DISASSEMBLY

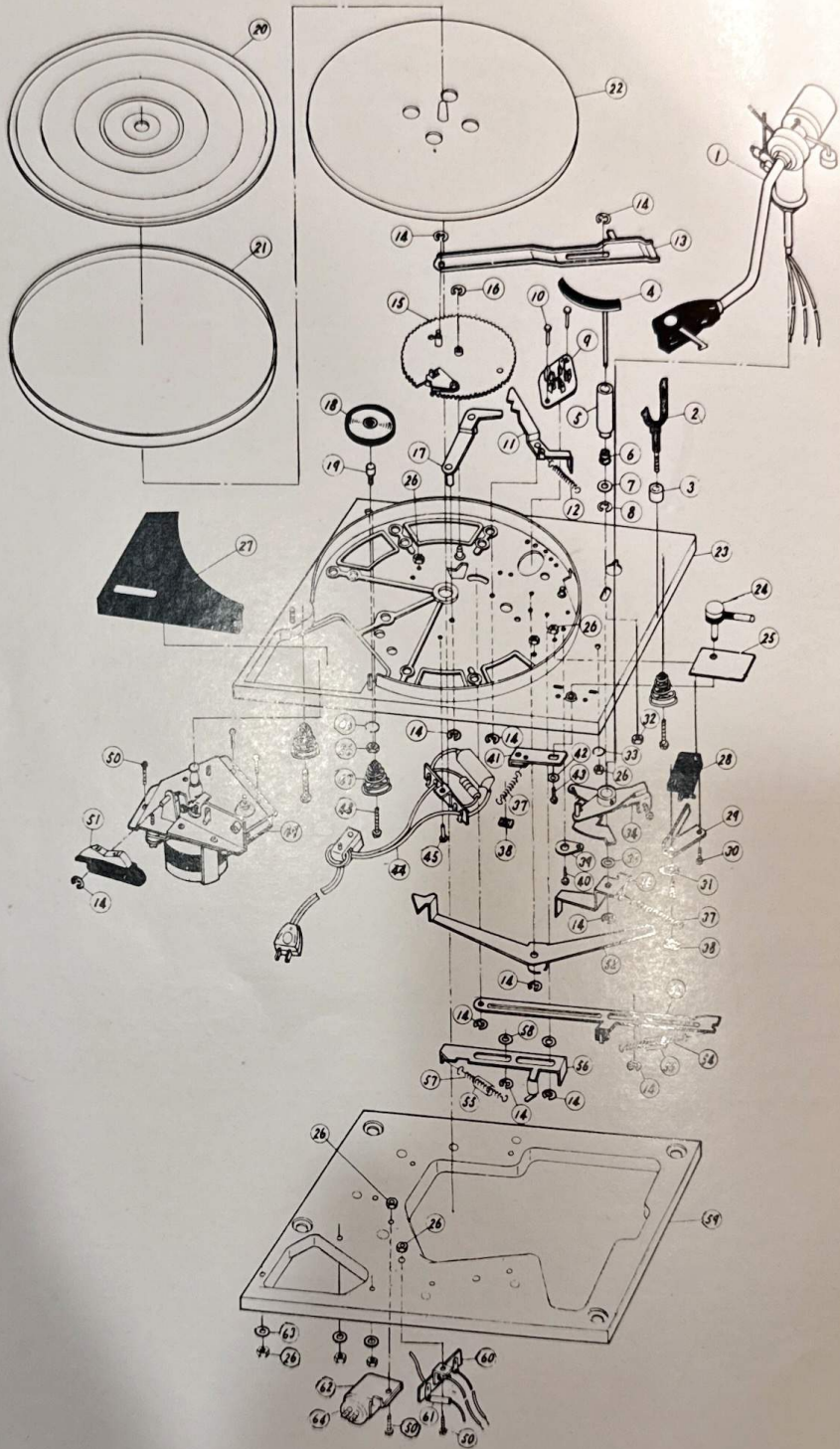


Fig. 7

PHONOMOTOR DISASSEMBLY

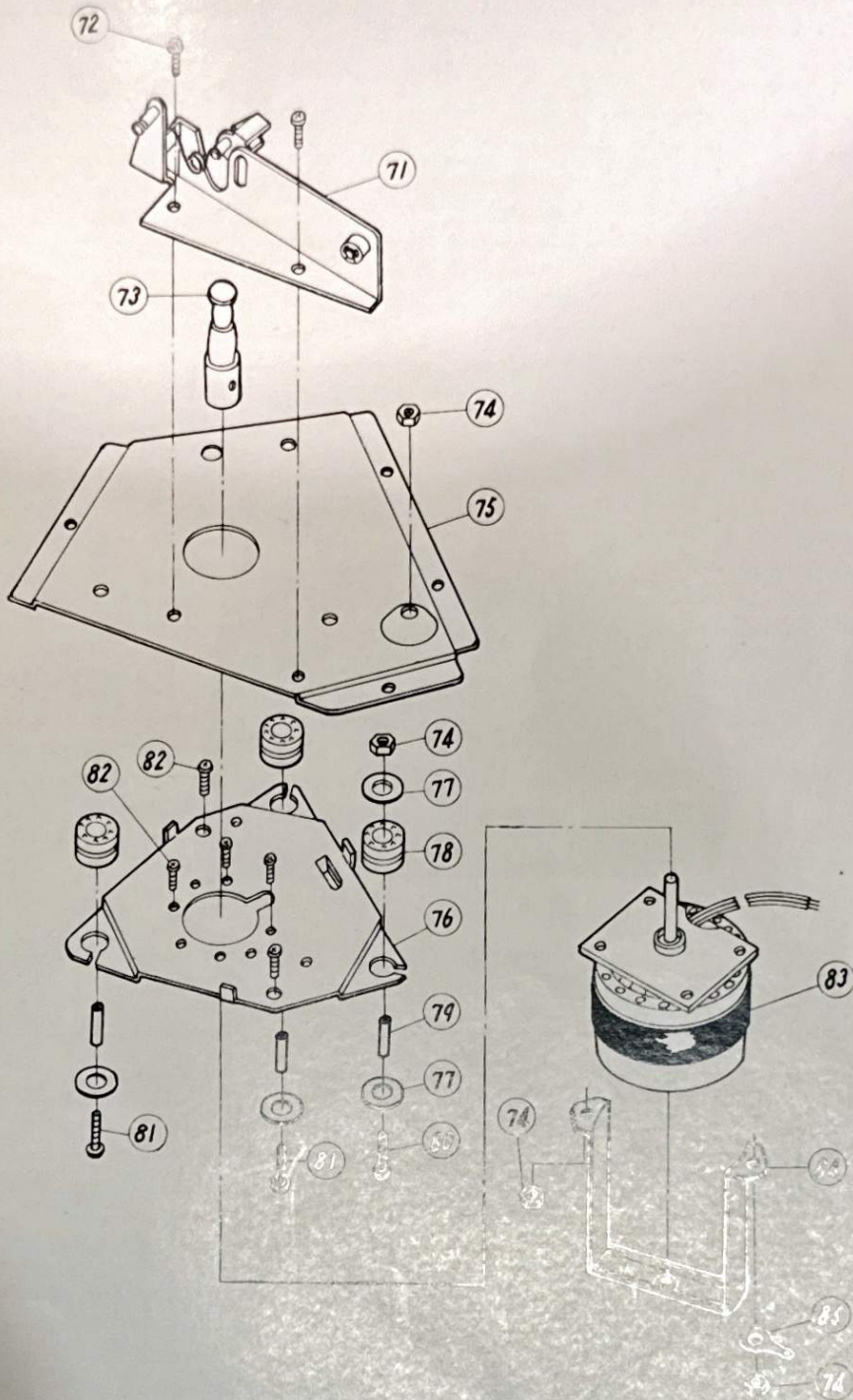


Fig. 3

CABINET PARTS ILLUSTRATION

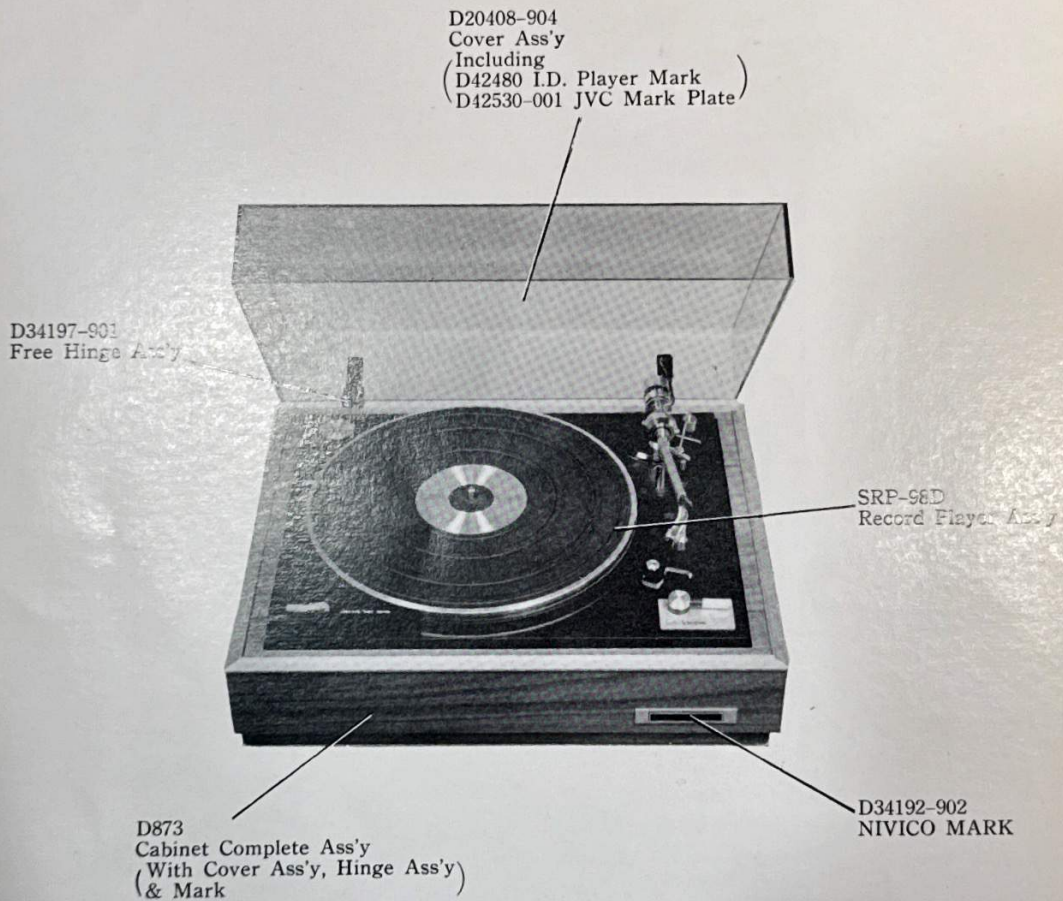


Fig. 9

REPLACEMENT PARTS LIST FOR RECORD PLAYER

DWG. NO.	PARTS NO.	PARTS NAME	DWG. NO.	PARTS NO.	PARTS NAME
1	MP-104Sb	Pick up Ass'y	33	WLS4000	Lock Washer
2	G3318-A	Pick up Rest Ass'y	34	G6459-D	Pick up Arm Lever Ass'y
3	G6917	Base	35	Q03095-214	Washer
4	G6929-A	Elevator Arm Ass'y	36	G6930	Key
5	G4805	Elevator Base	37	G6303	Spring
6	G4806	Spring	38	52574-2	Speed Nut
7	G4675-1	Washer	39	G6925	Supportor
8	G4035-6	"E" Washer	40	SBSB3005Z	Tapping Screw
9	G3343-B	Signal Wire Ass'y	41	G6923	Reject Lever
10	RTA3008	Rivet	42	WNB2600	Washer
11	G6453-C	Stopper Ass'y	43	LPSP2606Z	Assembly Screw
12	G6303	Spring	44	G6914-B	Lug Strip Ass'y
13	G3324-A	Return Lever Ass'y	45	RTA3008	Rivet
14	REE3000	"E" Ring	46	WLS3000	Lock Washer
15	G3235-B	Gear Ass'y	47	G6937	Conical Spring
16	REE5000	"E" Ring	48	LPSP4005Z	Assembly Screw
17	G6484-C	Idler ON Lever Ass'y	49	EM-50826A	Phono Motor Ass'y
18	G6519-B	45 r.p.m. record Adaptor	50	LPSP3025Z	Assembly Screw
19	G6876	Adaptor Holder	51	G6936-A	Speed Select knob
20	G2099-B	Turntable Covering	52	G3320	Trip Lever
21	G3326	Belt	53	G3322-A	ON Lever Ass'y
22	G2101-A	Turntable Ass'y	54	G6499	Spring
23	G1082-A	Motor Board Ass'y	55	04226-L-2	Vinyl Tube
24	G6921-A	Reject Knob Ass'y	56	G6932-A	OFF Lever Ass'y
25	G6922	Escutcheon Plate	57	G6285	Spring
26	NTB3000	Nut	58	Q03095-214	Fiber Washer
27	G2102	Control Panel	59	G2103	Floating Board Ass'y
28	G6497	Micro Switch	60	G6915	Lug Strip Ass'y
29	G6734	Spring	61	G6523-E	Vinyl Wire
30	LPSP3020Z	Assembly Screw	62	C6327	Band
31	M5160	Terminal Lug	63	WNB3000	Washer
32	G4799	Nut	64	FG9018	Condenser

REPLACEMENT PARTS LIST FOR PHONOMOTOR ASS'Y

• SRP-98D

DWG. NO.	PARTS NO.	PARTS NAME	DWG. NO.	PARTS NO.	PARTS NAME
71	M6237	Select Lever	79	M0313-134	Spacer
72	LPSP3005Z	Assembly Screw	80	LPSP4030Z	Assembly Screw
73	M6239-A or B	Pulley (A-50Hz, B-60Hz)	81	LPSP4025Z	" "
74	NTB4000	Nut	82	LPSP3006Z	" "
75	M3394	Motor Mouting Plate	83	m-508-E	Motor Unit only
76	M3397	Motor Mouting Plate (A)	84	M4760-A	Bracket Ass'y
77	Q03091-109	Washer	85	52396	Terminal Lug
78	52992-1	Rubber Bushing	86		

THE LIST OF MISCELLANEOUS PARTS FOR REPLACEMENT

SCHEMATIC

PARTS NO.	PARTS NAME	DESCRIPTION
D822	Cabinet Ass'y	
E03010-8	Universal Transformer	
Q30066	Plug Ass'y	Power
E50395-2	Packing Screw	
E30580-120A	Instruction Manual	
E36941-002	Packing Case Ass'y	
MD-1011Hb	Cartridge Ass'y	Induced Magnet Type with Needle
DT-25Hb	Needle	
M6239-A or B	Pulley	A-50Hz, B-60Hz

Requirement to Customers

- ◎ For the purpose of prompt supply of service parts, inscribe parts number, parts name, and model name correctly when you order.
- ◎ If possible please give an order for spare cabinet in early opportunity since it is very difficult to remanufacture wooden cabinet after production of the set was discontinued.

— — — — —

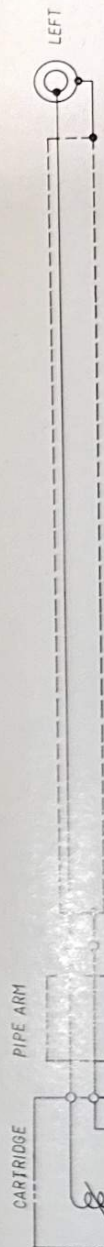
JVC AMERICA, INC.

50-35, 56th Road Maspeth

New York, N. Y. 11378

Manufactured by

VICTOR COMPANY OF JAPAN, LTD.



SCHEMATIC DIAGRAM

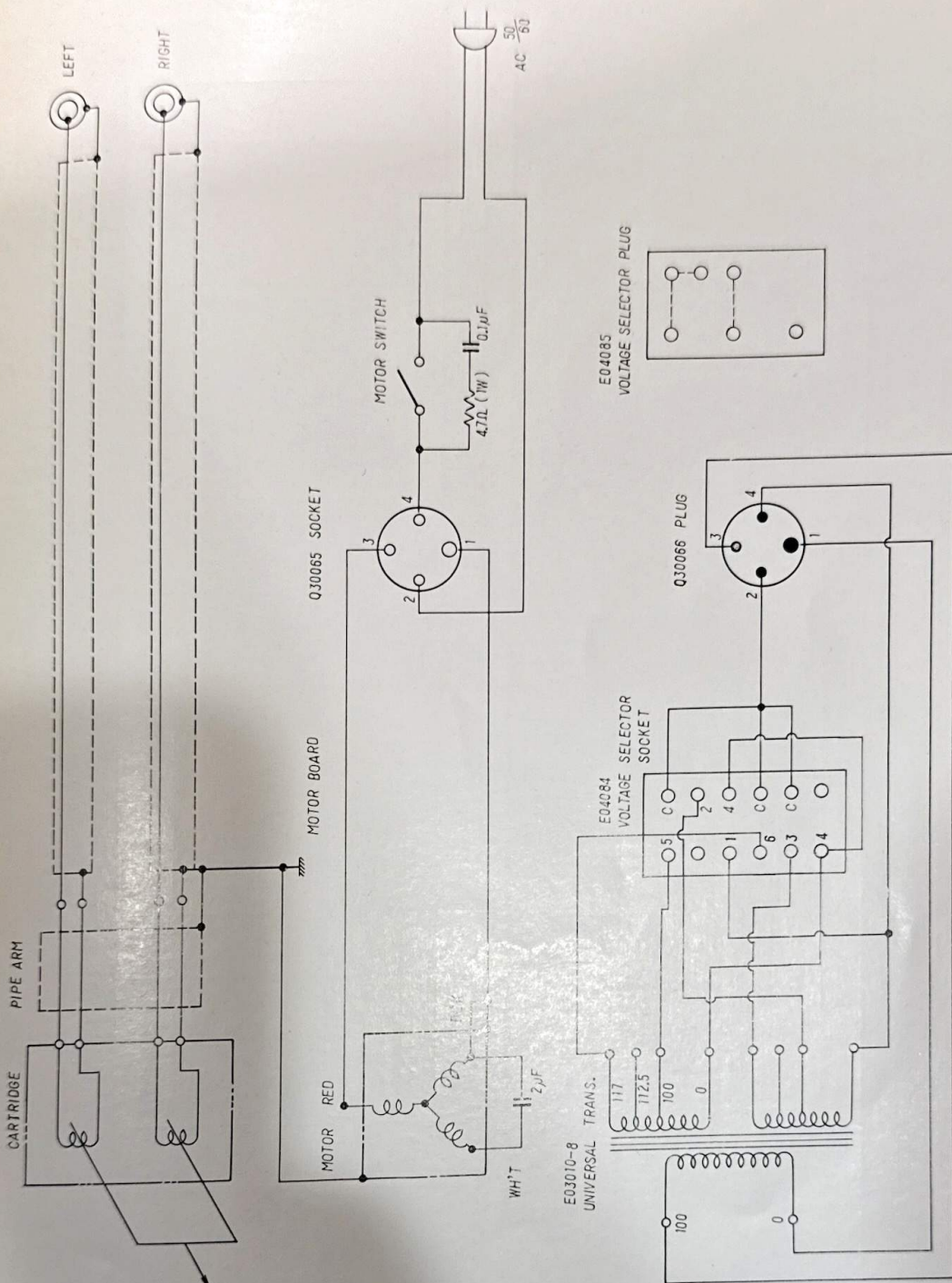


Fig. 10

The List of NIVICO Service Manual

(Phonograph)

No.	Model	No.	Model	No.	Model	No.	Model	No.	Model	No.	Model	No.	Model	No.	Model
2001	STL-37	2011	STL-39	2021	STP-100	2031	N400(S)	2041	N511	2051	N61	2061	TPE-8	2071	AA-2E AA-500 AST-220E
2002	STP-4	2012	STL-13	2022	STP-200	2032	N350	2042	STP-6	2052	ARC-10F	2062	N240	2072	TRE-12S
2003	2020N	2013	STL-33	2023	STP-3	2033	N600	2043	TPE-20	2053	ARC-11A,12A	2063	N65	2073	SRP-471E &(R#2)
2004	ARC-2B	2014	STL-34	2024	TPE-10	2034	N800	2044	STP-5	2054	N21, N31	2064	STP-5T	2074(B)	FRS-103E
2005	646N	2015	SRE-30	2025	TRE-45	2035	NP-6	2045	4TR-4	2055	N460C	2065	N466C	2075	N455, N590
2005	N550	2016	SRP-105etc.	2026	N300	2036	TRE-6	2046	N191	2056	N661	2066	N880	2076	N177, 178, 185
2007	1025N	2017	STL-14	2027	N310	2037	J-141W	2047	STP-7	2057	N55	2067	N10	2077	N440
2008	4TR-31N	2018	STL-65	2028	N120S	2038	N-11	2048	N231S	2058	4TR-4U	2068	N45	2078	4TR-55U
2009	N225S	2019	TRE-5	2029	ASP-850A	2039	N510, 512	2049	N130SE	2059	TRE-8N	2069	N710	2079	AST-320E
2019	ARC-1B	2020	SRE-221	2030	ASP-820A	2040	N40, 41	2050	TPE-21	2060	N-51	2070	N41SR	2080	

No.	Model	No.	Model	No.	Model	No.	Model	No.	Model	No.	Model	No.	Model	No.	Model
2081	4TR-3U	2091	ARC-30A, 30B	2101	N760MG, N99U	2111	STC-707C	2121	5007	2131	STP-808A				
2082	N-55T	2092	4TR-55T (N670, N770 4TR-99u, etc.)	2102	SRP-472E	2112	SST-61	2122	L-21M	2132	ARC-41, -42				
2083	SRE-103E	2093	STP-7LA	2103	SRP-469E	2113	FRS-103EHV (K#2)	2123	ARC-10 Series	2133	TRE-666C				
2084	N590F, 4TR-590F	2094	TRE-26C	2104	ARC-10L (BLA-204, 208 BLA-304, 30E)	2114	STP-8 8C	2124	5003	2134	5001				
2085	ARC-40A	2095	STP-7F	2105	AST-140E	2115	SSL-95E	2125	L-311C	2135	SRP-B30E/ 5230				
2086	TRE-12F	2096	N880 (R#2)	2106	ARC-12C, E	2116	MSL-16T	2126	5204	2136					
2087	SRP-467E	2097	N163	2107	CSL-1E	2117	AST-215E	2127	4210, 4220, 4320	2137					
2088	SRP-468E	2098	4TR-6U	2108	MSL-8E	2118	SRC-700U	2128	5305	2138					
2089	ECA-101E	2099	MSL-15E	2109	SST-31	2119	AST-102E No. 200E Series	2129	TRE-12T	2139					
2090	STC-19	2100		2110		2120		2130	5304	2140					