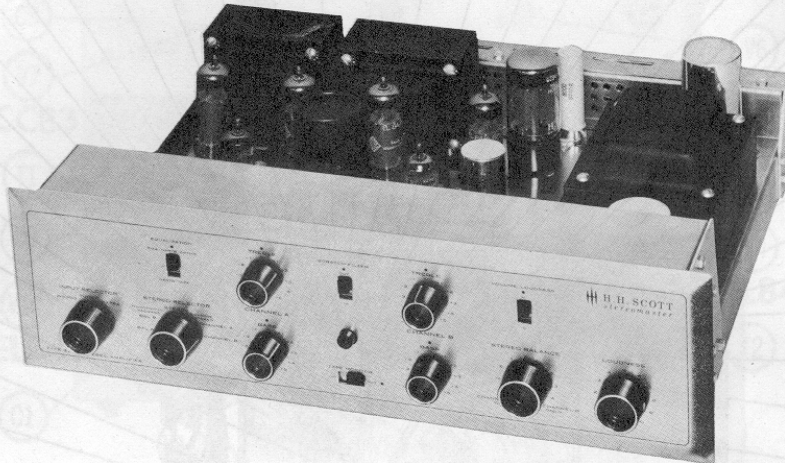


FOLDER 13
SET 555

PHOTOFACT® Folder

H. H. SCOTT
MODEL 222B

H. H. SCOTT
MODEL 222B



H. H. SCOTT
MODEL 222B

TRADE NAME	H. H. Scott Model 222B		
MANUFACTURER	H. H. Scott, Inc., 111 Powder Mill Road, Maynard, Mass.		
TYPE SET	AC Operated 11 Tube Stereo Amplifier		
POWER SUPPLY	105 - 125 Volts AC, 50-60 Cycles	RATING	130 Watts, 1.3 Amp. @ 117 Volts AC

ADJUSTMENTS

BIAS ADJUSTMENT

Connect DC probe of VTVM to point Δ , Common to chassis. Adjust Bias control for 38.5 Volts on VTVM.

DC BALANCE ADJUSTMENT

Connect a 16 Ω 10W resistor across the output terminals of the channel under test. Connect scope across the resistor and turn Horizontal Selector to "LINE". Remove the Phase Inverter tube of the channel under test. Adjust the proper DC Balance control for MINIMUM 120% response on scope. Repeat procedure for other channel.

AC BALANCE ADJUSTMENT

AC Balance may be adjusted by using a distortion or wave analyzer. The AC Balance control is adjusted for MINIMUM second harmonic distortion.

HOWARD W. SAMS & CO., INC. Indianapolis 6, Indiana



The listing of any available replacement part herein does not constitute in any case a recommendation, warranty or guaranty by Howard W. Sams & Co., Inc., as to the quality and suitability of such replacement part. The numbers of these parts have been compiled from information furnished to Howard W. Sams & Co., Inc., by the manufacturers of KV765

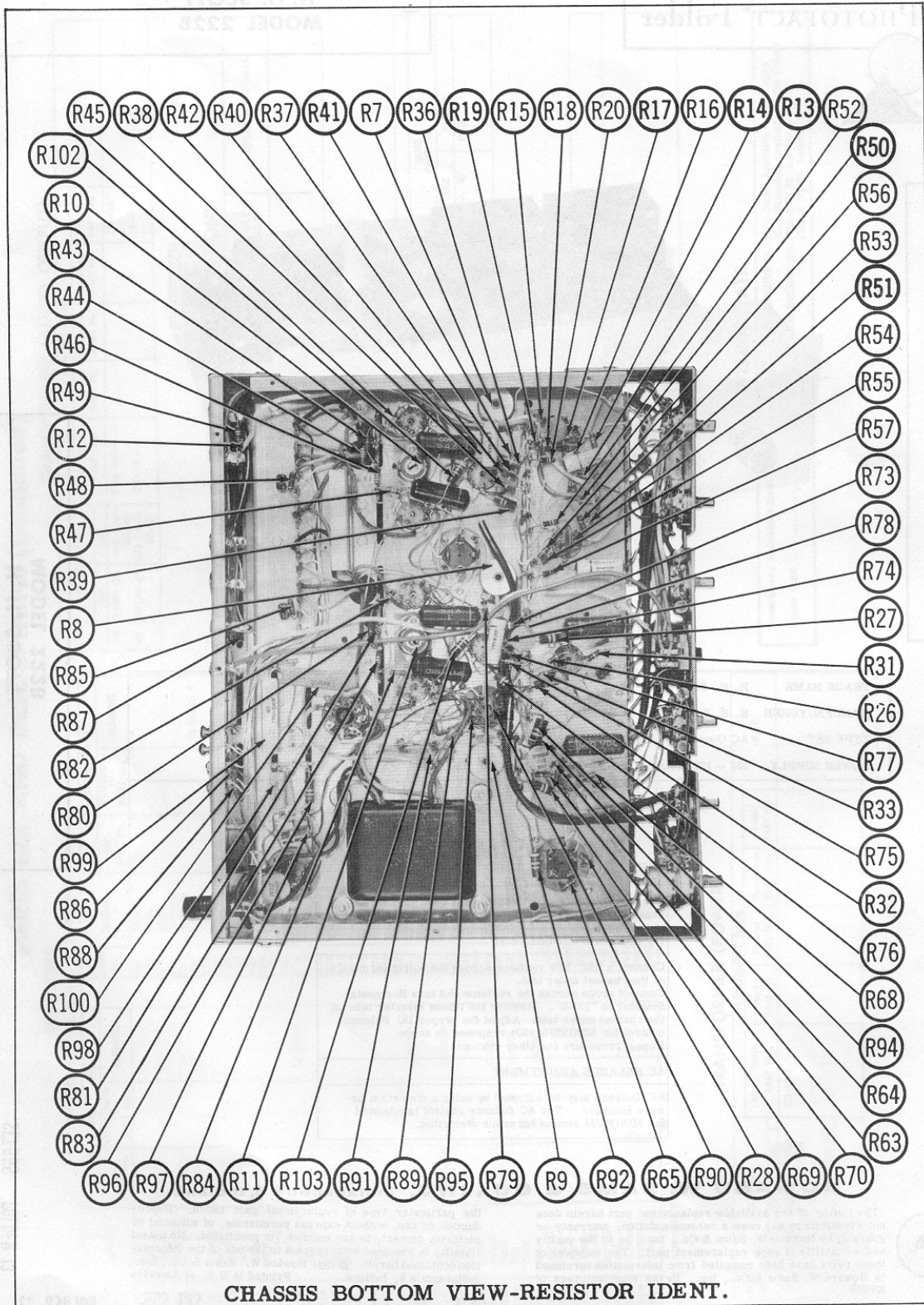
the particular type of replacement part listed. Reproduction or use, without express permission, of editorial or pictorial content, in any manner, is prohibited. No patent liability is assumed with respect to the use of the information contained herein. © 1961 Howard W. Sams & Co., Inc., Indianapolis 6, Indiana. Printed in U.S. of America

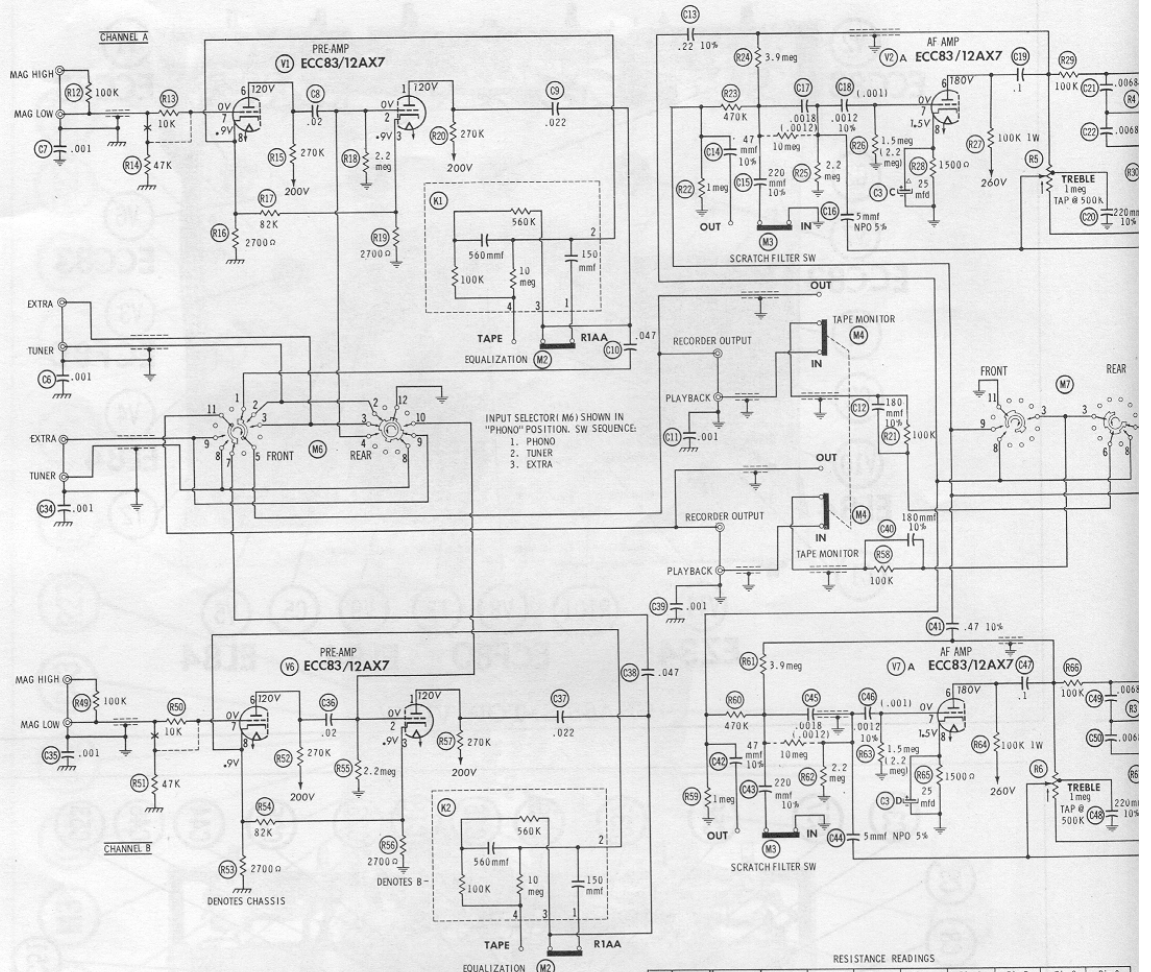
DATE 11 - 61

SET 555

FOLDER 13

SET 555
FOLDER 13





SEE PARTS LIST FOR ALTERNATE VALUE OR APPLICATION

DC COIL RESISTANCE VALUES UNDER ONE OHM NOT SHOWN ON SCHEMATIC DIAGRAM

ARROWS ON CONTROLS INDICATE CLOCKWISE ROTATION (CONTROL VIEWED FROM SHAFT END)

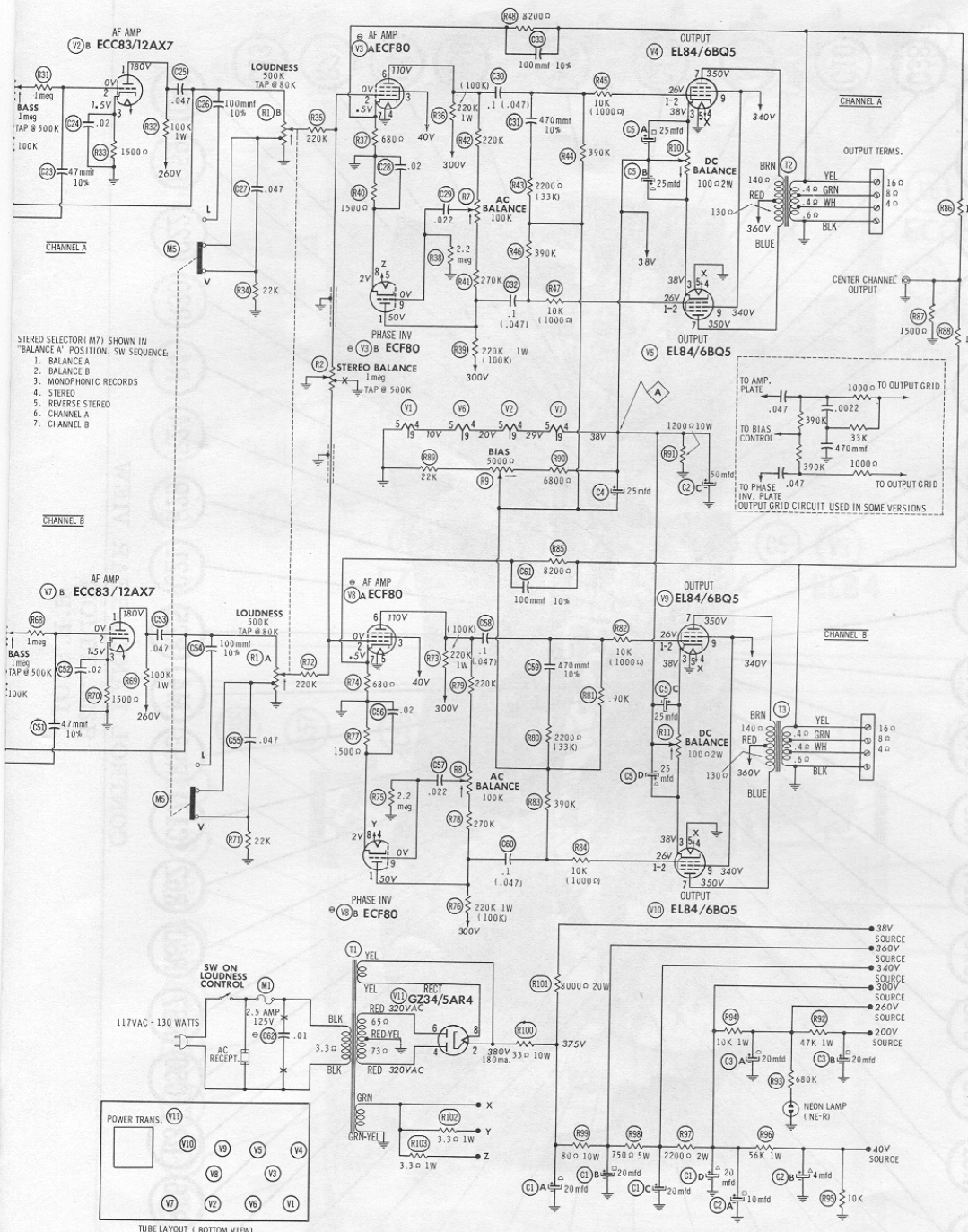
- DC voltage measurements taken with vacuum tube voltmeter; AC voltages measured with 1000 ohm per volt voltmeter.
- Socket connections are shown as bottom views.
- Measured values are from socket pin to common ground.
- Line voltage maintained at 117 volts for voltage readings.
- Nominal tolerance of component values makes possible a variation of ±5% in voltage and resistance readings.
- All controls at minimum, proper output load connected.

A PHOTOFAC STANDARD NOTATION SCHEMATIC
 © Howard W. Sams & Co., Inc. 1961

RESISTANCE READINGS

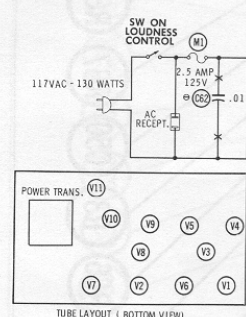
ITEM	TUBE	Pin 1	Pin 2	Pin 3	Pin 4	Pin 5	Pin 6	Pin 7	Pin 8	Pin 9
V1	ECC83 12AX7	1330K	2.2 meg	2700 Ω	17 Ω	0 Ω	1330K	57K	2700 Ω	NC
V2	ECC83 12AX7	1110K	1.6 meg	1500 Ω	52 Ω	35 Ω	1110K	1.5 meg	1500 Ω	NC
V3	ECF80	1220K	160K	115K	FIL	FIL	1220K	680 Ω	1500 Ω	2.2 meg
V4	EL84 6BQ5	NC	400K	120 Ω	FIL	FIL	NC	1250 Ω	NC	1860 Ω
V5	EL84 6BQ5	NC	400K	120 Ω	FIL	FIL	NC	1240 Ω	NC	1860 Ω
V6	ECC83 12AX7	1330K	2.2 meg	2700 Ω	35 Ω	17 Ω	1330K	57K	2700 Ω	NC
V7	ECC83 12AX7	1110K	1.6 meg	1500 Ω	70 Ω	52 Ω	1110K	1.5 meg	1500 Ω	NC
V8	ECF80	1220K	160K	115K	FIL	FIL	1220K	680 Ω	1500 Ω	2.2 meg
V9	EL84 6BQ5	NC	400K	120 Ω	FIL	FIL	NC	1250 Ω	NC	1860 Ω
V10	EL84 6BQ5	NC	400K	120 Ω	FIL	FIL	NC	1240 Ω	NC	1860 Ω
V11	6Z34 5AR5	NC	17000 Ω	NC	73 Ω	NC	65 Ω	NC	NC	97000 Ω

ALL MEASUREMENTS MADE IN "PHONO" AND "BALANCE A" POSITION UNLESS OTHERWISE DESIGNATED.
 † THIS READING WILL VARY DEPENDING UPON THE CONDITION OF THE ELECTROLYTIC IN THE CIRCUIT.
 ■ MEASURED IN "TUNER" OR "EXTRA" POSITION.
 † MEASURED FROM PIN 2 OF V11. NC NO CONNECTION

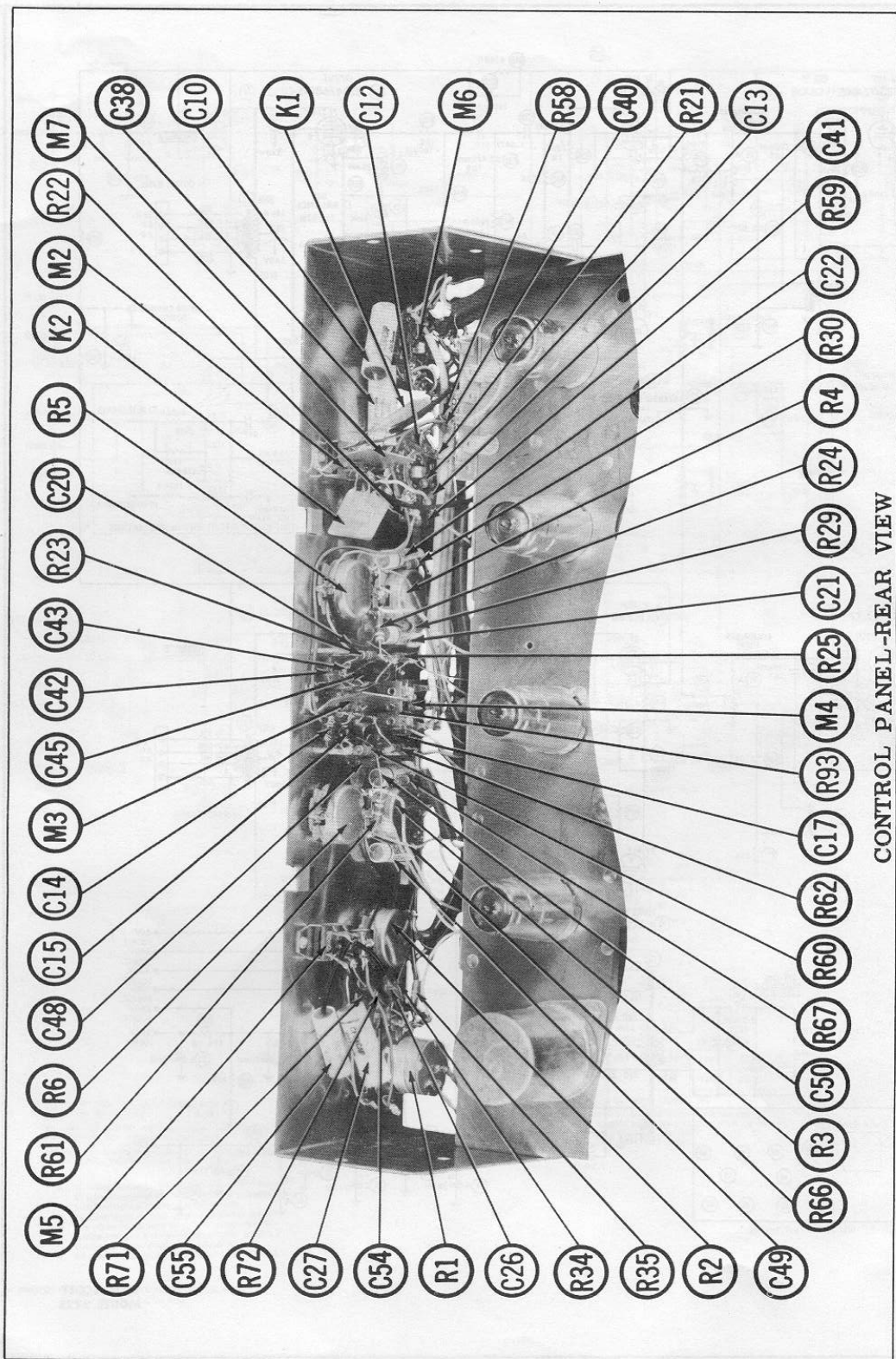


STEREO SELECTOR (M7) SHOWN IN "BALANCE A" POSITION. SW SEQUENCE:

1. BALANCE A
2. BALANCE B
3. MONOPHONIC RECORDS
4. STEREO
5. REVERSE STEREO
6. CHANNEL A
7. CHANNEL B



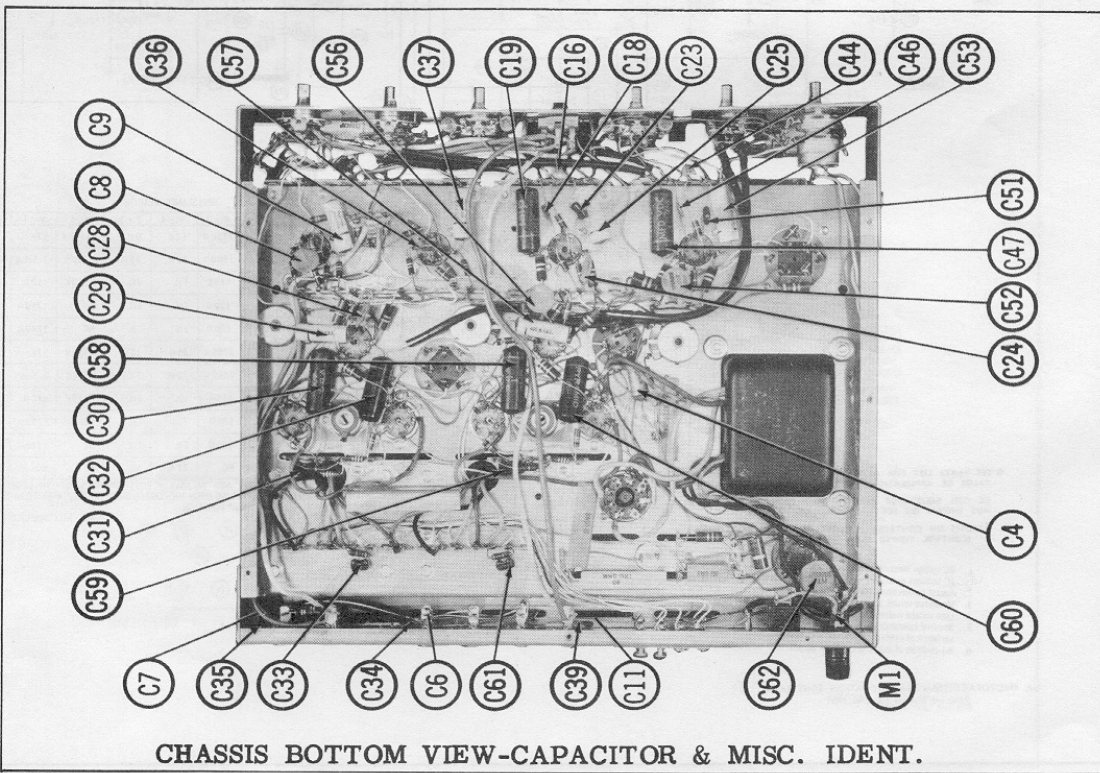
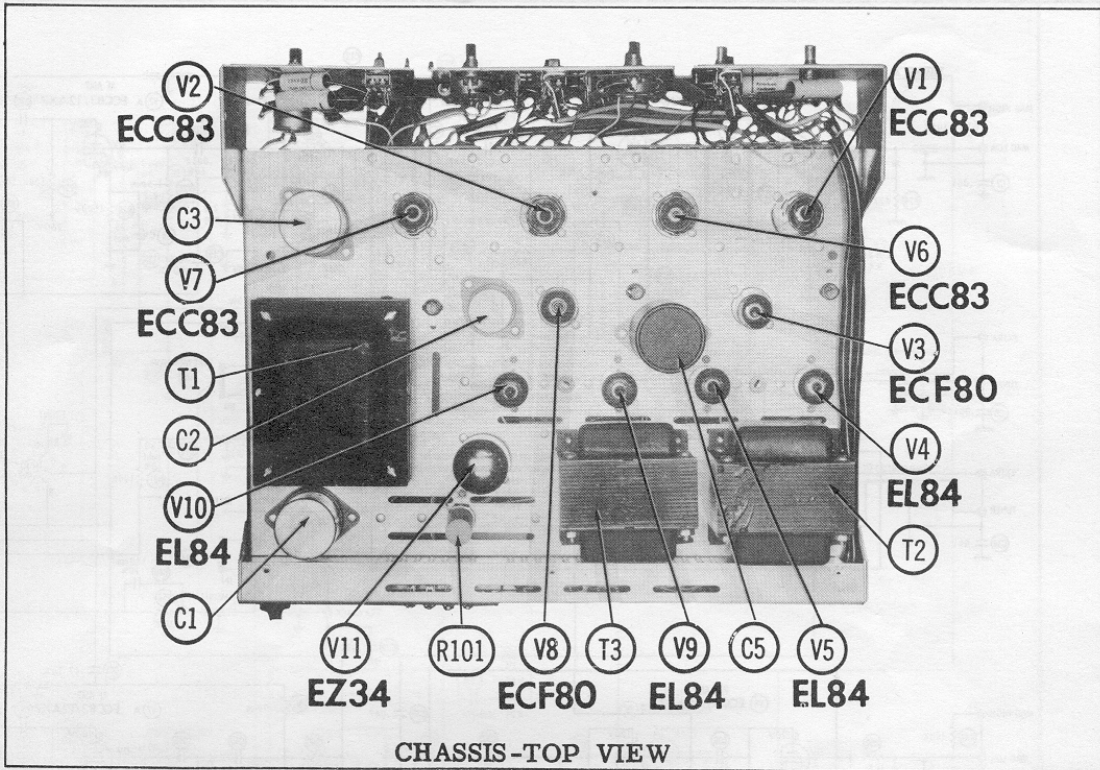
H. H. SCOTT
MODEL 222B



CONTROL PANEL-REAR VIEW

H. H. SCOTT
MODEL 222B

FOLDER 13



PARTS LIST AND DESCRIPTIONS (Continued)

RESISTORS

All wattages 1/2 watt, or less, unless otherwise listed.

ITEM No.	RATING		REPLACEMENT DATA		ITEM No.	RATING	REPLACEMENT DATA		REMARKS
	PRI	SEC	IRC PART No.	WORKMAN TV PART No.			IRC PART No.	WORKMAN TV PART No.	
R12	100K				R58	100K			
R13	10K				R59	10K			
R14	270K				R60	470K			
R15	270K				R61	3.9meg			
R16	2700Ω				R62	2.2meg			
R17	82K				R63	1.5meg			
R18	2.2meg				R64	100K 1W			
R19	2700Ω				R65	500Ω			
R20	100K				R66	100K			
R21	100K				R67	100K			
R22	1meg				R68	1meg			
R23	470K				R69	100K 1W			
R24	3.9meg				R70	1500Ω			
R25	2.2meg				R71	22K			
R26	1.5meg				R72	100K			
R27	1.5meg				R73	220K 1W			
R28	1500Ω				R74	680Ω			
R29	100K				R75	2.2meg			
R30	100K				R76	220K 1W			
R31	1meg				R77	1500Ω			
R32	100K 1W				R78	270K			
R33	2500Ω				R79	220K			
R34	2500Ω				R80	2200Ω			
R35	220K				R81	390K			
R36	220K 1W				R82	10K			
R37	680Ω				R83	390K			
R38	2.2meg				R84	10K			
R39	220K 1W				R85	500Ω			
R40	500Ω				R86	15K			
R41	270K				R87	1500Ω			
R42	220K				R88	15K			
R43	2200Ω				R89	22K			
R44	390K				R90	6800Ω			
R45	10K				R91	2200Ω 1W		PW10-1200	10W-SQ-1200
R46	390K				R92	10K 1W			
R47	10K				R93	680K			
R48	680Ω				R94	10K 1W			
R49	100K				R95	56K 1W			
R50	10K				R96	2200Ω 2W			
R51	47K				R97	7500 5W		PW5-750	5W-SQ-750
R52	270K				R98	300Ω 1W		PW10-30	10W-SQ-30
R53	2700Ω				R99	330 10W		PW10-33	10W-SQ-33
R54	2.2meg				R100	8000Ω 20W		PW20-8000	20W-SQ-8000
R55	2700Ω				R101	3.3Ω 1W			
R56	270K				R102	3.3Ω 1W			
R57	270K				R103	3.3Ω 1W			

* Alternate Value.

TRANSFORMER (AUDIO OUTPUT)

ITEM No.	IMPEDANCE		REPLACEMENT DATA				NOTES
	PRI	SEC	H. H. Scott PART No.	Meritt PART No.	Shonor PART No.	Thorndson PART No.	
T2	7000Ω CT	160 Tap @ 8Ω, 4Ω	TRA-8-4-1			S-24A	
T3	7000Ω CT	160 Tap @ 8Ω, 4Ω	TRA-8-4-1			S-24A	

COMPONENT COMBINATIONS

ITEM No.	USE	DESCRIPTION	H. H. Scott PART No.	REPLACEMENT DATA
K1	Equalization Comp.	150mmf, 500mmf, 100K, 560K, 10meg	PC222E	
K2	Equalization Comp.	220mmf, 560mmf, 100K, 560K, 10meg	PC222E	

FUSES

ITEM No.	TYPE	RATING	REPLACEMENT DATA			
			H. H. Scott PART No.	BUSS PART No.	HOLDER	FUSE
M1		5 EA 125V S/B			342001	MDX 2½ HXP

MISCELLANEOUS

ITEM No.	PART NAME	H. H. Scott PART No.	NOTES
M2	Switch		Equalization (Slide Type DPDT)
M3	Switch		Scratch Filter (Slide Type DPDT)
M4	Switch		Slide Type DPDT
M5	Switch		Yoke-1, 2, 3 (Slide Type DPDT)
M6	Switch		Input Selector (Rotary Wafer)
M7	Switch		Stereo Selector (Rotary Wafer)

TRANSFORMER (POWER)

ITEM No.	RATING		REPLACEMENT DATA				NOTES
	PRI	SEC	H. H. Scott PART No.	Meritt PART No.	Shonor PART No.	Thorndson PART No.	
T1	117V @ 1.3A	640VCT 5V @ 1.9A DC	TR-12-7				
	SEC 3 8.3V @ 8.8A	SEC 4					
		SEC 5					

General-use Unshielded Hook-up Wire Use BELDEN No. 8530 (Solid) Available in Ten Colors
 Power Cord Use BELDEN No. 8524 (Stranded) Available in Ten Colors
 1725-K (7½ FT. Length)