

This is a true copy, cleaned up for reproduction here, of the original typewritten instructions with hand drawn setup diagrams included with the then-new M&K Goliath II subwoofer I purchased back during the Stone Age.

I've added to this a couple of images of the unit I own to assure these instructions are correctly associated with the un-ported, single-driver Goliath II by this manufacturer. The picture of the driver clearly shows the completely fragmented foam to be replaced before this unit goes back into service.

Also note this unit does not have the round "Bottom End" placard in the center of the speaker. Whether it ever did, I simply don't recall.

GOLIATH II INSTRUCTIONS

PRECAUTIONS

Always insure correct polarity when connecting the crossover to your amplifier. The RED terminals are the positive (+) connections and the BLACK terminals are the negative (-) or ground connections.

In case of any difficulty, first check that the connections from the crossover to your amplifier are correct.

For optimum performance, 18 gauge wire is recommended minimum wire size for all connections to the crossover.

CONNECTIONS TO THE BE-1-V INTERNAL CROSSOVER

Connect the left (A) channel output of your amplifier to terminals 1 (+) and 2 (-). Connect the right (B) channel of your amplifier to terminals 4(+) and 3 (-).

Connect your left speaker to terminals 5 (+) and 6 (-). Connect your right speaker to terminals 8 (+) and 7 (-).

SELECTION OF BASS CROSSOVER FREQUENCIES

- A. 125Hz: Place the jumper wire between terminals 9 and 11
- B. 75Hz: Place the jumper wire between terminals 9 and 10
- C. 150Hz: Place the jumper wire between terminals 9 and 10 and place a second jumper wire between terminals 10 and 11. (see note #1)
- D. If you wish your BE-1-V sub-woofer to have a minimum of mid-bass and reproduce only the very lowest part of the audio spectrum, use a jumper wire between terminals 9 & 10 and put a 220 uf capacitor between terminals 5 & 12 to get a 50Hz crossover. Such a capacitor is available from M&K or through your local M&K dealer.

NOTE #1: With some speaker combinations this crossover connection presents a load slightly less than 4 ohms which may activate the protection circuitry in some solid state power amplifiers. If this occurs, the 125Hz or 75Hz connections are recommended.

ADJUSTING FOR ROOM ACOUSTICS

The different crossover frequencies can allow you to adjust for variations in room acoustics. If more mid-bass is desired use a higher crossover frequency. If less mid-bass is desired use a lower crossover frequency.

CORRECT PHASE RELATIONSHIP

Due to variations in room placement, it may be necessary to reverse the relative electrical phase relationship between the Goliath and your main speakers. A simple test for the correct phase relationship is as follows: First, listen to some music or test tones containing information between 50Hz and 100Hz. Then reverse the main speaker wires by reversing the wire at terminal 5 with 6 and by reversing the wire at terminal 7 with 8. If less bass is now produced, the original connections are correct. If more bass is now produced, leave the connections in their reversed condition.

BI-AMPING WITH A SINGLE AMPLIFIER CHANNEL

Place a jumper wire between terminals 9 & 11 and a second jumper between terminals 9 & 10. Place a third jumper wire between terminals 3 & 4. Connect your amplifier output to terminals 1 (+) and 2 (-).

BI-AMPING WITH 2 AMPLIFIER CHANNELS

Place a jumper wire between terminals 9 & 11 and a second jumper between terminals 9 & 10. Connect one amplifier channel to 1 (+) and 2 (-) and the second amplifier channel to 3 (-) and 4 (+).

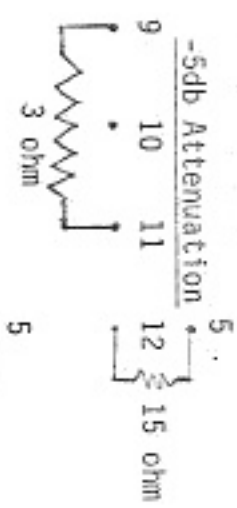
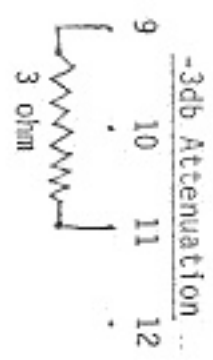
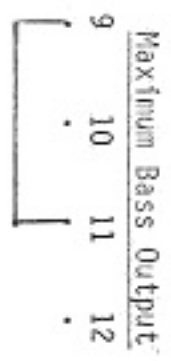
ATTENUATION OF BASS LEVEL

To reduce the amount of bass output from the Goliath by 3db, replace the jumper wire at terminal 9 with a 3 ohm 25 watt resistor. This resistor replaces the jumper wire in all crossover frequency connections. The resistor is available from M&K or through your local M&K dealer.

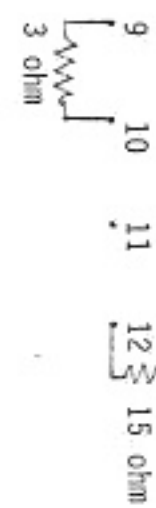
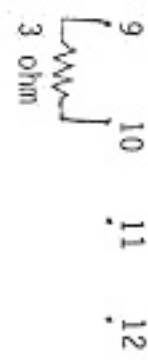
MILLER & KREISEL SOUND CORPORATION
8719 Wilshire Blvd.
Beverly Hills, California 90211
(213) 652-8318

PRELIMINARY INSTRUCTIONS: GOLIATH I & II CROSSOVER & BASS LEVEL ADJUSTMENTS

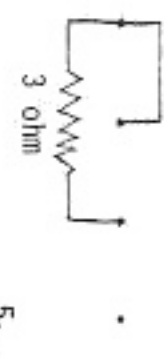
125 Hz



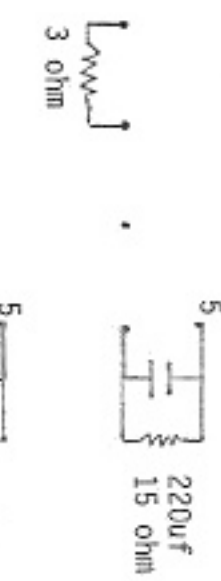
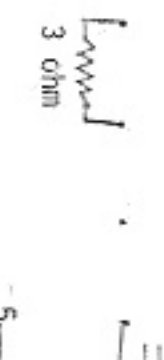
75 Hz



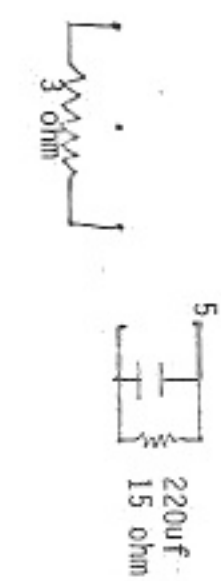
150 Hz



50 Hz



100 Hz





Model No. GOLIATH II

Serial No. 7310254

MILLER & KREISEL SOUND

MODEL
BE-1V

4
3
2
1

RIGHT

AMPLIFIER

LEFT

MILLER & KREISEL
SOUND
CORPORATION

RIGHT

SPEAKERS

LEFT

8
7
6
5

MADE IN USA

CROSSOVER

BOTTOM