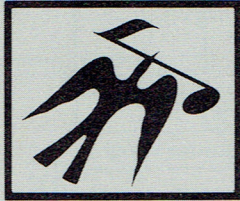


**SERVICE MANUAL**



**FISHER<sup>®</sup>**

**MT-6118**

**Semi Automatic  
Belt Drive Turntable**



*The first name in high fidelity*

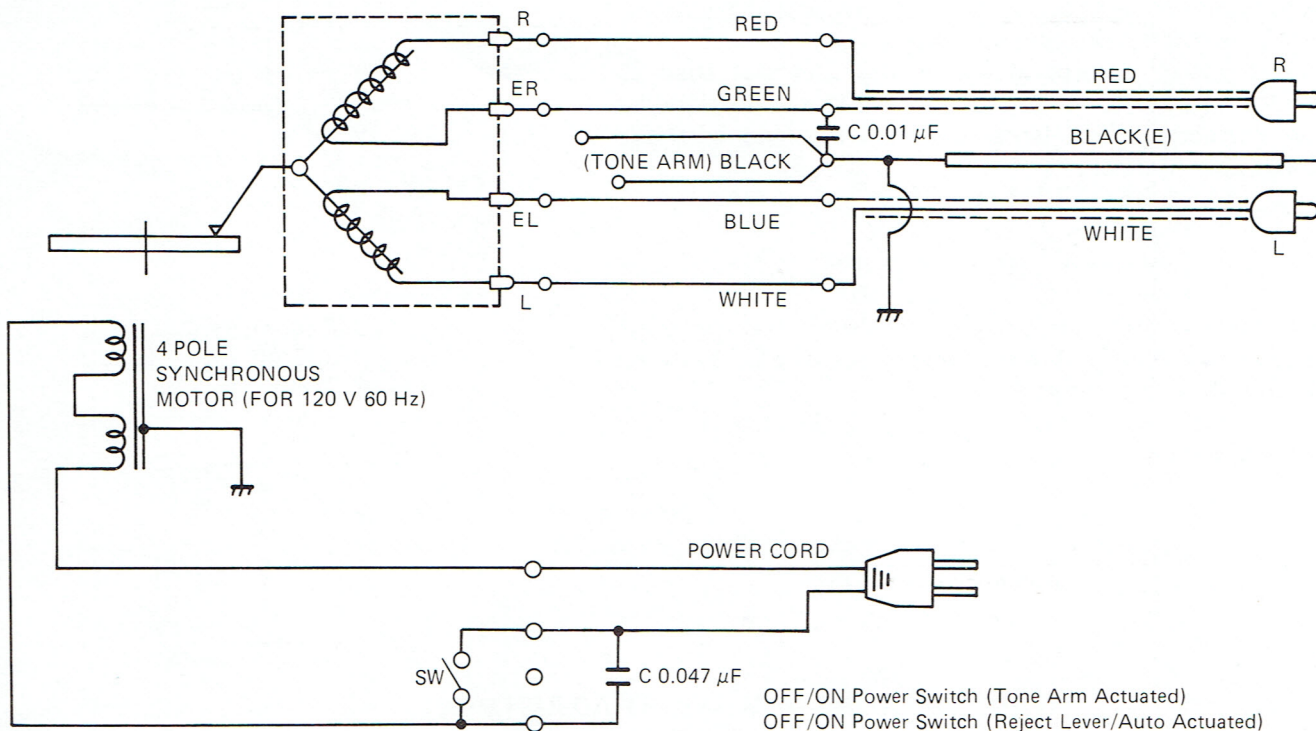
U.S.

# SPECIFICATIONS

TURNTABLE	MT-6118
Motor	4 Pole AC Synchronous
Drive	Belt
Wow and Flutter (WRMS)	0.08 %
Rumble	-55 dB
Speed Variation	±1 %
Tracking Force Range	0.6 - 3.5 grams
Tracking Force Adjustment	Calibrated Counter Weight
Platter Diameter	11"
Platter Weight	1.22 lbs.
Record Speed Selector	33-1/3/45 rpm
Auto Function	
Stop	Yes
Reject	Yes
Automatic	
Tone Arm Return at End of Record	Yes
Manual Function	
Start	Yes
Stop	Yes
Tone Arm Data	
Resonance	<10 Hz
Balance Adjustment	Counter-Weight
Effective Length	193 mm
Shape	Straight
Bearing - Type	
Horizontal	Thrust
Friction Sensitivity	0.15 gram
Vertical	Pivot shaft
Friction Sensitivity	0.3 gram
Max. Tracking Error	±3°
Anti Skate Control	Calibrated Adjustable
Cueing	Viscous Damped
Cartridge Supplied	MG-34 Stereo Magnetic
GENERAL	
Power Requirements	120 V AC ±10% 60 Hz 8 Watts
Dimensions (W x H x D)	17-1/3"x5-1/8"x13-3/4"
Weight (approx.)	9.5 lbs.

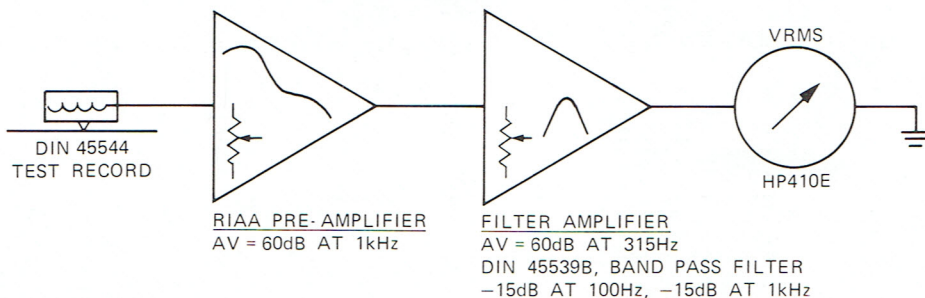
\* Because its products are subject to continuous improvement, Fisher Corporation reserves the right to modify product designs and specifications without notice and without incurring any obligation.

# SCHEMATIC DIAGRAM

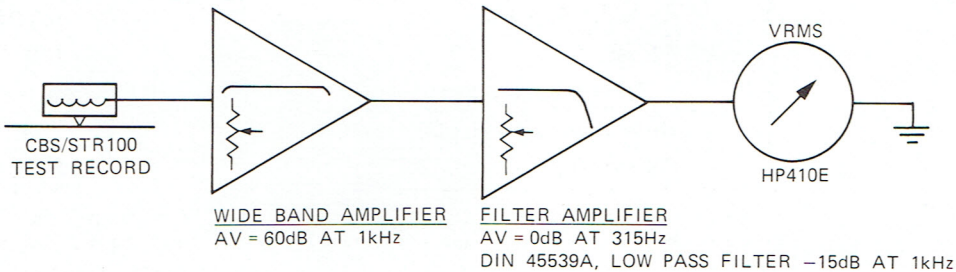


## TURNTABLE MEASUREMENTS

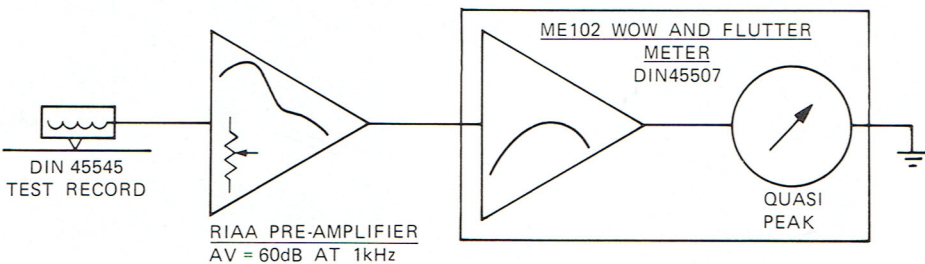
### TURNTABLE RUMBLE WEIGHTED



### TONARM RESONANCE



### WOW AND FLUTTER WEIGHTED



# MOUNTING THE CARTRIDGE

1. Carefully mount cartridge according to maker's instructions. **DO NOT** tighten mounting screws.
2. Connect the 4 colored wires in the cartridge shell to cartridge terminals. It is important that connections be made correctly. That is, colors of wires and cartridge terminals be matched.

White	=	Left output
Blue	=	Left ground
Red	=	Right output
Green	=	Right ground

3. Move the tone arm over the turntable shaft and move the cartridge back and forth to obtain a space of  $5/8''$  between turntable shaft and stylus tip (Fig. 1). Fix cartridge in this location by **TIGHTENING** the mounting screws.

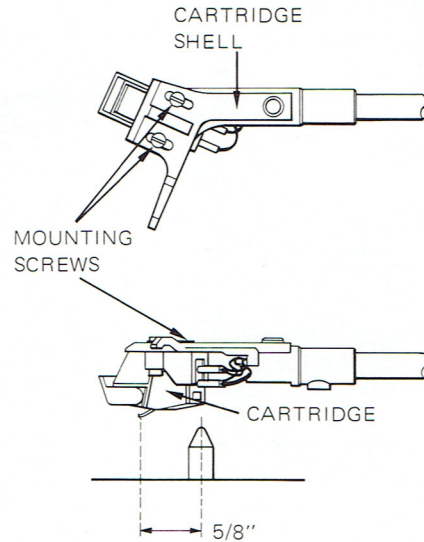


Fig. 1

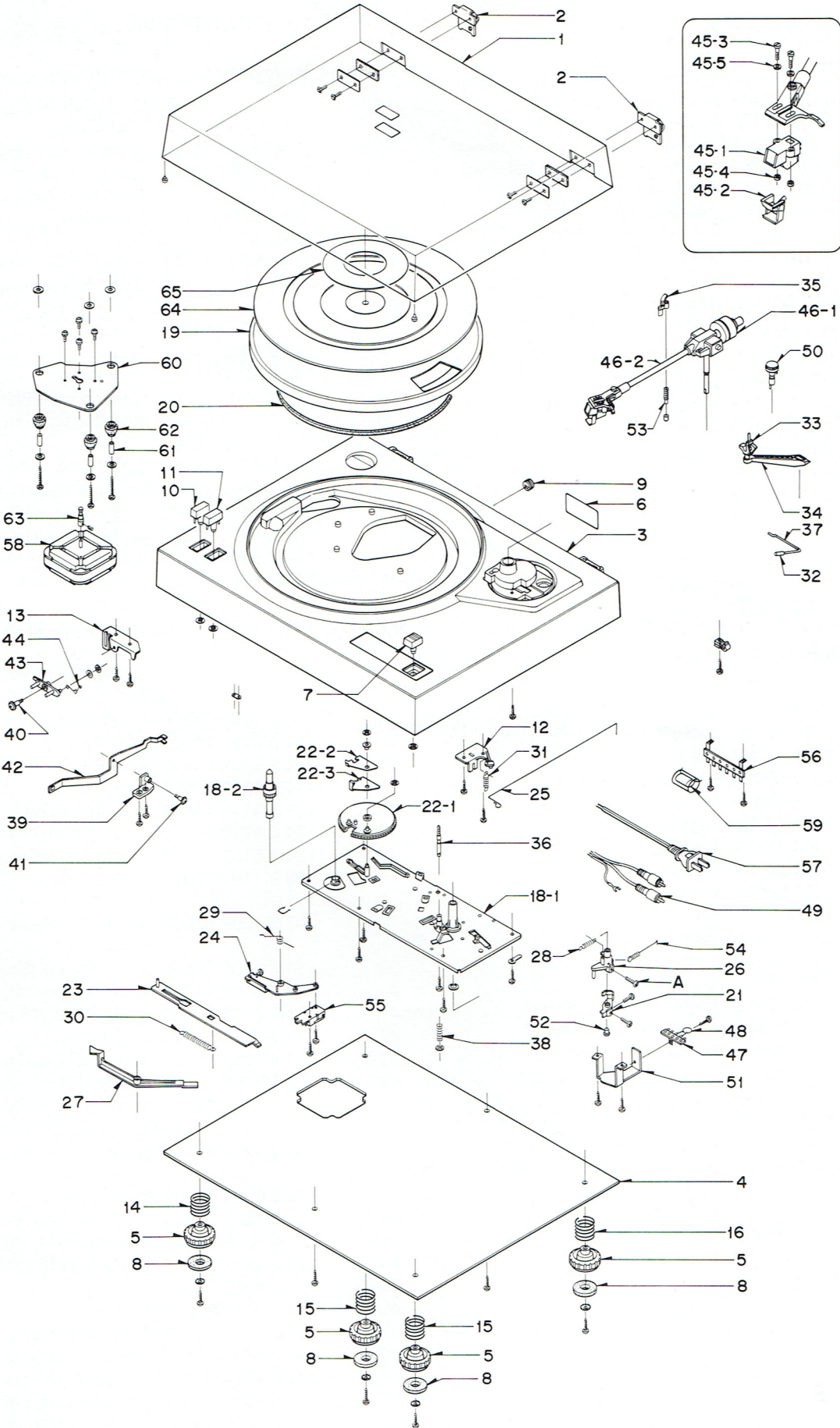
## TONE ARM HEIGHT ADJUSTMENT

Loosen the tone arm height adjusting screw (36) and adjust the height by sliding the support arm (53) and secure the screw.

## TONE ARM LIFT POSITION ADJUSTMENT (Return point)

Turn screw (A) clockwise to move outwards, and counterclockwise to move inwards.

# EXPLODED VIEW OF CABINET & TURNTABLE



# PARTS LIST

## PACKING PARTS LIST

Ref. No.	Parts Number	Description
	131 6 1139 72808	Box Corrugate-EXP
	131 6 2119 01720	Bag Polyethylene-EXP (Lid)
	131 6 2119 02061	Bag Polyethylene-EXP (Cabinet)
	131 6 2519 01300	Bag Polyethylene Ind. (Weight)
	131 6 3009 26971	Pad (Front)
	131 6 3009 26981	Pad (Rear)

## ACCESSORIES PARTS LIST

Ref. No.	Parts Number	Description
	131 6 2719 10801	Bag Fan
	131 6 4119 70212	Explanatory Booklet
	131 6 4159 34100	Notes
	131 6 4319 10802	Service Station List
	131 6 4519 14400	Guarantee Card
	131 6 4939 00200	Information Card
	134 2 2901 10700	Adapter EP

## CABINET PARTS LIST

Ref. No.	Parts Number	Description
1	131 0 2022 90221	Lid Assy
	131 2 1107 20901	Lid
	131 2 1310 22106	Name Plate
	131 2 2904 12300	Pad Lid
2	131 0 2002 15000	Hinge Assy
3	131 2 1101 39404	Cabinet
4	131 2 1105 22100	Plate Bottom
5	131 0 1003 38516	Leg Assy
6	131 2 1310 30251	Name Plate
7	131 2 1601 53301	Knob
8	131 2 5203 23600	Felt
9	131 2 6111 21300	Bushing (SR-4P-4)
10	134 2 1601 17700	Knob (33)
11	134 2 1601 17701	Knob (45)
12	134 2 2403 20300	Angle Mount (Rejector)
13	134 2 2403 20400	Angle Mount (Speed)
14	134 2 5102 13900	Spring Mounting
15	134 2 5102 13901	Spring Mounting
16	134 2 5102 13902	Spring Mounting
*	131 2 4201 19505	Screw (Screw, Button Head Tapping B-TITE 3) 5 - 4
*	131 2 4201 19502	Screw (Screw, Button Head Tapping B-TIPE 3) 4 - 2, 12 - 2, 13 - 2
*	101 3 1504 01002	Screw, Truss Head 4.0x10 2 - 4

## TURNTABLE PARTS LIST

Ref. No.	Parts Number	Description
18	134 0 6001 13200	Unit Plate Assy
18-1	134 2 2101 13100	Unit Plate
18-2	134 2 6107 11100	Spindle Turntable
*	131 2 4201 19502	Screw (Screw, Button Head Tapping B-TIPE 3) 18 - 6
19	134 2 6101 11500	Turntable
20	134 2 6302 10900	Belt
21	134 0 6022 11300	Plate PU Fix Assy
22	134 0 6030 11301	Gear Cycling Assy
22-1	134 2 4110 11100	Gear Cycling
22-2	134 2 4122 11800	Trip
22-3	134 2 4122 12000	Trip
23	134 0 6035 11400	Arm Return Assy
24	134 2 4108 17700	Plate (Switch Plate)
25	134 2 4112 00400	Rod (Rejector Rod)
26	134 2 4120 16100	Lever
27	134 2 4123 14800	Arm (Return Arm)
28	134 2 5101 20500	Spring (Plate PU Fix Spring)
29	134 2 5101 26400	Spring (Switch Plate Spring)
30	134 2 5101 29500	Spring (Arm Return Spring)
31	134 2 5101 30500	Spring (Reject Rod Spring)
*	101 3 1103 00603	Screw, Pan Head 3.0x6 21 - 2
*A	101 3 1103 01602	Screw, Pan Head 3.0x16 26 - 1
*	101 3 1103 01402	Screw, Pan Head 3.0x14 24 - 1
32	134 2 1601 16200	Knob (Cueing Lever)
33	134 0 6031 12201	Arm Rest Assy
34	134 2 3301 14400	Arm Rest
35	134 2 3310 12500	Support Arm
36	134 2 4116 11800	Spindle Lifting
37	134 2 4120 17700	Lever (Cueing Lever)
38	134 2 5101 24700	Spring (Spindle Lifting)
*	108 3 1102 00000	Ring E 2.0 36 - 1
*	102 3 1202 60601	Screw, Pan Head Tapping 2.6x6 33 - 1
39	134 2 2403 19600	Angle Mount (Fork Mount)
40	134 2 4106 21800	Shaft (Return Arm Shaft)
41	134 2 4106 22200	Shaft (Fork Mount Shaft)
42	134 2 4123 17700	Arm (Fork)
43	134 2 4123 18500	Arm (Return Arm)
44	134 2 5101 29600	Spring (Selector Spring)
*	131 2 4201 19502	Screw (Screw, Button Head Tapping B-TIPE 3) 39 - 2
*	131 2 4203 83200	Washer, Plain 3.2x8x0.5 40 - 1
45	134 0 4009 02400	Pick-up Assy
45-1	4 1579 27020	Cartridge (MG-34)
45-2	4 1579 29440	Pick-up Stylus (ST-34D)
45-3	134 2 4201 11315	Screw 2.6x10
45-4	134 2 4202 11301	Nut
45-5	134 2 4203 01800	Washer
46	134 0 4001 10200	Tone Arm Assy
46-1	134 0 4003 03100	Pick-up Weight Assy
46-2	134 0 4004 04700	Pick-up Arm Assy
47	4 2372 00270	Terminal Lug 1-4PT
48	C1HYDZ103A	Ceramic 0.01 $\mu$ F 50V +80,-20%

# PARTS LIST (Continued)

## TURNTABLE PARTS LIST

Ref. No.	Parts Number	Description
49	131 0 4004 14402	Wire Shield Assy
50	134 2 1601 17800	Knob (IFC)
51	134 2 2403 19700	Angle Mount (PU Thrust)
52	134 2 4117 10600	Support Shaft (PU Shaft Thrust)
53	134 2 4201 12800	Screw
54	134 2 5101 33000	Spring
*	102 3 2203 00601	Screw, Button Head Tapping 3.0x6 51 - 2, 47 - 1
55	4 2319 21995	Switch Micro
56	4 2379 20423	Terminal Lug 2-4P
57	4 2439 20720	Line Cord
58	4 5282 00010	Synchronous Motor
59	C2JNRM4730	Polypropylene 0.047 $\mu$ F 630V
60	134 2 4108 23500	Plate
61	134 2 4208 14400	Spacer (Rubber Cushion)
62	134 2 5202 11500	Rubber Cushion
63	134 2 6401 13001	Pulley Motor (60 Hz)
*	131 2 4201 19507	Screw (Screw, Button Head Tapping B-TITE 3) 62 - 3

Ref. No.	Parts Number	Description
*	131 2 4201 19505	Screw (Screw, Button Head Tapping B-TITE 3) 55 - 2
*	131 2 4201 19900	Screw (SEMS 3x6) 58 - 4
*	131 2 4201 14101	Screw (SEMS 3x10) 56 - 2
*	131 2 4203 17200	Washer 62 - 3
64	134 2 6102 15001	Mat Turntable
65	134 2 6103 11400	Decorate Plate T.T.

NOTE: \* Asterisk indicates not a service part. The numbers for screws, nuts, and washers, shown in Description, correspond with Ref. Nos. of the parts using these screws, nuts and washers.

**Example:** 3 - 2

3 means	<b>Ref. No.</b>
2 means	<b>Q'ty.</b>

## MEMO



**FISHER<sup>®</sup>**

THE FIRST NAME IN HIGH FIDELITY

*Studio-Standard*

FISHER CORPORATION, 21314 LASSEN STREET • CHATSWORTH • CALIFORNIA 91311

PRINTED IN JAPAN '81/Nov. WM-6878