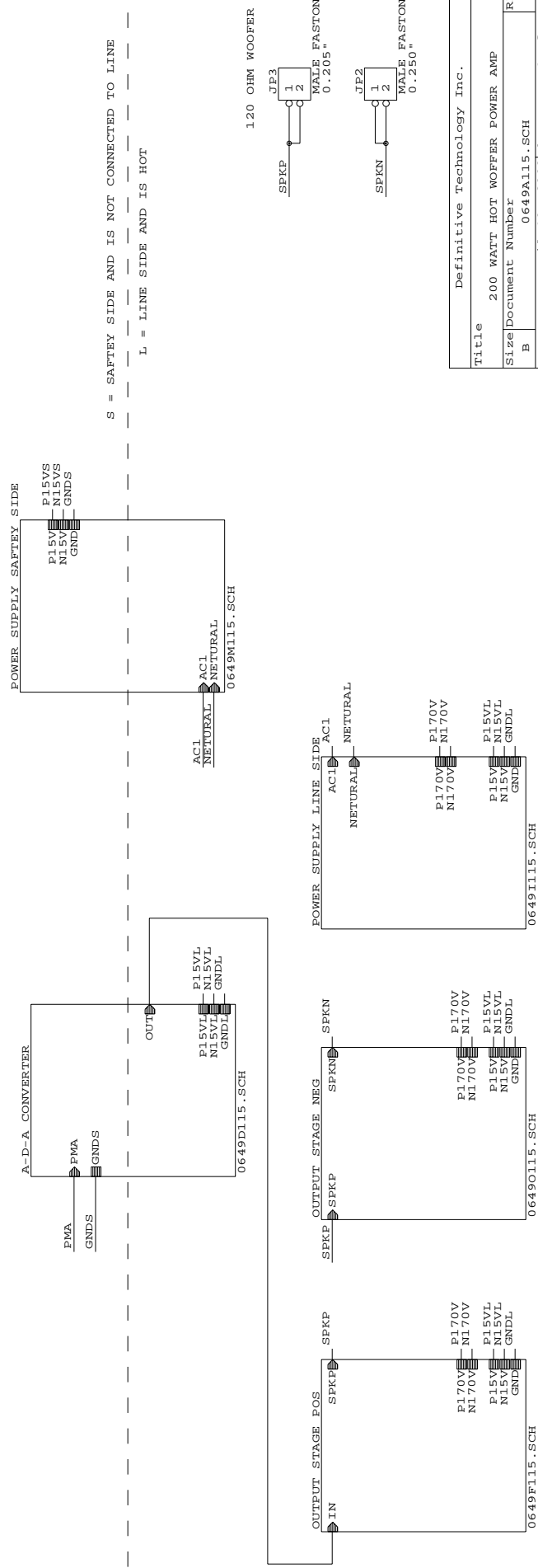
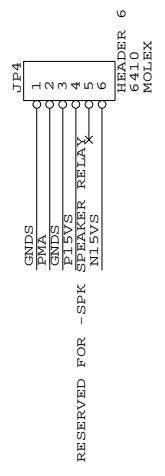
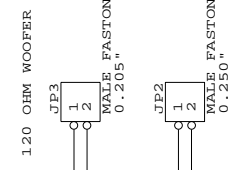


REV. HISTORY
0649K115.SCH

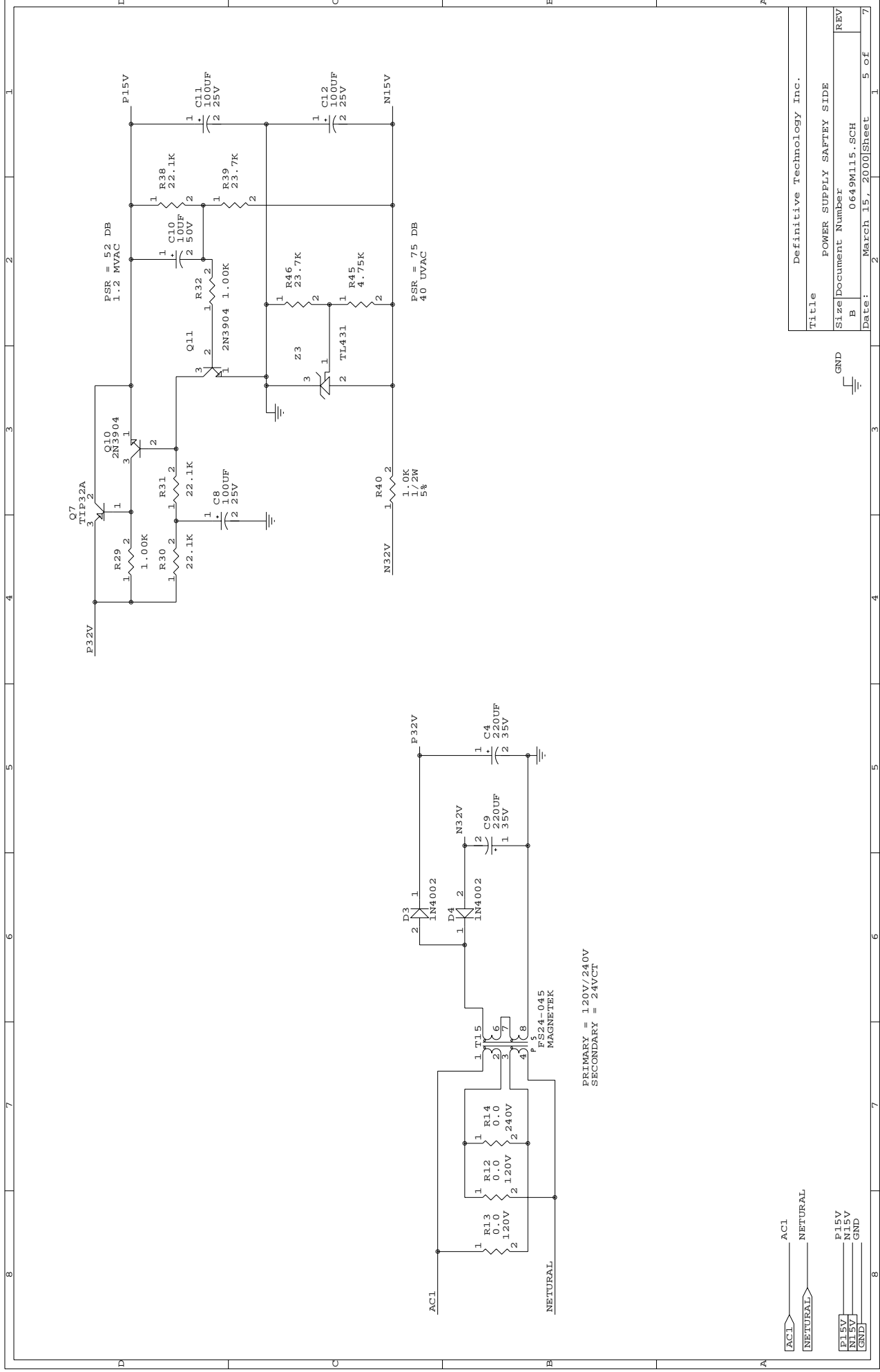
- M1 MOUNTING HOLE
4-40 UNPLATED
- M2 MOUNTING HOLE
4-40 UNPLATED
- M3 MOUNTING HOLE
4-40 UNPLATED
- M4 MOUNTING HOLE
4-40 UNPLATED
- M5 MOUNTING HOLE
4-40 UNPLATED
- M6 MOUNTING HOLE
4-40 UNPLATED
- M7 MOUNTING HOLE
4-40 UNPLATED
- M8 MOUNTING HOLE
4-40 UNPLATED



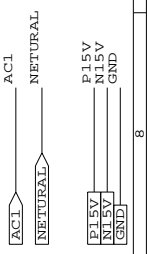
S = SAFTEY SIDE AND IS NOT CONNECTED TO LINE
L = LINE SIDE AND IS HOT



| | |
|----------------------------|-------------------------------|
| Definitive Technology Inc. | |
| Title | 200 WATT HOT WOOFER POWER AMP |
| Size | Document Number |
| B | 0649A115.SCH |
| REV | |
| Date: | April 19, 2000 |
| Sheet | 1 of 7 |

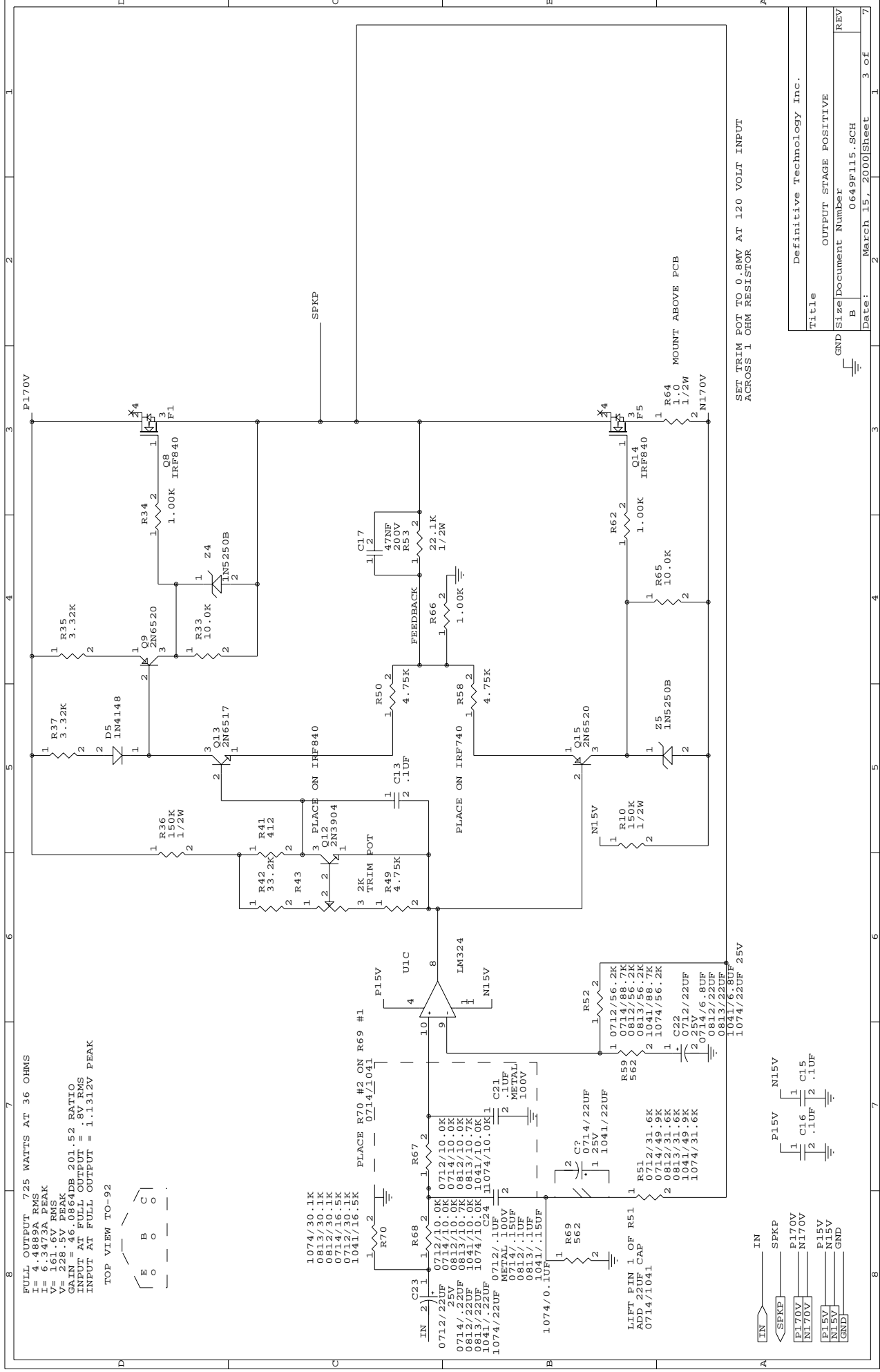


PRIMARY = 120V/240V
SECONDARY = 24VCT

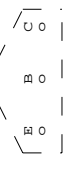


| | | |
|-----------------|----------------|----------------------------|
| Title | | Definitive Technology Inc. |
| Size | | POWER SUPPLY SAFTEY SIDE |
| Document Number | | 0649M115.SCH |
| Date: | March 15, 2000 | Sheet 5 of 7 |





FULL OUTPUT 725 WATTS AT 36 OHMS
 RMS = 4.66A
 I = 6.3473A PEAK
 V = 161.6V RMS
 V = 228.5V PEAK
 GAIN = 46.0864DB 201.52 RATIO
 INPUT AT FULL OUTPUT = 1.8V RMS
 INPUT AT FULL OUTPUT = 1.1312V PEAK
 TOP VIEW TO-92



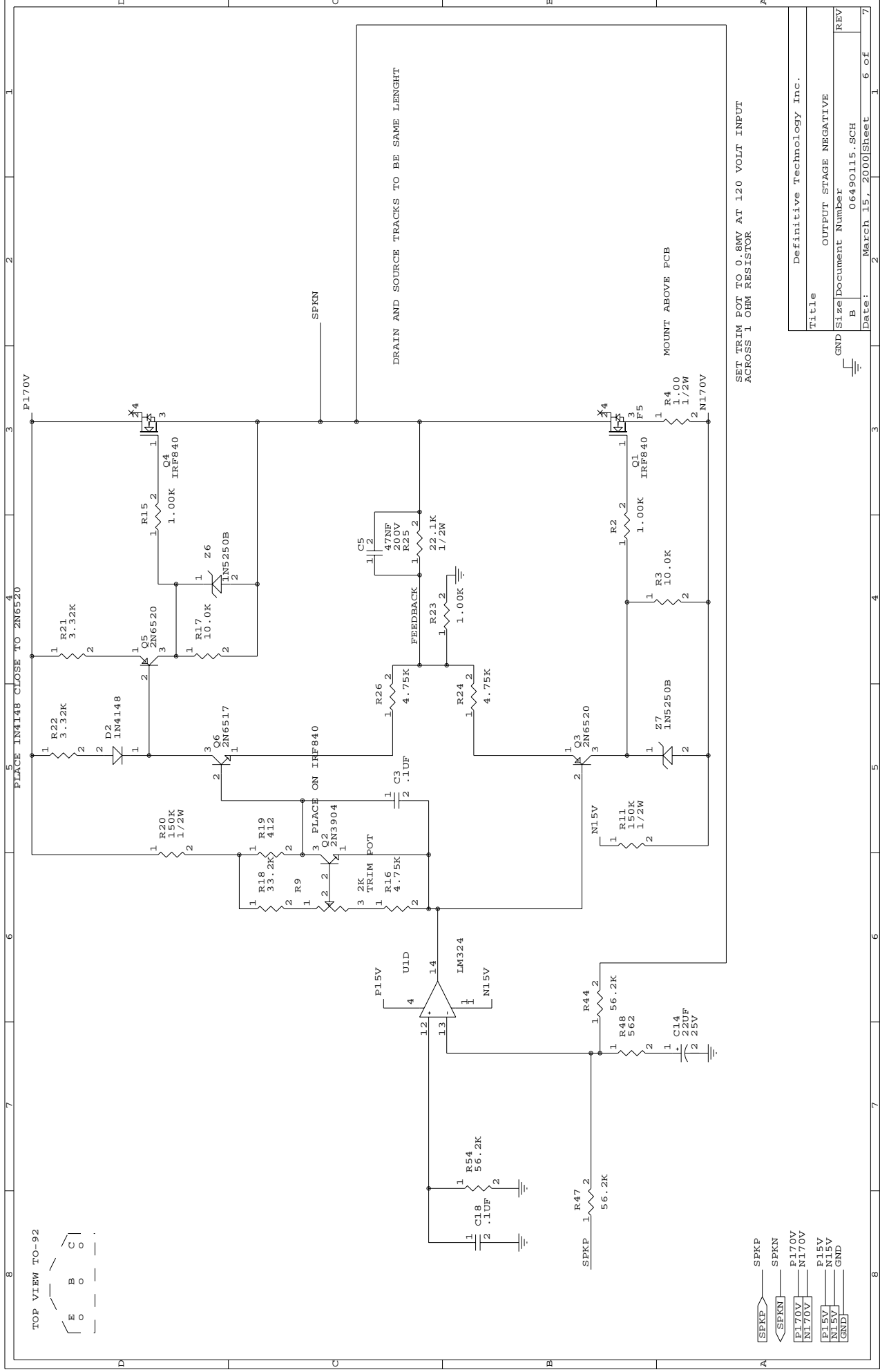
SET TRIM POT TO 0.8MV AT 120 VOLT INPUT
 ACROSS 1 OHM RESISTOR

R64 MOUNT ABOVE PCB
 1 1/2W

| | | |
|-----------------------|-----------------|----------------------------|
| Title | | Definitive Technology Inc. |
| Output Stage Positive | | |
| B | Document Number | 0649F115.SCH |
| Date: | | March 15, 2000 |
| Sheet | | 3 of 7 |



GND



TOP VIEW TO-92



SET TRIM POT TO 0.8MV AT 120 VOLT INPUT
ACROSS 1 OHM RESISTOR

DRAIN AND SOURCE TRACKS TO BE SAME LENGTH

MOUNT ABOVE PCB

- [SPKP] SPKP
- [SPKN] SPKN
- [P170V] P170V
- [N170V] N170V
- [P15V] P15V
- [N15V] N15V
- [GND] GND

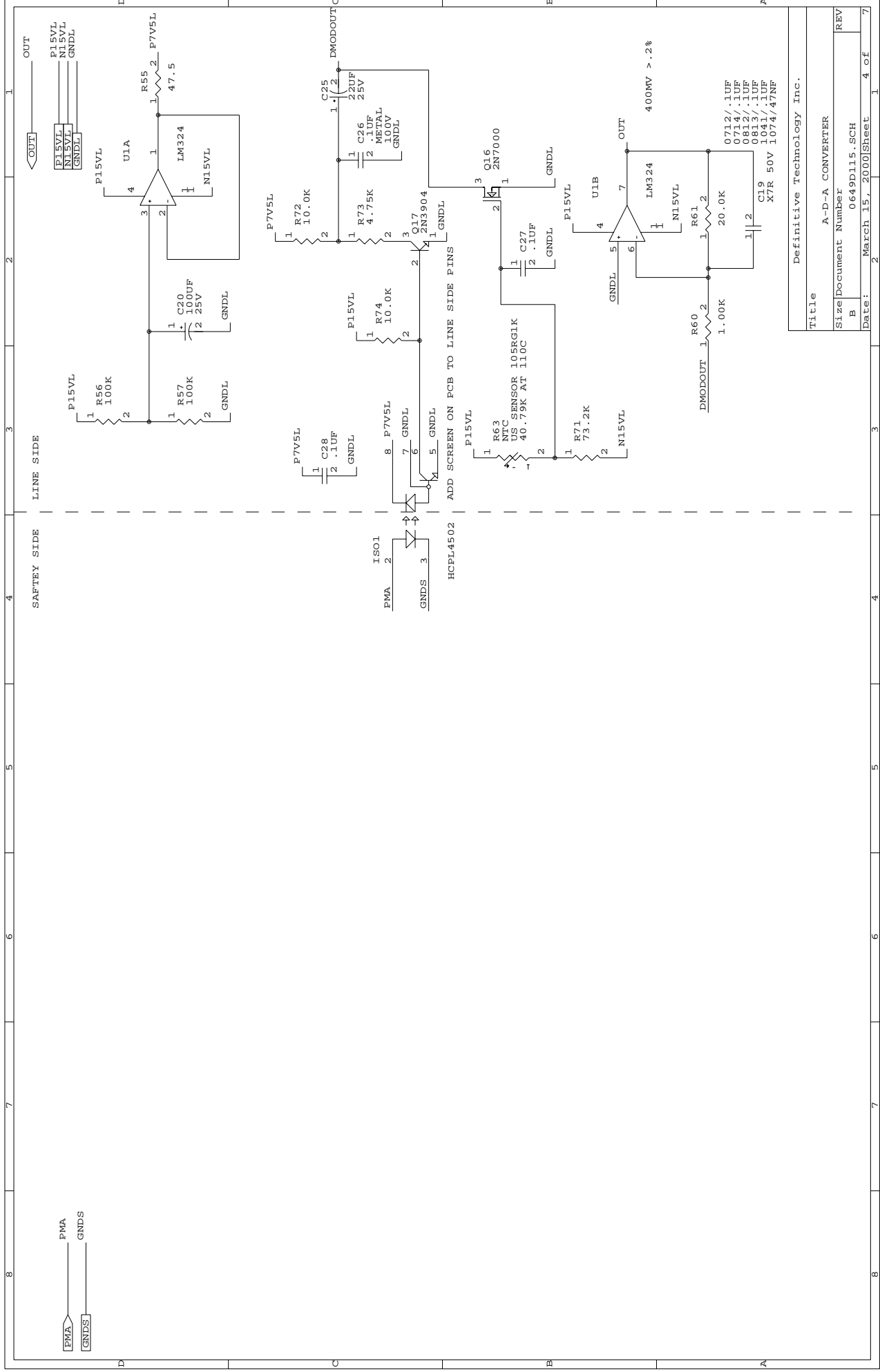
Title
Definitive Technology Inc.

Output Stage Negative

Document Number
06490115.SCH

Date: March 15, 2000 Sheet 6 of 7





| | |
|-----------------|-----------------|
| Title | |
| A-D-A CONVERTER | |
| Size | Document Number |
| B | 0649D115.SCH |
| Date: | March 15, 2000 |
| Sheet | 4 of 7 |

Definitive Technology Inc.

