

New Product
Information

DCM Introduces the Latest in "Time Window"[®] Technology

with our new Time Window 1A

The DCM Time Window 1A is a new improved version of the original Time Window, combining advanced acoustic technology and contemporary styling.

New "Time Window Technology" has resulted in improved tonal accuracy over a larger listening area, a more open soundstage, and even better pinpoint sound image resolution. This technology combines advanced driver design with acoustic lenses and Electronic Correction Circuitry (ECC). Together they improve the sound radiation pattern of the entire speaker in addition to enhancing the frequency response and time coherence.

DCM's new 3/4 inch dome tweeters (two per speaker) are cooled by a special low-viscosity ferro-fluid for increased power handling capability. The tweeters with the acoustic lenses provide excellent horizontal and vertical sound distribution.

The enclosure is accented with solid oak and the grille is acoustically transparent dark brown fabric. These improvements dramatically enhance the classic Time Window design.

With axial sensitivity of 91 dB @ 2.8 volts at one meter (1 kHz) these speakers perform splendidly with the newest low power, high quality electronics. In addition, their high power handling capability allows for outstanding dynamic range.

Listen Through It,
Not To It.

The Time Window 1A by DCM

Physical and Technical Data

Dimensions:

36" h x 15" w x 11-3/4" d
(91.4 cm x 37.5 cm x 29.8 cm)

Weight:

32 lbs. (14.5 kg) net
40 lbs. (18.1 kg) shipping weight

Efficiency:

91 dB/1 watt/1 meter

Recommended amplifier power:

10 to 200 watts per channel

Maximum power handling:

50 watts RMS pink noise continuous
200 watts peak program

Impedance:

8 ohms nominal

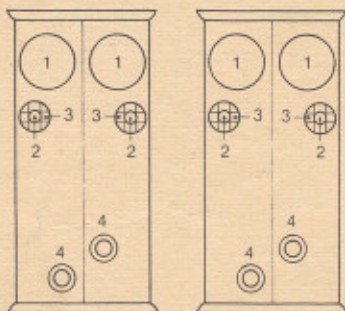
Frequency range:

30 Hz-20 kHz

Input connector:

Dual banana plug (furnished)

Driver complement:



The diagram above shows placement of:

- [1] 6.5" (16.5 cm) low/mid-frequency drivers
- [2] .75" (1.9 cm) soft plastic dome tweeter
- [3] Acoustic anti-diffraction lens
- [4] Tuned ports

Drivers [1] employ rubber surrounds which provide superior transient response and damping and much longer useful life than foam surrounds. Vented Kapton voice-coil formers are used for higher power handling and increased efficiency. The tweeters [2] are matched by a spectrum analyzer to within ± 1 dB at the expected off-axis listening angle for the best stereo imaging of both speakers used as a stereo pair. Phase equalization in the dividing network produces accurate impulse response (time coherence) at the expected listening height (36"/91 cm) throughout a 180° horizontal arc. The acoustic lens [3] improves high-frequency smoothness on-axis and balances off-axis frequency response.

Enclosure type:

Hybrid transmission line

System resonance:

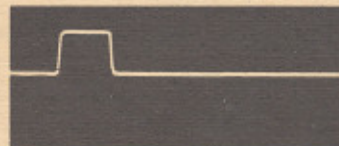
30 Hz

Impulse response:

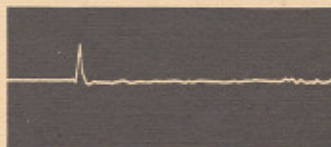
A loudspeaker's ability to accurately reproduce an impulse is a most important criterion of performance. The well defined impulse reproduction of the Time Window 1A means excellent clarity, imaging and detail in the sound.*



One-tenth millisecond (.0001 sec.) impulse output of power amplifier.



One millisecond (.001 sec.) impulse output of power amplifier.



DCM Time Window 1A impulse response, one-tenth millisecond.



DCM Time Window 1A impulse response, one millisecond.

*Compare the phase coherence and accuracy of the Time Window 1A with that of other fine loudspeakers. See the results of impulse tests on several excellent speakers in our DCM Time Window® publication.

DCM Corporation

670 Airport Blvd. • Ann Arbor, Michigan 48104 U.S.A. • 313-994-8481

The Time Window 1A Loudspeaker is made in U.S.A. • U.S. Patent No. 4,315,102 issued, other U.S. and foreign patents pending.

©1984 DCM Corporation