

REF NO.	CRAIG KEY NO.	DESCRIPTIONS	MFR'S SUGG RET. PRICE
CABINET & CHASSIS			
A1	5506010	Front Escutcheon	23.10
A2	5506050	Wood Cabinet	25.90
A3	5506051	Back Panel	9.35
A4	5504330	Bushing, Cabinet Holder	.25
A5	---	Screw PH M4x18 , Cabinet	.25
A6	5506077	Dial Scale	6.15
A7	5506070	Dial Window	11.70
A8	5506011	Trim Panel, Front Escutcheon	1.85
A9	5506012	Trim Index Panel, Push Sw Cont	3.20
A10	5506081	Dial Pointer	1.60
A11	5506380	Plate, Dial Scale	.60
A12	NSP	Plate, Serial No.	--
A13	5506026	Push Knob, SPKR/FILTER/MUT/HI-B	3.95
A14	5506420	Guide, Push Knob	.60
A15	5504026	Knob, TUNING	3.05
A16	5504028	Knob, FUNCTION/TREBLE/BASS	2.90
A17	5506027	Knob, VOLUME	3.40
A18	5506341	Sw Lever, Tone/Mode/Loud/Tape	.40
A19	5506028	Knob, TONE/MODE/LOUD/TAPE	2.20
A20	5504800	Rubber Foot	.25
A21	NSP	Cover, Tuning Knob	--
A22	5506052	Top Metal Screen	9.75
A23	5506800	Antenna Cap	.25
A24	5506381	Bracket, AM Antenna	.25
A25	5504212	Screw, Ground Terminal	.50
A26	5506431	Bushing w/Nut, Ground Terminal	.50
B1	NSP	Chassis, Front	--
B2	NSP	Chassis, Joint (A)	--
B3	NSP	Chassis, Joint (B)	--
B4	NSP	Chassis, Joint (C)	--
B5	NSP	Bracket, Power Transformer	--
B6	5506421	Guide, Dial Pointer	4.40
B7	5506266	Base, Pointer	.75
B8	NSP	Tape, Pointer	--
B9	3307079	Bushing, AC Cord	.30
B10	5506805	HEAT SINK	25.00
B11	NSP	Bracket, Heat Sink	--
B12	5506395	Bkt(A), Pulley	1.55
B13	5506396	Bkt(B), Pulley	.30
B14	5506086	Light Reflector, Escutcheon	9.75
B15	5506382	Bkt, Spkr Sw Mtg	.70
B16	5506383	Bkt, Filter Sw Mtg	1.10
B17	5506205	Ass'y, FLYWHEEL w/Tuning Shaft	8.40
B18	5504311	Pulley(A), Dial String	.30
B19	5504214	Screw, Pulley	.25
B20	5506801	Dial Drum	.75
B21	5504270	Spr, Dial Drum	.25
B22	5506212	Control Shaft	2.30
B23	5504369	Coupling, Control Shaft	.30
B24	NSP	Bkt, Tuner PCB Mtg (L)	--
B25	NSP	Bkt, Tuner PCB Mtg (R)	--
B26	5504385	Bushing, LED Mtg	.25
B27	5506384	Bkt, RCA Jack Mtg	1.00
B28	NSP	Rivet, Serial No.	--
B29	5506385	Bkt, LED Mtg	.60
B30	5506386	Bkt, Meter Mtg	2.65
B31	5504312	Pulley(B), Dial String	.25
B32	5504231	Spacer, Control Shaft	.25
B33	NSP	Clamp, Antenna Wire	--
B34	NSP	Clamp, Lead wire	--
B35	5506053	Bottom Lid	10.05
B36	NSP	Cover, Dial Pointer Guide	--
B37	5506232	Spacer, Lever Sw	.25
B38	NSP	Heat Sink	--
B39	NSP	Bkt, Sw PCB Mtg	--
B40	NSP	Plastic Guide, Tuner PCB Mtg	--
B41	NSP	Spacer, Escutcheon	--
B42	NSP	Cover, Escutcheon	--
B43	NSP	Bkt, Tuner Mtg	--
B44	5506231	Stud, Tuner Mtg	.25
B45	NSP	Insulator, Tuner Stud	--
B46	NSP	Heat Sink	--
B47	5506802	Veil, Push Sw Cover	.25
B48	NSP	Bkt, Muting PCB Mtg	--
1	5506516	Ass'y, POWER SUPPLY PCB w/comp	27.90
2	5506522	Ass'y, AMP & PROTECTOR PCB w/comp	103.95
3	5506518	Ass'y, TUNER PCB w/comp	90.50
4	5506519	Ass'y, PRE-AMP PCB w/comp	31.95
5	5506521	Ass'y, FILTER PCB w/comp	22.95
6	5506520	Ass'y, CONTROL PCB w/comp	44.95
7	5506517	Ass'y, SPKR SELECTOR PCB w/comp	9.05
8	5506523	PCB, TAPE DUBBING/MONITOR	2.00
9	5506524	Ass'y, LED INDICATOR PCB w/comp	8.95
10	5504520	Ass'y, MUTING CONT PCB w/comp	8.95
11	5504631	Ass'y, 4 P Speaker Conn	4.20
12	5506608	Ass'y, 7 P RCA Input Conn	8.95
13	5504633	Ass'y, 4 P Antenna Terminals	2.30
14	5504608	AC Outlet	1.35
15	NSP	Clamp, AC Outlet	--
15	5504386	Fuse Holder	2.85
16	5504632	Lug, 1L2P	.25
17	5506531	Slide Sw, DE-EMPHASIS	1.60

REF NO.	CRAIG KEY NO.	DESCRIPTIONS	MFR'S SUGG RET. PRICE
18	3307099	AC Cord	2.80
19	5506513	AM Antenna Bar	9.70
20	5506530	Sw, POWER ON/OFF	5.35
21	5506607	Headphone Jack	2.30
22	5506603	Meter, SIGNAL Level	9.20
23	5506604	Meter, FM Tuning	9.20
24	5506605	Meter, OUTPUT POWER(L)	9.20
25	5506606	Meter, OUTPUT POWER(R)	9.20
26	5506508	AC POWER TRANSFORMER	46.50
27	NSP	Insulator, Transistor	--
28	5506550	Lamp, Dial Scale	2.45
29	5506430	Cushion, Dial Lamp	.35
30	5506525	PCB, Transistor Conn	.25
33	5504390	Holder, Fuse (Clamp Type)	.25
34	NSP	Shield, Tuner	--
MISCELLANEOUS ELECTRICAL			
SW1	5506533	Rotary Sw, FUNCTION	7.45
SW101	5506534	Lever Sw, DUBBING	3.30
SW102		Lever Sw, MONITOR	
SW201	5506535	Lever Sw, MODE	2.65
SW202		Lever Sw, LOUDNESS	
SW203	5506536	Lever Sw, TURN OVER (BASS)	3.30
SW204	5506537	Lever Sw, TURN OVER (TREBLE)	2.90
SW251-1		Push Sw, LOW FILTER	
SW251-2		Push Sw, HIGH FILTER	
SW251-3	5506538	Push Sw, MUTING	7.65
SW251-4		Push Sw, HI-BLEND	
SW601	5506530	Lever Sw, POWER ON/OFF	5.35
SW602	5506532	Push Sw, SPEAKER A/B	5.30
SW603	5506531	Slide Sw, DE-EMPHASIS	1.60
J101	5506608	Ass'y, 7P RCA Jack Plate	8.95
J501,502	5504631	Ass'y, 4P Spkr Terminal	4.20
J601	5506607	Headphone Jack	2.30
J602,603	5504608	AC Outlet	1.35
F601	5504386	Fuse Holder	2.85
XFU003		Fuse, 3A/250V	.85
F602	5504390	Fuse Holder (Clamp Type)	.25
XFU001		Fuse, 1A/250V	.85
L601~606	AR3137D	LED, FUNCTION Indicator	1.15
PL601~3	5506550	Lamp, Dial Scale	2.45
M601	5506603	METER, SIGNAL Strength	9.20
M602	5506604	METER, FM Tuning	9.20
M603	5506605	METER, Output Power (L)	9.20
M604	5506606	METER, Output Power (R)	9.20
RY501	5506598	RELAY	8.50
T601	5506508	AC POWER TRANSFORMER	46.50
VR201,202	5506570	VR-100k, VOLUME Cont	5.35
VR203	5506571	VR-250k, BALANCE Cont	2.30
VR204,205	5506572	VR-100k, BASS Cont	4.30
VR206,207	5506573	VR-50k, TREBLE Cont	4.30
VR1	5506590	Semi-Var-Res 50k	.75
VR2	5506591	Semi-Var-Res 5k	.75
VR3	5506592	Semi-Var-Res 20k	.75
VR501,502	5506593	Semi-Var-Res 500 ohms	.75
VR503,504	5506594	Semi-Var-Res 200 ohms	.75
VR601,602	T281027	Semi-Var-Res 10k	.75
	3307099	AC Cord	2.80
	5504706	Ferrite Bead	.25
	5504632	Lug, 1L2P	.25
	5504633	4P Antenna Terminals	2.30
	5504212	Screw, Ground Terminal	.50
	5506431	Bushing w/Nut, Ground Terminal	.50
COILS, TRIMMERS & TRANSF			
L1	5504670	FM Ant Coil	1.75
L2,3	5506670	FM RF Coil	1.75
L4,6,7	5504672	Choke Coil 2.2uH	.75
L5	5504673	FM OSC Coil	1.35
L8	5506675	Choke Coil 2.2uH	.25
L9	5504675	Choke Coil 3.9uH	.85
L10	H500044	AM OSC Coil	1.05
L11	5506671	Choke Coil 18uH	.85
L12,13	5506672	Filter Block	5.00
L501,502	5506674	Choke Coil	1.00
L601	5504682	Balun Coil	1.20
L602	5506513	AM Antenna Bar	9.70
T1	5504643	FM IFT	1.50
T2	5506641	AM IFT	1.05
T3	5506642	FM IFT	1.40
T4	5506643	FM IFT	1.40
T5	5506644	AM IFT	1.25
T601	5506508	POWER TRANSFORMER	46.50
RY501	5506598	RELAY	8.50
TC1	5506673	Trimmer Capacitor 6pF	1.20
TC6	5504680	Trimmer Capacitor 8pF	.80
CF1	5506676	Ceramic Filter SFE10.7ML	1.85
CF2,3	5506677	Ceramic Filter SFE10.7MA	1.85
CF4	5506678	Ceramic Filter 455kHz	1.00
VC1	5506602	Variable Capacitors(TUNER)	15.30
NSP : None Serviceable Part.			

REF NO.	CRAIG KEY NO.	DESCRIPTION	MFR'S SUGG RET. PRICE
---------	---------------	-------------	-----------------------

SEMICONDUCTORS

IC1	HA11211	IC, FM/IF	8.95
IC2	uPC1173C	IC, FM/MPX	7.25
IC101,102	uPC1024H	IC, PRE-AMP	3.00
IC501	FS7812C	IC, Power Supply	7.45
Q201,202,251, 252,205~208	2SC1345	Transistor	1.55
Q203,204	2SA836	"	1.20
Q501~506	2SC1775	"	1.05
Q507,508	2SA915	"	1.05
Q509,510	2SC1940	"	1.75
Q511,512	2SD261	"	1.90
Q513,514	2SD415	"	1.80
Q515,516	2SB549	"	2.00
Q517,518	2SD745	"	7.45
Q519,520	2SB705	"	7.85
Q521,522,524, 525,526	2SC1344	"	1.50
Q523,527	2SA844	"	1.50
Q528	2SA673A	"	1.85
Q529	2SC1449	"	1.50
Q611,612,613	2SC458	"	1.85
Q1	3SK45	FET	3.30
Q2	2SC535	Transistor	3.80
Q3	2SC461	Transistor	1.80
Q4,7,8	2SC460	Transistor	3.80
Q5	2SK55	FET	1.80
Q6	2SC458	Transistor	1.85
Q9,10	2SA836	Transistor	1.20
D1,2,6	1S2076	Diode	.65
D3,4,5	1N60	Diode	.95
D501,502	KB262	Diode	.65
D503~506	1S2076	Diode	.65
D507~512	SR1K2	Diode	.65
D513	RD39EB1	Zener Diode	.75
D601~604	M4C41C	Bridged Diode	6.60
D605~610	1N60	Diode (or 1K261)	.95
L601~606	AR3137D	LED, Function Ind	1.15

CAPACITORS

TUNER PCB			
VC1 @	Variable Caps (TUNER)		
C1,8	Ceramic	13pF	
C2,10,21	"	100pF	
C3,4,5,6,12	"	0.01uF	
C7,15,18	"	15pF	
C9	"	5pF	
C11	"	3pF	
C13,14,19,20,25,27,33,34, 39,40,43,45,47,48,58,60, 64,71	"	0.04uF	
C16	"	10pF	
C17	"	30pF	
C22	"	22pF	
C23,44	Electrolytic	10uF	16V
C24,66,59	Ceramic	470pF	
C26	"	0.02uF	
C28	Polyester	350pF	
C29	Ceramic	7pF	
C30,56	Polyester	0.01uF	
C31	Ceramic	56pF	
C32,55	"	0.001uF	
C52,63	Electrolytic	4.7uF	16V
C49,53	"	1uF	35V
C54,68	"	3.3uF	16V
C41	"	220uF	6.3V
C42	"	6.8uF	25V
C46	"	100uF	16V
C51	"	6.8uF	16V
C57	Polyester	0.0047uF	
C61	Electrolytic	0.1uF	16V
C65	Polyester	0.047uF	
C67	Polystyrene	470pF	
C69	Electrolytic	1.5uF	16V
C70	"	0.22uF	16V
C72	"	220uF	16V
C73,74	Polyester	0.0027uF	
C75,76	"	0.0056uF	
C77,78	"	0.0012uF	
C79,80	Electrolytic	0.47uF	16V

PRE-AMP PCB			
C101,102	Electrolytic	2.2uF	35V
C103,104	Ceramic	56pF	
C105,106	Electrolytic	100uF	6.3V
C107,108	Ceramic	470pF	

REF NO.	DESCRIPTION
---------	-------------

C109,110	Polyester 0.015uF
C111,112	" 0.0043uF
C113,114	Electrolytic 1uF 35V
C115	" 47uF 50V
C116	Ceramic 0.04uF
C117	Electrolytic 10uF 16V

CONTROL PCB

C201,202	Ceramic 390pF
C203,204	Polyester 0.1uF
C205,206	Electrolytic 0.47uF 35V
C207,208	" 4.7uF 35V
C209,210,213,214	Polyester 0.022uF
C211,212,215,216	" 0.033uF
C217,218	" 0.0018uF
C219,220	" 0.003uF
C221,222	Electrolytic 0.1uF 35V
C223,224	Ceramic 39pF
C225,226	Electrolytic 4.7uF 35V
C227	" 100uF 50V
C229,230	" 470pF

FILTER PCB

C251,252	Polyester 0.039uF
C253,254	" 0.033uF
C255,256	Ceramic 120pF
C257,258	Polyester 0.0027uF
C259,260	" 0.0015uF
C261,262	Electrolytic 0.1uF 35V
C263,264	" 1uF 35V
C265	Polyester 0.0033uF

AMP PCB

C501,502	Electrolytic 0.47uF 35V
C503,504,505,506	Ceramic 470pF
C507,508,522,523,530,537	Electrolytic 100uF 16V
C509,510	Ceramic 33pF
C511,512,513,514	" 10pF
C515,516	Electrolytic 4.7uF 16V
C517,518,519,520,521	Ceramic 0.04uF
C525,526	Electrolytic 1uF 25V
C528	" 4.7uF 50V
C529	Ceramic 0.001uF
C531	Electrolytic 1uF 35V
C532	Polyester 0.047uF
C533	Electrolytic 470uF 63V
C534,535	" 47uF 35V
C536	" 10uF 50V
C538,539	Ceramic 470pF

POWER SUPPLY PCB & MUTING PCB

C609	Mylar 0.01uF 125V
C601,602,603,604	Polyester 0.047uF 100V
C605,606	Electrolytic 820uF 50V
C607,608	" 10uF 25V
C611,612	" 10uF 16V

@ See CHOKES, COILS & TRIMMERS

RESISTORS 25¢ each

TUNER PCB			
R1,21	Carbon	1M ohms	1/2W
R2,39,69,70,72	"	100k	"
R3,34	"	150k	"
R4,5,40,60	"	22	"
R6	"	27k	"
R7,32,61,62	"	3.3k	"
R8,29,51,52,59	"	1k	"
R9,11	"	100	"
R10	"	47	"
R12,38	"	2.2k	"
R13,16,46	"	6.8k	"
R14,17,43,57	"	10k	"
R15,67,68	"	680	"
R18,31,33	"	470	"
R19,20,35	"	330	"
R22,55,56	"	4.7k	"
R23,30	"	220	"
R25	"	15k	"
R26	"	18k	"
R27,50	"	39k	"
R28	"	8.2k	"
R36,37,49	"	33k	"
R41	"	6.2k	"
R42	"	1.8k	"
R44	"	270	"
R45	"	47k	"

REF NO.	DESCRIPTION
R47	Carbon 68k ohms $\frac{1}{2}W$
R48	" 43k " "
R53	" 270k " "
R54	" 2.7k " "
R58	" 16k " "
R63, 64	" 5.6k " "
R65, 66	" 2.4k " "
R71	" 560 " "

PRE-AMP PCB	
R101, 102, 105, 106, 121	Carbon 100k ohms $\frac{1}{2}W$
R103, 104, 119, 120	" 1k " "
R107, 108	" 390 " "
R109, 110	" 1M " $\frac{1}{2}W$
R111, 112	" 200k " $\frac{1}{2}W$
R113, 114	" 18k " "
R115, 116	" 47k " "
R117	FUSE Res. 100 " "
R118	Solid Res. 470 " $\frac{1}{2}W$

CONTROL PCB	
R201, 202, 203, 204, 207, 208	Carbon 4.7k ohms $\frac{1}{2}W$
R205, 206, 237, 238	" 470k " "
R209, 210, 217, 218, 235, 236	" 1.5k " "
R211, 212	" 3.3M " $\frac{1}{2}W$
R213, 214	" 560k " $\frac{1}{2}W$
R215, 216	" 1.2M " "
R219, 220	" 220 " "
R221, 222, 227, 228, 247, 248	" 10k " "
R223, 224, 225, 226	" 12k " "
R229, 230	" 3.3k " "
R231, 232, 233, 234	" 1.2k " "
R239, 240	" 20k " "
R421, 242	" 1k " "
R243, 244	" 4.7k " "
R245, 246	" 390 " "
R249	FUSE Res. 100 " "
R281, 282, 283, 284	Carbon 1M " "

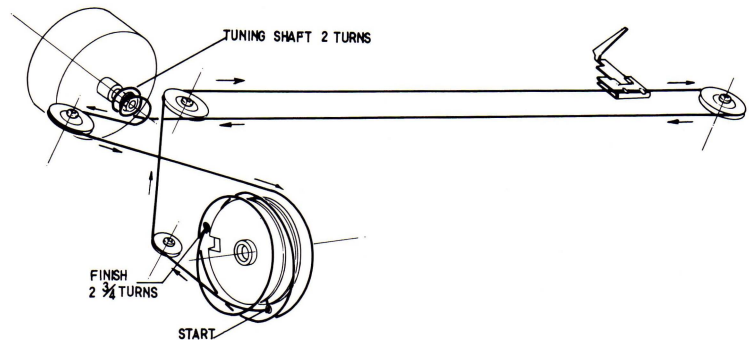
FILTER PCB	
R251, 252	Carbon 5.6k ohms $\frac{1}{2}W$
R253, 254	" 68k " "
R255, 256	" 220k " "
R257, 258	" 27k " "
R259, 260	" 9.1k " "
R261, 262	" 10k " "
R263, 264	" 1.5k " "
R265, 266	" 1.5M " "
R267, 268	" 680k " "
R269, 270	" 8.2k " "
R271, 272	" 100k " "

AMP PCB	
R501, 502	Carbon 2.2k ohms $\frac{1}{2}W$
R503, 504	" 100k " "
R505, 506, 517, 518	" 2.7k " "
R507, 508	" 470 " "
R509, 510	" 820 " "
R511, 512	" 22k " "
R513, 514	" 47k " "
R519, 520	" 220 " "
R521, 522	" 1k " "
R523, 524	" 330 " "
R525, 526	" 120k " "
R527, 528, 529, 530	Metal-Oxide 180 ohms 1W
R531, 532, 533, 534	Wire Wound 0.47 ohms 5W
R535, 536	Metal-Oxide 22 " 2W
R537, 538, 543, 544, 565	Carbon 4.7k " $\frac{1}{2}W$
R545, 546	" 8.2k " "
R547, 548, 553, 556, 559	" 10k " "
R539, 540, 541, 542, 549, 550	" 15k " "
R551, 552	" 6.8k " "
R554	Metal-Oxide 220 " 2W
R555	Carbon 150k " $\frac{1}{2}W$
R557	" 22k " "
R558	" 150k " "
R560	Metal-Oxide 150 ohms 2W
R561	FUSE Res. 4.7 " $\frac{1}{2}W$
R562	Cement Res. 220 ohms 5W
R563, 564	Carbon 1.2k " $\frac{1}{2}W$
R566, 567	Metal-Oxide 10 ohms 1W

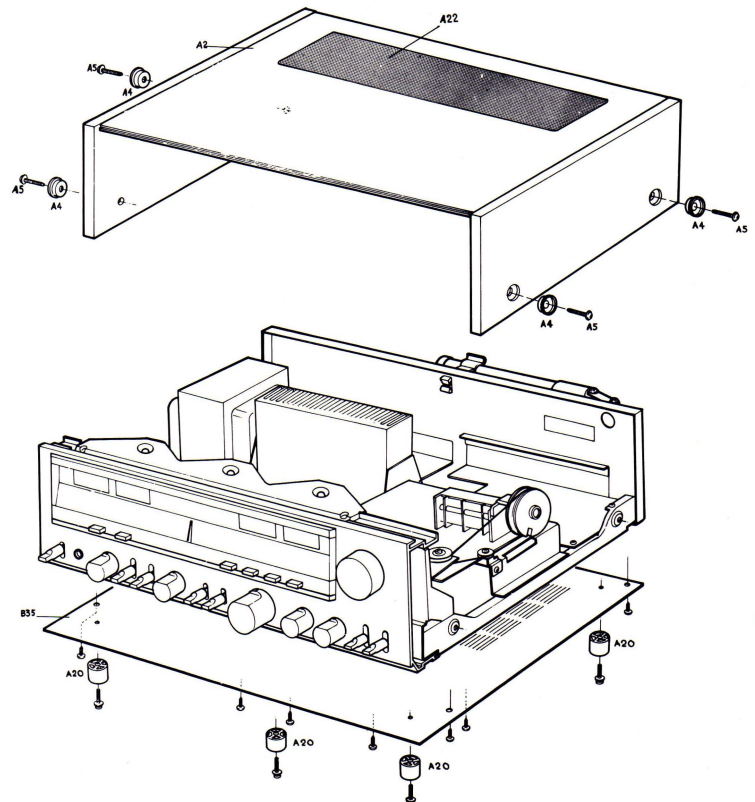
REF NO.	DESCRIPTION
POWER SUPPLY, MUTING & SPEAKER PCB	
R601	Solid Res 3.3M ohms
R602, 603	Metal-Oxide 2.2k " 2W
R611, 612	Carbon 10k " $\frac{1}{2}W$
R604, 605	Metal-Oxide 470 " 2W
R607, 608	Carbon 1.8k " $\frac{1}{2}W$
R609, 610	" 470 " "
VR1 *	Semi-Var-Res 50k
VR2 *	Semi-Var-Res 5k
VR3 *	Semi-Var-Res 20k
VR201, 202 *	VR-100k, VOLUME Cont
VR203 *	VR-250k, BALANCE Cont
VR204, 205 *	VR-100k, BASS Cont
VR206, 207 *	VR-50k, TREBLE Cont
VR501, 502 *	Semi-Var-Res 500 ohms
VR503, 504 *	Semi-Var-Res 200 ohms
VR601, 602 *	Semi Var-Res 10k ohms

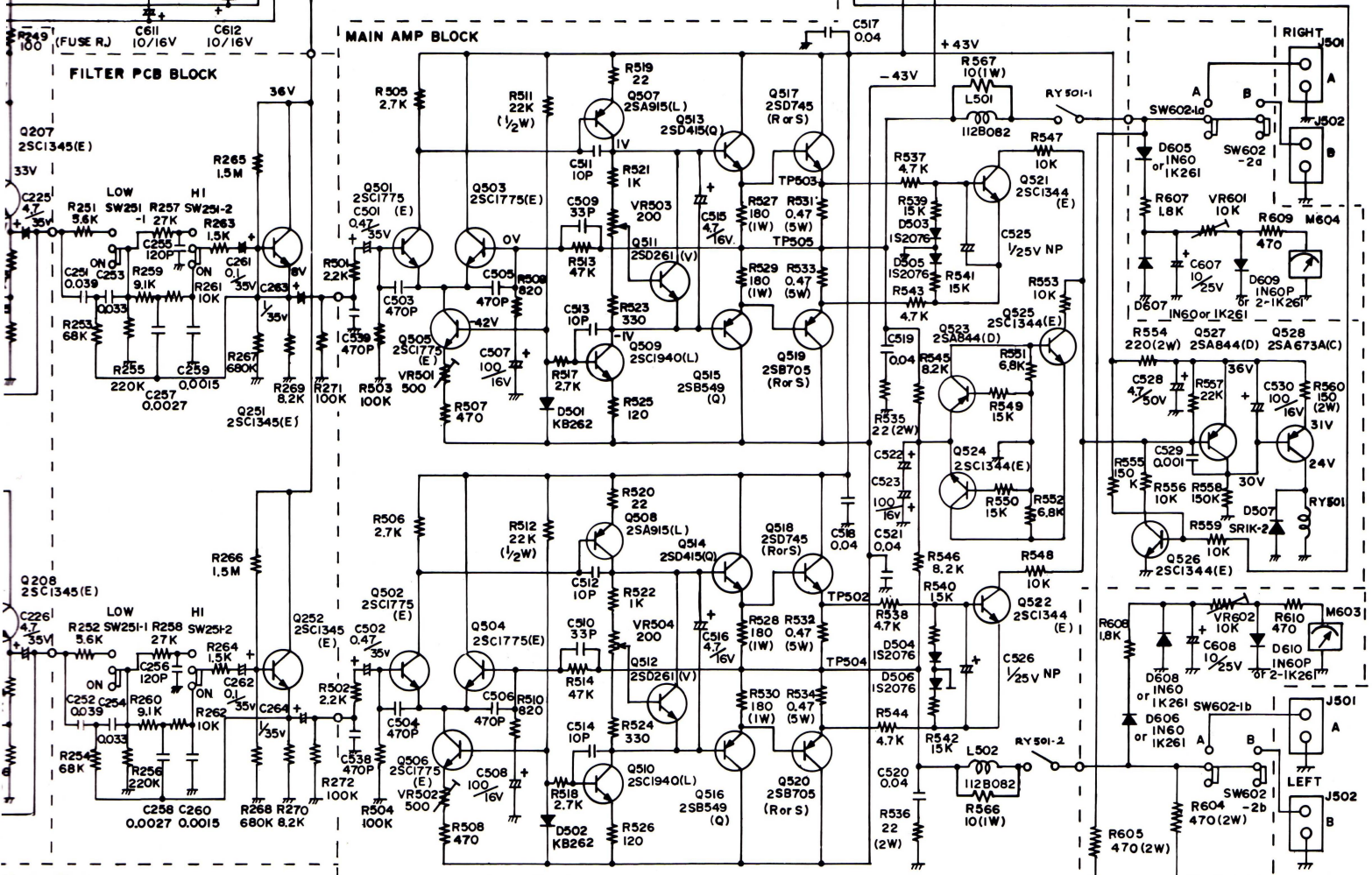
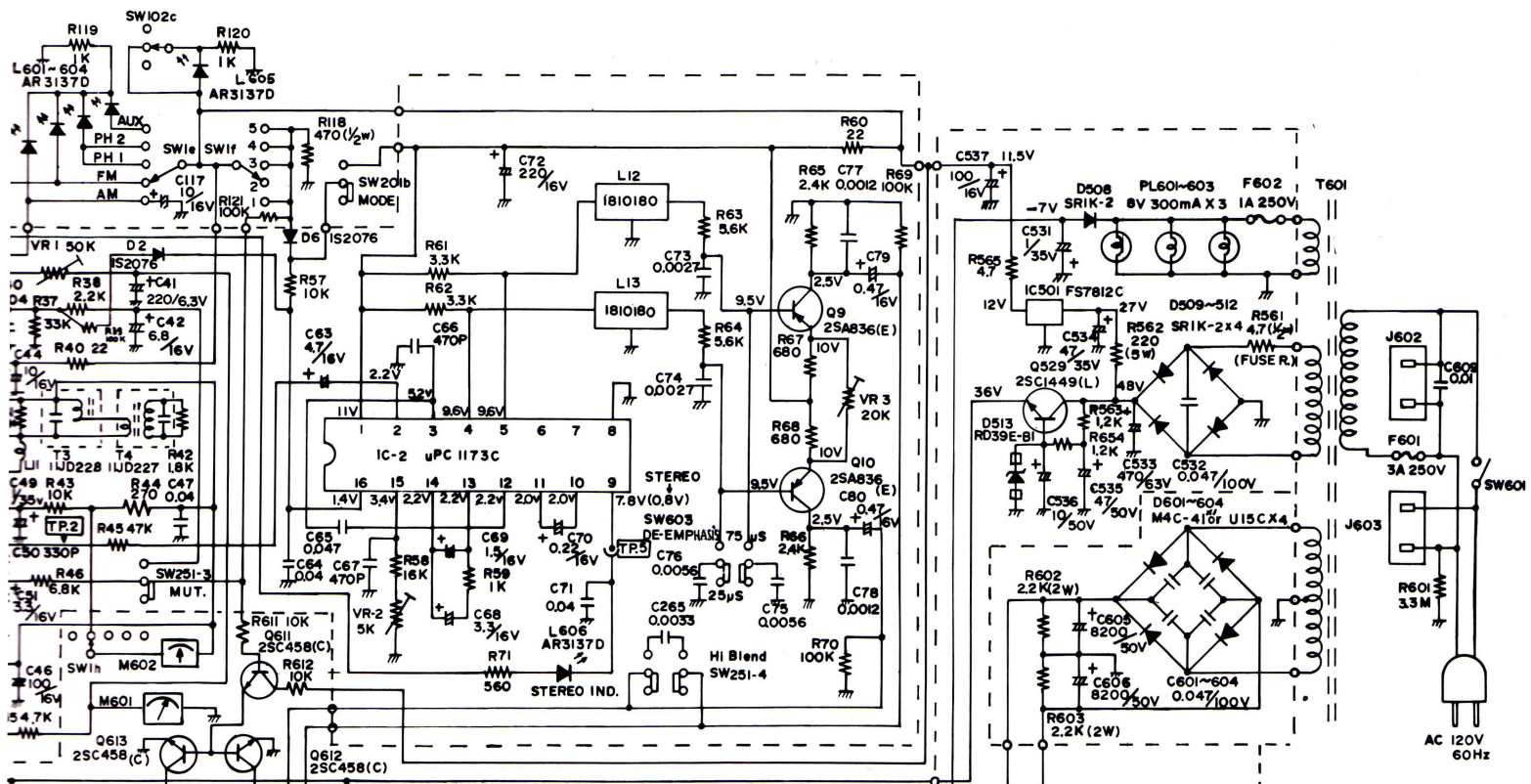
* See MISCELLANEOUS ELECTRICAL

DIAL STRING DIAGRAM



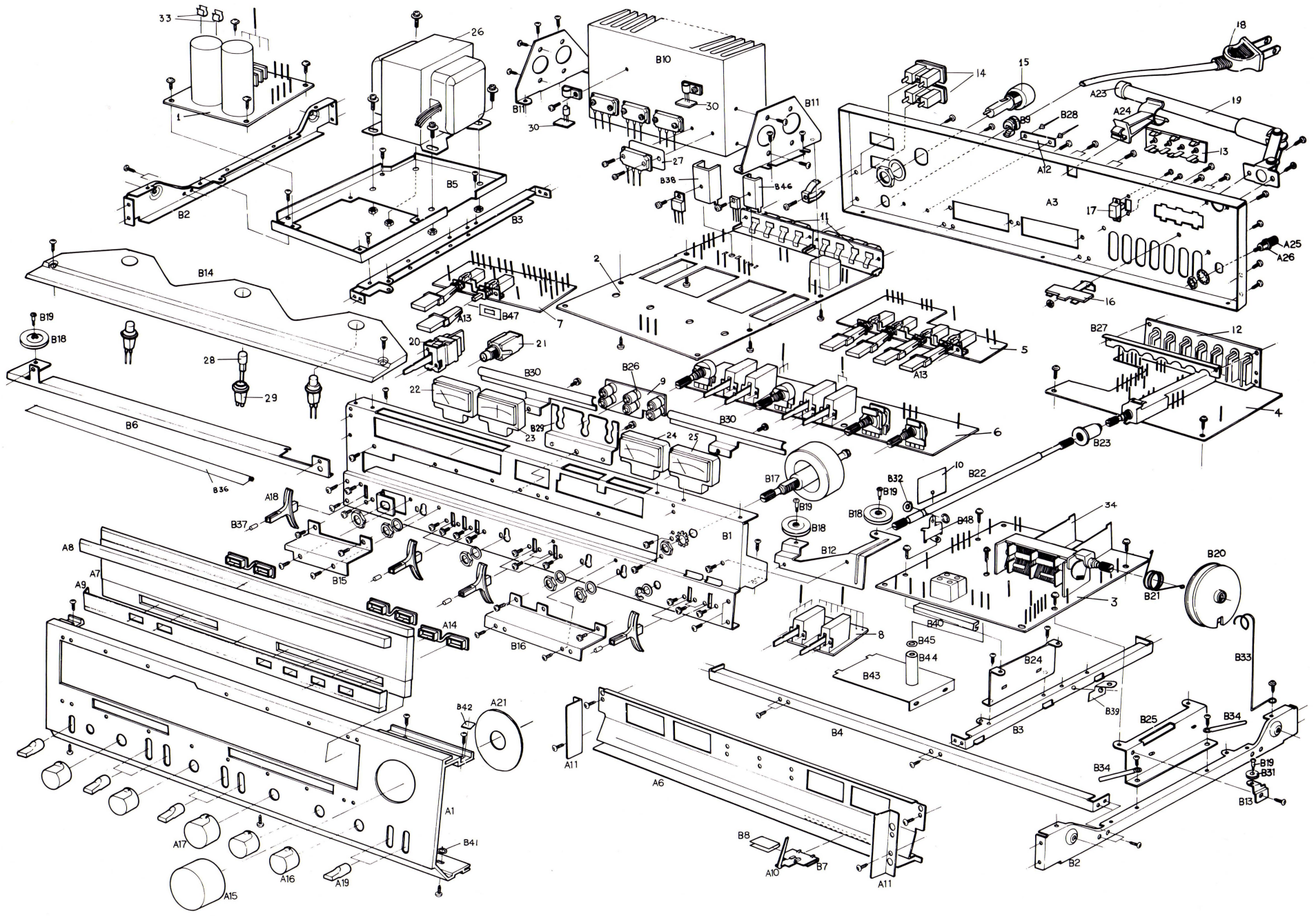
CABINET





01 POWER SW.
 02 SPEAKER SW.
 03 DE-EMPHASIS SW.

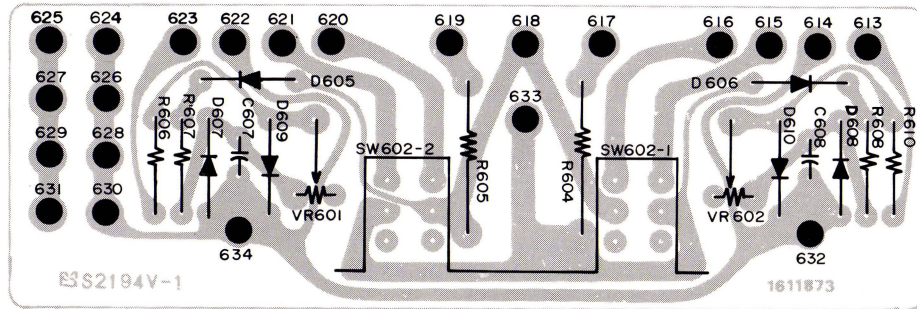
CHASSIS & MECHANISM



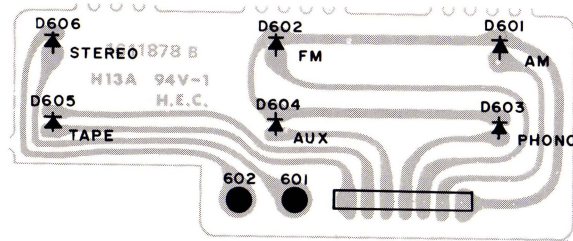
CONTROL P.C.B.

AMP & PROTECTOR P.C.B.

SPEAKER SW P.C.B.

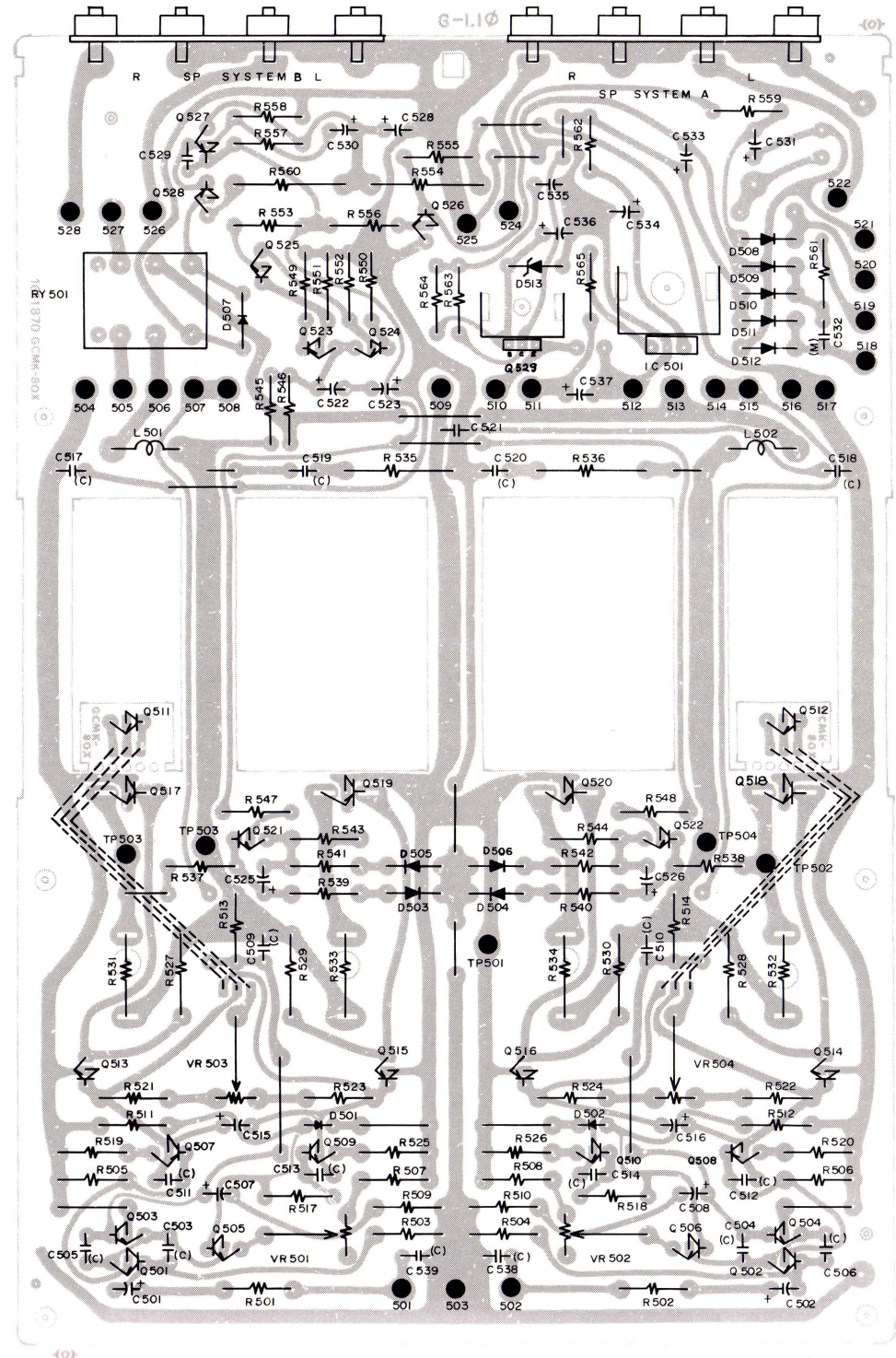
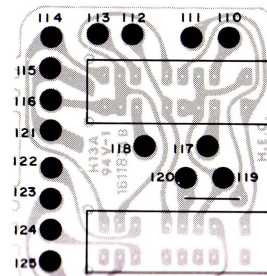
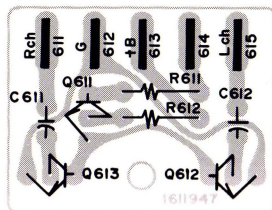


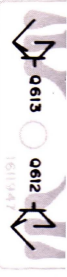
INDICATOR LED MTG. P.C.B.



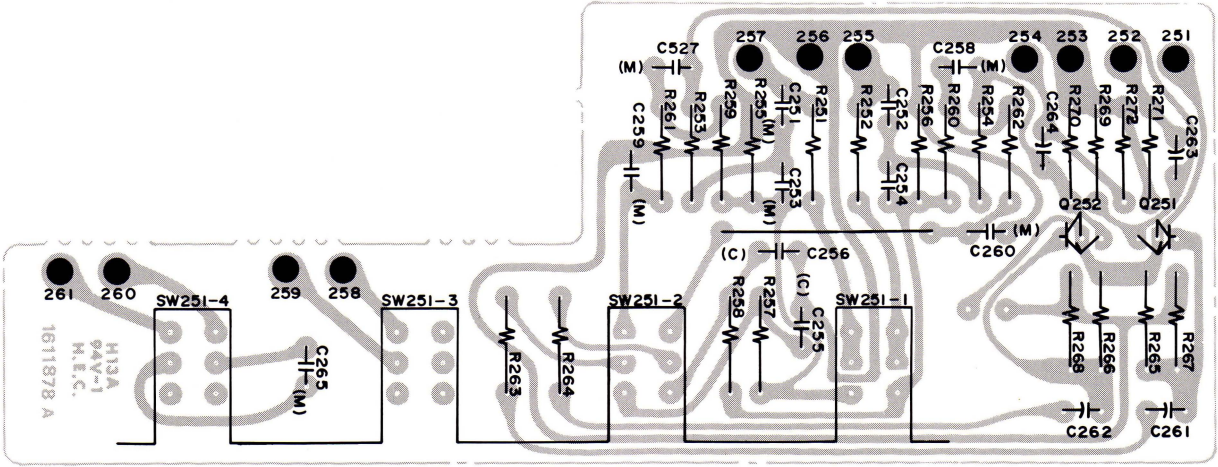
TAPE DUBBING SW P.C.B.

MUTING P.C.B.

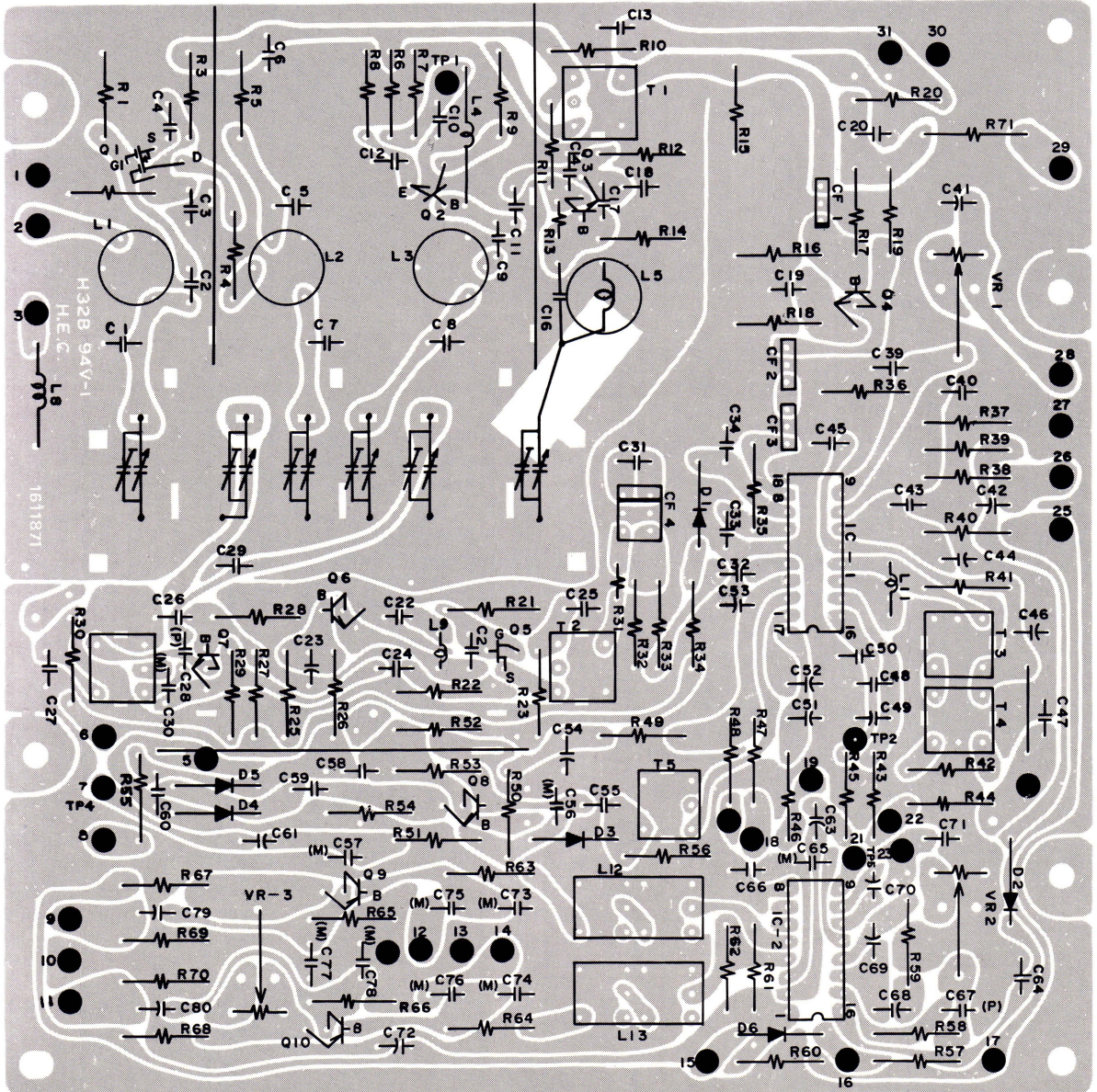




FILTER P.C.B.



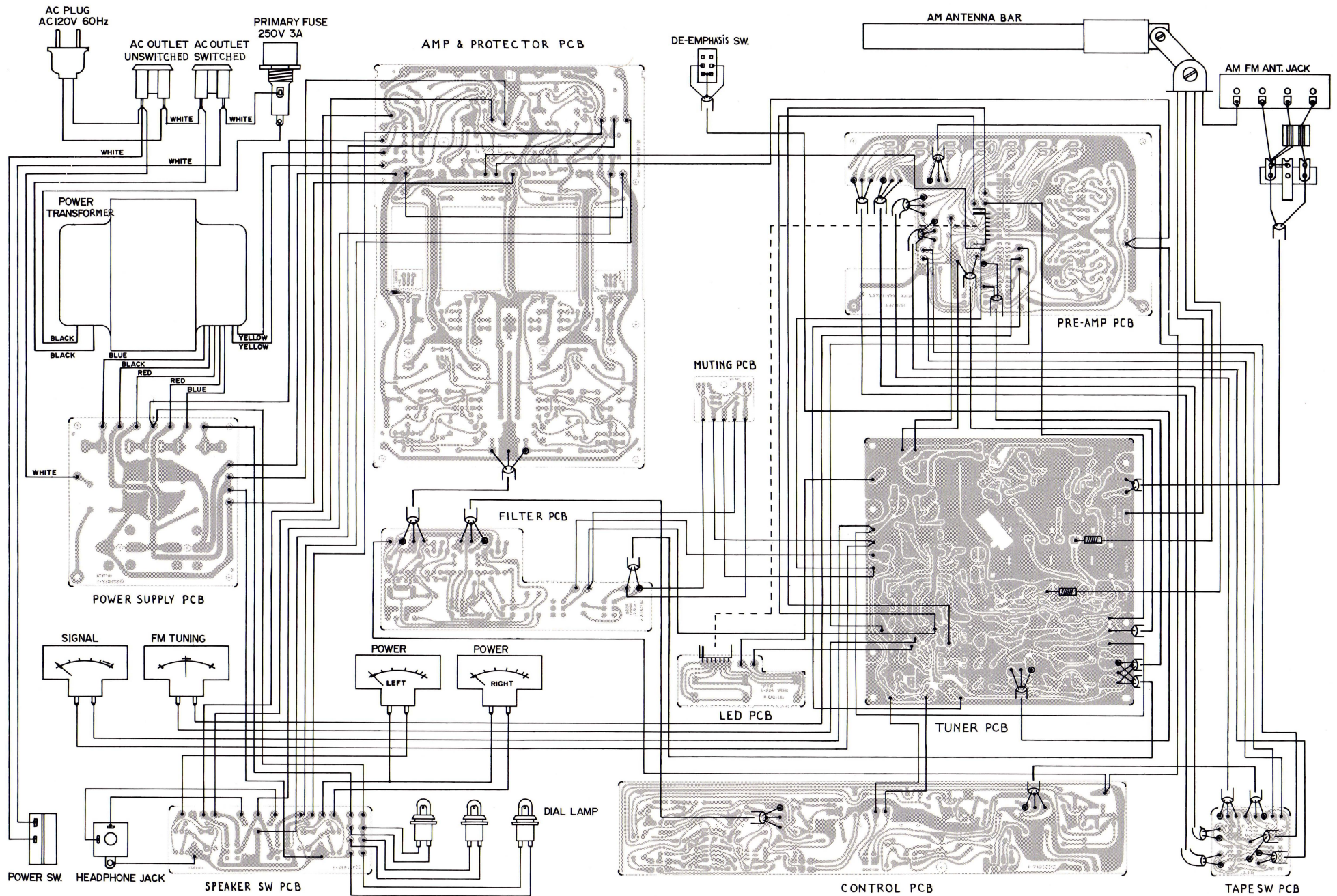
TUNER P.C.B.



H3A
94V-1
H.E.C.
1611878 A

H32B 94V-1
H.E.C.
L8
1611871

WIRING DIAGRAM



ALIGNMENT PROCEDURES

Alignment is performed at factory test equipment. Therefore, before alignment is attempted the unit should be thoroughly checked for circuit trouble.

EQUIPMENT REQUIRED

1. V.T.V.M
2. AM Signal Generator
3. FM Signal Generator
4. Sweep Marker Generator
5. Oscilloscope
6. FM Stereo Modulator
7. Distortion Meter
8. Frequency Counter
9. Loop Antenna (IRE Loop)

NOTES

- * None-Metalic tools should be used.
- * Keep Signal Generator level as low as possible to avoid clipping.
- * Volume control should be set to minimum unless otherwise specified.
- * Standard modulation is 400 Hz at 30% amplitude for AM (1 kHz at 22.5 Hz deviation for FM)
- * Set Tone Control to Maximum treble.
- * Connect low side of signal source and output indicator to chassis ground unless otherwise specified.

STEP	ADJUSTING CIRCUIT	CONNECTIONS		GEN. FREQ 'CY	DIAL SETTING	ADJUST	ADJUST FOR
		INPUT	OUTPUT				
AM							
1	IF	Connect Sweep & Marker Generator to <u>TP 3</u> .	Connect Oscilloscope to <u>TP 4</u> .	455kHz (400Hz Mod)	Tuning gang fully closed	T2 (AM IFT)	Maximum Output
2	BAND	Connect Antenna Loop to AM Signal Generator and place near unit being aligned.	Connect VTVM, Scope to audio output with an 8 ohm load in place.	600kHz (400Hz Mod)	600kHz	L10 (AM OSC)	
3				1400kHz (400Hz Mod)	1400kHz	TC7 (Trimmer)	
4				TRACKING	600kHz	Tune to signal	
5	1400kHz		TC5 (Trimmer)				
FM							
1	IF	Connect Sweep & Marker Generator to <u>TP 1</u> .	Connect Oscilloscope to <u>TP 2</u> .	10.7 MHz	Tuning gang fully closed	T1 T3 T4	Maximum Output & Symmetrical response.
2	OSC			88MHz	88MHz	L5	Maximum Output
3				108MHz	108MHz	TC1	
4	RF	Connect FM Signal Gen. thru Dummy Antenna to FM Ant. terminals (300 ohms)	Connect VTVM to TAPE REC 1 jack.	90MHz (Mod.)	Tune to signal	L2 L3, L1	
5				106MHz (Mod.)		TC3 TC4 TC1	
6	DETECTOR		Connect Scope, VTVM & Distortion Meter to TAPE REC 1 jack.	98MHz		T3 T4	
MPX							
1	19kHz	Connect FM Stereo Sig. Modulator, FM Signal Gen. to FM Ant. terminals (300 ohms)	Connect Frequency Counter to <u>TP 5</u> .			VR2	A reading of 19kHz on Freq. Counter.
2	SEPARATION		Connect Oscilloscope, VTVM to TAPE REC 1 jack.	98MHz	98MHz	VR3	Minimum R(L) output when L(R) signal is modulated. Adjust for best separation.

AMPLIFIER SECTION

ADJUSTING CIRCUIT	CONNECTIONS	SETTING	ADJUST	ADJUST FOR
IDLING CURRENT	Connect VTVM to TP503,505 (right CH output) and TP502,504(left CH output) with an 8 ohm load at spkr output.	-Turn Vol. Cont. to minimum position. -Set Function Sw to AUX position.	VR503 VR504	A reading of 9.4 mV on meter (equivalent to 20 mA idling current.)
DC BALANCE	Connect VTVM to TP504(right CH output) and TP505(left CH output) with an 8 ohm load at spkr output.		VR501 VR502	Minimum value (0±5 mV)
POWER METER	Connect Sig. Gen. to AUX input and VTVM to output terminals.	-Turn Vol. Cont. to max. position. -Set Function Sw to AUX position.	VR601 VR602	A reading of 20V on VTVM (adjust Sig. Generator) A reading of 50W/8 ohm on the Power Meter (adjust VR601,602)