

WE SIMPLY SOUND BETTER.

AV1260 / AV2600

SERVICE MANUAL

B&K COMPONENTS, LTD.
2100 Old Union Road
Buffalo, New York 14227-2725
U.S.A.

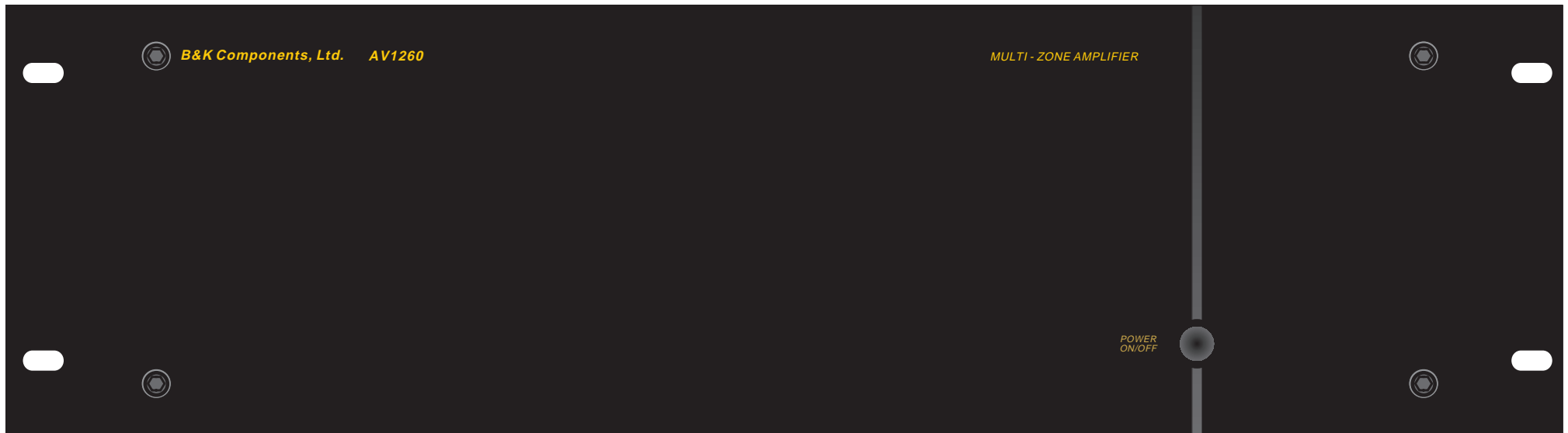
B & K

WE SIMPLY SOUND BETTER.

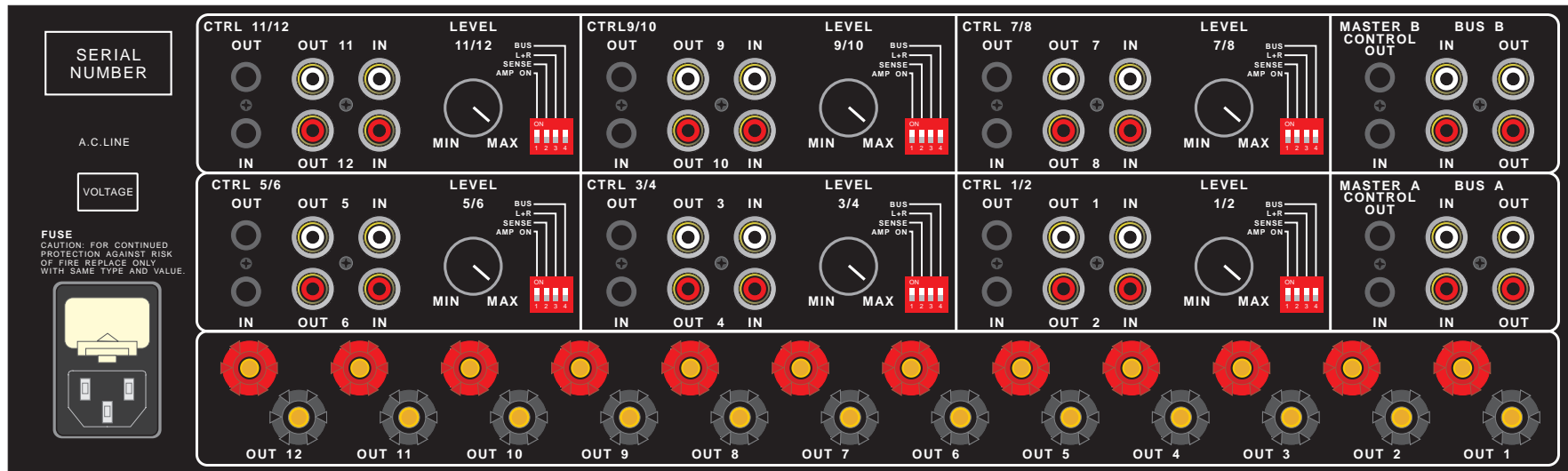
Pictures

B&K COMPONENTS, LTD.
2100 Old Union Road
Buffalo, New York 14227-2725
U.S.A.

AV1260 Amplifier



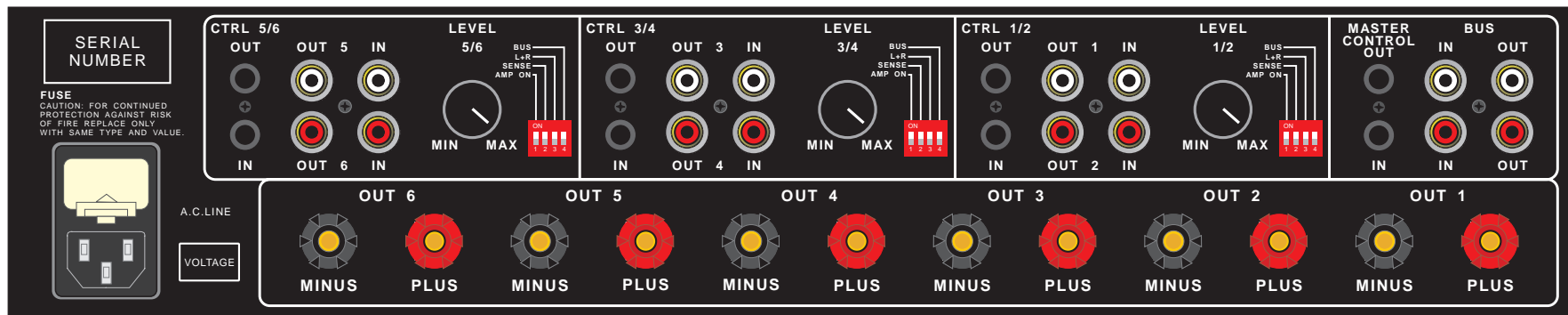
AV1260 Amplifier



AV2600 Amplifier



AV2600 Amplifier

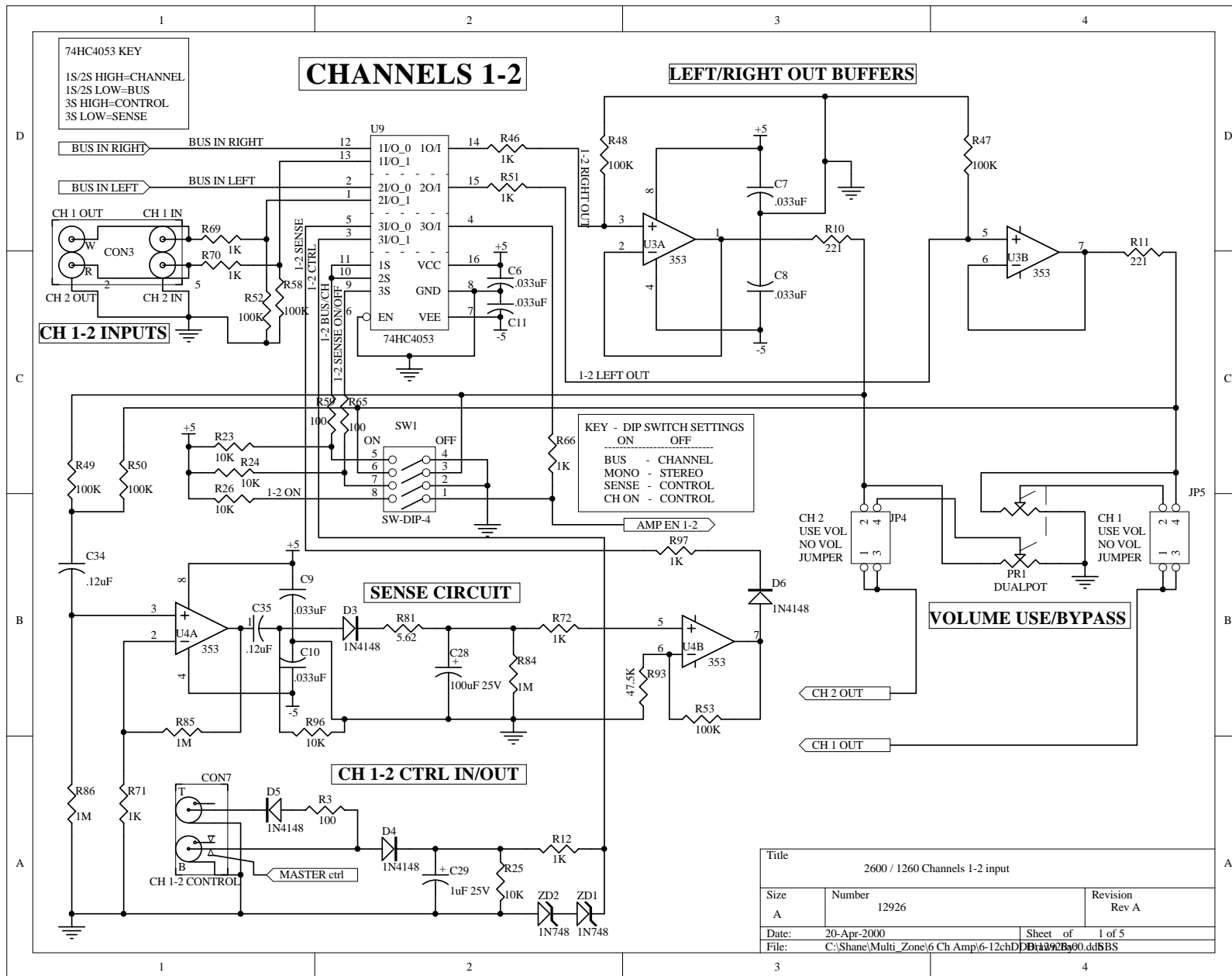


B & K

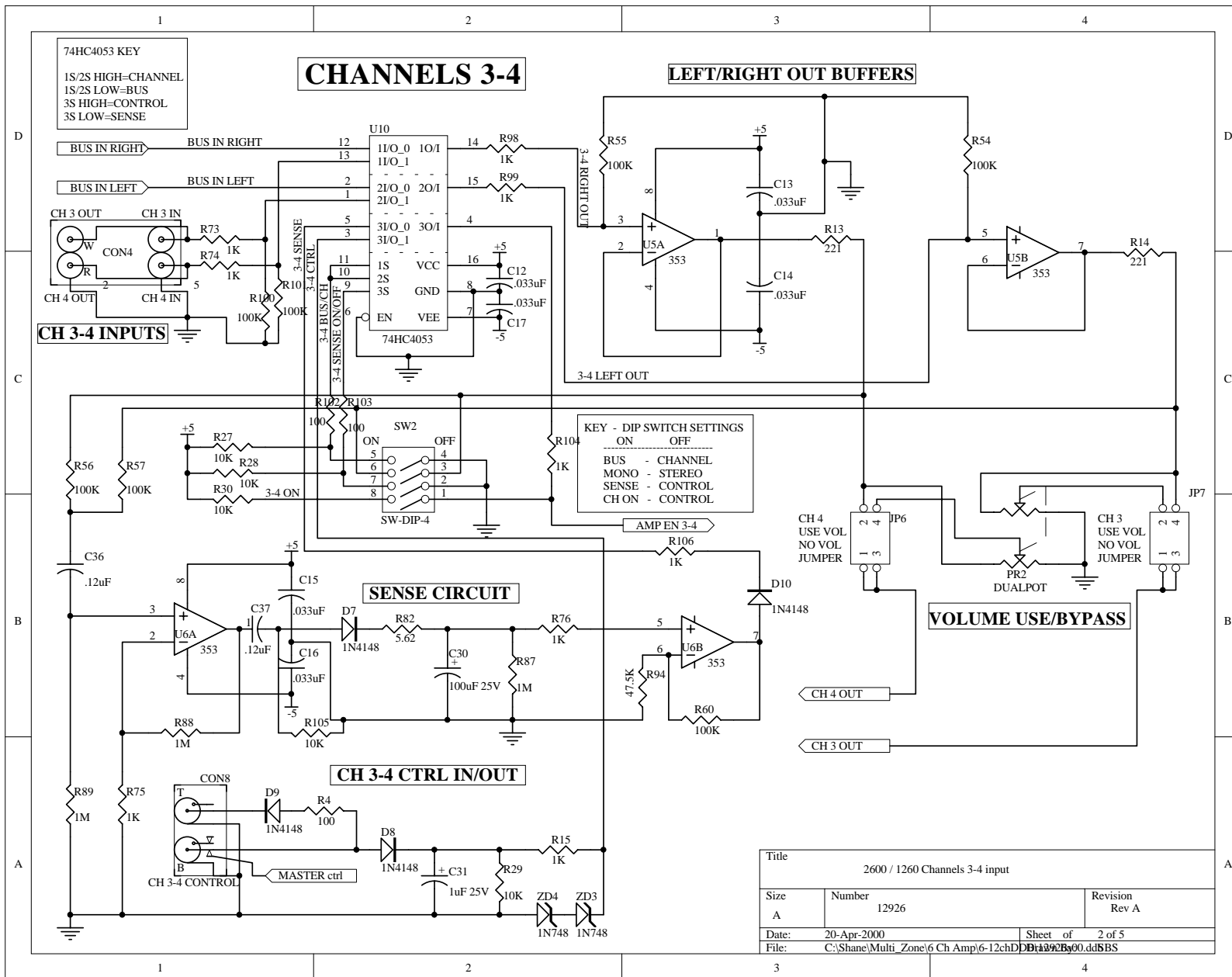
WE SIMPLY SOUND BETTER.

Schematics

B&K COMPONENTS, LTD.
2100 Old Union Road
Buffalo, New York 14227-2725
U.S.A.



Title		
2600 / 1260 Channels 1-2 input		
Size	Number	Revision
A	12926	Rev A
Date:	20-Apr-2000	Sheet of 1 of 5
File:	C:\Shane\Multi_Zone\6 Ch Amp\6-12chDD11392B00.ddSBS	



74HC4053 KEY
 1S/2S HIGH=CHANNEL
 1S/2S LOW=BUS
 3S HIGH=CONTROL
 3S LOW=SENSE

CHANNELS 3-4

LEFT/RIGHT OUT BUFFERS

CH 3-4 INPUTS

KEY - DIP SWITCH SETTINGS

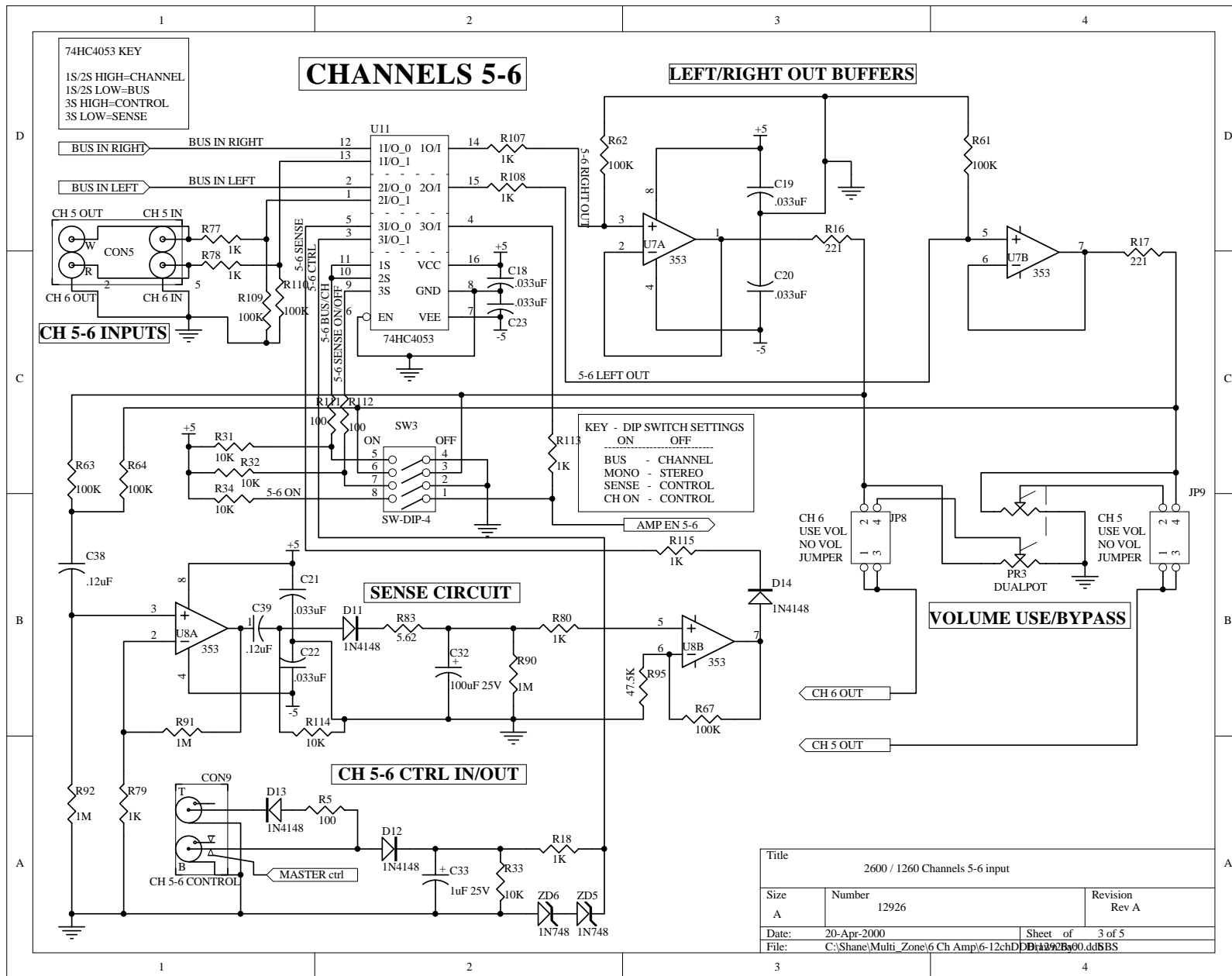
ON	OFF
BUS - CHANNEL	4
MONO - STEREO	3
SENSE - CONTROL	2
CH ON - CONTROL	1

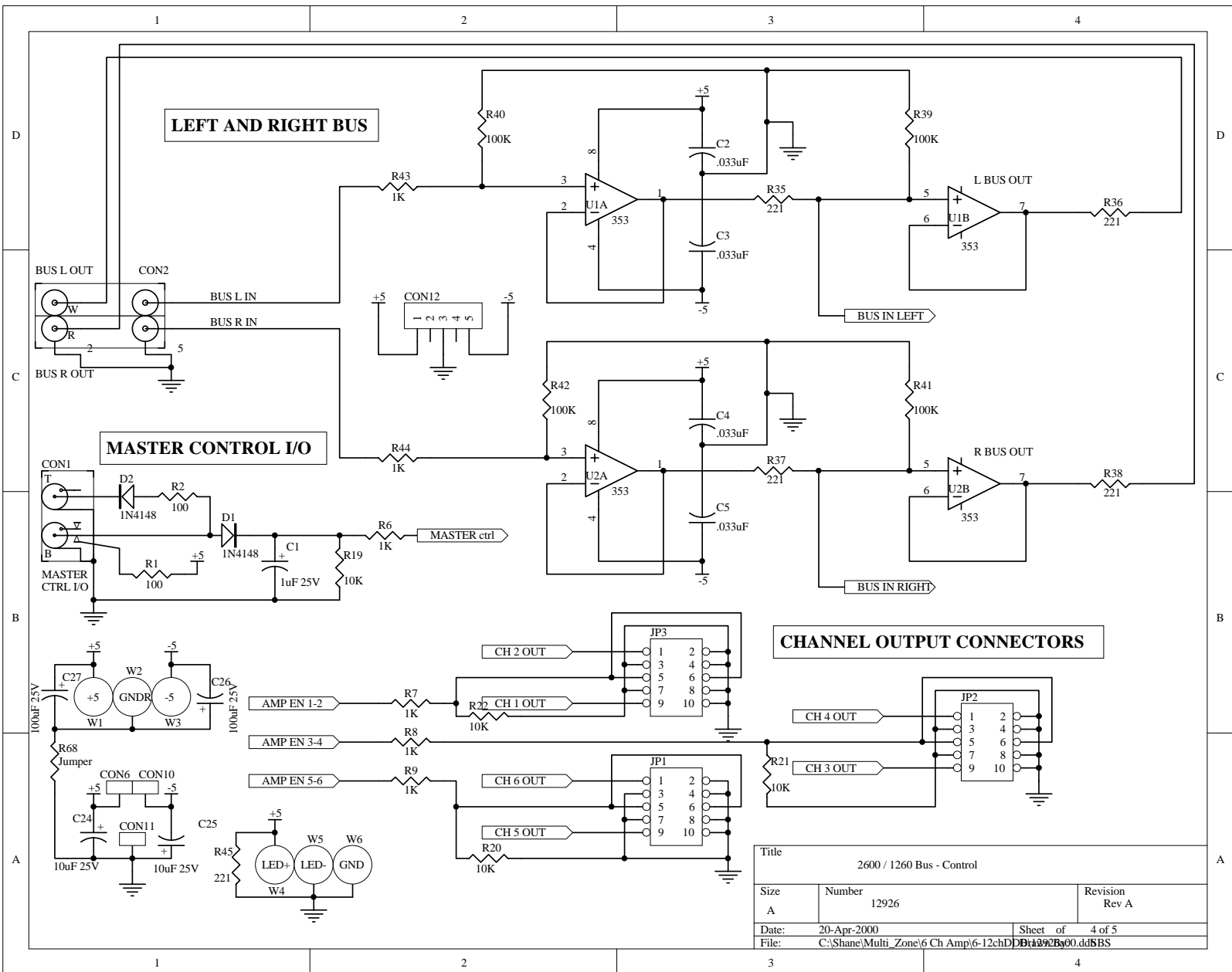
SENSE CIRCUIT

VOLUME USE/BYPASS

CH 3-4 CTRL IN/OUT

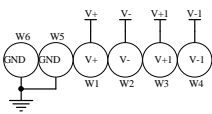
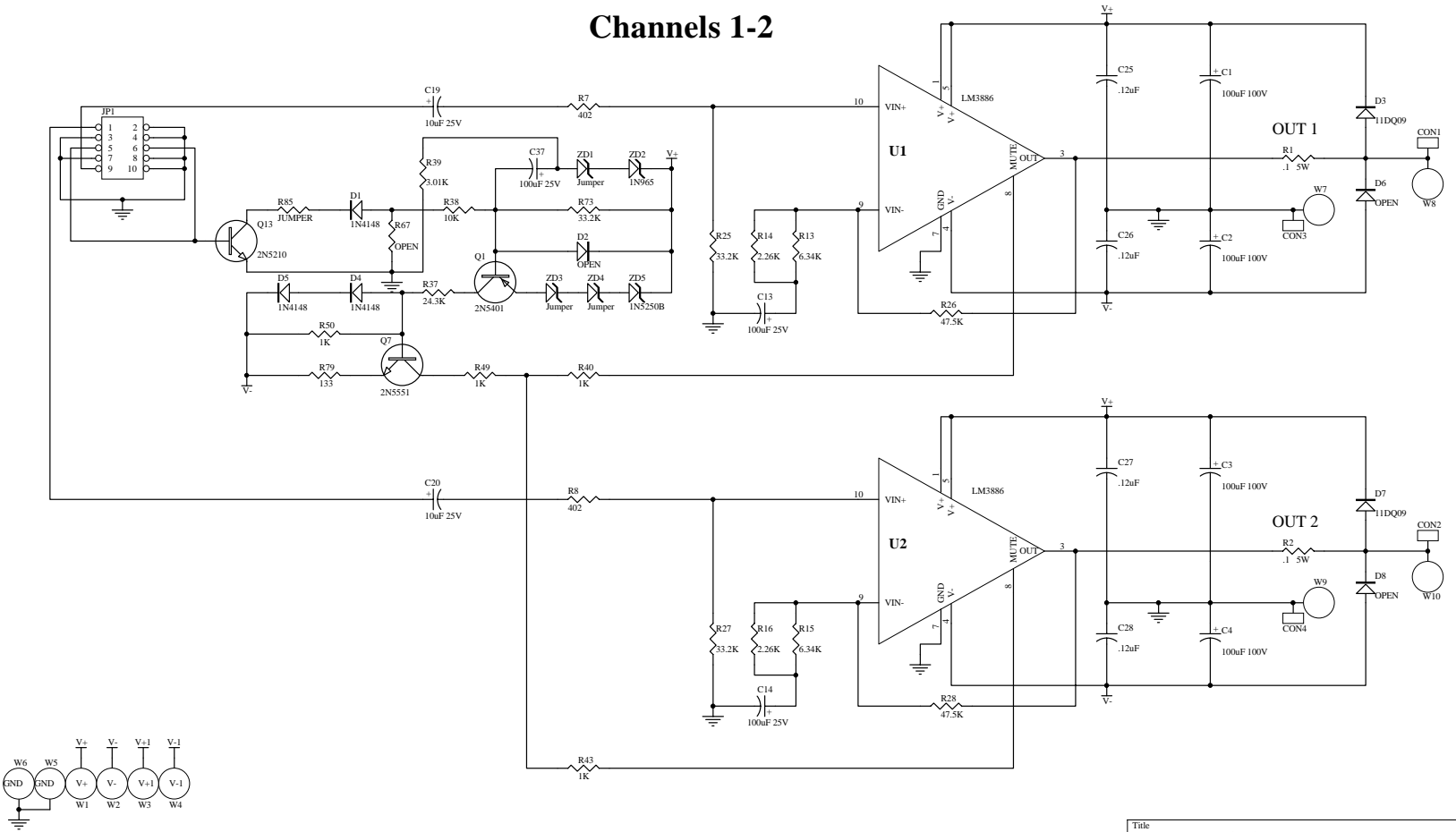
Title		
2600 / 1260 Channels 3-4 input		
Size	Number	Revision
A	12926	Rev A
Date:	20-Apr-2000	Sheet of 2 of 5
File:	C:\Shane\Multi_Zone\6 Ch Amp\6-12chDD11392B00.ddSBS	





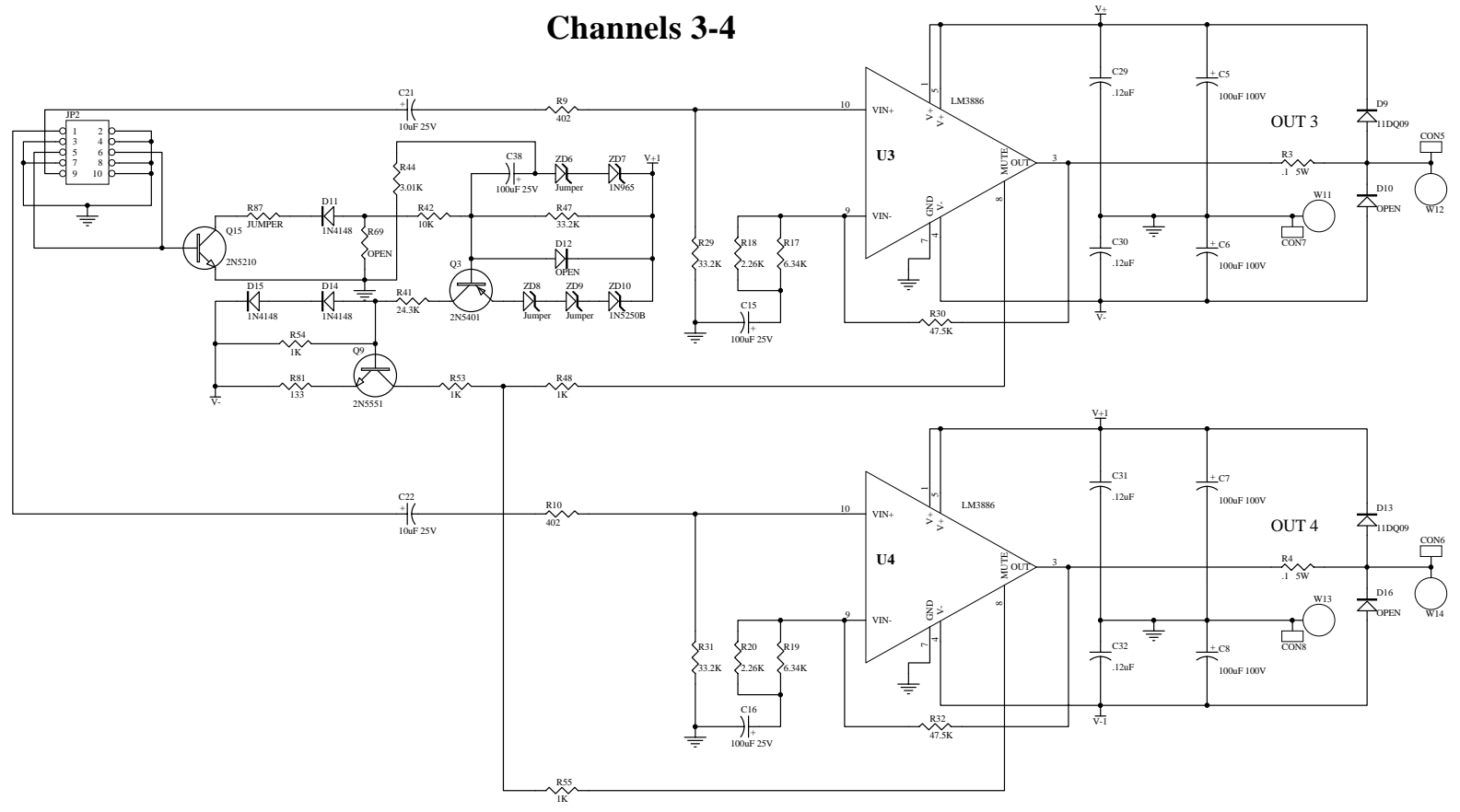
Title		
2600 / 1260 Bus - Control		
Size	Number	Revision
A	12926	Rev A
Date:	20-Apr-2000	Sheet of 4 of 5
File:	C:\Shane\Multi_Zone\6 Ch Amp\6-12chDD11392600.ddSBS	

Channels 1-2



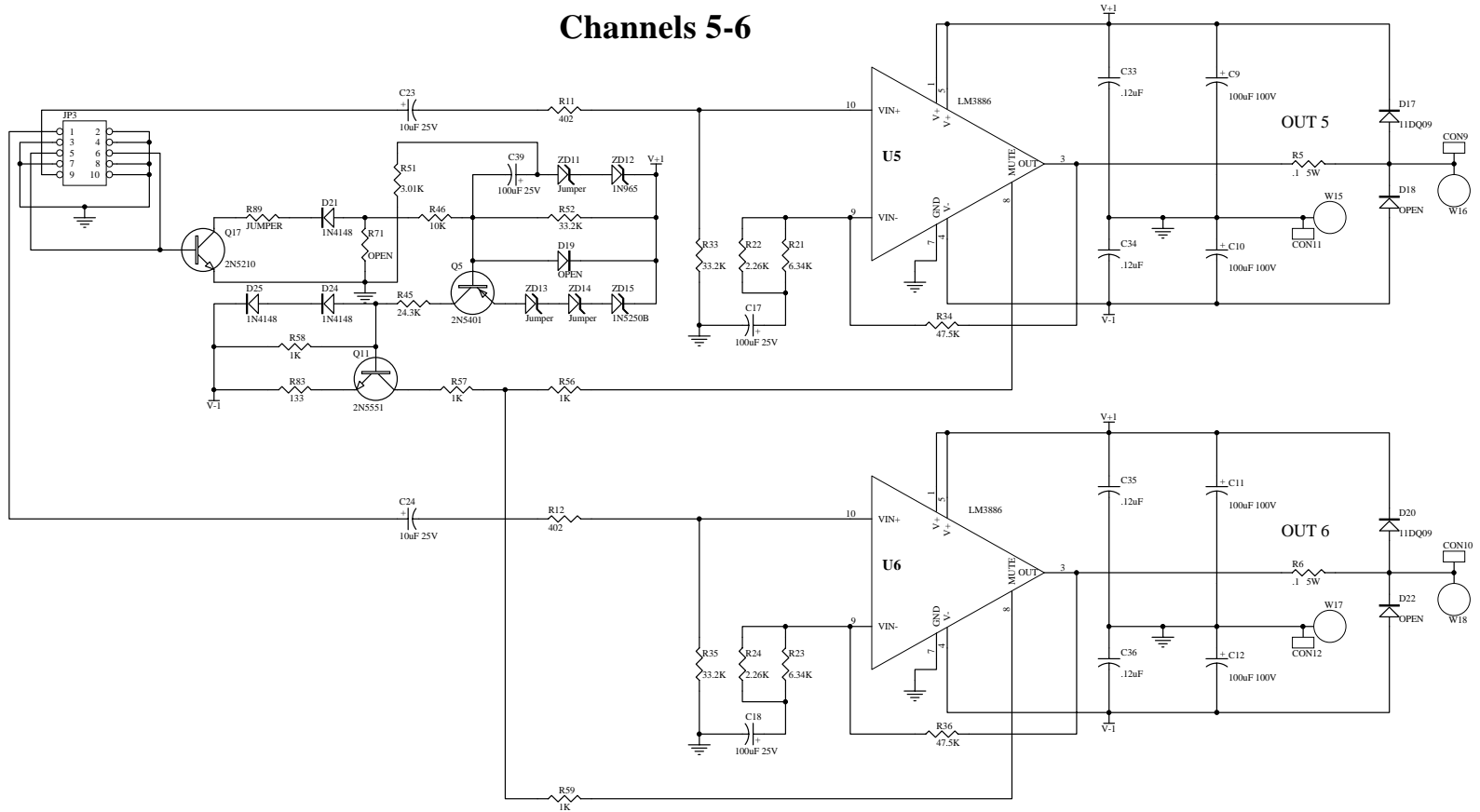
Title			
2600 / 1260 Channel 1-2 output			
Size	Number	Revision	
B	12927	Rev A	
Date:	20-Apr-2000	Sheet of	1 of 4
File:	C:\Shane\Multi_Zone\6 Ch Amp\6-12.tbl\B11927R00.d8BS		

Channels 3-4



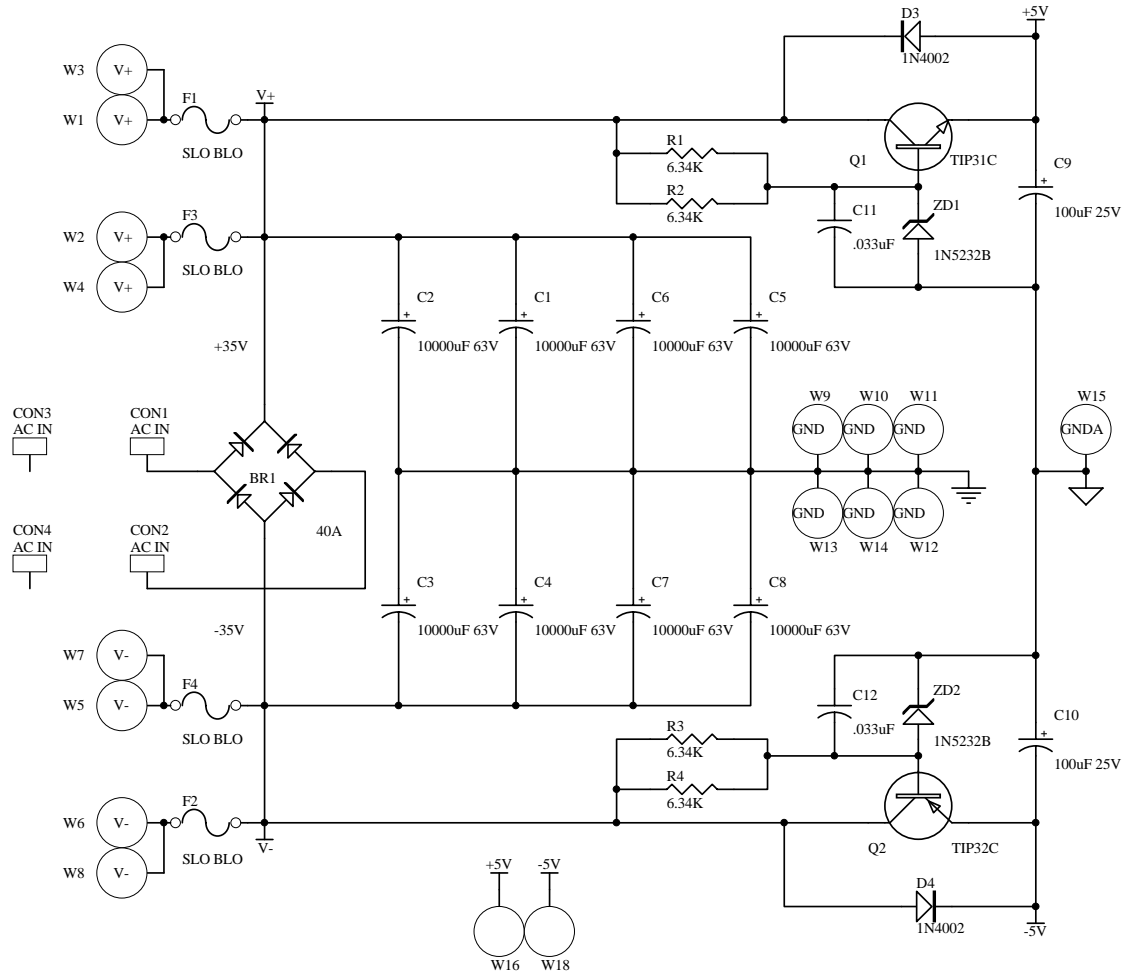
Title		
2600 / 1260 Channel 3-4 output		
Size	Number	Revision
B	12927	Rev A
Date:	20-Apr-2000	Sheet of 3 of 4
File:	C:\Shane\Multi_Zone\6 Ch Amp\6-12ch\B11492600.d8BS	

Channels 5-6



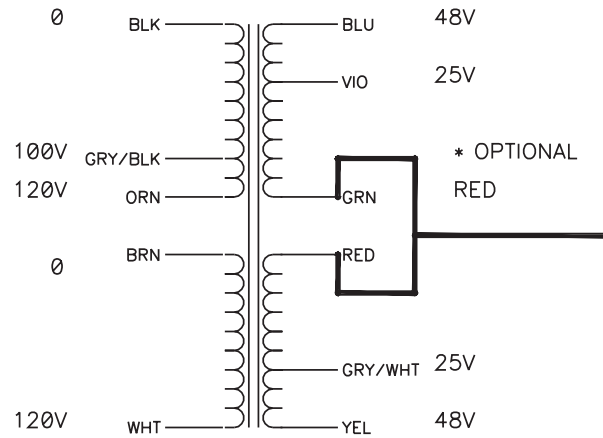
Title		
2600 / 1260 Channel 5-6 output		
Size	Number	Revision
B	12927	Rev A
Date:	20-Apr-2000	Sheet of 3 of 4
File:	C:\Shane\Multi_Zone\6 Ch Amp\6-12ch\B11992800.d8BS	

POWER SUPPLY



Title		
2600 / 1260 Power Supply Bd		
Size	Number	Revision
A	12925	Rev A
Date:	20-Apr-2000	Sheet of 1 of 1
File:	C:\Shane\Multi_Zone\6 Ch Amp\6-12chDD11392500.ddSBS	

625VA MULTI SEC/PRI TOROID



SECONDARY WIRES:
16 GAUGE

SECONDARY TERMINATION:
 BLUE PANDUIT DNF 14-250 F1B TERMINAL
 VIO PANDUIT DNF 14-250 F1B TERMINAL
 GRY/WHT PANDUIT DNF 14-250 F1B TERMINAL
 YELLOW PANDUIT DNF 14-250 F1B TERMINAL
 RED AMP 36160 #10 RING

PRIMARY WIRES:
18 GAUGE

PRIMARY TERMINATION:
 BLACK PANDUIT DNF 18-250 F1B TERMINAL
 GRY/BLK PANDUIT DNF 18-250 F1B TERMINAL
 ORANGE PANDUIT DNF 18-250 F1B TERMINAL
 BROWN PANDUIT DNF 18-250 F1B TERMINAL
 WHITE PANDUIT DNF 18-250 F1B TERMINAL

*** MAGNETIC SHIELDING BAND AROUND TRANSFORMER

THE SECONDARY VOLTAGES LISTED ARE FOR FULL LOAD CONDITIONS.

APPROX. MAX DIMENSIONS OF TOROIDAL TRANSFORMER:

HEIGHT: 3.5"

APPROX. MAX MOUNTING DIM. 6.0"

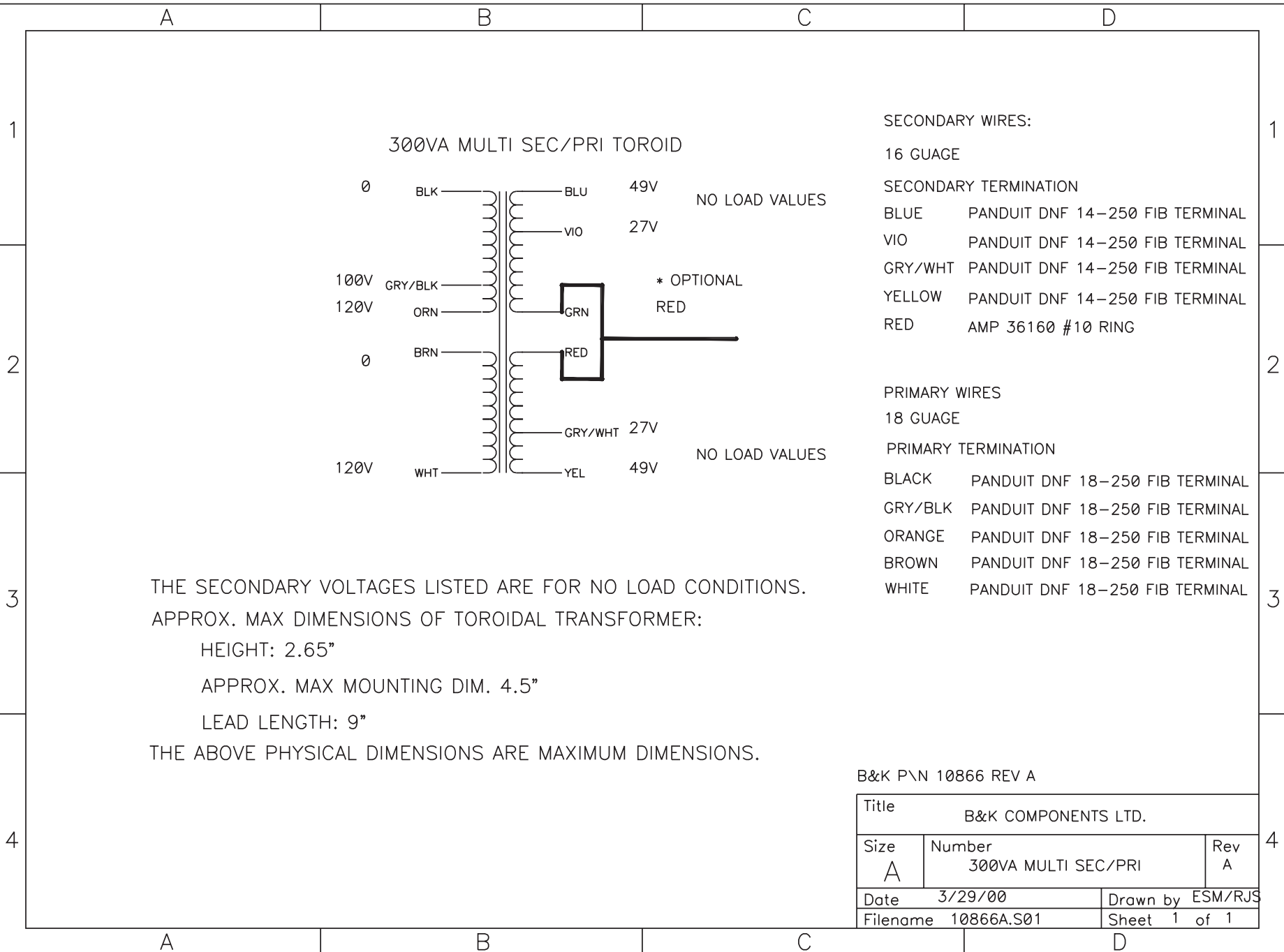
LEAD LENGTH: 9"

THE ABOVE PHYSICAL DIMENSIONS ARE MAXIMUM DIMENSIONS.

LEADS EXIT BOTTOM 180 DEGREES OPPOSITE EACH OTHER.

Title			B&K COMPONENTS LTD.		
Size	Number		Rev		
A	B&K P\N 12934		A		
	625VA MULTI SEC/PRI				
Date	3/21/00		Drawn by ESM/RJS		
Filename	12934A.S01		Sheet 1 of 1		

7/22/97



SECONDARY WIRES:

16 GAUGE

SECONDARY TERMINATION

- BLUE PANDUIT DNF 14-250 FIB TERMINAL
- VIO PANDUIT DNF 14-250 FIB TERMINAL
- GRY/WHT PANDUIT DNF 14-250 FIB TERMINAL
- YELLOW PANDUIT DNF 14-250 FIB TERMINAL
- RED AMP 36160 #10 RING

PRIMARY WIRES

18 GAUGE

PRIMARY TERMINATION

- BLACK PANDUIT DNF 18-250 FIB TERMINAL
- GRY/BLK PANDUIT DNF 18-250 FIB TERMINAL
- ORANGE PANDUIT DNF 18-250 FIB TERMINAL
- BROWN PANDUIT DNF 18-250 FIB TERMINAL
- WHITE PANDUIT DNF 18-250 FIB TERMINAL

THE SECONDARY VOLTAGES LISTED ARE FOR NO LOAD CONDITIONS.
 APPROX. MAX DIMENSIONS OF TOROIDAL TRANSFORMER:
 HEIGHT: 2.65"
 APPROX. MAX MOUNTING DIM. 4.5"
 LEAD LENGTH: 9"
 THE ABOVE PHYSICAL DIMENSIONS ARE MAXIMUM DIMENSIONS.

B&K P\N 10866 REV A

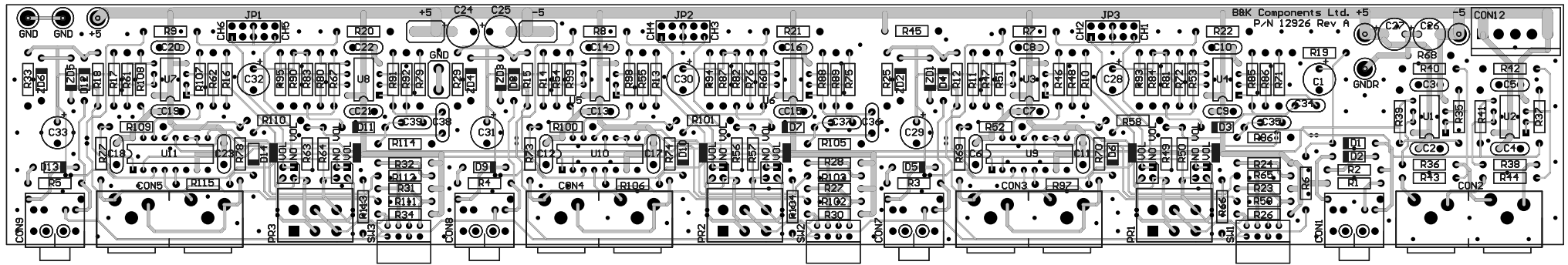
Title			B&K COMPONENTS LTD.		
Size	Number		Rev		
A	300VA MULTI SEC/PRI		A		
Date	3/29/00		Drawn by ESM/RJS		
Filename	10866A.S01		Sheet 1 of 1		

B & K

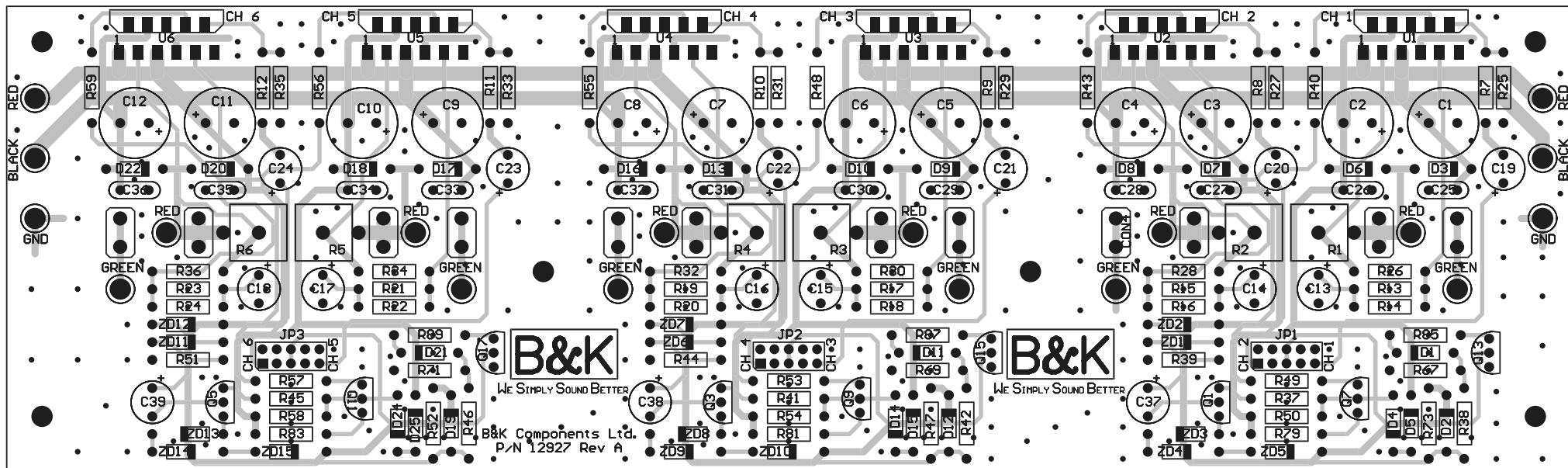
WE SIMPLY SOUND BETTER.

Printed Circuit Boards
PCB's

B&K COMPONENTS, LTD.
2100 Old Union Road
Buffalo, New York 14227-2725
U.S.A.



B8K Components Ltd. +5
P/N 12926 Rev. A



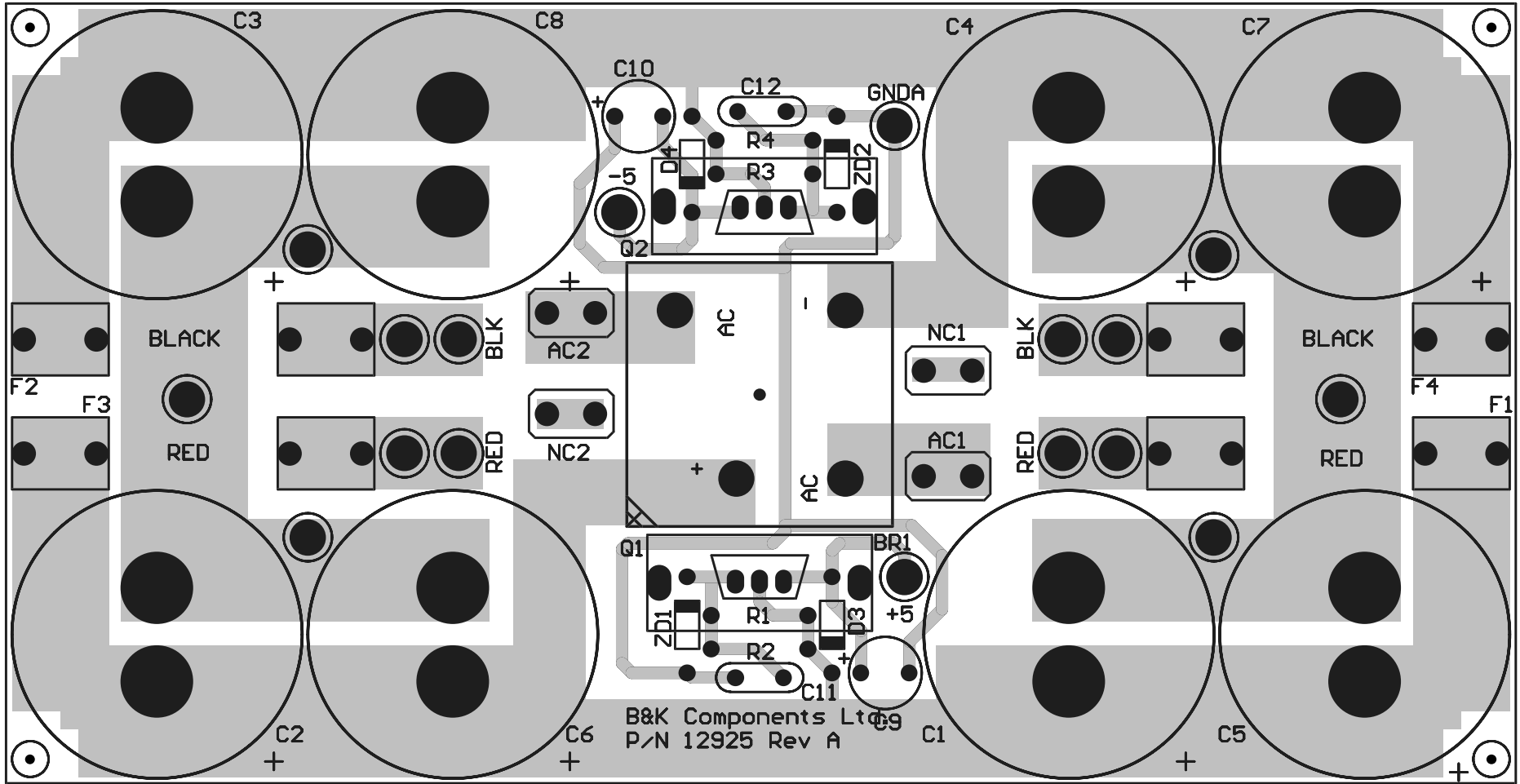
B&K

We SIMPLY SOUND BETTER

B&K Components Ltd.
P/N 12927 Rev A

B&K

We SIMPLY SOUND BETTER



B & K

WE SIMPLY SOUND BETTER.

Bill of Materials

BOM's

B&K COMPONENTS, LTD.
2100 Old Union Road
Buffalo, New York 14227-2725
U.S.A.

Bill of Material for 12926a00.Bom

Used	Part Type	Designator	Footprint	Description
1	+5	W1	PC_PAD	MOLEX 102" PC MOUNT CRIMP CONNECTOR
1	-5	W3	PC_PAD	MOLEX 102" PC MOUNT CRIMP CONNECTOR
6	.12uF	C34 C35	RAD200	CAPACITOR
		C36 C37		
		C38 C39		
22	.033uF	C2 C3 C4	RAD200	CAPACITOR
		C5 C6 C7		
		C8 C9 C10		
		C11 C12		
		C13 C14		
		C15 C16		
		C17 C18		
		C19 C20		
		C21 C22		
		C23		
33	1K	R6 R7 R8	RES500	RESISTOR
		R9 R12 R15		
		R18 R43		
		R44 R46		
		R51 R66		
		R69 R70		
		R71 R72		
		R73 R74		
		R75 R76		
		R77 R78		
		R79 R80		
		R97 R98		
		R99 R104		
		R106 R107		
		R108 R113		
		R115		
7	1M	R84 R85	RES500	RESISTOR
		R86 R87		
		R89 R90		
		R92		
6	1N748	ZD1 ZD2	DIODE. 4	ZENER DIODE
		ZD3 ZD4		
		ZD5 ZD6		
14	1N4148	D1 D2 D3	DIODE. 4	DIODE
		D4 D5 D6		
		D7 D8 D9		
		D10 D11		
		D12 D13		
		D14		
4	1uF 25V	C1 C29 C31	CAP200RP	POLAR CAPACITOR
		C33		
3	5.62	R81 R82	RES500	RESISTOR
		R83		
19	10K	R19 R20	RES500	RESISTOR
		R21 R22		
		R23 R24		
		R25 R26		
		R27 R28		
		R29 R30		
		R31 R32		
		R33 R34		
		R96 R105		
		R114		
2	10uF 25V	C24 C25	CAP200RP	POLAR CAPACITOR
3	47.5K	R93 R94	RES500	RESISTOR
		R95		
3	74HC4053	U9 U10 U11	DIP16	Triple 2-to-1 Analog Mux/Demux
11	100	R1 R2 R3	RES500	RESISTOR
		R4 R5 R59		
		R65 R102		
		R103 R111		
		R112		

27	100K	R39 R40 R41 R42 R47 R48 R49 R50 R52 R53 R54 R55 R56 R57 R58 R60 R61 R62 R63 R64 R67 R88 R91 R100 R101 R109 R110	RES500	RESI STOR
5	100uF 25V	C26 C27 C28 C30 C32	CAP200RP	POLAR CAPACITOR
11	221	R10 R11 R13 R14 R16 R17 R35 R36 R37 R38 R45	RES500	RESI STOR
8	353	U1 U2 U3 U4 U5 U6 U7 U8	DIP8	DUAL J FET OP AMP
3	7275-8NB	CON7 CON8 CON9	7275-8NB	DUAL 3.5mm DUAL STEREO JACK similar to 35RAPC7J
1	CON5	CON12	MOLEX5	
1	CTRL I/O	CON1	7275-8NB	DUAL 3.5mm DUAL STEREO JACK similar to 35RAPC7J
3	DUALPOT	PR1 PR2 PR3	DUALPOT	DUALPOT
3	FASTON. 25	CON6 CON10 CON11	FASTON. 25	PC MOUNT FASTON CONNECTOR
1	GND	W6	PC_PAD	MOLEX 102" PC MOUNT CRIMP CONNECTOR
1	GNDR	W2	PC_PAD	MOLEX 102" PC MOUNT CRIMP CONNECTOR
6	HEADER_2X2	JP4 JP5 JP6 JP7 JP8 JP9	4PINHEAD	HEADER 2X2
3	HEADER_2X5	JP1 JP2 JP3	10PINHEAD	HEADER 5X2
1	Jumper	R68	RES400	RESI STOR
1	LED+	W4	PC_PAD	MOLEX 102" PC MOUNT CRIMP CONNECTOR
1	LED-	W5	PC_PAD	MOLEX 102" PC MOUNT CRIMP CONNECTOR
4	RCA_RW_X2	CON2 CON3 CON4 CON5	RCA. X2	R/W AUD CONN COMMON SHELL X 2
3	SW-DIP-4	SW1 SW2 SW3	DIPSW1 TCH_4	DIPSW

Bill of Material for 12927a.Bom - OUTPUTS

Used	Part Type	Designator	Footprint	Description
12	.12uF	C25 C26 C27 C28 C29 C30 C31 C32 C33 C34 C35 C36	RAD200	CAPACITOR
6	.1 5W	R1 R2 R3 R4 R5 R6	R5W.R	RESISTOR
12	1K	R40 R43 R48 R49 R50 R53 R54 R55 R56 R57 R58 R59	RES500	RESISTOR
3	1N965	ZD2 ZD7 ZD12	DIODE.5	ZENER DIODE
9	1N4148	D1 D4 D5 D11 D14 D15 D21 D24 D25	DIODE.4	DIODE
3	1N5250B	ZD5 ZD10 ZD15	DIODE.5	ZENER DIODE
6	2.26K	R14 R16 R18 R20 R22 R24	RES500	RESISTOR
3	2N5210	Q13 Q15 Q17	T092	NPN TRANSISTOR
3	2N5401	Q1 Q3 Q5	T092	PNP TRANSISTOR
3	2N5551	Q7 Q9 Q11	T092	NPN TRANSISTOR
3	3.01K	R39 R44 R51	RES500	RESISTOR
6	6.34K	R13 R15 R17 R19 R21 R23	RES500	RESISTOR
2	10K	R38 R42	RES500	RESISTOR
6	10uF 25V	C19 C20 C21 C22 C23 C24	CAP200RP	POLAR CAPACITOR
6	11DQ09	D3 D7 D9 D13 D17 D20	DIODE.4	DIODE
4	24.3K	R37 R41 R45 R46	RES500	RESISTOR
9	33.2K	R25 R27 R29 R31 R33 R35 R47 R52 R73	RES500	RESISTOR
6	47.5K	R26 R28 R30 R32 R34 R36	RES500	RESISTOR
9	100uF 25V	C13 C14 C15 C16 C17 C18 C37 C38 C39	CAP200RP	POLAR CAPACITOR
12	100uF 100V	C1 C2 C3 C4 C5 C6 C7 C8 C9 C10 C11 C12	CAP200RP	POLAR CAPACITOR
3	133	R79 R81 R83	RES500	RESISTOR
6	402	R7 R8 R9 R10 R11 R12	RES500	RESISTOR
12	FASTON.25	CON1 CON2 CON3 CON4 CON5 CON6 CON7 CON8 CON9 CON10 CON11 CON12	FASTON.25	PC MOUNT FASTON CONNECTOR

2	GND	W5 W6	PC_PAD	MOLEX 102" PC MOUNT CRIMP CONNECTOR
3	HEADER_2X5	JP1 JP2 JP3	10PINHEAD	HEADER 5X2
3	JUMPER	R85 R87 R89	RES500	RESISTOR
9	Jumper	ZD1 ZD3 ZD4 ZD6 ZD8 ZD9 ZD11 ZD13 ZD14	DIODE. 5	ZENER DIODE
6	LM3886	U1 U2 U3 U4 U5 U6	LM3886	NATIONAL 60W POWER MODULE
9	OPEN	D2 D6 D8 D10 D12 D16 D18 D19 D22	DIODE. 4	DIODE
3	OPEN	R67 R69 R71	RES500	RESISTOR
12	PC_PAD	W7 W8 W9 W10 W11 W12 W13 W14 W15 W16 W17 W18	PC_PAD	MOLEX 102" PC MOUNT CRIMP CONNECTOR
1	V+1	W3	PC_PAD	MOLEX 102" PC MOUNT CRIMP CONNECTOR
1	V+	W1	PC_PAD	MOLEX 102" PC MOUNT CRIMP CONNECTOR
1	V-1	W4	PC_PAD	MOLEX 102" PC MOUNT CRIMP CONNECTOR
1	V-	W2	PC_PAD	MOLEX 102" PC MOUNT CRIMP CONNECTOR

Bill of Material for 12925a00.Bom

Used	Part Type	Designator	Footprint	Description
2	.033uF	C11 C12	RAD200	CAPACITOR
2	1N4002	D3 D4	DIODE. 4	DIODE
2	1N5232B	ZD1 ZD2	DIODE. 4	ZENER DIODE
4	6.34K	R1 R2 R3 R4	RES400	RESISTOR
1	40A	BR1	BRIDGE. HP	BRIDGE RECTIFIER
2	100uF 25V	C9 C10	CAP200RP	POLAR CAPACITOR
8	10000uF 63V	C1 C2 C3 C4 C5 C6 C7 C8	CAPPOWB. PCB	POLAR CAPACITOR
4	AC IN	CON1 CON2 CON3 CON4	FASTON. 25	PC MOUNT FASTON CONNECTOR
6	GND	W9 W10 W11 W12 W13 W14	PC_PAD	MOLEX 102" PC MOUNT CRIMP CONNECTOR
1	GNDA	W15	PC_PAD	MOLEX 102" PC MOUNT CRIMP CONNECTOR
2	PC_PAD	W16 W18	PC_PAD	MOLEX 102" PC MOUNT CRIMP CONNECTOR
4	SLO BLO	F1 F2 F3 F4	FUSE. 3AG	FUSE
1	TIP31C	Q1	TO220WHS	NPN POWER TRANSISTOR
1	TIP32C	Q2	TO220WHS	PNP POWER TRANSISTOR
4	V+	W1 W2 W3 W4	PC_PAD	MOLEX 102" PC MOUNT CRIMP CONNECTOR
4	V-	W5 W6 W7 W8	PC_PAD	MOLEX 102" PC MOUNT CRIMP CONNECTOR