

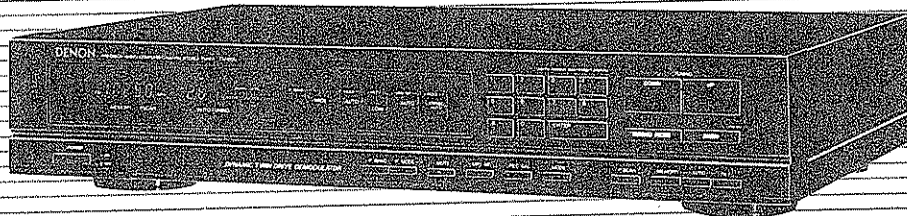
DENON

AM-FM TUNER

TU-800

OPERATING INSTRUCTIONS
MODE D'EMPLOI

High Quality AM/FM tuner
High Sensitivity and S/N
"Simple is the Best" Design Philosophy
Precise and easy tuning
High selectivity and low distortion



"SERIAL NO. _____
PLEASE RECORD UNIT SERIAL NUMBER ATTACHED TO THE REAR OF THE
CABINET FOR FUTURE REFERENCE"

SAFETY INSTRUCTIONS

1. Read Instructions – All the safety and operating instructions should be read before the appliance is operated.
2. Retain Instructions – The safety and operating instructions should be retained for future reference.
3. Heed Warnings – All warnings on the appliance and in the operating instructions should be adhered to.
4. Follow Instructions – All operating and use instructions should be followed.
5. Water and Moisture – The appliance should not be used near water – for example, near a bathtub, washbowl, kitchen sink, laundry tub, in a wet basement, or near a swimming pool, and the like.
6. Carts and Stands – The appliance should be used only with a cart or stand that is recommended by the manufacturer.
7. Wall or Ceiling Mounting – The appliance should be mounted to a wall or ceiling only as recommended by the manufacturer.
8. Ventilation – The appliance should be situated so that its location or position does not interfere with its proper ventilation. For example, the appliance should not be situated on a bed, sofa, rug, or similar surface that may block the ventilation openings; or, placed in a built-in installation, such as a bookcase or cabinet that may impede the flow of air through the ventilation openings.
9. Heat – The appliance should be situated away from heat sources such as radiators, heat registers, stoves, or other appliances (including amplifiers) that produce heat.
10. Power Sources – The appliance should be connected to a power supply only of the type described in the operating instructions or as marked on the appliance.
11. Grounding or Polarization – The precautions that should be taken so that the grounding or polarization means of an appliance is not defeated.
12. Power-Cord Protection – Power-supply cords should be routed so that they are not likely to be walked on or pinched by items placed upon or against them, paying particular attention to cords at plugs, convenience receptacles, and the point where they exit from the appliance.
- 12A. Protective Attachment Plug – The appliance is equipped with an attachment plug having overload protection. This is a safety feature. See Instruction Manual for replacement or resetting of protective device. If replacement of the plug is required, be sure the service technician has used a replacement plug specified by the manufacturer that has the same overload protection as the original plug.
13. Cleaning – The appliance should be cleaned only as recommended by the manufacturer.
14. Power Lines – An outdoor antenna should be located away from power lines.
15. Outdoor Antenna Grounding – If an outside antenna is connected to the receiver, be sure the antenna system is grounded so as to provide some protection against voltage surges and built up static charges. Section 810 of the National Electrical Code, ANSI/NFPA No. 70-1984, provides information with respect to proper grounding of the mast and supporting structure, grounding of the lead-in wire to an antenna discharge unit, size of grounding conductors, location of antenna-discharge unit, connection to grounding electrodes, and requirements for the grounding electrode. See Figure 4.
16. Nonuse Periods – The power cord of the appliance should be unplugged from the outlet when left unused for a long period of time.
17. Object and Liquid Entry – Care should be taken so that objects do not fall and liquids are not spilled into the enclosure through openings.
18. Damage Requiring Service – The appliance should be serviced by qualified service personnel when:
 - A. The power-supply cord or the plug has been damaged; or
 - B. Objects have fallen, or liquid has been spilled into the appliance; or
 - C. The appliance has been exposed to rain; or
 - D. The appliance does not appear to operate normally or exhibits a marked change in performance; or
 - E. The appliance has been dropped, or the enclosure damaged.
19. Servicing – The user should not attempt to service the appliance beyond that described in the operating instructions. All other servicing should be referred to qualified service personnel.

CAUTION

TO PREVENT ELECTRIC SHOCK DO NOT USE THIS (POLARIZED) PLUG WITH AN EXTENSION CORD, RECEPTACLE OR OTHER OUTLET UNLESS THE BLADES CAN BE FULLY INSERTED TO PREVENT BLADE EXPOSURE

ATTENTION

POUR PREVENIR LES CHOCS ELECTRIQUES NE PAS UTILISER CETTE FICHE POLARISEE AVEC UN PROLONGATEUR UNE PRISE DE COURANT OU UNE AUTRE SORTIE DE COURANT, SAUF SI LES LAMES PEUVENT ETRE INSEREES A FOND SANS EN LAISSER AUCUNE PARTIE A DECOUVERT

**FRONT PANEL
PANNEAU AVANT**

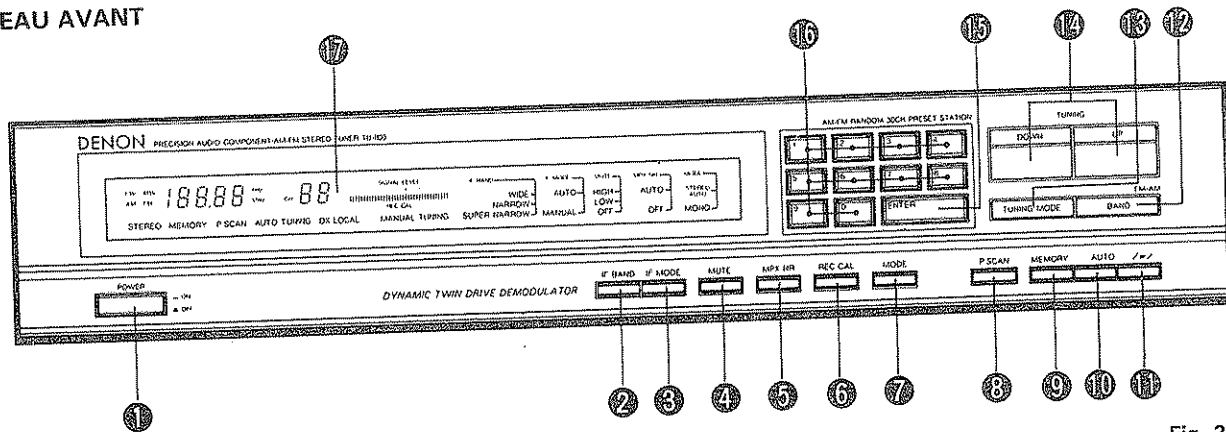


Fig. 2

As should not be connected simultaneously. If an external AM antenna is used, the AM loop antenna is disconnected.

La connexion simultanée de deux antennes FM n'est pas admise. Si une antenne externe AM est utilisée, l'antenne à cadre est débranchée.

**FOLLOW THE PROCEDURES IN THE INDICATED ORDER.
SUIVRE LES DEMARCHES DANS L'ORDRE INDIQUE.**

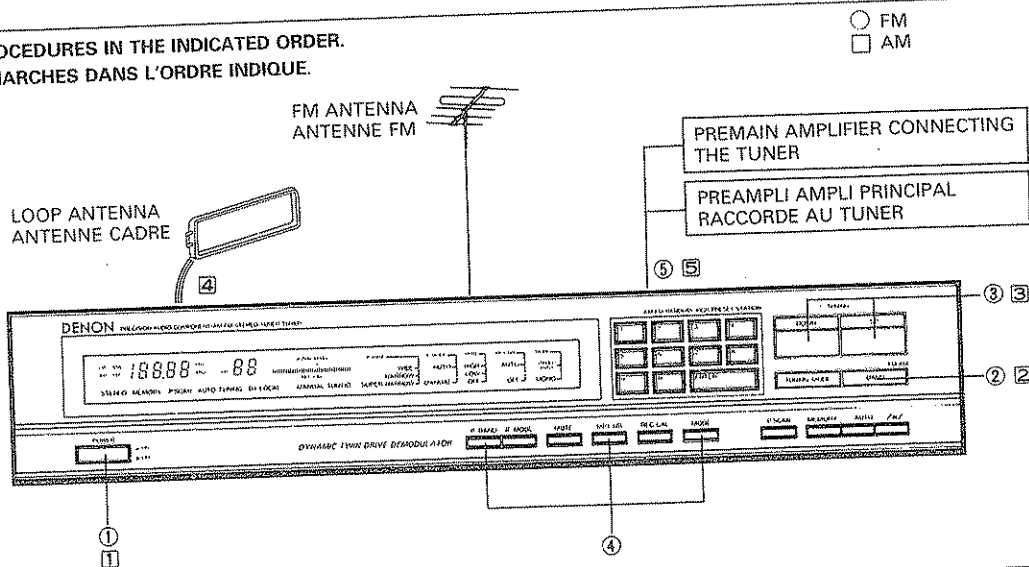


Fig. 3

CAUTION:

- Noise may be generated if a near-by television set is on during AM broadcasting reception. The tuner should be used as far away from a television as possible.
- As the lithium cell is used for backing up memory, its replacement is not required for about 5 years after shipment from the factory. If replacement is necessary, contact our service department.

PRECAUTION:

- Il y aura des bruits si un téléviseur situé à proximité est allumé lors de la réception d'émissions AM. Le tuner devrait être utilisé le plus loin possible d'un téléviseur.
- Cependant, une pile au lithium est incorporée comme alimentation de secours de la mémoire et son autonomie est d'environ 5 ans après sa sortie de nos usines. En cas de remplacement, prière de s'adresser à notre service d'entretien.

FIGURE 4
 EXAMPLE OF ANTENNA GROUNDING ACCORDING
 TO NATIONAL ELECTRICAL CODE INSTRUCTIONS
 CONTAINED IN ARTICLE 810 - "RADIO AND
 TELEVISION EQUIPMENT"

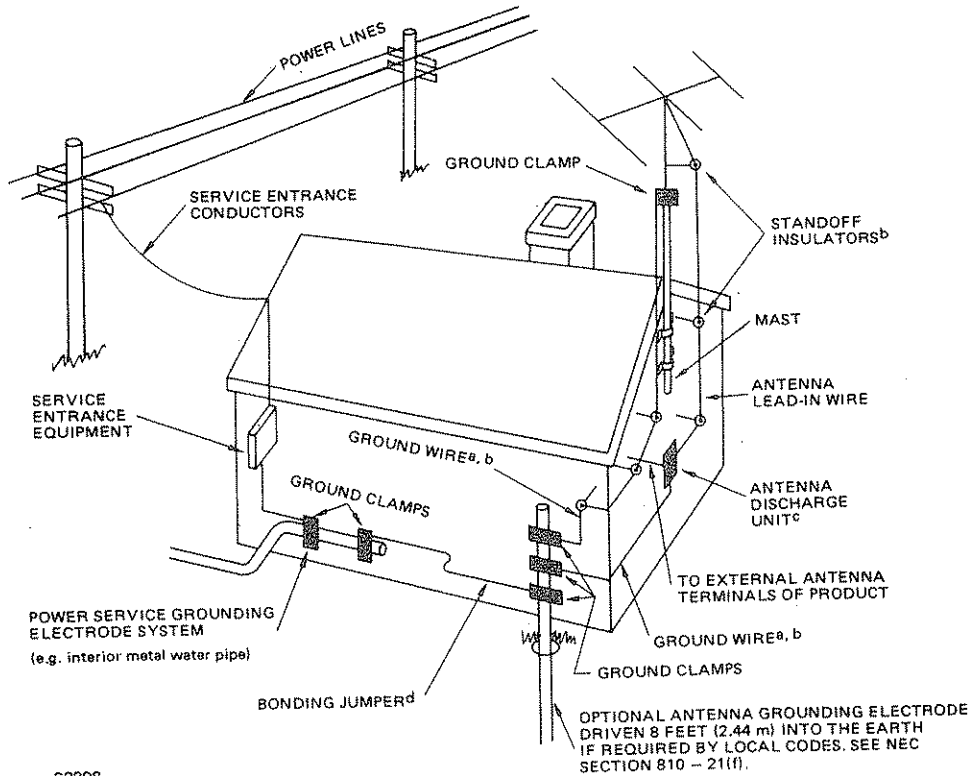


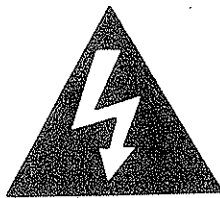
Fig. 4

^a Use No. 10 AWG (5.3 mm²) copper, No. 8 AWG (8.4 mm²) aluminum, No. 17 AWG (1.0 mm²) copper-clad steel or bronze wire, or larger, as a ground wire.

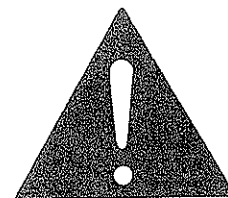
^b Secure antenna lead-in and ground wires to house with stand-off insulators spaced from 4-6 feet (1.22-1.83 m) apart.

^c Mount antenna discharge unit as close as possible to where lead-in enters house.

^d Use jumper wire not smaller than No. 6 AWG (13.3 mm²) copper, or the equivalent, when a separate antenna-grounding electrode is used. See NEC Section 810-21 (j).



CAUTION
 RISK OF ELECTRIC SHOCK
 DO NOT OPEN



CAUTION: TO REDUCE THE RISK OF ELECTRIC SHOCK, DO NOT REMOVE COVER (OR BACK). NO USER SERVICEABLE PARTS INSIDE. Refer SERVICING TO QUALIFIED SERVICE PERSONNEL.



The lightning flash with arrowhead symbol within an equilateral triangle is intended to alert the user of the presence of uninsulated "dangerous voltage" within the product's enclosure that may be of sufficient magnitude to constitute a risk of electric shock to persons.



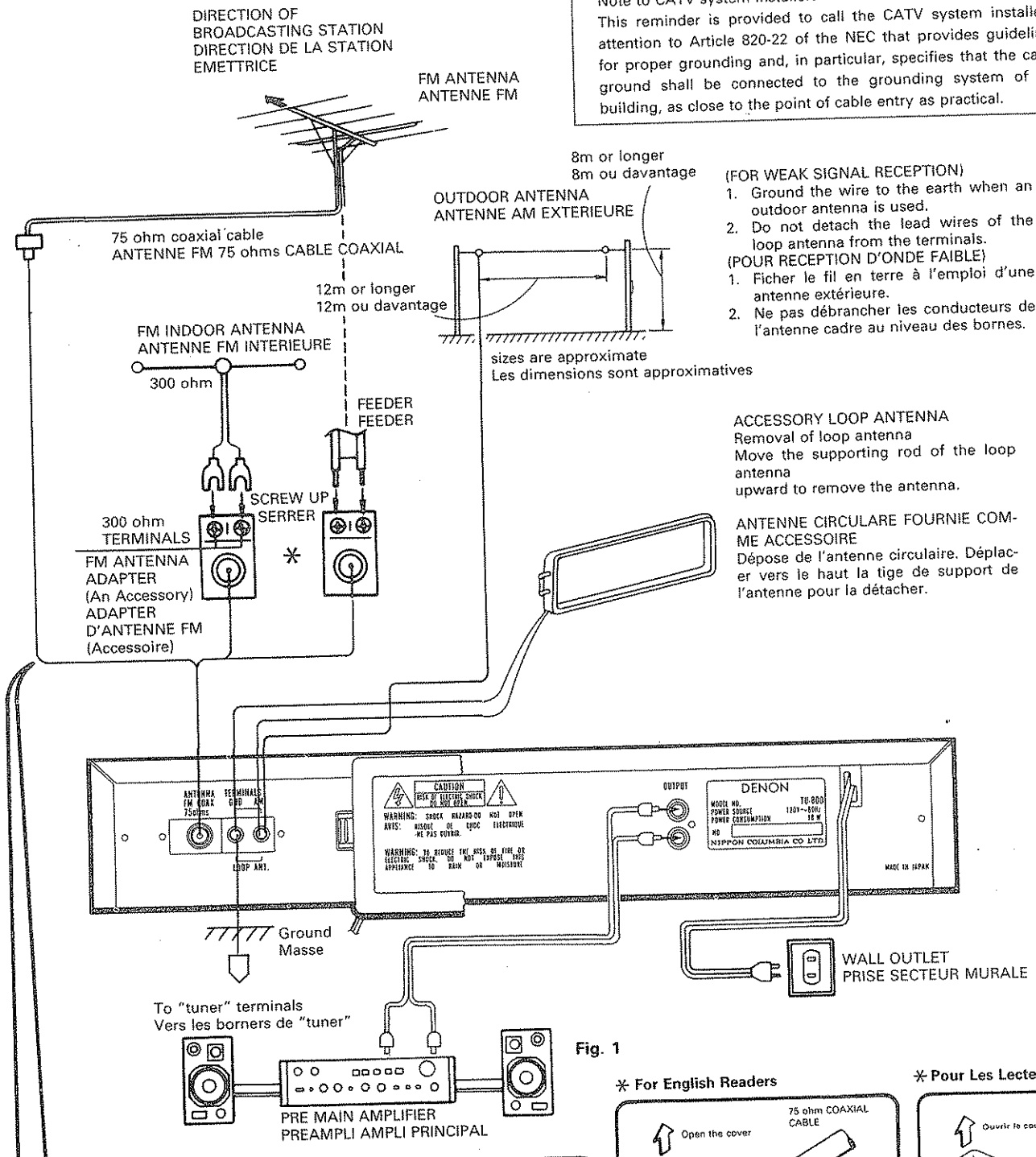
The exclamation point within an equilateral triangle is intended to alert the user of the presence of important operating and maintenance (servicing) instructions in the literature accompanying the appliance.

WARNING: TO REDUCE THE RISK OF FIRE OR ELECTRIC SHOCK, DO NOT EXPOSE THIS APPLIANCE TO RAIN OR MOISTURE.

**CONNECTIONS
CONNEXION**

USA MODEL ONLY

Note to CATV system installer:
This reminder is provided to call the CATV system installer's attention to Article 820-22 of the NEC that provides guidelines for proper grounding and, in particular, specifies that the cable ground shall be connected to the grounding system of the building, as close to the point of cable entry as practical.



- (FOR WEAK SIGNAL RECEPTION)
1. Ground the wire to the earth when an outdoor antenna is used.
 2. Do not detach the lead wires of the loop antenna from the terminals.
- (POUR RECEPTION D'ONDE FAIBLE)
1. Ficher le fil en terre à l'emploi d'une antenne extérieure.
 2. Ne pas débrancher les conducteurs de l'antenne cadre au niveau des bornes.

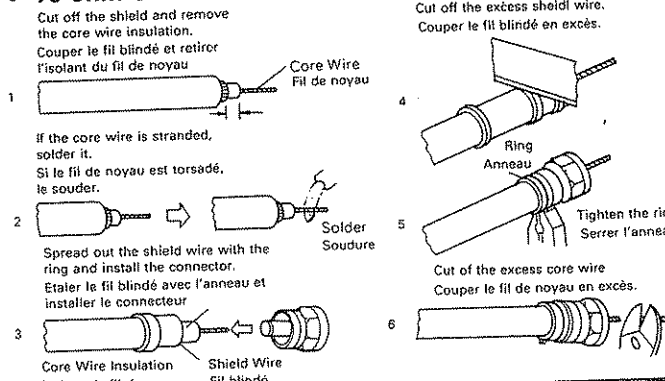
ACCESSORY LOOP ANTENNA
Removal of loop antenna
Move the supporting rod of the loop antenna upward to remove the antenna.

ANTENNE CIRCULAIRE FOURNIE COMME ACCESSOIRE
Dépose de l'antenne circulaire. Déplacer vers le haut la tige de support de l'antenne pour la détacher.

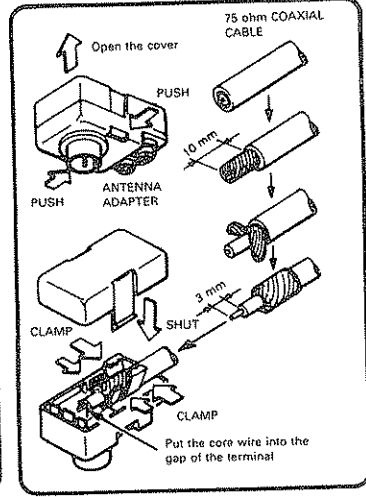
- Note:
- Two FM
 - Even if should
 - AM loop back pa
- Note:
- La conn
 - L'antenne
 - Les boi
 - toucher

Fig. 1

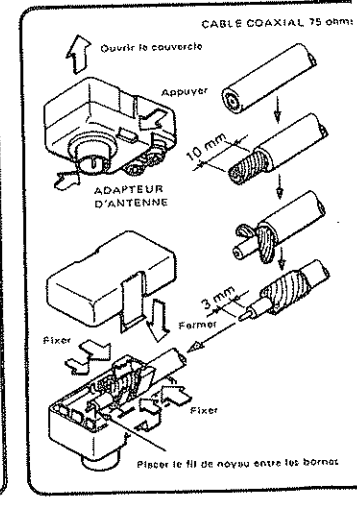
75 ohm Coaxial Terminal Borne coaxiale 75 ohms



*** For English Readers**



*** Pour Les Lecteurs Français**



DESIGNATIONS AND FUNCTIONS OF PANEL CONTROLS

- ① **POWER (Power On/Off Switch)**
The unit works 2-3 seconds after this switch is turned on.
- ② **IF BAND (IF Band Selector Button)**
Selects the selectivity of the FM intermediate frequency amplification band from 3 ranges, "WIDE", "NARROW" and "SUPER NARROW".
This switch is not effective during "Preset Scan" and "AUTO MEMORY".
- ③ **IF MODE (IF Mode Button)**
Selects "AUTO" or "MANUAL" IF Band selection.
AUTO: The optimum IF band is set automatically for each FM station being received.
MANUAL: The IF band remains fixed.
- ④ **MUTE (Mute Button)**
Switches between 3 muting levels, "OFF", "LOW" and "HIGH".
- ⑤ **MPX NR (MPX NR Button)**
Switches MPX NR "OFF" or "AUTO."
AUTO: Suppresses noise when a stereo broadcast with a weak signal is being received.
OFF: Does not carry out the above operation.
- ⑥ **REC CAL (Rec Calibration Button)**
Used to set the recording level of tape deck for FM broadcast recording. The output is adjusted to approximately half the peak level of the FM broadcast. Refer to the user's manual for your tape deck or other recording device.
- ⑦ **MODE (Mode Button)**
Switches "STEREO AUTO" or "MONO".
STEREO AUTO and MONO are set automatically by the internal microcomputer. Monaural is set when a station with a weak signal is being received, at which time this button does not operate.
- ⑧ **P. SCAN (Preset Scan Button)**
Used when checking the content of preset stations. After a station has been received for about 5 seconds, the next station in memory is scanned. Stations in memory which signal level is not strong enough to be received by Auto Stop cannot be received.
- ⑨ **MEMORY (Memory Button)**
Used to store the frequency of the station currently received.
Pressing **MEMORY**, **1**, **2**, **ENTER** in order stores the station on channel 12 in memory. Up to 30 channels of either FM or AM can be stored in memory.
- ⑩ **AUTO (Auto Button)**
Used to store the frequency of a station in memory automatically. Stations which can be stored in memory are those stations with Auto Stop set. During use, be sure to specify of the desired memory number for Auto Memory. Memory numbers 1-30 can be used.
Pressing **AUTO**, **3**, **/=**, **2**, **0**, **ENTER** in order causes stations to be stored in memory automatically from memory positions 3 to 20.
- ⑪ **/=**
This button is used to specify the memory number for Auto Memory as described in item ⑩.

- ⑫ **BAND (Band Button)**
Selects between FM or AM.
- ⑬ **TUNING MODE (Tuning Mode Button)**
Switches between Auto Tuning and Manual Tuning.
AUTO TUNING: Pressing the Up key causes the tuner to begin tuning to a higher frequency and pressing the Down key causes the tuner to begin tuning to a lower frequency.
Auto stop changes in accordance with the muting level as shown below.
Mute: Off, Low Auto stop is executed even for a comparatively weak signal.
High Auto stop is executed for strong stations.
MANUAL TUNING: The tuning is available by manual.
- ⑭ **TUNING (Tuning Buttons)**
Used to change the received frequency to a higher frequency (UP) or a lower frequency (DOWN).
- ⑮ **ENTER (Enter Button)**
Used for setting Memory, Auto Memory and Preset Call.
- ⑯ **TEN KEYS (Ten Key Buttons)**
Used to specify numbers for Memory, Auto Memory and Preset Call. Channels 1-30 can be specified using these buttons.
Preset Call Setting Method
A station that has already been preset can be fetched by the following method.
Pressing **1**, **2**, **ENTER** in order fetches the station preset in memory for channel 12.
- ⑰ **LARGE FLUORESCENT INDICATORS**
This large fluorescent indicator indicates the receiving conditions, operating condition and other information clearly.

OPERATION INSTRUCTIONS

PREPARATION

CHECKING CONNECTIONS

- Check all the connections by referring to connection diagram (Fig. 1 - 3.)
- Check that the right (R) and left (L) channels of the speakers are connected to the corresponding right (R) and left (L) plugs, and check that polarities (positive and negative) are correctly matched.
- Check that the right (R) and left (L) pins are correctly inserted to the corresponding jacks.
- Check that all the cords are firmly connected.
* Turn on the power with the POWER switch after checking all the connections.

CHECKING ANTENNA

1. Do not incorrectly connect the loop antenna. If you are not sure how to connect the loop antenna, refer to Fig. 1.
2. Use of loop antenna: Keep the loop antenna away from the main body.; If the antenna contacts a metal body, reception sensitivity is degraded, thus resulting in unclear reproduction.