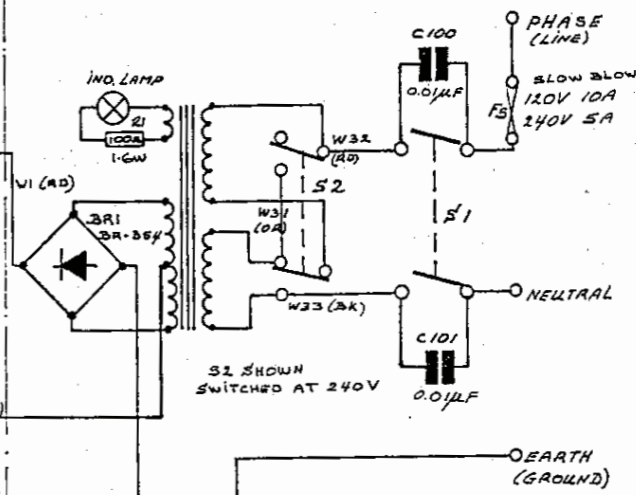


VOLTAGES SHOWN WERE MEASURED WITH A FLUKE MODEL 77 WITH NO INPUTS OR OUTPUTS CONNECTED. UNLESS STATED OTHERWISE ALL ARE D.C. VOLTS, REFERENCED TO CHASSIS AND ARE APPROXIMATE ONLY, SOME VOLTAGES WILL VARY WITH VARIATIONS IN MAINS/LINE SUPPLY.



PMF 3150 Schematic 1/4 © Perreux Industries



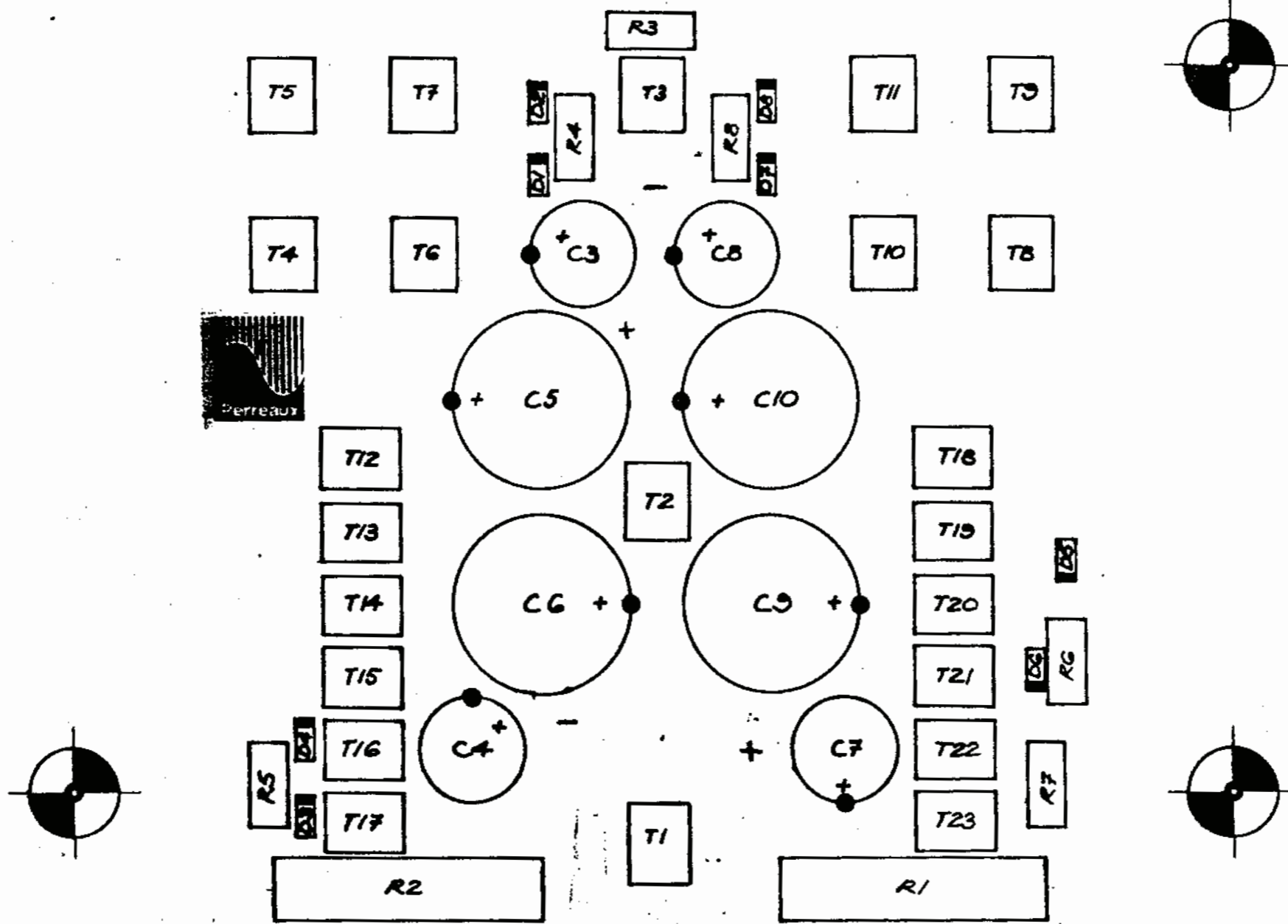
PROPRIETARY WARNING
THIS DOCUMENT PRINT OR ARTICLE CONTAINS PATENTED COPYRIGHT AND PROTECTED DESIGNS MATERIAL INFORMATION AND DATA OWNED BY PERREUX SOUND LTD AND IS NOT FOR SALE OR OTHER DISPOSITION ALTERATION DUPLICATION COPY APPLICATION OR USE EITHER WHOLLY OR PARTLY PUBLICLY PRIVATELY WHERESOEVER AND HIGHLY SOLICIT WITHOUT EXPRESSLY THE WRITTEN CONSENT OF PERREUX SOUND LTD FIRST OBTAINED. ANY UNAUTHORIZED BREACH OR ATTEMPTED BREACH OF THIS WARNING WILL BE LEGALLY ACTIONABLE.

* RESISTORS MARKED THUS ARE MOUNTED ABOVE THE SURFACE OF THE P.C.B.

16W 395 Series Resistor ADDED TO MAINS IND. 1590E.C. 16W 300 R10 RMS4D 21.5.86 ISSUE B.

PMF 3150 CIRCUIT DIAGRAM (SEE INFORMATION DRG. NO. 3/1285)

L/1284

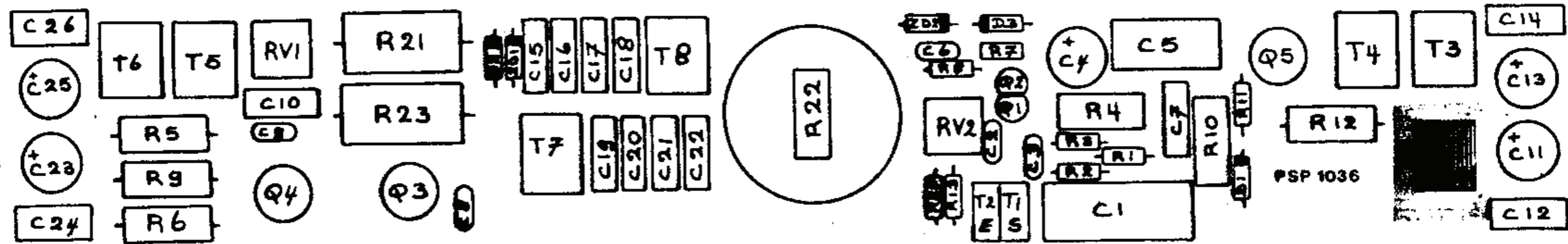
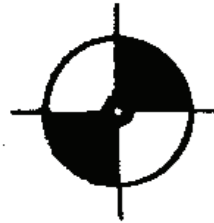
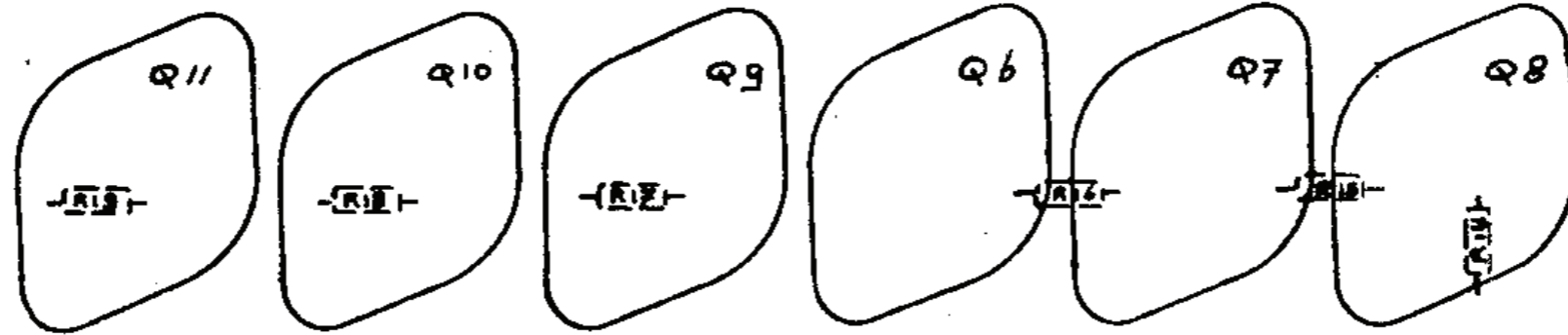
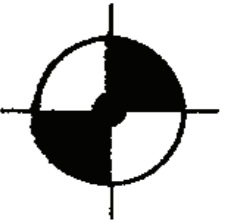
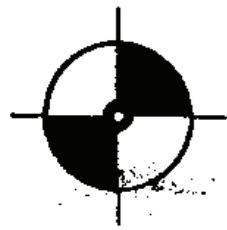


PMF 3150
 Schematic 2/4
 © Perreux Industries



DO NOT CUT OR DEFACE THIS MASTER

COMPONENT
 MAP
 POWER SUPPLY
 PMF 3150



PMF 3150
Schematic 3/4
© Perreux Industries



DONOT CUT OR DEFACE THIS MASTER.

COMPONENT
MAP
PMF 3150

| MAP CODE..... | PN..... | DESCRIPTION..... | QTY/ ASSY * |
|---------------|---------|-------------------------------|----------------|
| | AB01100 | PARENT 3150 P/SUPPLY PCB ASSY | 0 |
| C3, 4, 7, 8 | CBJE100 | CAP EL PCM 220MF 100V | 4 |
| C5, 6, 9, 10 | CCKA100 | CAP EL CAN 1000MF 100V | 4 |
| D1-8 | DPD1 | DIODE POWER 1N4004 400V 1A | 8 |
| | FNR4 | NUT BRASS HEX M4 (*7MM) | 23 |
| | LM575 | LABEL PRODUCTION STAGE | 1 |
| | LX192 | LABEL CAP BLK/BLUE 13mm | 4 |
| | LX193 | LABEL CAP BLK/BLUE 26mm | 4 |
| | PC01044 | 3150B PSU BOARD | 1 |
| R4, 7 | RFE180 | RES 2W MF/MX 180E | 2 |
| R3, 5, 6, 8 | RFK6-8 | RES 2W MF/MX 6.8KE | 4 |
| R1, 2 | RLK4-7 | RES 10W WW 4.7KE | 2 |
| | TMB21 | TERM PCM NKL/P BRASS 6 LEGS | 23 |
| | TMB22 | TERM SHROUD BLACK /TMB21 | 7 |
| | TMB23 | TERM SHROUD BROWN /TMB21 | 2 |
| | TMB24 | TERM SHROUD RED /TMB21 | 7 |
| | TMB25 | TERM SHROUD ORANGE /TMB21 | 2 |
| | TMB27 | TERM SHROUD GREEN /TMB21 | 1 |
| | TMB28 | TERM SHROUD BLUE /TMB21 | 2 |
| | TMB29 | TERM SHROUD GREY /TMB21 | 2 |

SERVICING SLB LIST

| MAP CODE..... | PN..... | DESCRIPTION..... | QTY/ ASSY * |
|---------------|---------|-------------------------|----------------|
| | TMB29 | TERM SHROUD GREY /TMB21 | 1 |

| MAP CODE..... | PN..... | DESCRIPTION..... | QTY/ ASSY |
|---------------------------------|---------|------------------------------------|--------------|
| | AB01099 | PARENT 3150 OUTPUT PCB ASSY | 0 |
| C11, 13, 23, 25 | CBHA160 | CAP EL PCM 10MF 160V | 4 |
| C4 | CBJA50 | CAP EL PCM 100MF 50V | 1 |
| C6 | CDAF6 | CAP DISC 3.3PF 3-900V | 1 |
| C9 | CDAN6 | CAP DISC 6.8PF 3-900V | 1 |
| C2 | CDBA6 | CAP DISC 10PF 3-900V | 1 |
| C28, 30 | CDBF6 | CAP DISC 27PF 3-900V | 2 |
| C8, 29 | CDBK6 | CAP DISC 47PF 3-900V | 2 |
| C3 | CDCF1 | CAP DISC 270PF 100V | 1 |
| C7, 10, 12, 14, 24, 26 | CWFA250 | CAP WIMA 0.1MF 250V 10MM MKS4 20% | 6 |
| C5 | CWGC63 | CAP WIMA 1.5MF 63V 15MM MKS4 20% | 1 |
| C1 | CWGN63 | CAP WIMA 6.8MF 63V 22.5MM MKS4 20% | 1 |
| C15, 16, 17, 18, 19, 20, 21, 22 | CZEA400 | CAP PHIL 0.01MF 400V | 8 |
| D1, 2, 3 | DS1 | DIODE SIG 1N4148 75RV A2 | 3 |
| ZD1, 2 | DZC9 | DIODE ZENER 9.1V 500mW | 2 |
| | FAS39 | SPACER BK PLAS TO-5 9.5*3MM | 3 |
| | FNR4 | NUT BRASS HEX M4 (*7MM) | 6 |
| | GGL9 | GLUE LOCTITE 495 5G TUBE | 0 |
| | HHF5 | HEATSINK TO-5 BLACK WITH FINS | 3 |
| L1 | KQ313 | CHOKER TD313 COIL SPEC'S (3150) | 1 |
| | LM575 | LABEL PRODUCTION STAGE | 1 |
| | PC01036 | 18/3150 OUTPUT PCB | 1 |
| Q1, 2 | QSJ93 | TSTR P TO-92 JE9092 G3 | 2 |
| Q5 | QSS1 | TSTR P TO-5 ST-5151 | 1 |
| Q3, 4 | QSS4 | TSTR N TO-5 ST-4154 | 2 |
| R11 | RBE100 | RES W33 MF 100E | 1 |
| R14, 15, 16, 17, 18, 19 | RBE220N | RES W33 MF 220E-NO C/B | 6 |
| R7 | RBK1-8 | RES W33 MF 1.8KE | 1 |
| R3 | RBK2-2 | RES W33 MF 2.2KE | 1 |
| R13, 20 | RBK47 | RES W33 MF 47KE | 2 |
| R1 | RBK470 | RES W33 MF 470KE | 1 |
| R2, 8 | RBK56 | RES W33 MF 56KE | 2 |
| R22 | RFE10 | RES 2W MF/MX 10E | 1 |
| R12 | RFE100 | RES 2W MF/MX 100E | 1 |
| R9 | RFE270 | RES 2W MF/MX 270E | 1 |
| R10 | RFK22 | RES 2W MF/MX 22KE | 1 |
| R5, 6 | RFK3-3 | RES 2W MF/MX 3.3KE | 2 |
| R4 | RFK39 | RES 2W MF/MX 39KE | 1 |
| R23 | RNE10 | RES 5W NI 10E | 1 |
| R21 | RNE4-7 | RES 5W NI 4.7E | 1 |
| RV2 | RPK100N | POT PRESET 100K VTP NOBLE | 1 |
| RV1 | RPK1N | POT PRESET 1K VTP NOBLE | 1 |
| | TMB21 | TERM PCM NKL/P BRASS 6 LEGS | 6 |
| | TMB22 | TERM SHROUD BLACK /TMB21 | 1 |
| | TMB23 | TERM SHROUD BROWN /TMB21 | 1 |
| | TMB24 | TERM SHROUD RED /TMB21 | 1 |
| | TMB25 | TERM SHROUD ORANGE /TMB21 | 1 |
| | TMB26 | TERM SHROUD YELLOW /TMB21 | 1 |

