

Stereophonic



THE FISHER

400-CX

SERVICE

MANUAL



MODEL 400-CX

CHASSIS SERIAL NUMBERS
FROM 10001 TO 19999 INCLUSIVE

PRICE: \$1.00

FISHER RADIO CORPORATION • NEW YORK

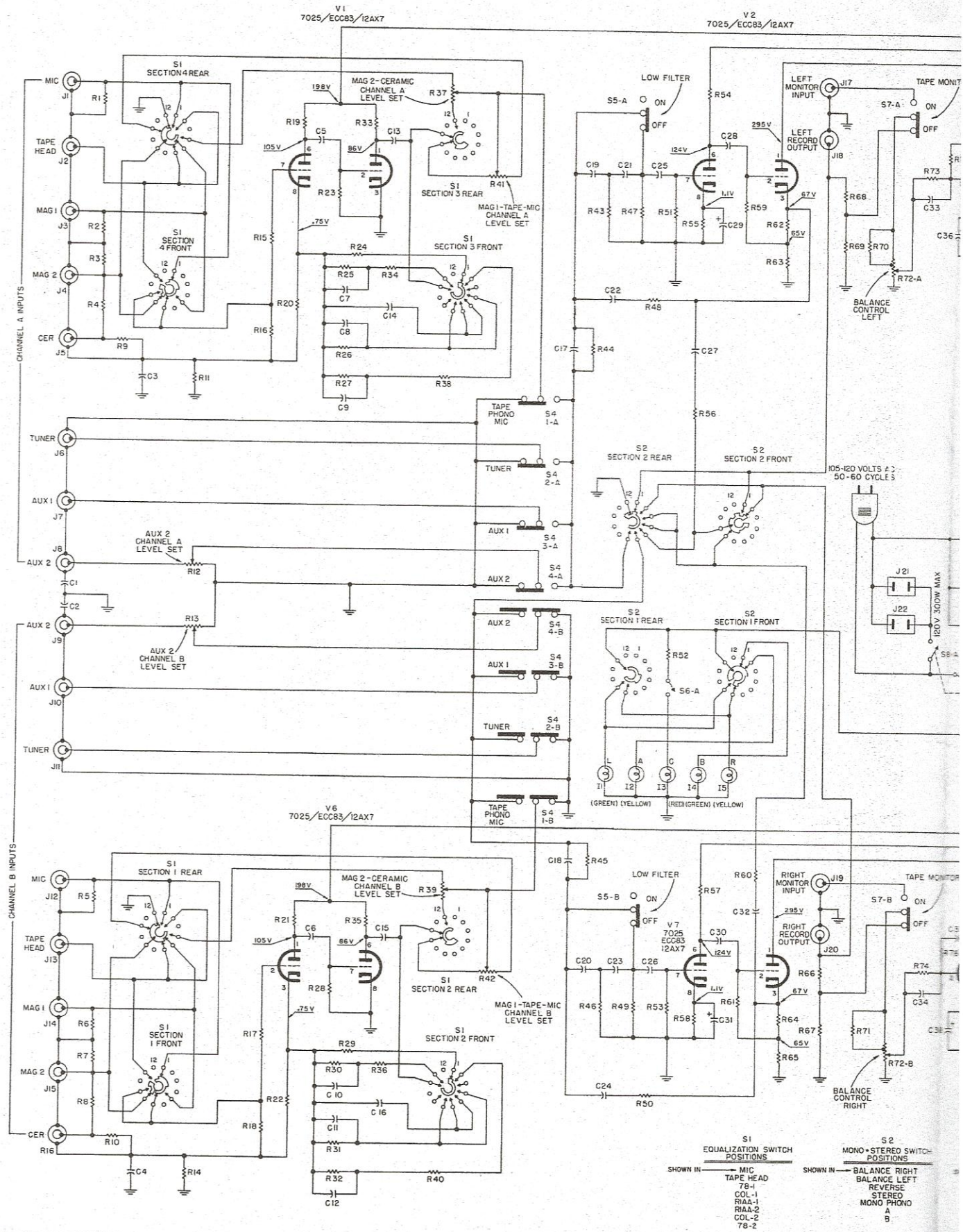


CHASSIS SERIAL NUMBERS
FROM 10001 TO 19999

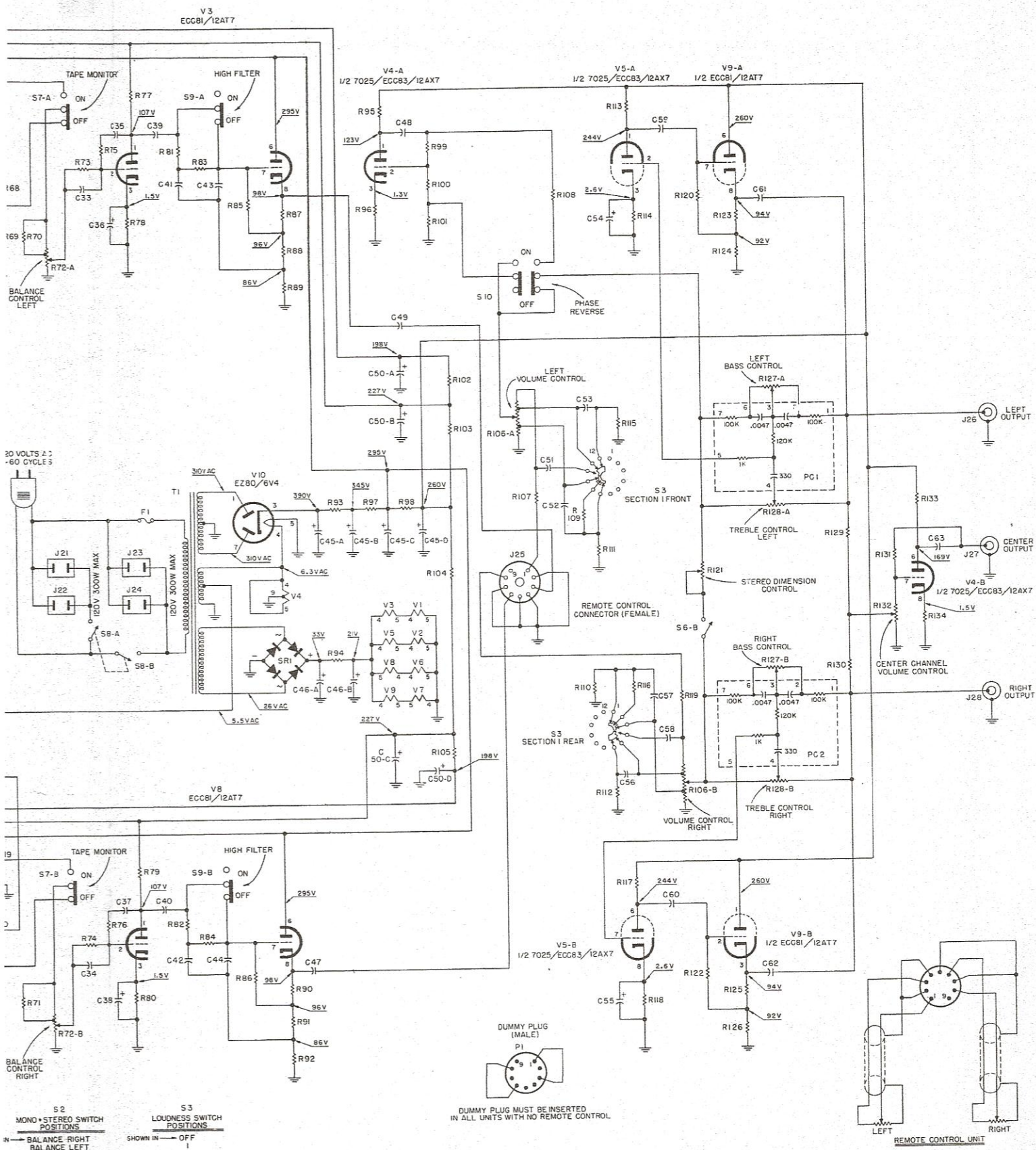
THE FISHER 400-CX



SCHEMATIC DIAGRAM



RESISTORS	R1 TO R8	R9 TO R10	R11 TO R14	R15 TO R18	R19 TO R22	R23 TO R32	R33 TO R36	R37 TO R40	R41 TO R42	R43 TO R46	R47 TO R50	R51 TO R53	R54 TO R58	R59 TO R61	R62 TO R65	R66 TO R67	R68 TO R71	R72 TO R74	R73 TO R75
CAPACITORS	C1 TO C2	C3 TO C4	C5 TO C6	C7 TO C12	C13 TO C16	C17 TO C24	C25 TO C26	C27 TO C31	C32 TO C33	C34 TO C36	C37 TO C38	C39 TO C40	C41 TO C42	C43 TO C44	C45 TO C46	C47 TO C48	C49 TO C50	C51 TO C52	C53 TO C56



S2 MONO • STEREO SWITCH POSITIONS
 N → BALANCE RIGHT
 BALANCE LEFT
 REVERSE
 STEREO
 MONO PHONO
 A
 9

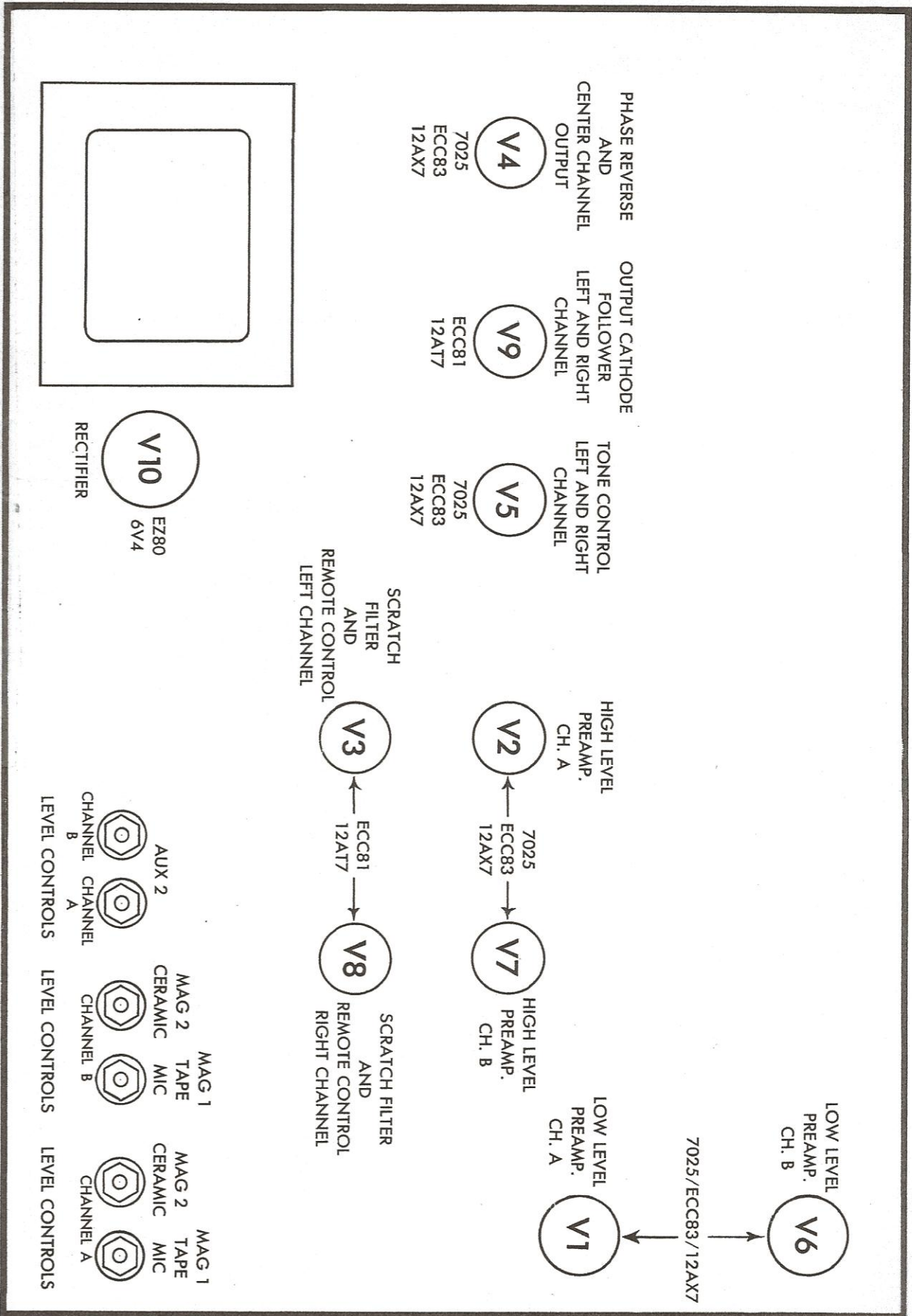
S3 LOUDNESS SWITCH POSITIONS
 SHOWN IN → OFF
 2

ALL SLIDE SWITCHES SHOWN IN THE "OFF" POSITION.

P 795 SCHEMATIC AW # 1698

R68 TO R71	R72	R73 R74	R75 R76	R77 TO R80	R81 R82	R83 R84	R85 R86	R87 TO R92	R93 R94	R95 R96 R97	R98	R99 TO R105	R106-A R107	R108 R109 R110	R111 R112	R113 TO R119	R119 R120 R121 R122	R123 TO R126	R127 R128	R129 R130	R131 R132	R133 R134	C63	
C33	C34	C35	C36	C37 TO C38	C39 C40	C41 C42	C43 C44	C45 TO C47	C45 C46 C47	C48 C49 C50	C48 C49 C50	C49	C51 C52	C53	C54 C55 C56	C57 TO C60	C61 C62	C61 C62						

TUBE LAYOUT





FISHER RADIO CORPORATION • NEW YORK



N-795-104

Printed in U.S.A.

507W12C-129