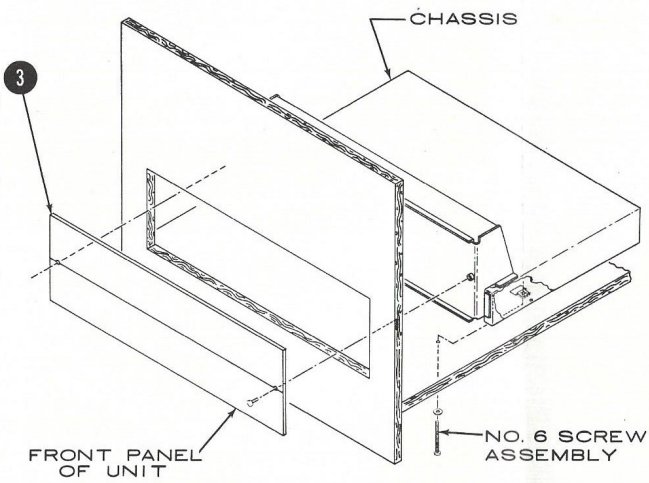
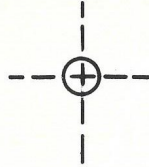


From panel. On tuners or
g dial (2 screws). Then
(2 screws). Insert unit into
carefully guiding the con-
out. Center the unit in the
ront panel. From the rear
it toward you gently, until
nst the front of the console,
rasher against the head of
rd. hd. screws provided,
ottom side of the shelf into
es drilled previously. It
he unit slightly to the left
lear access for the screws.
ght, tighten them to secure
ers or receivers, remount
removed. Then replace all
ts.

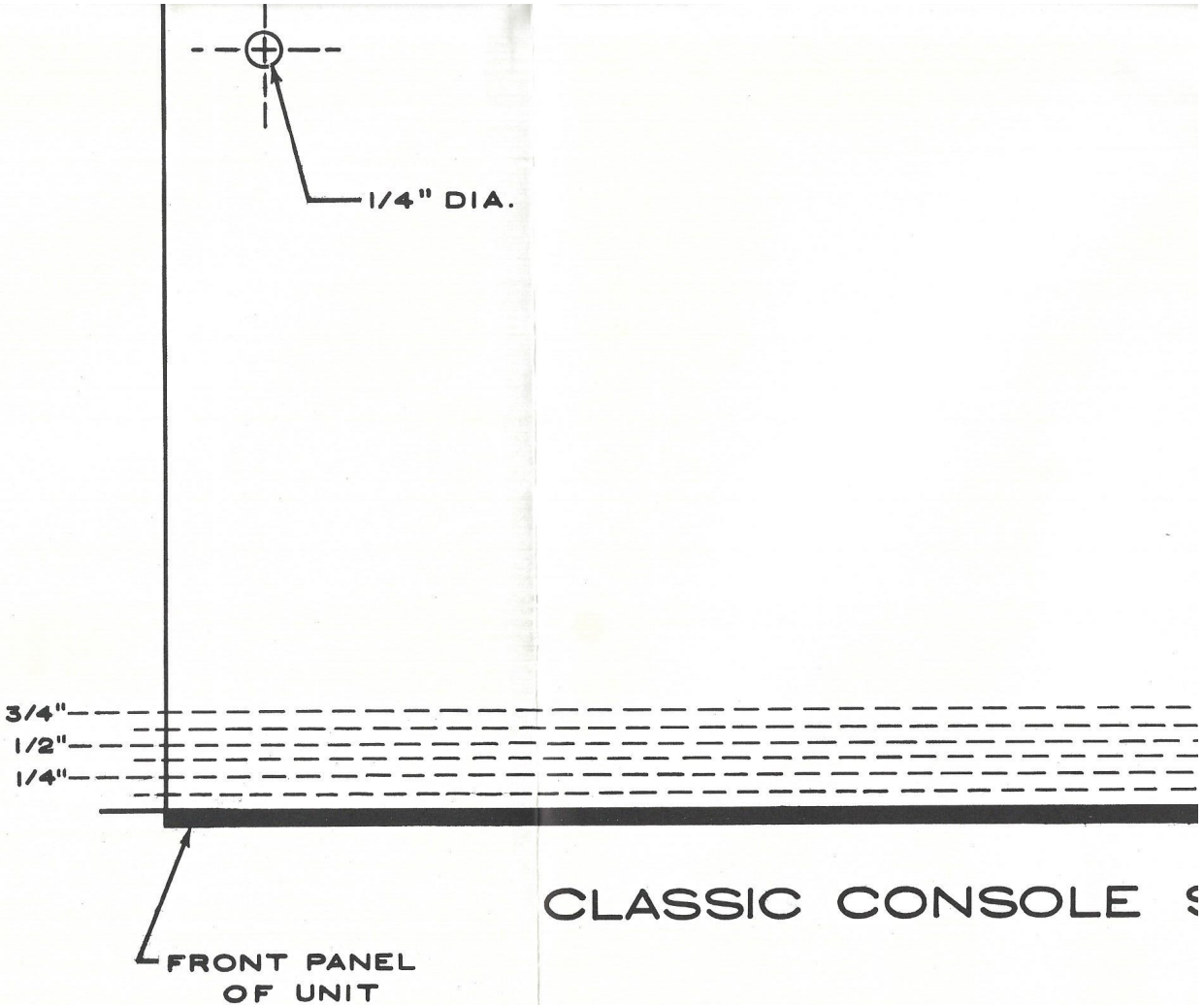
sole panel template along
n the inside of the console
avy guide lines coinciding
on the shelf template, and
nters of the 3/8" dia. holes
l cut-out areas to be drilled
red. Drill from the REAR
-drill. FROM THE FRONT
our guide), drill the 3/8"
f the wood panel, scribe a
ential to the four drilled
uld correspond very closely
sfully cut out the rectangle
nall blade to start accurate-
way rough spots or excess



STRUCTIONS



HELP TEMPLATE

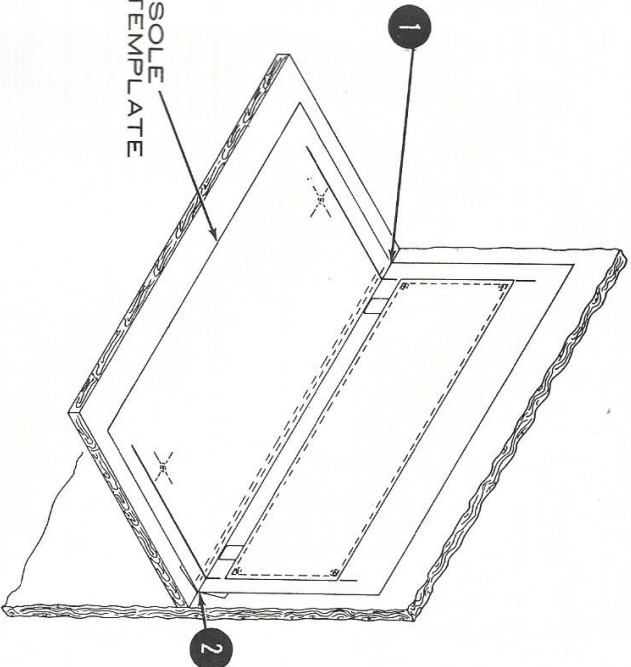


GENERAL

1. Mount horizontally on a well-braced shelf. The stock thickness of the wood panel may not exceed 3/4".
2. Do not remove feet for mounting. Air must be allowed to enter through the perforations in the bottom plate to avoid overheating.
3. Any shelf above the unit should be spaced 5 inches away, certainly not less than 3 inches. Allow some space on each side of the unit, if possible.
4. Leave the back of the cabinet entirely open, if possible. If not, make holes at the top and bottom of the back for air circulation.

Fold back Console Shelf Template at dotted line corresponding to stock thickness of console front panel (i.e., 3/8", 1/2", 5/8", etc.). Position on the shelf as shown and tape in place. Mark the centers of the two 1/4" dia. holes indicated, to be drilled after the template is removed.

CONSOLE FRONT
PANEL TEMPLATE



Remove all knob receivers, dismount the console front panel from the rear cut-out and re-mount the front panel flush against the shelf. Now place one No. 6 flat head screw in each of two No. 6-32 x 1/2" holes and insert them from the back of the console. Tighten the two 1/4" diameter screws until they are snug. When both screws have been tightened, turn the unit to the right in order to allow the knob receivers to be inserted into their control slots. When both screws have been tightened, turn the unit to the left in order to allow the knob receivers to be inserted into their control slots.

Fold back the console front panel as shown, with the heavy guide line in the center of the dot. Mark the centers of the two 1/4" dia. holes. On the front side of the console, externally, mark the dimensions of the holes. Now, with a sharp saw, using a template, cut the 3/8" holes. Fill the holes with wood putty.

CONSOLE MOUNTING IN SHELF TEMPLATE