



ADCOM[®]
CD PLAYER
GCD-575

WARNING

To reduce the risk of fire or electric shock, do not expose this appliance to rain or moisture.

| | | |
|--|---|---|
|  | CAUTION RISK OF ELECTRIC SHOCK DO NOT OPEN |  |
| Caution : To reduce the risk of electric shock, do not remove cover (or back). No user serviceable parts inside. Refer servicing to qualified service personnel. | | |

EXPLANATION OF GRAPHIC SYMBOLS

The lightning flash with arrowhead symbol, within an equilateral triangle, is intended to alert the user to the presence of unisolated "dangerous voltage" within the product's enclosure that may be of sufficient magnitude to constitute a risk of electric shock to persons.



The exclamation point within an equilateral triangle is intended to alert the user to the presence of important operating and maintenance (servicing) instructions in the literature accompanying the appliance.



NOTICE

This equipment generates and uses radio frequency energy and if not installed and used properly, that is, in strict accordance with the manufacturer's instructions, may cause interference to radio and television reception. It has been type tested and found to comply with the specifications in Subpart J of Part 15 of FCC Rules, which are designed to provide reasonable protection against such interference in a residential installation. However, there is no guarantee that interference will not occur in a particular installation. If this equipment does cause interference to radio or television reception, which can be determined by turning the equipment off and on, the user is encouraged to try to correct the interference by one or more of the following measures:

- reorient the receiving antenna
- relocate the CD player with respect to the receiver
- move the CD player away from the receiver
- plug the CD player into a different outlet so that the CD player and receiver are on different branch circuits.

If necessary, the user should consult the dealer or an experienced radio/television technician for additional suggestions. The user may find the following booklet prepared by the Federal Communications Commission helpful: "How to Identify and Resolve Radio - TV Interference Problems" This booklet is available from the US Government Printing Office, Washington, D.C., 20402, Stock No. 004-000-00345-4.

Caution — Use of controls or adjustments or performance of procedures other than those specified herein may result in hazardous radiation exposure.

Caution — To prevent electrical shock, do not use this polarized plug with an extension cord, receptacle, or other outlet unless the blades can be fully inserted to prevent blade exposure.

Attention — Pour prévenir les chocs électriques ne pas utiliser cette fiche polarisée avec un prolongateur, une prise de courant ou une autre sortie de courant, sauf si les lames peuvent être insérées à fond sans en laisser aucune partie à découvert.

TABLE OF CONTENTS

| | | | |
|----------------------------------|----|--------------------------------|----|
| Features | 3 | Playing a Disc | 14 |
| Introduction | 4 | Timer Playing | 15 |
| Unpacking | 4 | Caring for Your GCD-575 | 15 |
| Installing the GCD-575 | 5 | Precautions | 15 |
| Connecting the GCD-575 | 6 | In Case of Difficulty | 16 |
| Controlling the GCD-575 | 7 | Servicing | 17 |
| Remote Control Transmitter | 13 | Technical Specifications | 18 |

FEATURES

- Very-low-impedance output (100 Ω)
- Dual digital-to-analog, 16-bit linear converters
- Triple-beam laser format
- 176.4kHz, four-times-oversampling filters
- Low-group-delay digital and innovative analog filters
- Unique, selectable Analog Frequency/Phase Contouring circuitry
- High-grade-contact muting relays
- Direct-coupled audio amplifiers employ very fast, linear-gain semiconductors with circuitry based on GFP-555
- OCL outputs with virtually no DC offset
- Fixed and variable outputs usable simultaneously
- Direct digital output
- Very-high-quality variable headphone output
- Selectable absolute polarity switch
- Outstanding interchannel phase coherence
- Reversible cast-metal feet with built-in iso-points
- Front-drawer loading
- Plays 3-inch CDs with no adaptor required
- Programs up to 24 tracks in any sequence
- Repeats disc, track, program or any selected sequence or phrase
- Fast-forward and fast-reverse scans are audible
- Displays simultaneously total tracks up to 20, track being played, programmed tracks, tracks to be played
- Timer displays elapsed time of track being played, total time elapsed on disc, time remaining on track, time remaining on disc

IMPORTANT NOTICE

The GCD-575 is covered by a valuable limited Warranty, which assures you of factory-sponsored service during its applicable period. The considerable benefits of this Warranty and its few reasonable limitations are spelled out in the enclosed multi-part Warranty Card. Should you ever have any questions about this product or wish to be advised of future modifications and accessories for it, it will be indispensable for us to have the return portion of the Warranty Card on file. Please be sure to fill out and return the appropriate portion of the Warranty Card to ADCOM Service Corp., being sure to fill in the serial number of the unit which you will find printed on the rear panel of the unit, and all other pertinent information. If the serial number has already been preprinted on the Warranty Card, please make certain that this number matches exactly the serial number on the rear panel of the unit. Should you find any discrepancy, please notify us immediately so that your rights under the Warranty may be protected.

INTRODUCTION

Please read thoroughly the operating instructions for the GCD-575 before connecting or attempting to operate this unit. For your own benefit, follow all the instructions in this manual and save it for future reference.

Your ADCOM GCD-575 incorporates some of the most advanced thinking in compact disc player design. Its superior performance is the result of a thorough re-evaluation of all factors affecting performance in a compact disc player. The installation and operation of the GCD-575 are described in the following pages. We sincerely hope that you will value and enjoy the attention we have given its design and construction. This manual, and your familiarity with it, is essential to the safe and correct operation of the GCD-575. Please read it carefully to fully understand all the features and functions offered and how they can be best used in your system.

UNPACKING

Before each GCD-575 left the factory, it was carefully inspected for physical imperfections as a routine part of ADCOM's systematic quality control. This, along with full operational and mechanical testing, should insure a product flawless in both appearance and performance. After you have unpacked the GCD-575, inspect it for physical damage. Save the shipping carton and all packing materials, as they are intended to reduce to a minimum the possibility of transportation damage, should the product ever need to be shipped again. In the unlikely event damage has occurred, notify your dealer immediately and request the name of the carrier so that a written claim to cover shipping damage can be initiated.

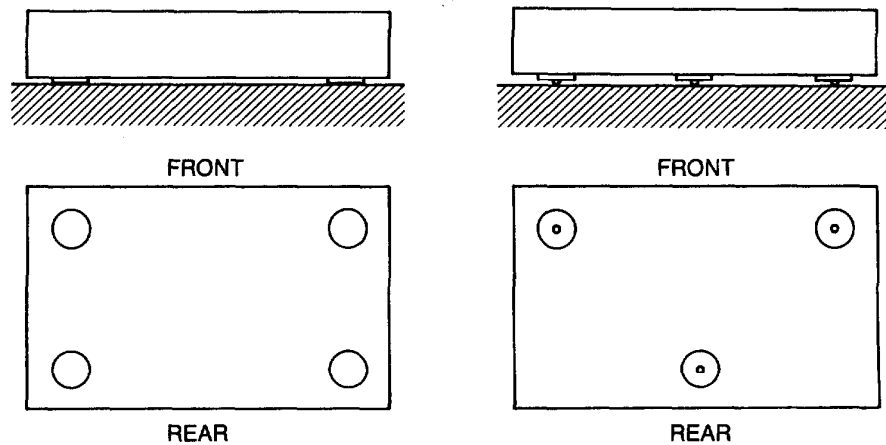
THE RIGHT TO ANY CLAIM AGAINST A PUBLIC CARRIER CAN BE FORFEITED IF THE CARRIER IS NOT NOTIFIED PROMPTLY IN WRITING AND IF THE SHIPPING CARTON AND PACKING MATERIALS ARE NOT AVAILABLE FOR INSPECTION. SAVE ALL PACKING MATERIALS UNTIL THE CLAIM HAS BEEN SETTLED.

INSTALLING THE GCD-575

Although the GCD-575 does not generate much heat, you will insure its long-term trouble-free operation if you keep it away from external sources of heat, such as radiators or hot-air ducts, and provide reasonable ventilation. The GCD-575 should never be placed with other heat-producing components in a cabinet or enclosure lacking free air-flow.

For use in professional installations, the GCD-575 may be mounted in a standard 19-inch rack using the optional RM-3 rack mount adaptors available through ADCOM dealers.

The GCD-575 is provided with reversible feet making several types of support configurations possible. As shipped from the factory the four feet are installed with their "flat" surface out for more conventional installation. The other surface of the feet is cast with built in iso-points. The feet can be used in the most common format (four feet) or in a unique "tripod" configuration for optimal support of the chassis (see diagram below; provisions have been made on the bottom panel of the GCD-575 for the three-foot configuration). There are four possible mounting arrangements for the feet. We suggest you use whichever is best suited for your particular application.



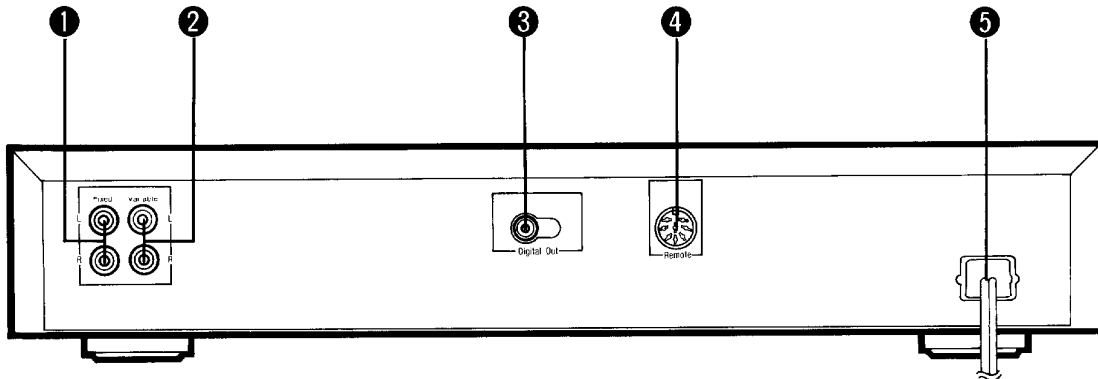
There is no universally "best" configuration. A small amount of experimentation will easily determine which is best for your particular application, iso-points or flat, three or four feet.

To reverse or change the position of the feet, first make certain that power to the GCD-575 is off, and then use a Phillips screwdriver. We recommend that you install the GCD-575 on a firm surface or cabinet not easily susceptible to footfalls or vibration. Please note that the iso-points can scratch or dent certain surfaces, so care with their use is indicated.

CONNECTING THE GCD-575

The performance of the GCD-575 depends on the quality of the interconnection of both the Compact Disc player and its associated equipment. All the output signal connections should be made only with high-quality, low-loss audio cables, such as the one supplied with the GCD-575. The FIXED and VARIABLE outputs, as well as the LEFT and RIGHT channels are clearly labelled.

NOTE : Whenever connections to or from the GCD-575 are being made, be certain all associated components are turned OFF.



Rear Panel Connections

OUTPUT

FIXED ①

The decoded audio signal is available at these sets of outputs at a level compatible with all preamplifiers, tuner/preamps, receivers, etc. Simply connect these outputs to any of the high-level inputs of your preamp or receiver (CD, AUX, TUNER, etc.) using the cable provided.

VARIABLE ②

The decoded audio signal is also available at these outputs; the level, however, can be adjusted using the VOLUME control ⑤ on the front panel (the VOLUME control ④ will have no effect on the FIXED outputs ①). The VARIABLE outputs will be most useful in instances where you want to bypass the preamplifier in your system and drive your power amplifier directly. In such an instance, the VOLUME control ⑤ can be used to set the desired volume levels. The VARIABLE outputs can be used also to drive a second system, or used when you want to adjust the CD playback level to match those of other sources in your system (tuner, cassette deck, etc.). They may be connected to any high-level input in your system.

Please note that both the VARIABLE outputs ② and PHONES output ④ share part of the internal circuitry of the GCD-575 and it is NOT recommended that BOTH be used simultaneously.

NOTE : The very-low output impedance of the FIXED and VARIABLE outputs (100 Ω) permits you to use long cables between them and the rest of your system without incurring losses in the signal or hum or interference pick-up. In addition, the low output impedance makes the GCD-575 much more insensitive to load and cable variations than is the case with other players.

DIGITAL OUT ③

The signal from the CD being played is available in digital form at this output. The signal at this output is not affected by the front panel VOLUME control ④. This output is meant for use, where desired, with an external digital-to-analog converter or an amplifier or preamplifier with the necessary digital conversion circuits built in.

REMOTE ④

DIN jack for use with other ADCOM remotely controlled components. By connecting the GCD-575 through this jack and a special accessory cable to other ADCOM components, all the remote functions of the GCD-575 will be controlled through the main ADCOM remote component.

AC POWER/LINE ⑤

The polarized AC line cord should be connected to the receiver's or preamplifier's auxiliary AC outlet (switched or unswitched) or directly into a standard wall outlet.

CONTROLLING THE GCD-575

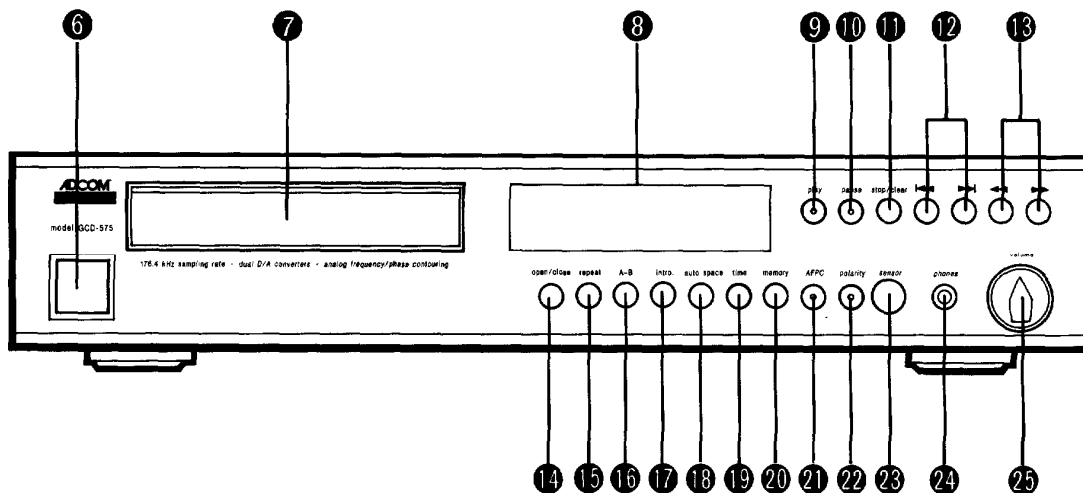
Please refer to the diagram below of the front panel of the GCD-575 as well as the diagram of the Remote Control Transmitter AR-575 (on page 13) to identify the controls and their functions.

POWER ⑥

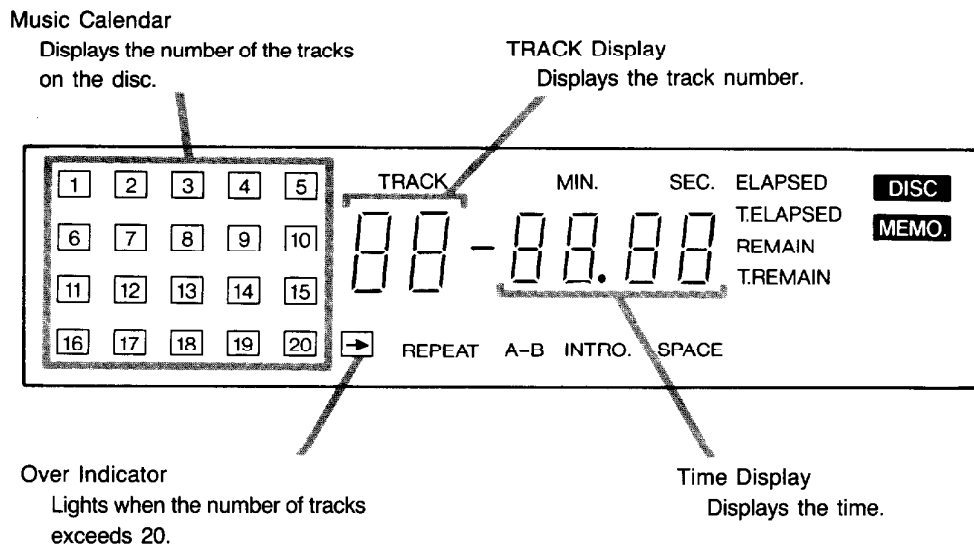
The push-on/push-off power switch permits you to turn on, and off, power to the GCD-575.

DISC TRAY ⑦

Will accept both standard and 3-inch CDs without an adaptor. Place CD, label side up, in tray well. Press OPEN/CLOSE button ⑭ or ⑮ to open or close the tray.



DISPLAY PANEL 8



DISC : Indicates the disc is properly set.
MEMO. : Indicates a track is programmed.

ELAPSED : Lights when the Time Display indicates the elapsed time from the beginning of the track being played.
T.ELAPSED : Lights when the Time Display indicates the elapsed time from the beginning of the disc.
REMAIN : Lights when the Time Display indicates the remaining time in the track being played.
T.REMAIN : Lights when the Time Display indicates the remaining time on the disc.

To change the time display mode press the TIME button 19 successively until the desired time display mode appears.

NOTE : The playing times listed in the booklet accompanying a CD and the time shown in the GCD-575's Time Display may differ slightly. This discrepancy may occur if the spacings and time between tracks are not included in the calculations shown in the booklet. When programming the GCD-575, always use the timings shown in the GCD-575's Time Display.

REPEAT : Indicates that the Repeat Play function is engaged.
A-B : Indicates that the A-B Repeat Play function is engaged.
INTRO. : Indicates that the Intro. Scan function is engaged.
SPACE : Indicates that the Auto Space function is engaged.

PLAY 9

Press this button to play a disc already in the DISC TRAY 7. An LED in the center of the button will glow whenever the PLAY function is engaged.

PAUSE 10

Press this button to temporarily stop playback of a disc. An LED in the center of the button will glow whenever the pause function is engaged. To resume play of the disc at the precise point at which the PAUSE mode was engaged, press the PLAY button 9 or 10.

STOP/CLEAR ●

Press this button to stop play and clear all programming of the disc.

TRACK ●

These buttons are used to skip forward or back to a desired track on a disc being played.

To play a particular track:

- 1) Press the appropriate track button (forward or back) successively until the desired track appears on the Display Panel.
- 2) Press the PLAY button ● or ●.

It is not necessary to press the PLAY button ● or ● if playback of the disc is in progress.

▶▶ : Each time this button is pressed, the player will advance to the next track.

◀◀ : If this button is pressed, while playback is in progress, the player will return to the beginning of the track being played. Subsequently, each time this button is pressed, the player will go to the beginning of the previous track.

FF/FR ●

Press these buttons to scan a disc at rapid speed forward or in reverse.

▶▶ (FF) : Press to music-search forward.

◀◀ (FR) : Press to music-search backward.

NOTE : ● These buttons operate only during play and pause modes.

- When these buttons are pressed during play, search will begin at a slow rate and then will accelerate after 3 seconds.
- Fast Forward and Fast Reverse scan is not audible when the PAUSE button ● is engaged. In such instances, refer to the Time Display to find the desired point on the disc using one of the four time modes.

OPEN/CLOSE ●

Press this button to open or close the DISC TRAY ●.

REPEAT ●

Press this button to turn the REPEAT function on and off and to cancel A-B Repeat. The REPEAT indicator will light in the Display Panel during both REPEAT and A-B Repeat modes (See A-B ●). When the REPEAT indicator alone shows, the entire disc will repeat from the beginning after playback of the last track on the disc. This REPEAT function will continue until cancelled through the REPEAT button.

A-B ●

Press this button to initiate repeated playback of any segment, of any length, in a disc. The A-B Repeat function can only be activated while a disc is actually playing and/or the Pause mode is engaged.

- 1) Press the A-B button whenever the disc reaches the desired point (A) where you wish to begin the A-B Repeat phase. Check the Display Panel to be sure that the REPEAT indicator lights and that the A-B indicator is blinking.
- 2) Let the disc play (or use the ▶▶ or ▶▶▶ buttons to advance playback quickly forward) to the point (B) at which you wish the A-B Repeat mode to end and return to point (A) for immediate repeat, then press the A-B button again. Check the Display Panel again to make sure that the A-B indicator has changed from blinking mode to permanent illumination indicating that the player has accepted the desired instructions on A-B repeat.

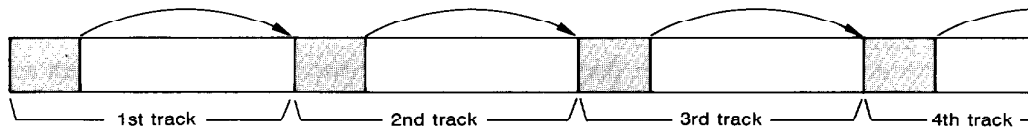
The GCD-575 will automatically return to point A each time it reaches point B and play the selected segment indefinitely until the A-B Repeat function is cancelled.

To cancel A-B Repeat Play, press the REPEAT button ● on the GCD-575 or the REPEAT CLEAR button ● on the Remote Transmitter.

NOTE : If you set point B (return point) at a location on the disc before point A (begin re-playback) by using the ◀◀ or ◀◀◀ buttons, A-B Repeat Play will begin at point B and end at point A.

INTRO 17

Press this button to audition the beginning of each track on the disc in succession.



- 1) If you are already playing a disc, press the STOP/CLEAR button 11 on the GCD-575 or the STOP button 26 on the Remote Transmitter to stop play.
- 2) Press the INTRO button. The INTRO indicator will light in the Display Panel.
- 3) Set the Intro length (in seconds) using the 10-KEY PAD 36 on the Remote Transmitter. Any Intro length from 1 to 60 seconds is possible.
- 4) Press the PLAY button 9 or 35. The Intro function will now begin.

To cancel INTRO scan, press the INTRO button again or press the STOP/CLEAR button 11 or the STOP button 26.

- NOTE :**
- When you press the INTRO button during playback of a disc, or do not set the Intro length as in step 3 above, the Intro length will be set automatically at 10 seconds.
 - When you are programming specific tracks, the Intro scan will be carried out only for the tracks that are programmed. (See MEMORY 20).
 - When tracks on the disc have a few seconds of silence at the beginning, or fade in, and you set the Intro length to one or two seconds, the player may skip to the next track before the program material can be heard.

AUTO SPACE 18

Press this button to automatically insert a 4 second pause between tracks. To turn the auto space function on, press the AUTO SPACE button. The SPACE indicator will light in the Display Panel. To cancel the Auto Space function, press the AUTO SPACE button once again.

NOTE : The 4-second pause between tracks will not be included in the time indication in the Display Panel.

TIME 19

Press this button to select the desired Time Display Mode. Each time the button is pressed, the Time Display mode will change as follows:

ELAPSED ——— T.ELAPSED ——— REMAIN ——— T.REMAIN

When programming tracks into the GCD-575's memory, this function can be used to check the total playing time of the program by pressing the TIME button instead of the MEMORY button 20 or 37. (See MEMORY 20.)

MEMORY ●

Press this button to enter any preselected track into the program. The Programmed Play function allows you to program any number of tracks (up to 24) in any desired sequence.

To set up a program

- 1) Select the track you wish to program using the 10-KEY PAD ● on the Remote Control or the TRACK buttons ● or ●.
- 2) Press the MEMORY button. The **MEMO** indicator in the Display Panel will blink for a few seconds, then illuminate permanently. At this point the track is programmed. The playing time of the programmed track will be added to the Time Display.
- 3) Repeat steps 1 and 2 above for any additional tracks you wish to program.
- 4) Press the PLAY button ● or ● to begin Programmed Play.

ALTERNATE FUNCTION

If during programming, after selecting a desired track, you'd like to know the duration of the program as it stands without adding the present track to the program, press the TIME button ● instead of the MEMORY button. The playing time of the present track will be added to the displayed time but will not be programmed. When the TIME button ● is released, the Time Display will return to the previous total programmed time. Now, should you wish to add the displayed track to the memory, press the MEMORY button.

- NOTE :**
- A maximum of 24 tracks are able to be programmed.
 - Pauses, not only tracks, can be programmed. To program a pause, enter "0" in the memory. "P" will be shown as the track number in the TRACK display. A pause counts as one track, and cannot be entered as the first track, or following another pause. Whenever a pause is programmed as a track, the player will automatically go into PAUSE. To resume programmed playback, you must press PLAY ● or ●.
 - When the MEMORY button is pressed, the **MEMO** indicator will blink, then light up permanently. The track will be entered in the memory instantaneously when the MEMORY button is pressed, therefore one can continue the programming function to the next track even though the **MEMO** indicator continues to blink.
 - If one initiates programming while a disc is playing, the LED in the center of the PLAY button ● will blink. If, after the program in process of being played ends, the PLAY button is pressed, the LED will glow continuously and the Programmed Play will begin. The preceding sequence also applies if programming is effected during the pause mode.
 - Programming can also be undertaken while the DISC TRAY ● is open to allow you to refer to the disc label while programming desired tracks. In such cases, no time display will be available on the Display Panel.
 - Track selection cannot be undertaken with the 10-KEY PAD ● on the Remote Transmitter while programmed tracks are in the process of being played.
 - Should you try to program a track number higher than 24, " - - - - " will be displayed in the Display Panel. Also, in some instances, during Programmed Play and depending on the Time Display Mode, " - - - - " may be displayed.

When Playing Programmed Tracks

T.ELAPSED : Indicates that the total elapsed time of the programmed tracks is shown in the Time Display.

T.REMAIN : Indicates that the total remaining time of the programmed tracks is shown in the Time Display.

Depending on the program contents, the total elapsed or remaining time may exceed 99 minutes 59 seconds. In this case " - - - - " will be displayed.

CANCELLING PROGRAMS

- 1) Press the STOP/CLEAR button ● on the GCD-575. During Play or Pause modes the button must be pressed twice.
- 2) Press the MEMORY CLEAR button ● on the Remote Transmitter. If a disc has been loaded in the GCD-575 (the DISC indicator will light), programs can also be cancelled by pressing the OPEN/CLOSE button ● or ●.

AFPC ①

The Analog Frequency/Phase Contour is an ADCOM proprietary circuit that imparts the characteristics of analog discs and phono cartridges to the signal from compact discs. It is particularly useful when playing CDs which were poorly mixed, excessively multi-microphoned with consequent abnormal separation or other similar techniques, all of which can result in high-frequency "glare" and lack of homogeneity. You may also find it useful when listening through headphones to provide a more normal aural perspective and balance. The AFPC is operative on both the FIXED ① and VARIABLE ② outputs, but is NOT operative on the DIGITAL OUT ③.

Press the AFPC button to activate the circuit. When the AFPC is activated, the LED in the center of the button will glow. Press the button once again to defeat the AFPC.

POLARITY ②

Press this button to reverse the normal, positive-going polarity of the GCD-575 to negative-going or inverted. The LED in the center of the button will glow whenever the normal, positive-going polarity is selected. Whenever power to the GCD-575 is turned on, normal polarity will be set automatically even if the reverse polarity had been selected when the unit was turned off.

SENSOR ③

The Sensor Window receives the commands from the hand-held Remote Transmitter, sent in the form of invisible infrared light. Be certain, always, that the Sensor Window is unobstructed. (See TRANSMITTER WINDOW ③.)

PHONES ④

The output for headphones is a standard 1/4", three-conductor type designed for use with conventional stereo headphones. This jack has its own amplifier to power the headphone set. The level at the headphone jack is adjustable via the VOLUME control ⑤. It is recommended that, if you are listening to headphones, you turn off your preamplifier or receiver so that the loudspeakers are not being played simultaneously.

NOTE : It is NOT recommended that you try to use headphones simultaneously with the VARIABLE output ②. The PHONES jack and VARIABLE output ② share part of the internal circuitry of the GCD-575 and BOTH should not be used at the same time.

VOLUME ⑤

Use this control to adjust the output level from both the VARIABLE output ② and PHONES jack ④. This control has no effect on the FIXED output ① or DIGITAL OUT ③.

REMOTE CONTROL TRANSMITTER

Please refer to the diagram below of the hand-held Remote Control Transmitter. Be certain that fresh batteries have been installed in the Remote Transmitter before attempting to operate the unit.

STOP ●

Press this button to stop playback of a disc.

OPEN/CLOSE ●

Press this button to open or close the DISC TRAY ●.

TRACK ●

Press the appropriate button to skip forward or back to a desired track on a disc being played. (See TRACK ●.)

FF/FR ●

Press the appropriate button to scan a disc or track at a rapid speed, forward or reverse. (See FF/FR ●.)

10-KEY PAD ●

The buttons on this pad can be used to:

- 1) Set the intro length for Intro Scan Play. (See INTRO ●.)
- 2) Select tracks you wish to program for Programmed Play. (See MEMORY ●.)
- 3) Select a particular track or tracks you wish to play. For this last function, punch in the track number you wish to play (for example, if you want track 12, press 1 and then 2), and then press the PLAY button ● or ●.

MEMORY ●

Press this button to program a track in the Memory. The Programmed Play function allows you to program any track or tracks in any order. (See MEMORY ●.)

MEMORY CLEAR ●

Press this button to clear any program previously set. (See MEMORY ●.)

TRANSMITTER WINDOW ●

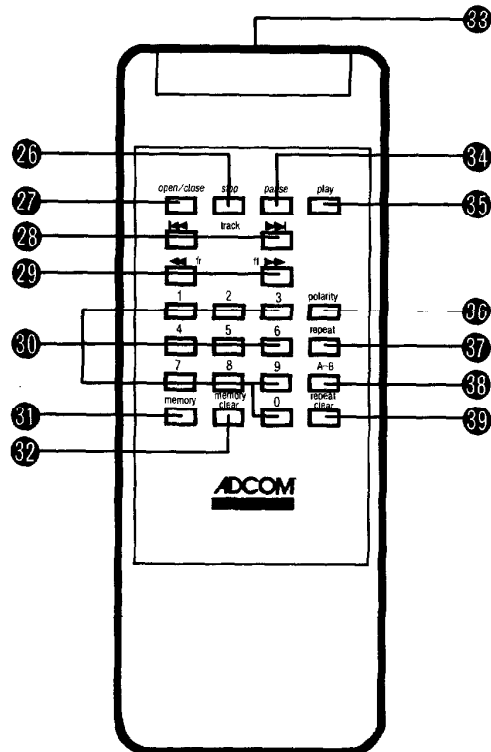
Point this Window toward the SENSOR ● of the GCD-575. Infrared signals are emitted from this window and are received by the infrared sensor within the GCD-575. Be sure both the TRANSMITTER WINDOW and the SENSOR ● are unobstructed when you use the Remote Transmitter.

PAUSE ●

Press this button to temporarily stop playback of a disc. To resume play of the disc, at the precise point at which the PAUSE mode was engaged, press the PLAY button ● or ●.

PLAY ●

Press this button to play a disc already in the DISC TRAY ●.



POLARITY 36

Press this button to reverse the normal, positive-going polarity of the GCD-575 to negative-going or inverted. The LED in the center of the POLARITY button 22 on the GCD-575 will glow whenever the normal positive-going polarity is selected. Whenever power to the GCD-575 is turned on, normal polarity will be set automatically even if the reverse polarity had been selected when power to the unit was turned off.

REPEAT 37

Press this button to turn the REPEAT function on. The REPEAT indicator will light in the Display Panel of the GCD-575 when the REPEAT mode is activated.

A – B 38

Press this button to initiate repeated playback of any segment of any length in a disc. (See A – B 16.)

REPEAT CLEAR 39

Press this button to cancel REPEAT play 37 or A – B Repeat Play 38.

NOTE : THE REMOTE TRANSMITTER WILL NOT FUNCTION OR FUNCTION RELIABLY UNLESS TWO (2) FRESH "AA" BATTERIES ARE INSTALLED PROPERLY INTO THE BATTERY COMPARTMENT IN THE REAR PANEL OF THE REMOTE TRANSMITTER. ONLY ALKALINE BATTERIES ARE RECOMMENDED; NEVER USE ZINC-CARBON BATTERIES.

PLAYING A DISC

- 1) Press the POWER switch 6.
- 2) Press the OPEN/CLOSE button 14 or 27. The DISC TRAY 7 will open.
- 3) Place the disc in the DISC TRAY 7 with the label facing up.
- 4) Press the PLAY button 9 or 35. The DISC TRAY 7 will slide back into the GCD-575 automatically and play will begin from the first track.
- 5) When all the tracks on the disc have been played, the GCD-575 will return automatically to the first track and stop.

NOTE : If you press the OPEN/CLOSE button 14 or 27 instead of the PLAY button 9 or 35, the DISC TRAY 7 will slide back into the GCD-575 and, after a few seconds to read information on the disc, the total number of tracks and the total playing time will be displayed. One can then press the PLAY button 9 or 35 to begin playback of the disc from the first track.

TIMER PLAYING

A separate timer unit can be used to initiate playback of a disc whenever power to the GCD-575 is turned on; so long as a disc has already been loaded into the DISC TRAY ⑦ of the GCD-575. Therefore, playback of any preselected and loaded disc can be initiated at any time desired in the following manner.

- 1) Connect the GCD-575's AC POWER/LINE CORD ④ to any of the amplifier's or receiver's auxiliary power outlets (switched or unswitched).
- 2) Connect the amplifier's or receiver's power cord and plug to the timer's power outlet.
- 3) Connect the timer's power cord to an unswitched wall outlet.
- 4) Load a disc in the GCD-575.
- 5) Initiate playback of the disc to set the desired playback volume level through the volume control of the preamplifier or receiver.
- 6) Be certain that both the POWER switch ⑥ of the GCD-575 and preamp or receiver are on.
- 7) Set the timer to the desired time you'd like the system to begin playback.
- 8) Playback will begin automatically at the set time.

NOTE : Timer playback will always begin at the first track. Program Play and Repeat Play functions cannot be programmed for Timer Playback.

CARING FOR YOUR GCD-575

Great care has been taken by ADCOM to assure that your Compact Disc Player is as flawless in appearance as it is electronically. The front panel is heavy-gauge, high-grade, anodized aluminum extrusion, bead-blasted for durability. If the front panel, top and sides should become dusty or fingerprinted, they can be cleaned with a soft cloth, slightly dampened with a very mild detergent solution.

NOTE : DO NOT SPRAY OR USE LIQUIDS OF ANY KIND ON THE SURFACES OF THE GCD-575.

PRECAUTIONS

- Try not to store or use the GCD-575 in high-heat or high-humidity areas. Such conditions can interfere with the proper operation of the system.
- Connect the AC power cord only to the correct source of power. The voltage and frequency for which the unit was manufactured is printed on the identification plate on the rear panel of the unit.
- Do not handle a compact disc, operate the GCD-575, or unplug it from its source of power when your hands are wet.
- Do not attempt to open the unit or remove its cover. There is the potential of shock and radiation hazard within the unit.
- Do not place objects in or on the Compact Disc drawer, or permit objects to fall inside the unit.
- Make sure the GCD-575 is turned off, and remove the power cord from its power source or socket if you plan to leave the system unattended for a long period of time.
- Do not use or store the GCD-575 on or near vibrating sources or sources of heat, in extremely cold places, in high humidity areas, in dusty or smoky environments or very poorly ventilated areas.
- Try to avoid conditions which will cause condensation on the optical system of the player; such as environments with very high relative humidity and areas where the temperature will cycle between very cold and very warm levels. Condensation on the optical elements will impair or prevent playback of a disc. If condensation occurs, turn the player on and wait 30 minutes before attempting playback of a disc.

IN CASE OF DIFFICULTY

Player fails to play a loaded disc:

1. Check that disc is loaded properly, label side up.
2. Make sure 3-inch disc is in its depressed, center tray.
3. Make sure disc surface is clean.
4. Check the disc for scratches, warpage or other damage. Try another disc.
5. Be certain there is no condensation on the optical elements of the player as would be the case if brought into a warm, humid house from a cold outside environment. In such a case, turn on player and wait 30 minutes before attempting further operation.
6. Turn off power for a second, turn unit on again, and press PLAY.

Programming cannot be initiated:

1. Be certain there is a disc in the drawer.
2. Check that disc is loaded properly, label side up.
3. Be sure the remote control transmitter's signal is not blocked and can reach the Sensor window on the main unit.
4. Check that remote control transmitter batteries are not weak. Keeping buttons pressed down continuously will run down batteries quickly.

Sound level drops suddenly or clicking noise is heard:

1. Make sure disc surface is clean.
2. Be certain disc is not damaged or warped.
3. Try another disc.
4. Double check surface on which player is sitting to be sure strong footfalls or other vibrations are not reaching player and player sits firmly on surface.
5. Try placing the player on another surface.

Player does not play through system:

1. Make sure correct output of player, Fixed or Variable, is connected to proper audio input of the sound system.
2. If the Variable outputs are being used, make sure the Volume control on the CD player is not at the maximum counterclockwise position (off).
3. Advance the Volume control on the player to a higher setting.
4. Make sure the selector switch on the amplifier or preamplifier is set to the input into which player is plugged.
5. If you're using the Variable output, disconnect any set of headphones from the Headphone jack on the player. It is not recommended that both headphones and the Variable outputs be used simultaneously.

Remote control commands are erratic or do not activate desired function:

1. Check that batteries in remote control transmitter are not weak. Replace batteries. Keeping the transmitter's buttons pressed down continuously, as when a heavy book is placed on top of the transmitter, will run down the batteries quickly.
2. Be sure to use only alkaline batteries. Zinc-Carbon batteries are not recommended for use in the transmitter.
3. Be certain batteries were inserted properly into the transmitter. When inserting batteries, follow the "+" and "-" markings inside the case and the batteries to insure proper operation (+ to + and - to -).
4. Check to see that Sensor window in the CD player and the window on the front of the remote control transmitter are clean. If dirty, clean them with a facial tissue moistened with Windex or other glass cleaner.
5. Check the window on the front of the remote transmitter for cracks or other damage. If the transmitter is dropped on a hard surface, the internal circuitry can be damaged.
6. Check that the signal of the remote transmitter is aimed at the Sensor window of the player and that there is no obstruction which might prevent the transmitter's signal from reaching the Sensor window.
7. Do not permit sunlight or a strong incandescent "spot" to shine directly on Sensor window of the infrared receiver. These are strong sources of infrared energy and can "block" the commands from the remote transmitter.

SERVICING

ADCOM has a Technical Service Department to answer questions pertinent to the installation and operation of your unit. In the event of difficulty, please contact us for prompt advice. If your problem cannot be resolved through our combined efforts, we may refer you to an authorized repair agency, or authorize return of the unit to the factory. To aid us in directing you to a convenient service station, it would be helpful if you indicate which major city is accessible to your home.

Please address mail inquiries to:

ADCOM Service Corp.
11 Elkins Road
East Brunswick, NJ 08816

For telephone inquiries:

Phone: (201) 390-1130 - ask for Technical Service

When calling or writing about your GCD-575, be sure to note and include the serial number of your unit, as well as the date of purchase and the dealer from whom the unit was purchased. In the event that the unit must be returned to the factory for service, you will be instructed as to the proper procedure when you call or write for Return Authorization.

UNDER NO CIRCUMSTANCES SHOULD YOUR UNIT BE SHIPPED TO THE FACTORY WITHOUT PRIOR AUTHORIZATION, OR PACKED IN OTHER THAN ITS ORIGINAL CARTON AND FILLERS.

If the original shipping carton and its fillers have been lost, discarded, or damaged, a duplicate carton may be obtained from our Service Department for a nominal charge.

Always ship PREPAID via UPS or other approved carrier. DO NOT SHIP VIA PARCEL POST, since the packing was not designed to withstand rough Parcel Post handling. We are forced to refuse many Parcel Post shipments which arrive in very poor condition. FREIGHT COLLECT SHIPMENTS CANNOT BE ACCEPTED.

ADCOM GCD-575

TECHNICAL SPECIFICATIONS

| | |
|------------------------------------|---|
| FREQUENCY RESPONSE : | 5Hz ~ 20kHz, +0.1, -0.5dB |
| SIGNAL-TO-NOISE RATIO : | 105dB |
| DYNAMIC RANGE : | 98dB |
| THD : | 0.0025% |
| IMD (70Hz difference) : | |
| @ 5kHz | 0.00018% |
| @ 10kHz | 0.0003% |
| @ 15kHz | 0.0015% |
| IMD (SMPTE) : | 0.0015% |
| CHANNEL SEPARATION (1kHz) : | 95dB |
| INTERCHANNEL PHASE SHIFT : @ 20kHz | Less than 1.8° |
| OUTPUT IMPEDANCE : | |
| Fixed | 100Ω |
| Variable | 100Ω |
| Digital | 75Ω |
| OUTPUT LEVEL : | |
| Fixed | 2.5V RMS |
| Variable | Greater than 4.5V RMS |
| Digital | 0.5V peak-to-peak |
| FORMAT : | Optical |
| LASER : | GaAIAs semiconductor |
| SAMPLING RATE : | 176.4kHz |
| QUANTIZED BITS : | 16-bit linear |
| POWER : | 120VAC/60Hz |
| POWER CONSUMPTION : | 24 Watts |
| CHASSIS DIMENSIONS : | 17"(430mm) x 10-3/16"(260mm) x 3"(76mm) |
| MAXIMUM DIMENSIONS : | 17"(430mm) x 11-1/4"(285mm) x 3-7/16"(87mm) |
| WEIGHT : | 12lbs. (5.5kg.) |
| ACCESSORIES : | Remote Transmitter AR-575 Two AA, 1-1/2V batteries Low-loss audio cable |

