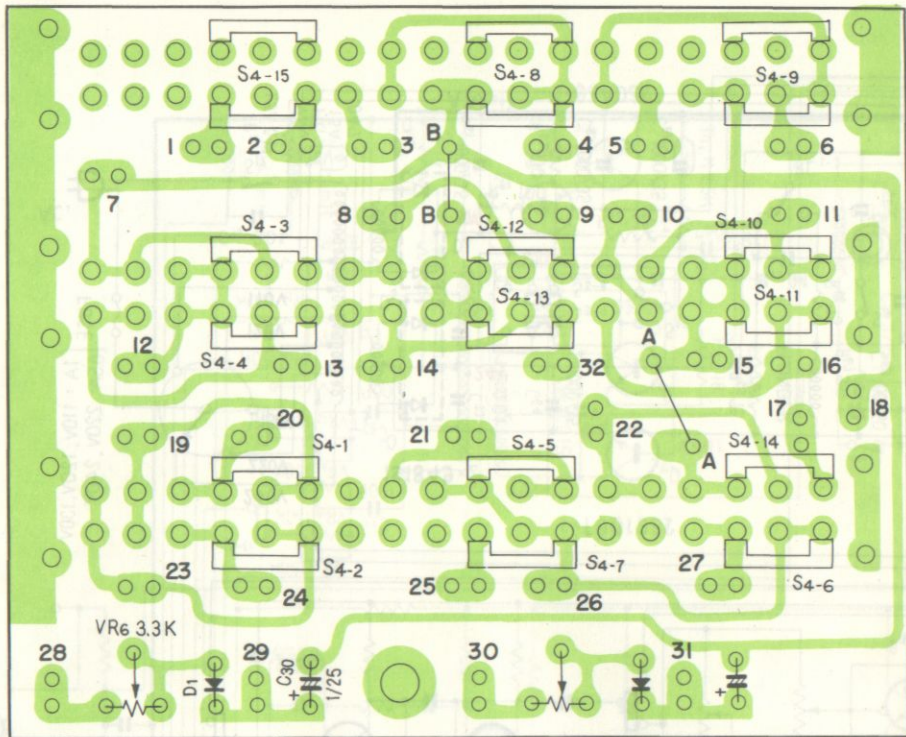




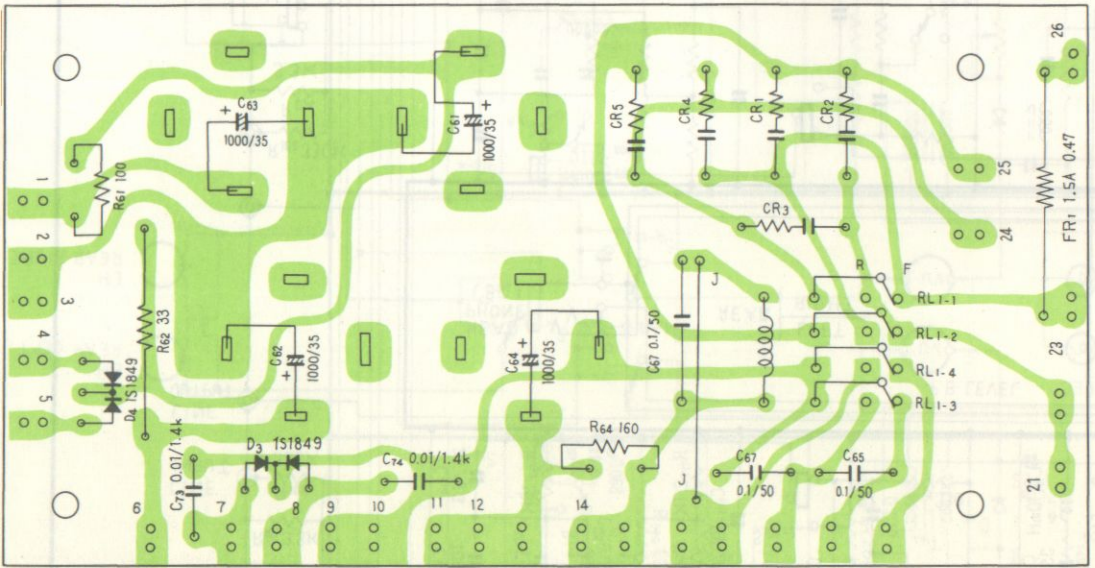
4-CHANNEL STEREO TAPE DECK

QT-74
F

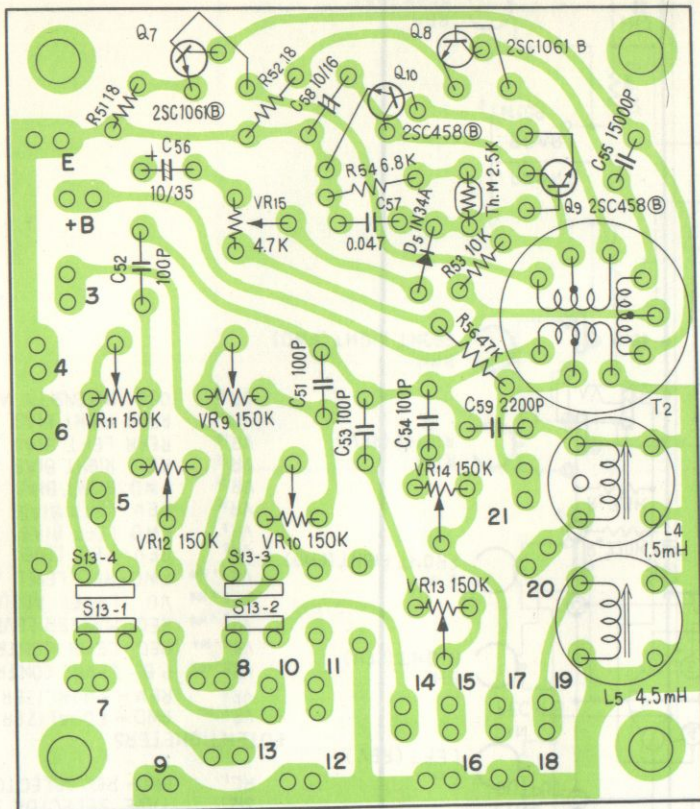
Mode switch ass'y RWX-001



Power supply ass'y RWR-020



OSC ass'y RWA-002

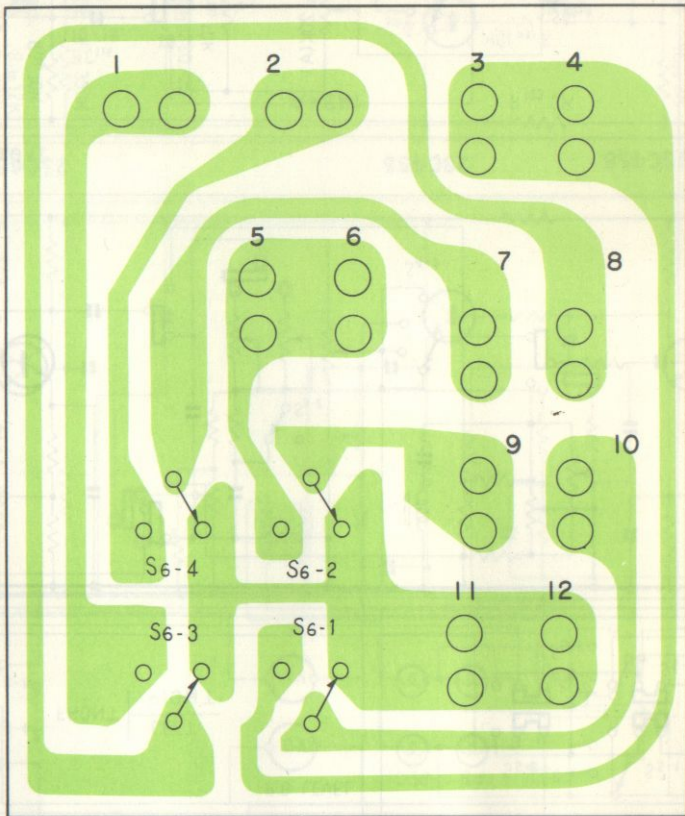


VR9 : FWD LEFT BIAS ADJ
 VR10: REV LEFT BIAS ADJ
 VR11 : FWD RIGHT BIAS ADJ
 VR12 : REV RIGHT BIAS ADJ

VR13 : REAR LEFT BIAS ADJ
 VR14 : REAR RIGHT BIAS ADJ
 VR15 : OSC INTENSITY
 S13 : FWD-REV SELECTOR SW (FWD POSITION)

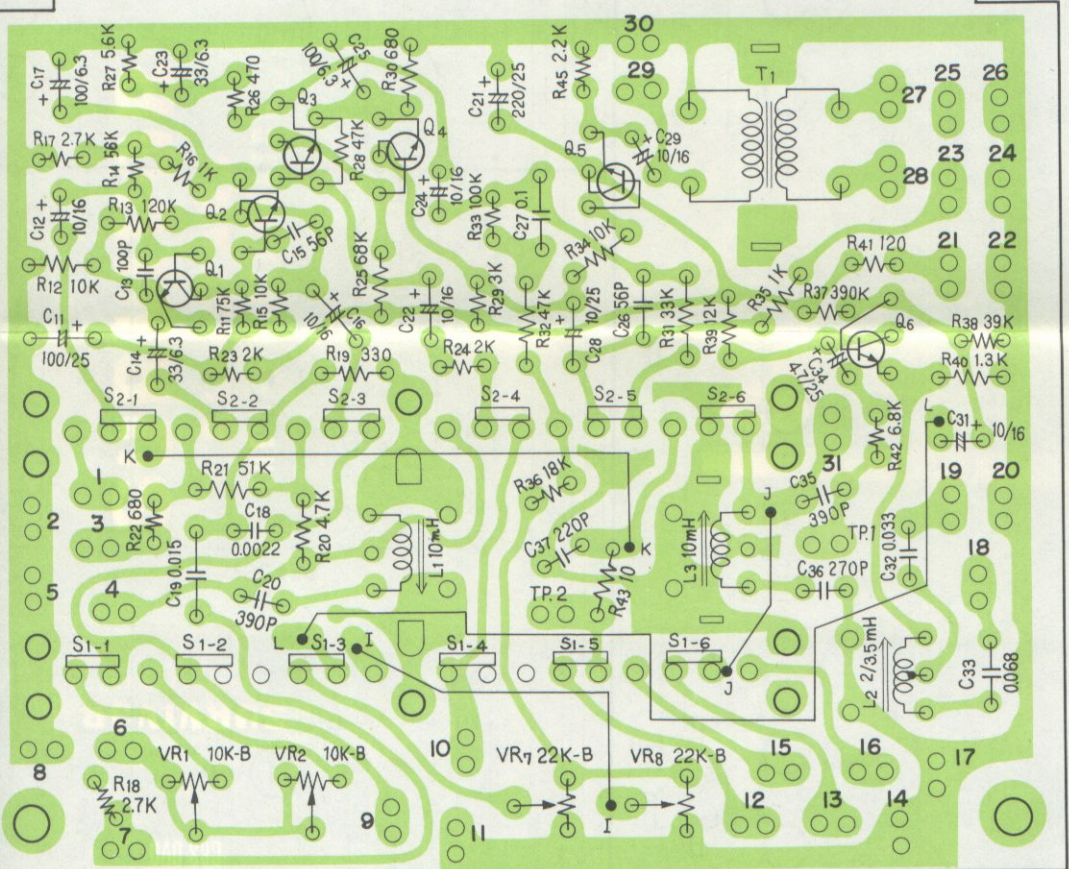
T2 : OSC TRANSFORMER
 L4 : FRONT DUMMY COIL
 L5 : REAR DUMMY COIL

Muting switch ass'y RWX-003



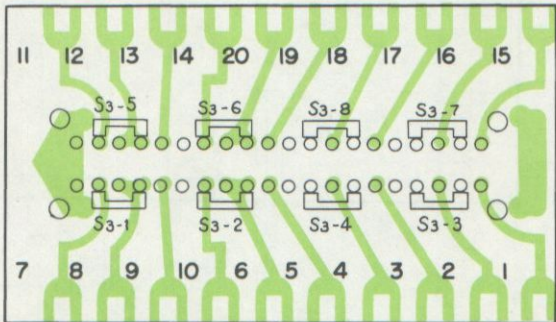
S₆ : MUTING SW (PLAY POSITION)

Amp ass'y A RWF-003



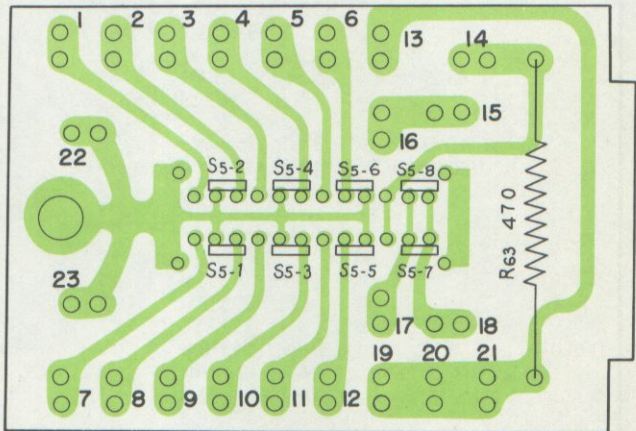
- Q1 ~ Q3 2SC458 LG (B) or (C)
- Q4 ~ Q6 2SC458 (C) or (D)
- S1 : FWD-REV SELECTOR SW (FWD POSITION)
- S2 : REC-P.B SELECTOR SW (P.B. POSITION)
- L1 : TRAP. COIL
- L2 : PEAKING COIL
- L3 : TRAP COIL
- T1 : MATCHING TRANSFORMER

EQ switch ass'y RWX-008

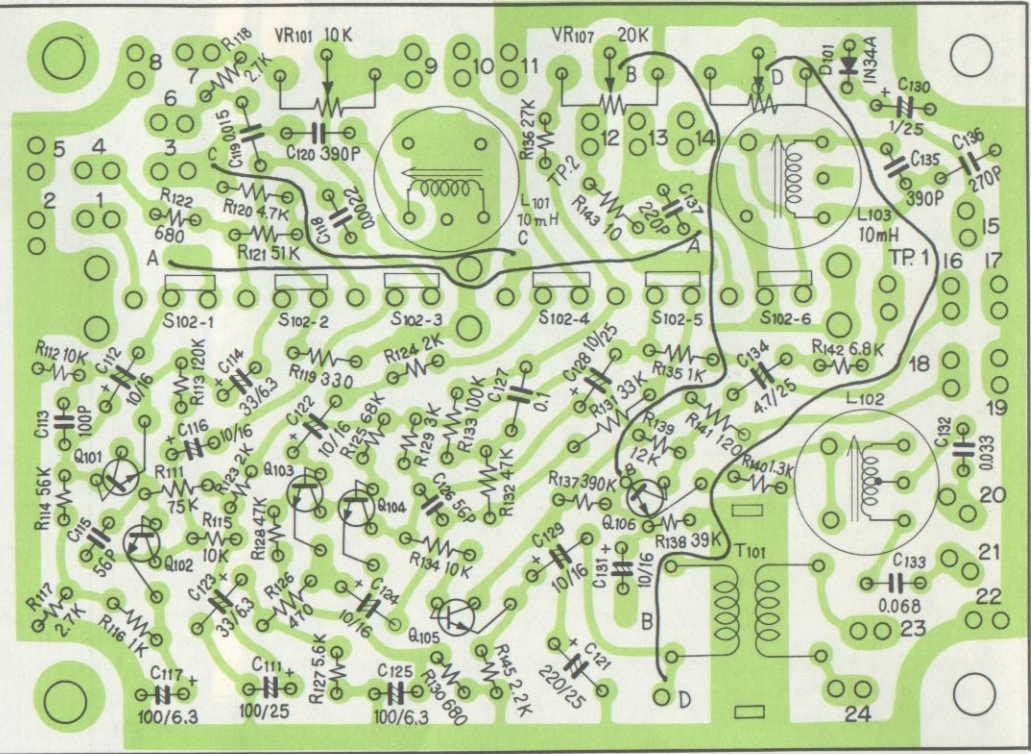
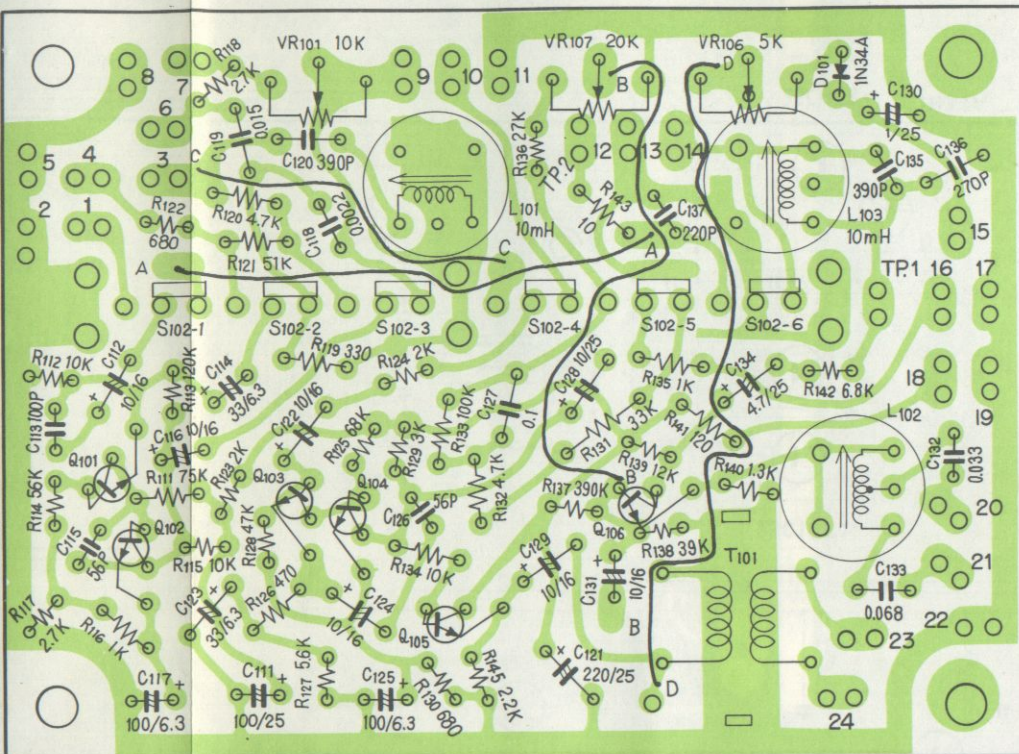


S₃ : EQUALIZER SELECTOR SW (7 ½ ips POSITION)

REC switch ass'y RWX-002



S₅ : REC - P.B. SELECTOR SW
(REC POSITION)



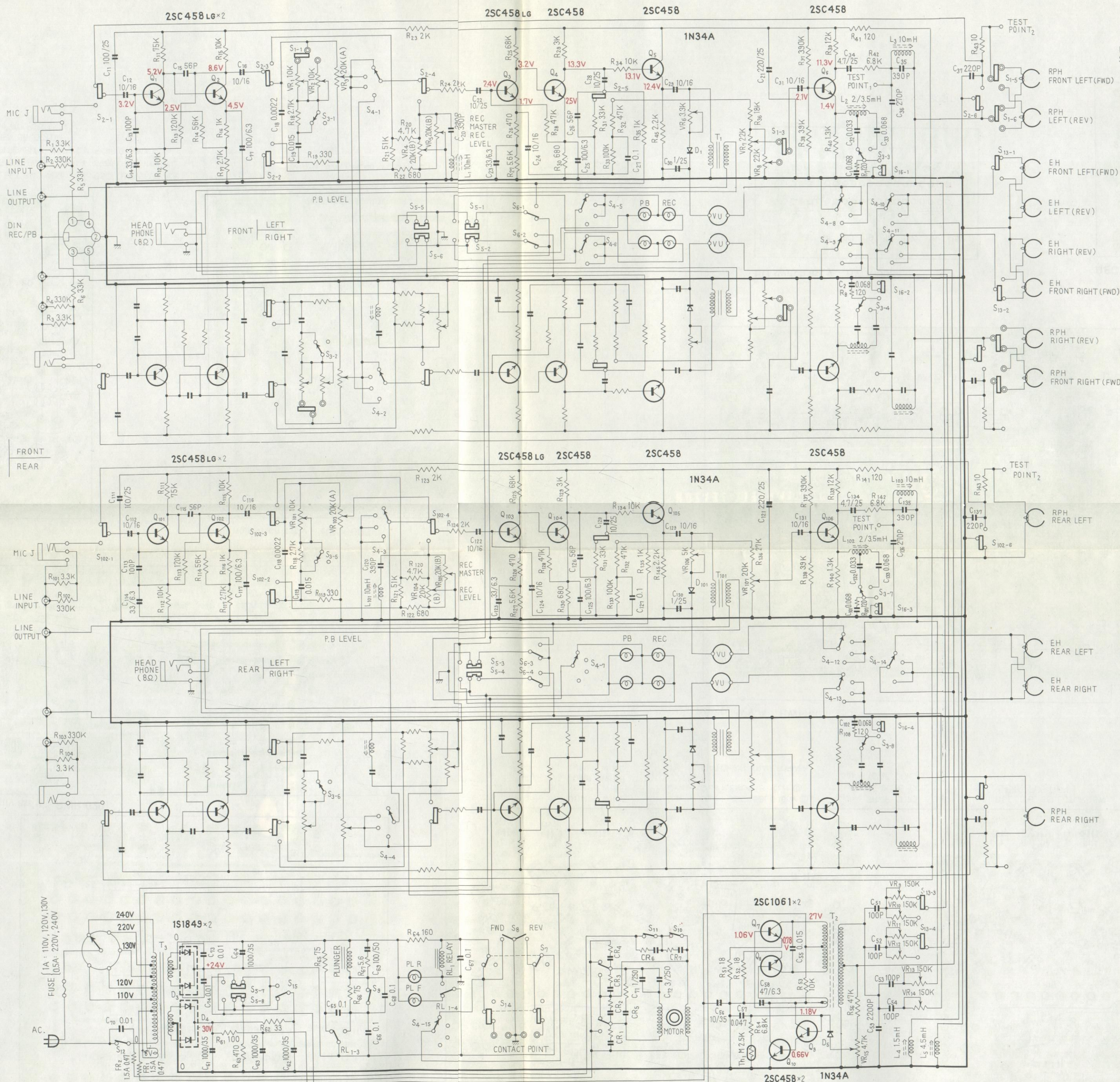
A - A : JUMP WIRE
 B - B : JUMP WIRE
 C - C : JUMP WIRE
 D - D : JUMP WIRE

Q101 ~ Q103 : 2SC458LG (B) or (C)
 Q104 ~ Q106 : 2SC458 (C) or (D)
 T101 : MATCHING TRANSFORMER

L101 : TRAP COIL
 L102 : PEAKING COIL
 L103 : TRAP COIL

S102 : REC-P.B. SELECTOR SW
 (P.B. POSITION)

VR101 : FWD EQUALIZER
 VR106 : VU LEVEL
 VR107 : FWD REC LEVEL



- NOTES:**
- SWITCHES**
- S_{1,13} FWD-REV SELECTOR SW (FWD POSITION)
 - S_{2,5,102} REC-P.B. SELECTOR SW (P.B. POSITION)
 - S₃ EQUALIZER SELECTOR SW (19cm/s POSITION)
 - S₄ MODE SW (4-CHANNEL POSITION)
 - S₆ MUTING SW (PLAY POSITION)
 - S₇ CONTACT POINT OFF SW (PLAY/STOP POSITION)
 - S₈ PRESET SW
 - S₉ PLUNGER SW
 - S₁₀ MOTOR SW
 - S₁₁ SHUT OFF SW
 - S₁₂ POWER SW
 - S₁₄ AUTO REVERSE SW
 - S₁₅ OSC SW
 - S₁₆ TAPE SELECTOR SW (LH POSITION)
 - RL₁ FWD-REV SELECTOR SW (FWD POSITION)
- POTENTIOMETERS**
- VR_{1,101} FWD-EQUALIZER ADJUSTER
 - VR₂ REV-EQUALIZER ADJUSTER
 - VR_{3,103} P.B. LEVEL CONTROL
 - VR_{4,104} REC LEVEL CONTROL
 - VR_{5,105} REC MASTER LEVEL CONTROL
 - VR_{6,106} VU LEVEL ADJUSTER
 - VR_{7,107} FWD-REC LEVEL ADJUSTER
 - VR₈ REV-REC LEVEL ADJUSTER
 - VR₉ FWD LEFT BIAS ADJUSTER
 - VR₁₀ REV LEFT BIAS ADJUSTER
 - VR₁₁ FWD RIGHT BIAS ADJUSTER
 - VR₁₂ REV RIGHT BIAS ADJUSTER
 - VR₁₃ REAR LEFT BIAS ADJUSTER
 - VR₁₄ REAR RIGHT BIAS ADJUSTER
 - VR₁₅ OSC INTENSITY ADJUSTER